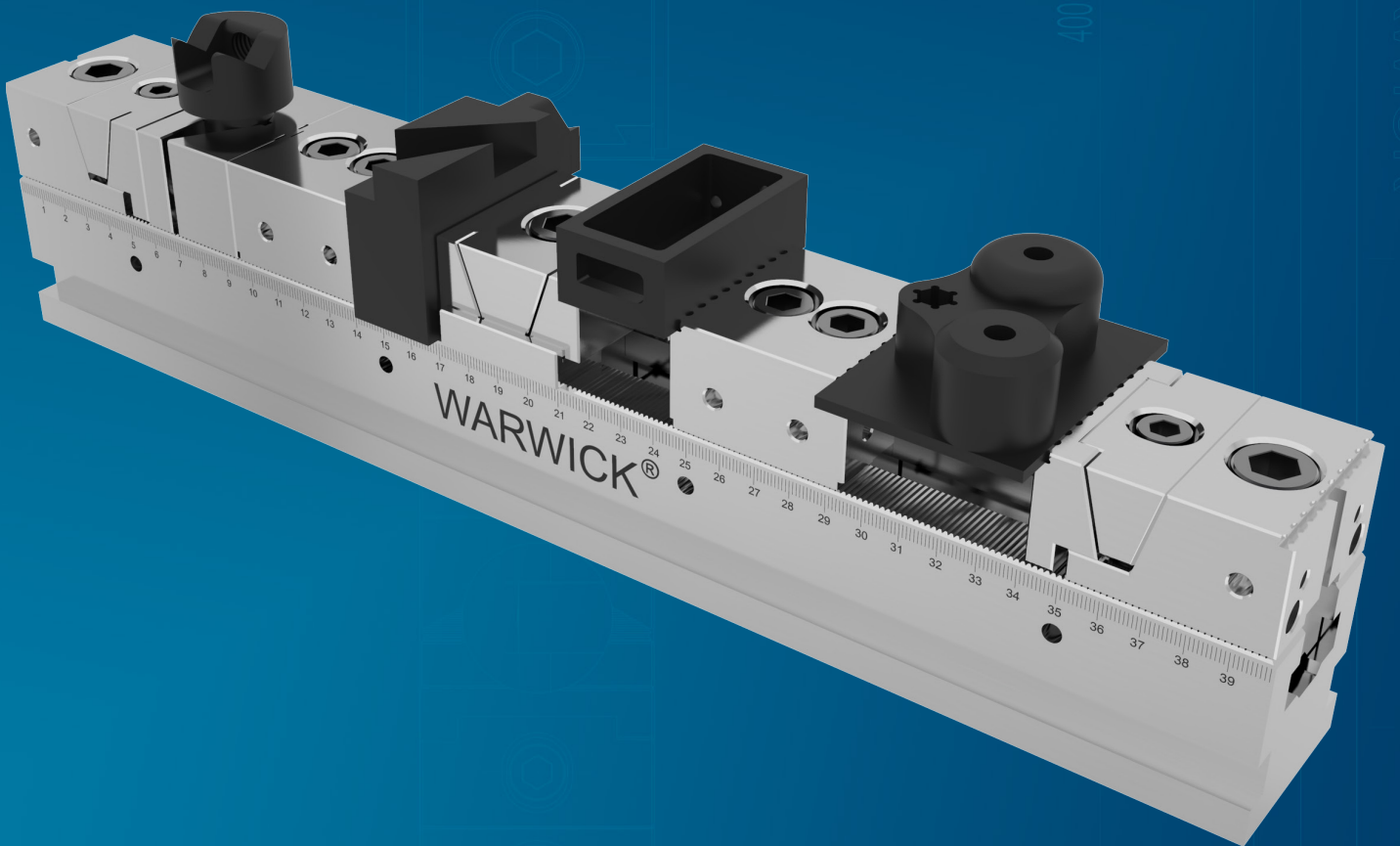

ordable-KSD

Multi-station vice

Grinding process, surface hardening treatment, extremely high position accuracy.

Applied to the SIMPLE-KSZ system, it will exhibit near-perfect exchange position accuracy

Flexible adjustment range and high repeat position accuracy greatly reduce downtime and tool changes.



WARWICK®

Advantages – Y

Hardened and ground serration
For maximum precision and form stability

Laser-etched ruler
Quick and precise preadjustment

Combination of several clamping rails
High degree of flexibility

Extremely high loading density
For economical machining

Vast chuck jaw program
Optimal adjustment to new clamping tasks

Only one actuation key is necessary for the multiple clamping vise
Optimal operator convenience

SIMPLE-KSZ interface
Versatile range of combinations due to the SIMPLE-KSZ modular system. Even shorter set-up times

Definition clamping force
The clamping force is the arithmetic sum of the various forces on the chuck jaws under the maximum pressure and maximum torque.

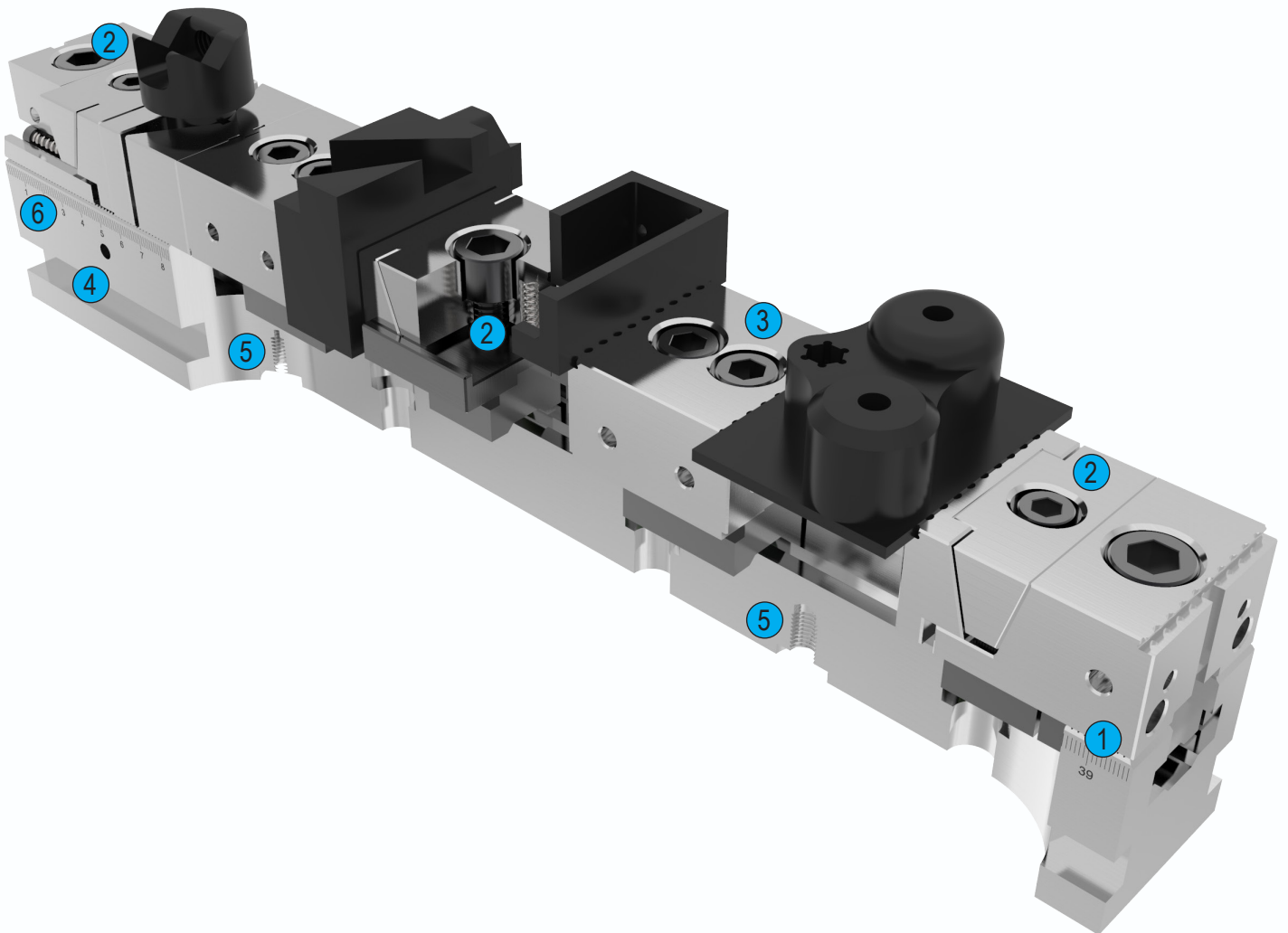
200

Affordable - KSD

Multi Clamping Vise

Technology

The movable jaw can be positioned on the guide rail by a serration system. The ruler with laser marking ensures that the jaws are quickly and evenly placed on the rail. The movable pressure block drives the jaws to achieve clamping. The side threads of the adjusting claw and the claw are used as a positioning for installing the workpiece.



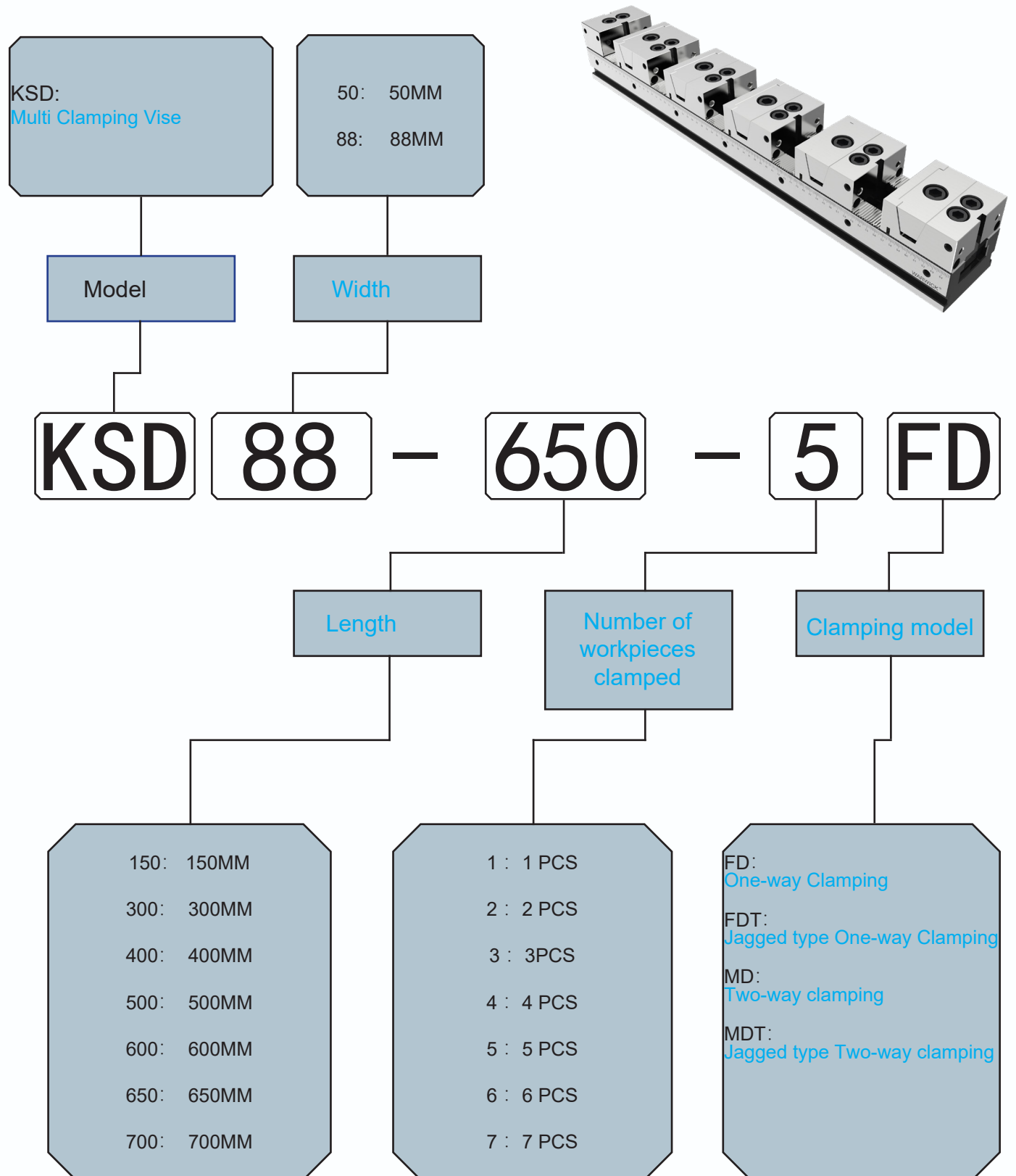
Technology

- 1 Hardened and ground serration
For maximum precision and form stability
- 2 Clamping assembly
Optimal adjustment for new clamping tasks
- 3 Fixed jaw can be turned 180°
High degree of flexibility
- 4 High-strength clamping rails
Ensure the best production results
- 5 SIMPLE-KSZ interface
Can be adapted to all SIMPLE-KSZ clamping stations
- 6 Laser-etched ruler
For quick chuck jaw positioning

Affordable - KSD

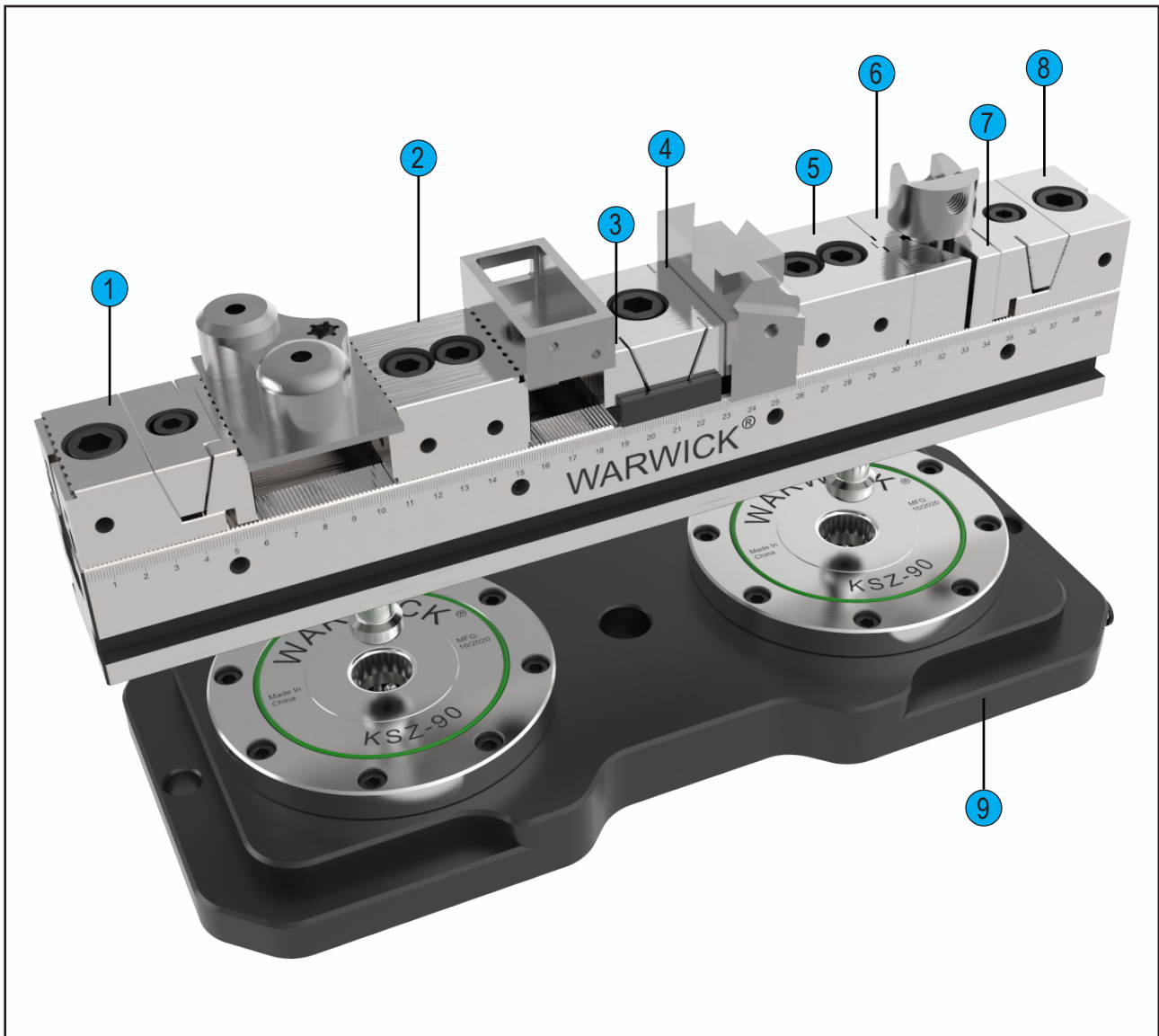
Multi Clamping Vise

Model introduction



Use Cases

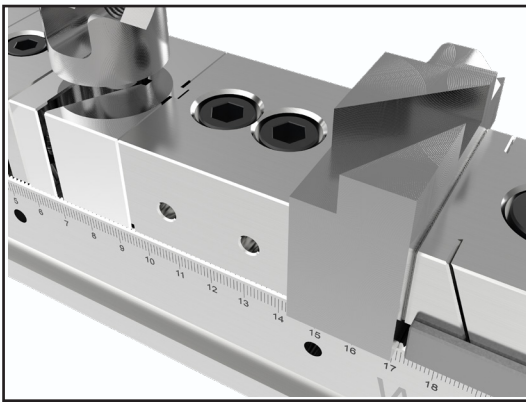
- ① **FD-T** Tooth type unidirectional clamping
- ② **GD-T** Tooth type fixed claw
- ③ **MD-T** Tooth type two-way clamping
- ④ **MD** Two-way clamping
- ⑤ **GD** Fixed claw
- ⑥ **RZ-V** V-shaped soft claw
- ⑦ **RZ-B** B-type soft jaw
- ⑧ **FD** One-way clamping
- ⑨ **KSZ** Zero Point Positioning System



Technology

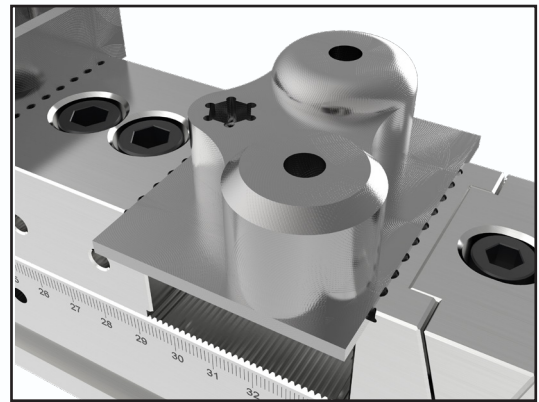
standard type

Plane clamping workpiece
Different types of soft jaws
can be installed



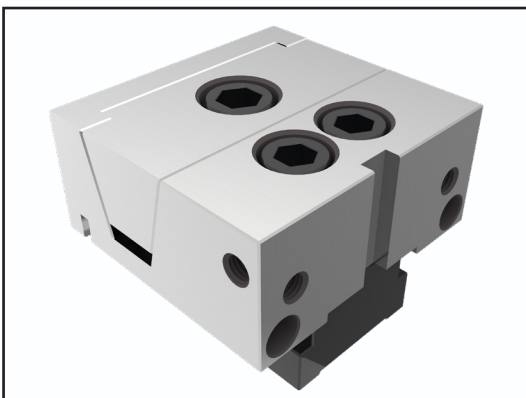
T powerful type:

Sawtooth to increase the
2.5 mm stepped band
sawtooth
Different types of soft jaws
can be installed



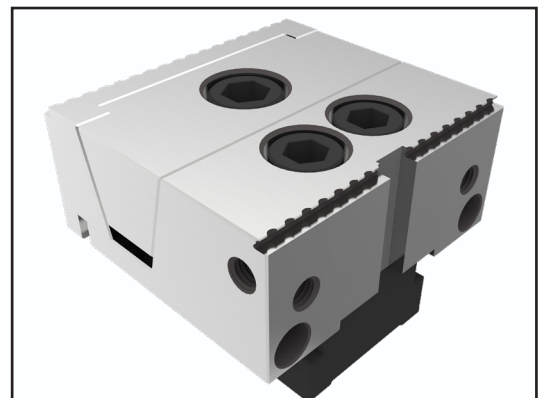
FD standard type

One-way clamping
Claw-shaped installation
positioning groove
Built-in return spring
Compact size allows more
workstations



FD-T powerful type:

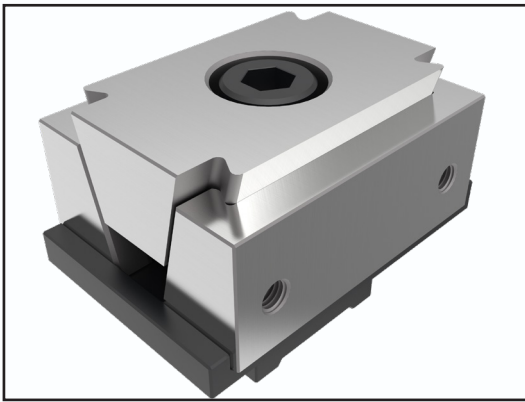
Serrated clamping surface
One-way clamping
Claw-shaped installation
positioning groove
Built-in return spring
Compact size allows more
workstations



Technology

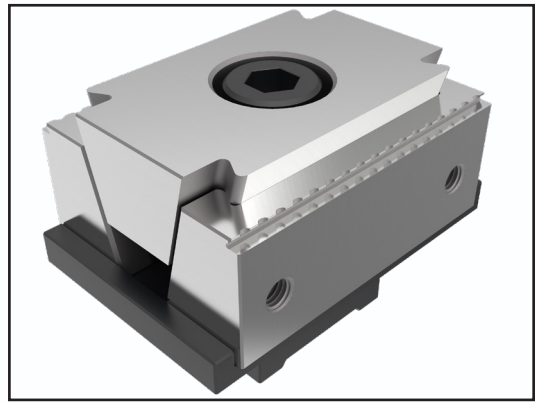
MD standard type

- Two-way clamping
- Claw-shaped installation positioning groove
- Built-in return spring
- Compact size allows more workstations



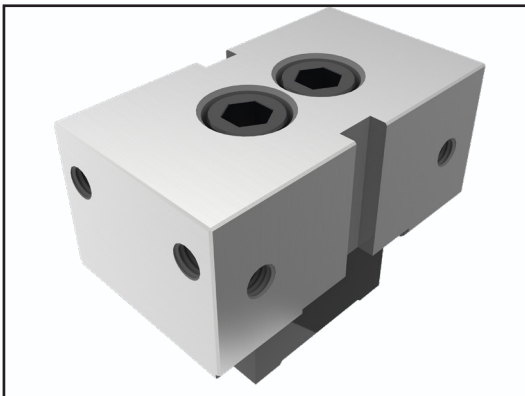
MD-T powerful type:

- Serrated clamping surface
- Two-way clamping
- Claw-shaped installation positioning groove
- Built-in return spring
- Compact size allows more workstations



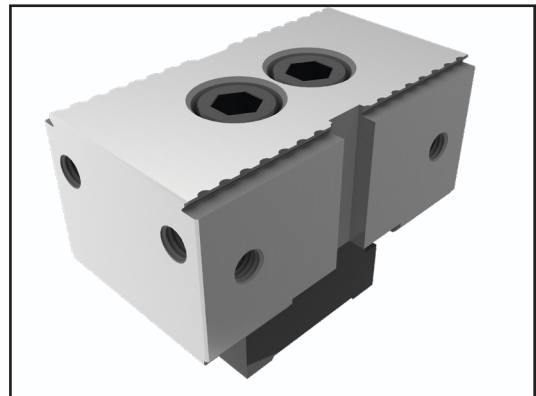
GD standard type :

- Common for FD and MD series grippers
- Claw installation positioning groove
- Compact size brings more workstations



GD-T powerful type:

- Common for FD and MD series grippers
- Serrated clamping surface
- Claw installation positioning groove
- Compact size brings more workstations



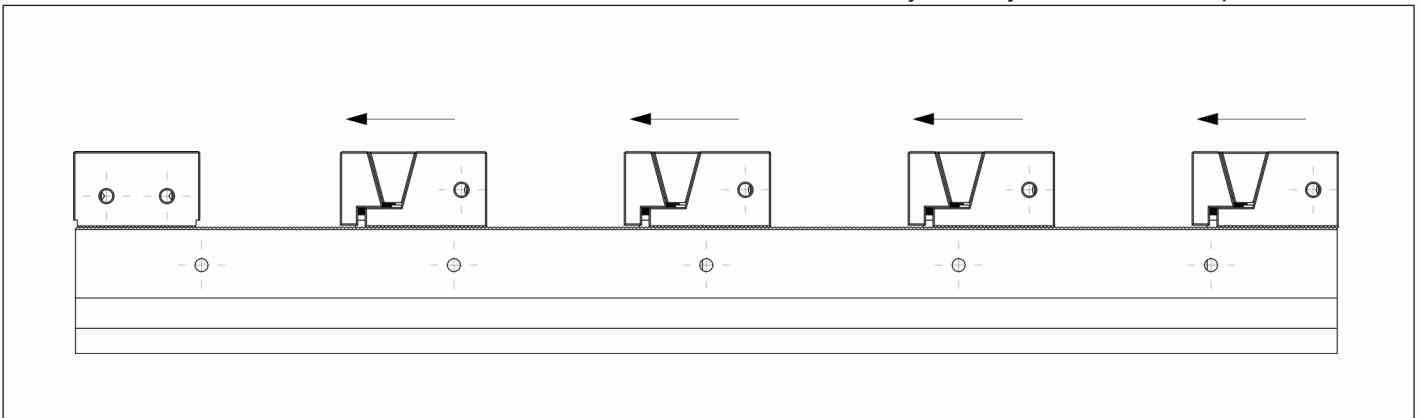
Clamping Capacity

The clamping range shows the max.

The maximum size of the workpiece that can be clamped depends on the length of the guide rail and the number of clamping areas.

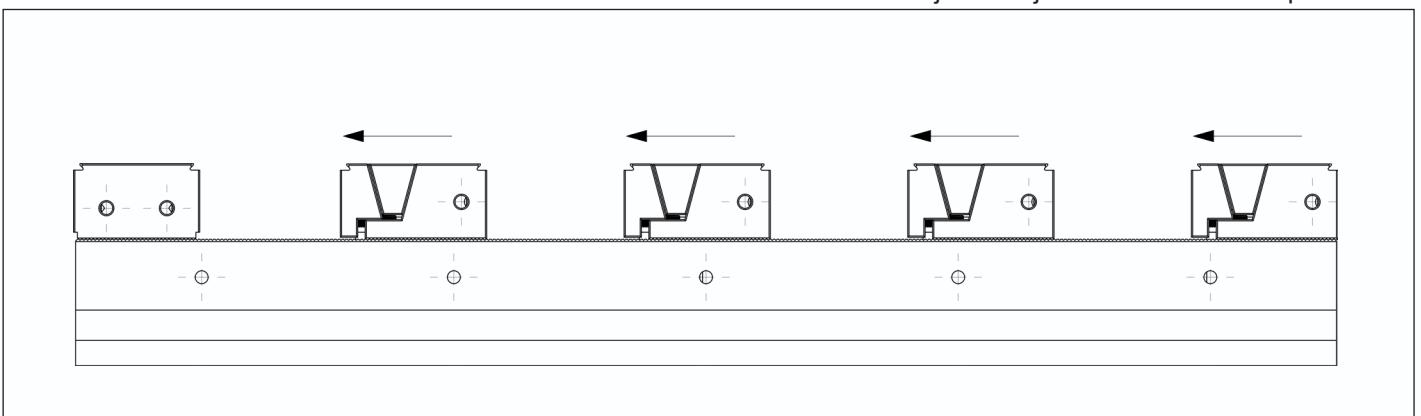
Description		Number of workpieces clamped								
		1	2	3	4	5	6	7	8	9
KSD50-300	Maximum workpiece clamping size	192	67	25	4					
KSD50-400		292	117	58	29	12				
KSD50-500		392	167	92	54	32	17	6		
KSD50-600		492	217	125	79	52	33	20	10	3
KSD50-650		542	242	142	92	62	42	27	17	8

FD TYPE Adjustable jaws with Parallel plane



Description		Number of workpieces clamped								
		1	2	3	4	5	6	7	8	9
KSD50-300	Maximum workpiece clamping size	197	72	30	9					
KSD50-400		297	122	63	34	17				
KSD50-500		397	172	97	59	37	22	11		
KSD50-600		497	222	130	84	57	38	25	15	8
KSD50-650		547	247	147	97	67	47	32	22	13

FD-T TYPE Adjustable jaws with Toothed steps



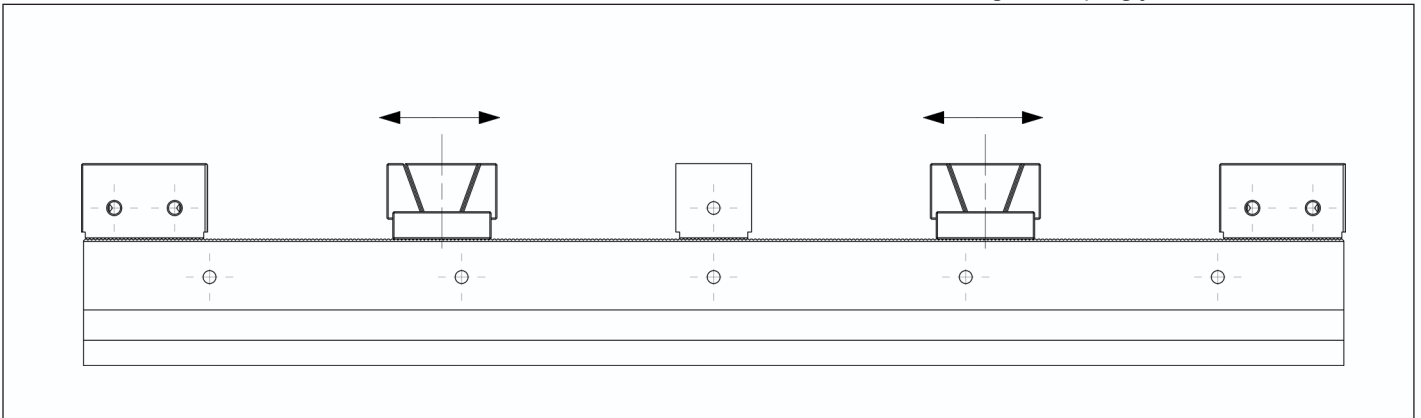
Clamping Capacity

The clamping range shows the max.

The maximum size of the workpiece that can be clamped depends on the length of the guide rail and the number of clamping areas.

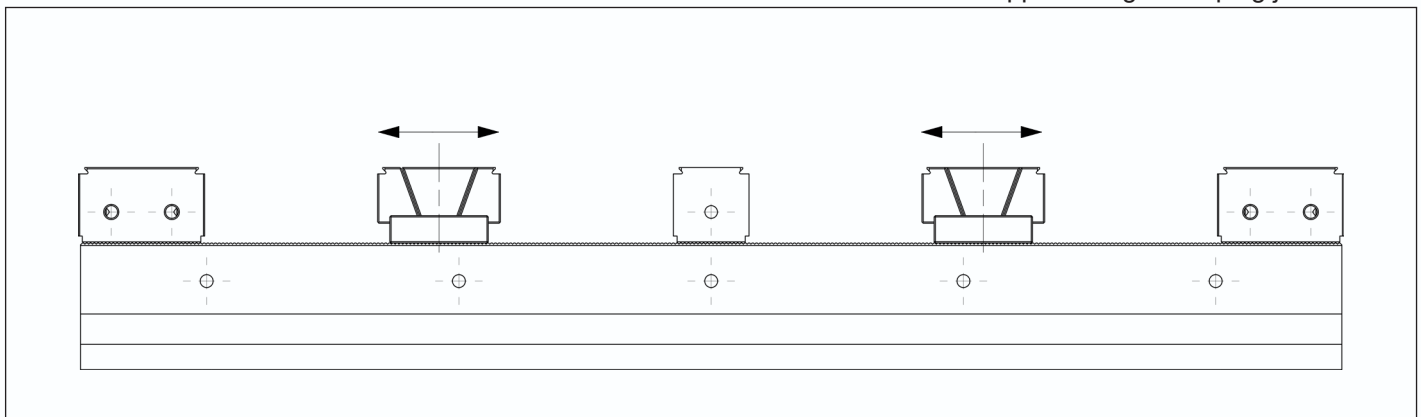
Description		Number of workpieces clamped							
		2	4	6	8	10	12	14	
KSD50-300	Maximum workpiece clamping size	78	20						
KSD50-400		128	45	18	4				
KSD50-500		178	70	35	16	6			
KSD50-600		228	95	50	29	16	7		
KSD50-650		253	108	58	35	21	11	4	

MD TYPE With wedge clamping jaws



Description		Number of workpieces clamped							
		2	4	6	8	10	12	14	
KSD50-300	Maximum workpiece clamping size	80	22						
KSD50-400		130	47	20	6				
KSD50-500		180	72	37	18	8			
KSD50-600		230	97	52	31	18	9		
KSD50-650		255	110	60	37	23	13	6	

MD-T TYPE With Stepped wedge clamping jaws



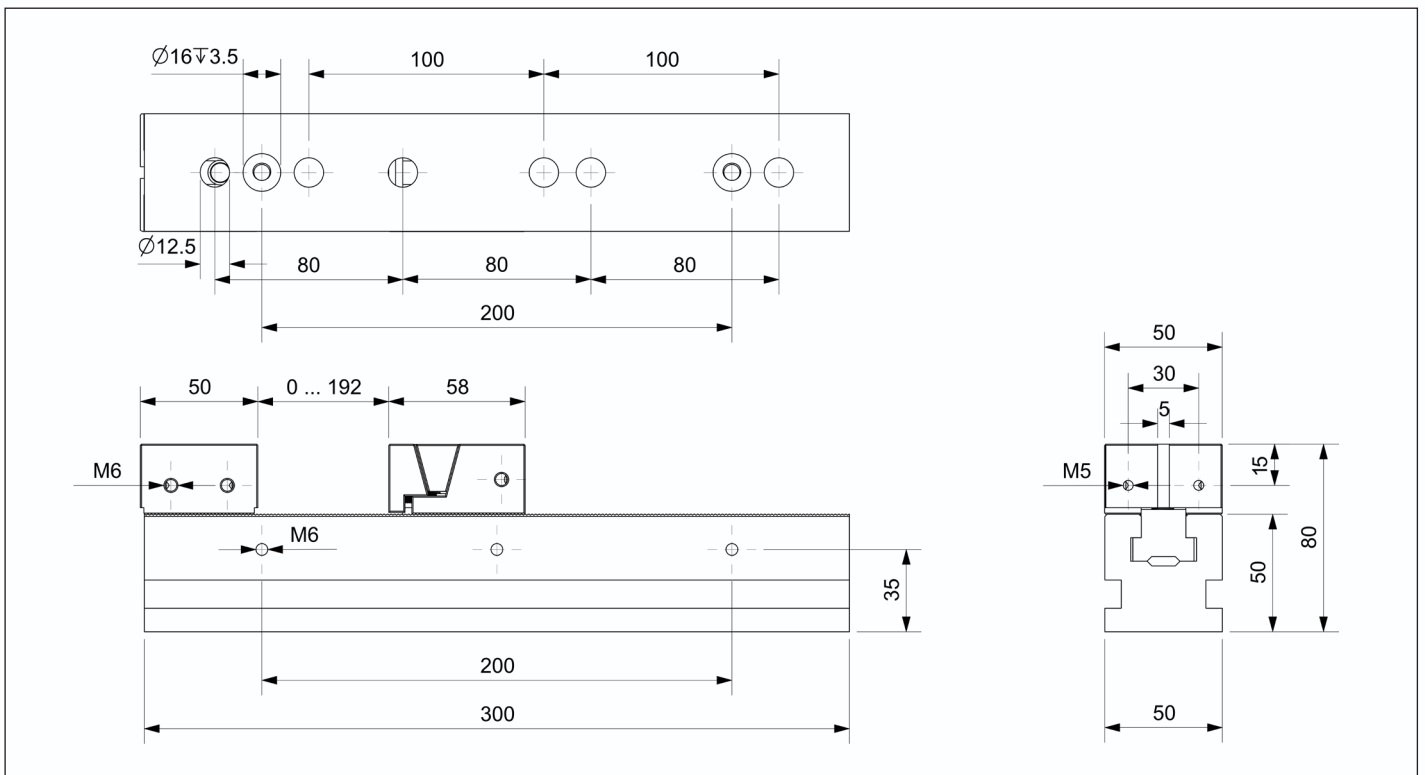
Clamping Rail

Without system jaws

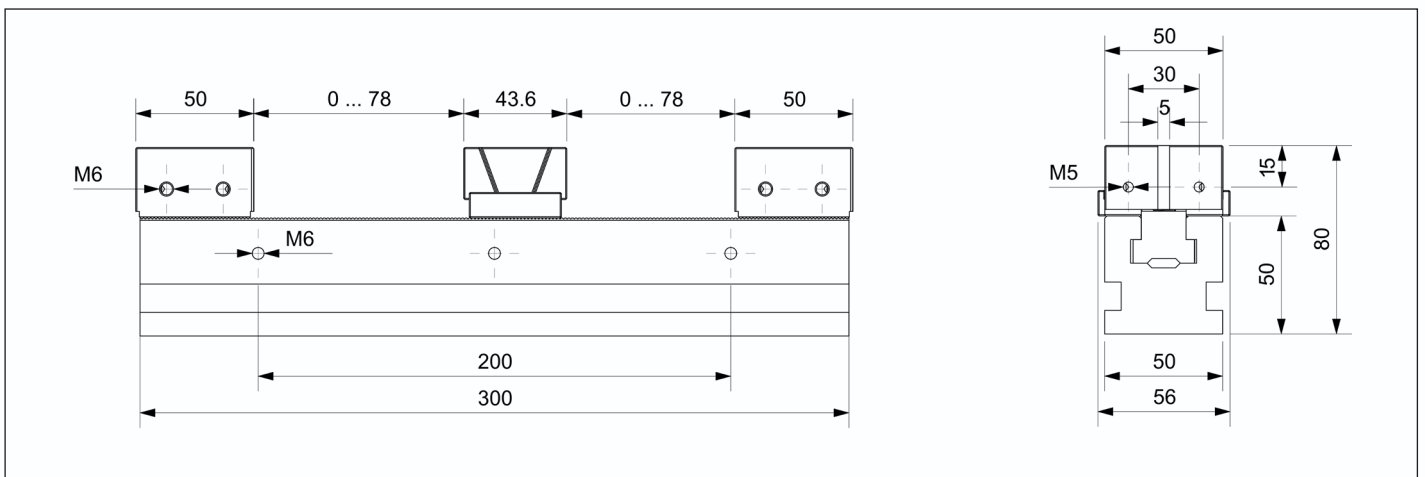
Scope of delivery
Clamping rail inclusive operating manual; without system jaws

Description	ID	Rail width [mm]	Clamping force [kN]	Max. torque [N.m]	Weight [kg]
KSD50-300	21010	50	17.86	30(FD) 60(MD)	4

KSD-50-300-FD TYPE



KSD-50-300-MD TYPE



Clamping Rail

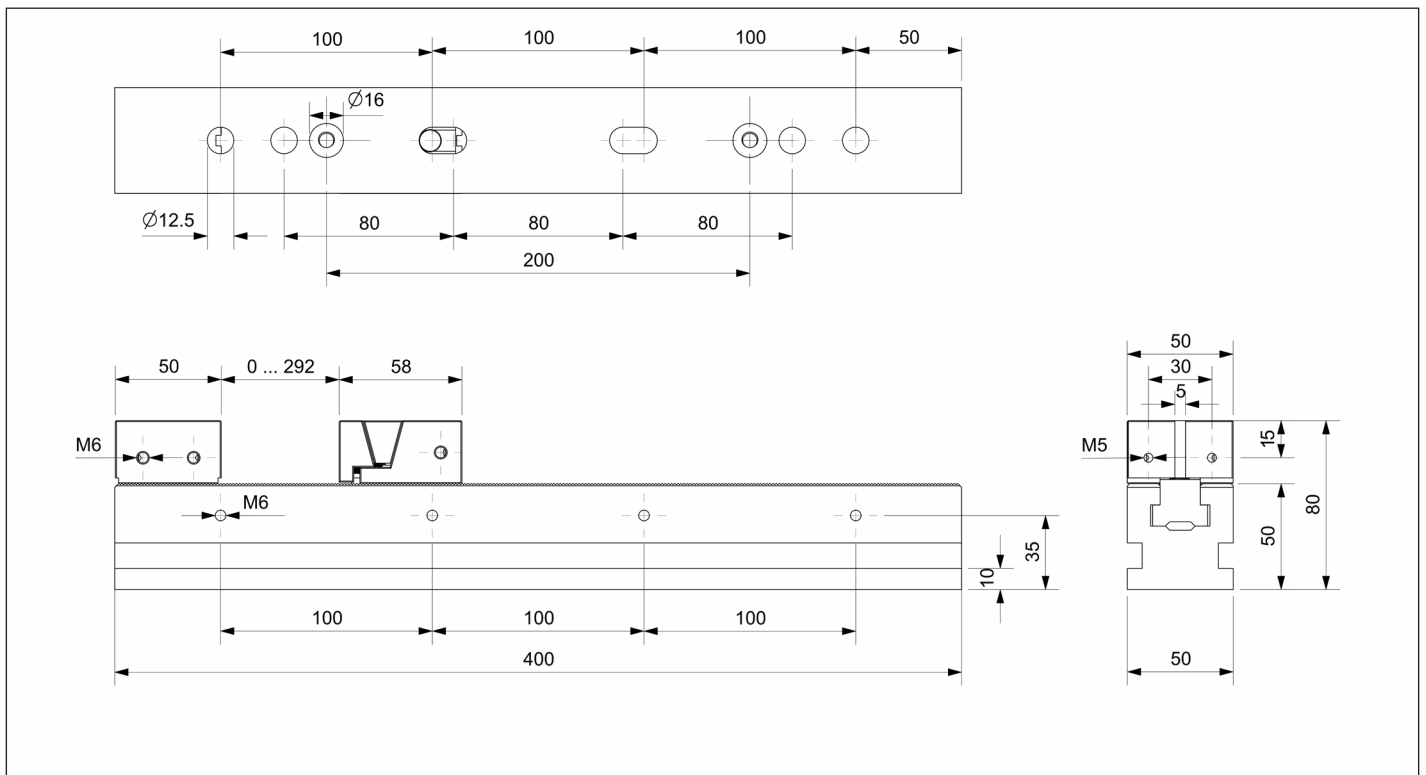
Without system jaws

Scope of delivery

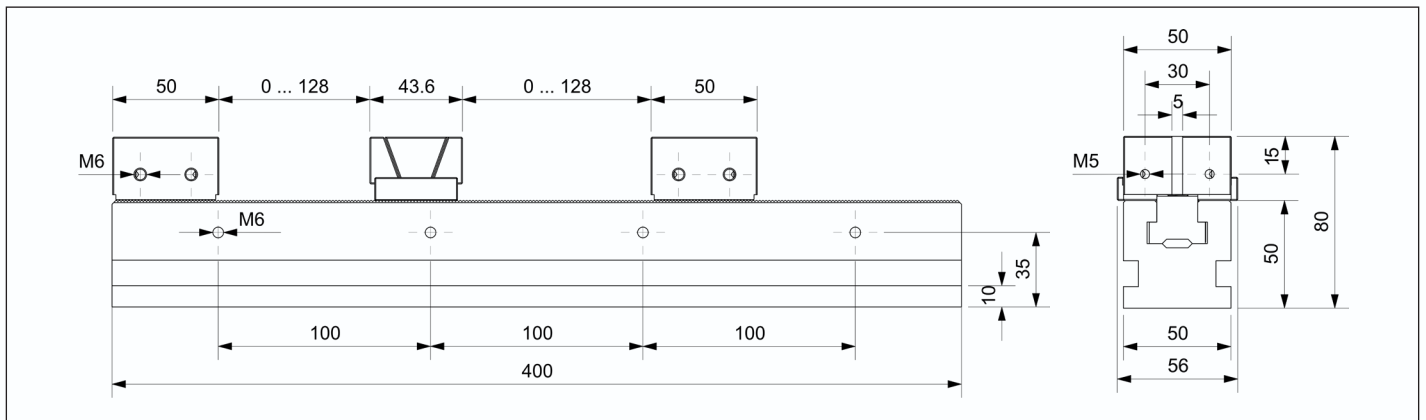
Clamping rail inclusive operating manual; without system jaws

Description	ID	Rail width [mm]	Clamping force [kN]	Max. torque [N.m]	Weight [kg]
KSD50-400	21020	50	17.86	30(FD) 60(MD)	5.4

KSD-50-400-FD TYPE



KSD-50-400-MD TYPE

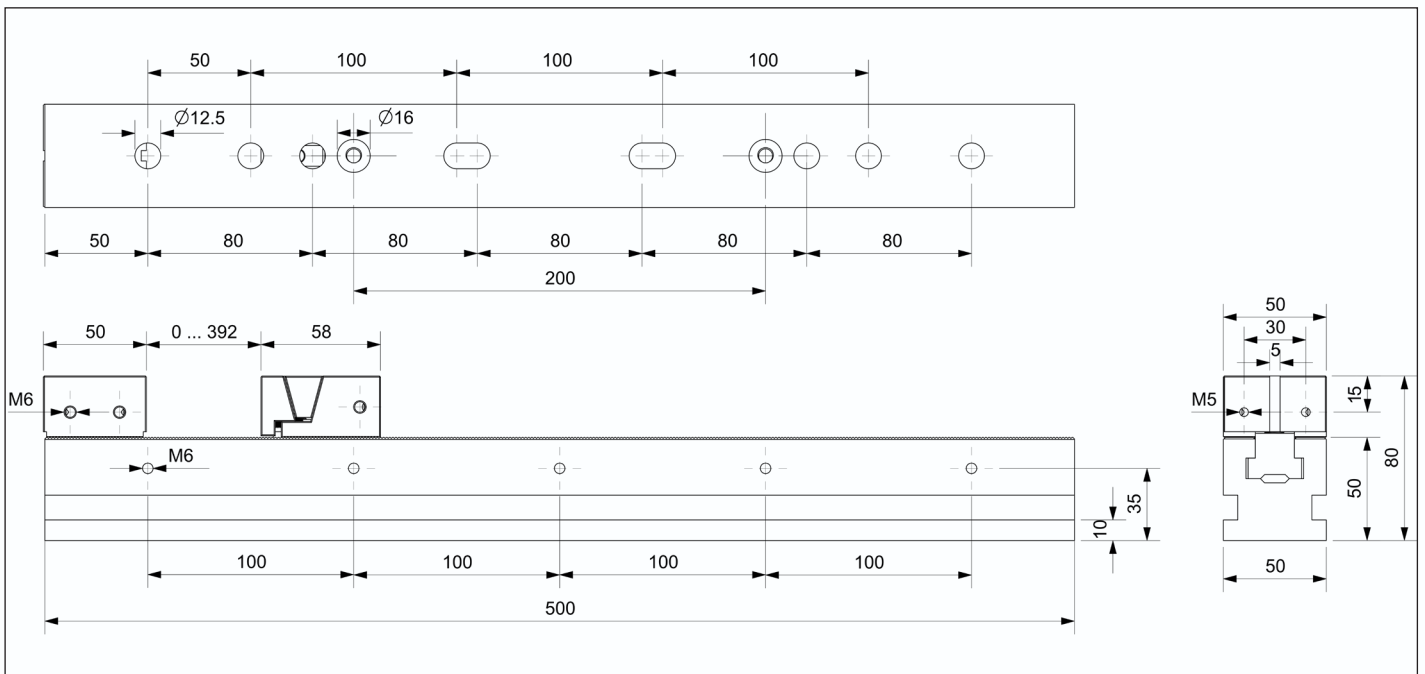


Clamping Rail Without system jaws

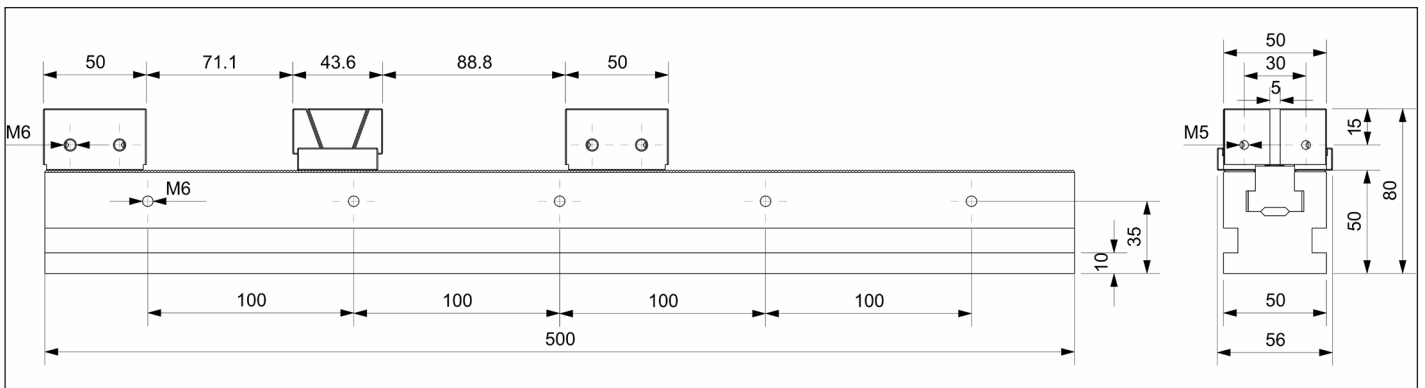
Scope of delivery
Clamping rail inclusive operating manual; without system jaws

Description	ID	Rail width [mm]	Clamping force [kN]	Max. torque [N.m]	Weight [kg]
KSD50-500	21030	50	17.86	30(FD) 60(MD)	6.7

KSD-50-500-FD TYPE



KSD-50-500-MD TYPE



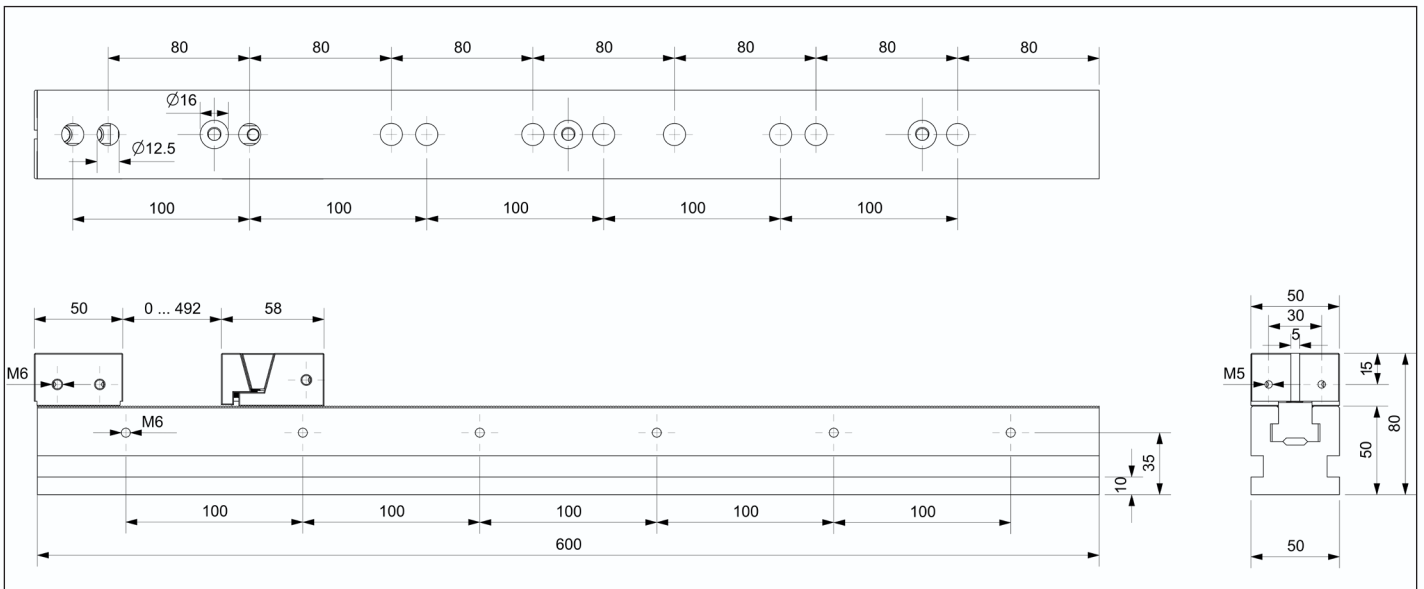
Clamping Rail

Without system jaws

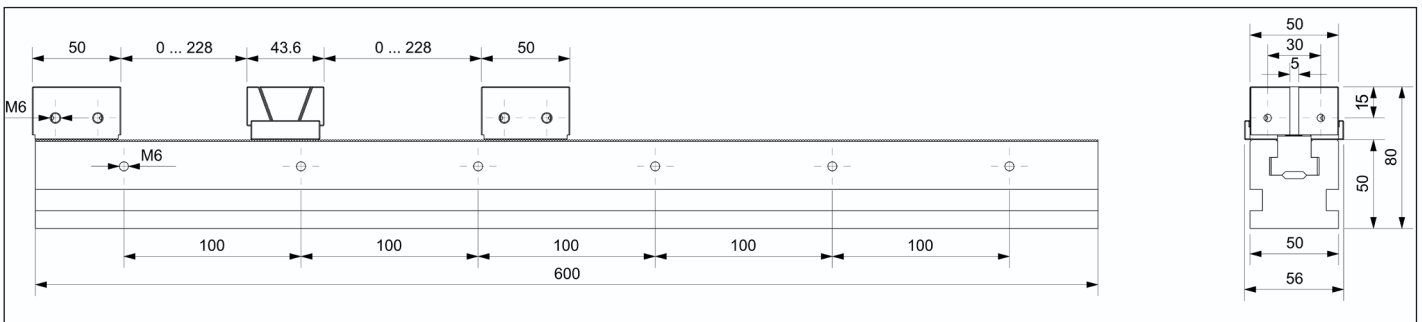
Scope of delivery
Clamping rail inclusive operating manual; without system jaws

Description	ID	Rail width [mm]	Clamping force [kN]	Max. torque [N.m]	Weight [kg]
KSD50-600	21040	50	17.86	30(FD) 60(MD)	8

KSD-50-600-FD TYPE



KSD-50-600-MD TYPE

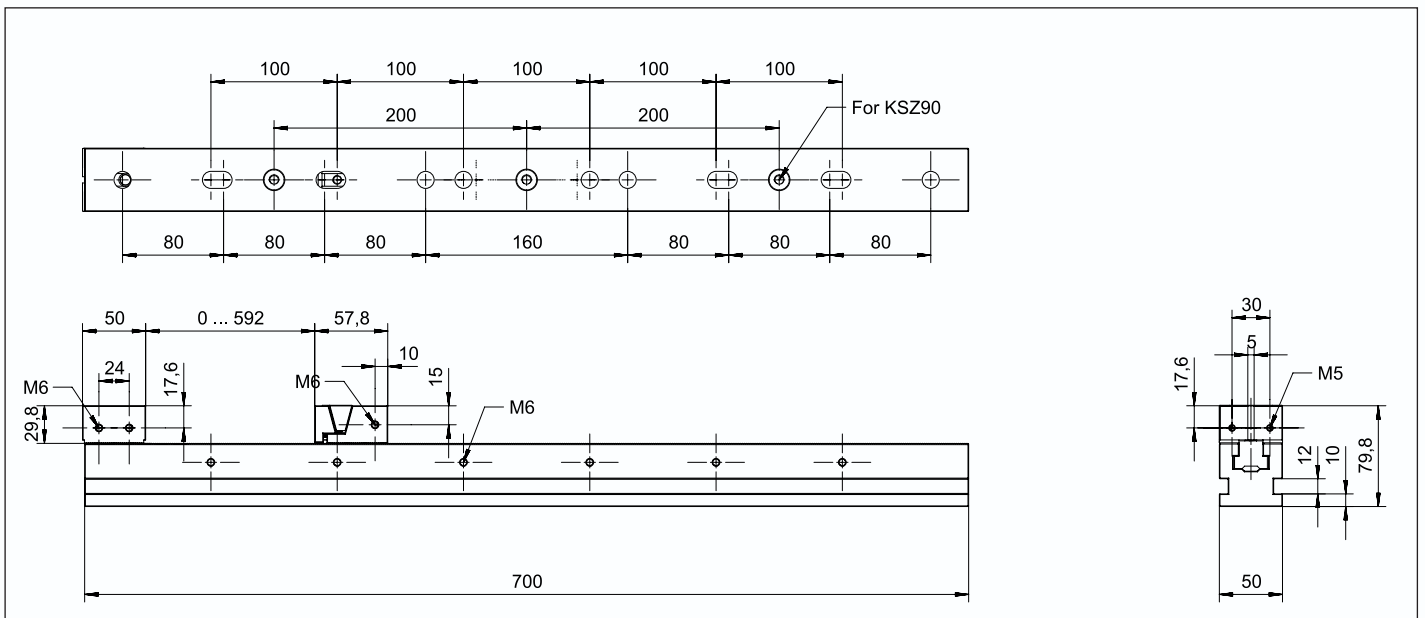


Clamping Rail Without system jaws

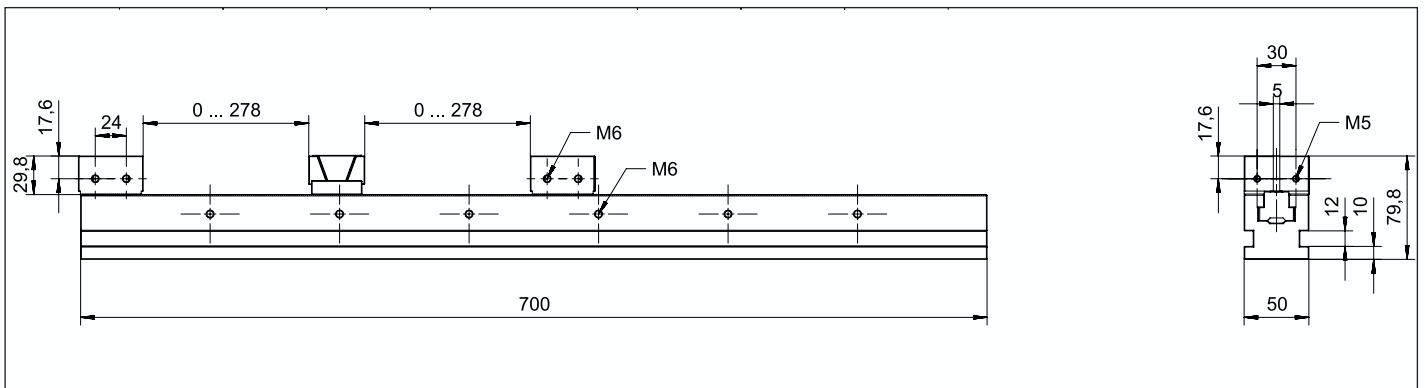
Scope of delivery
Clamping rail inclusive operating manual; without system jaws

Description	ID	Rail width [mm]	Clamping force [kN]	Max. torque [N.m]	Weight [kg]
KSD50-700	21050	50	17.86	30(FD) 60(MD)	10.8

KSD-50-700-FD TYPE



KSD-50-700-MD TYPE

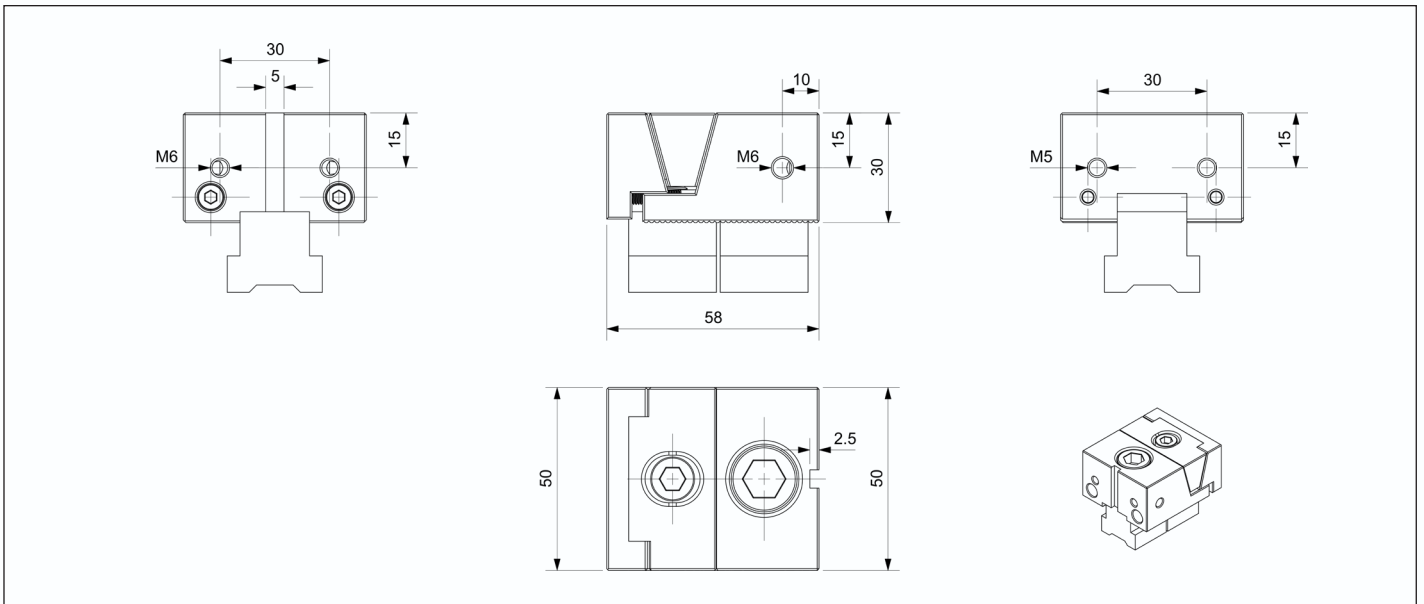


One-way Clamping Without Clamping Rail

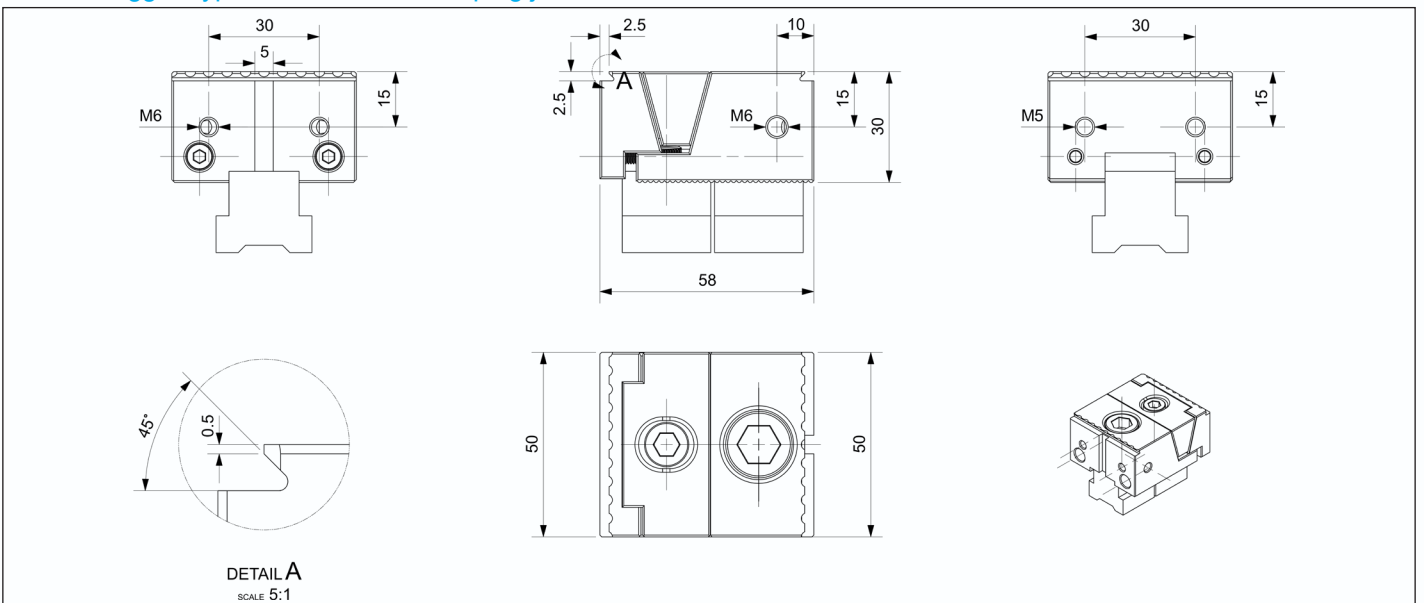
Scope of delivery
One-way Clamping inclusive operating manual; without Clamping Rail

Description	ID	Jaw width [mm]	Clamping force [kN]	Max. torque [N.m]	Weight [kg]
50FD	21100	50	17.86	30	0.8
50FD-T	21101	50	17.86	30	0.8

50FD type unidirectional clamping jaw



50FD-T Jagged type unidirectional clamping jaw

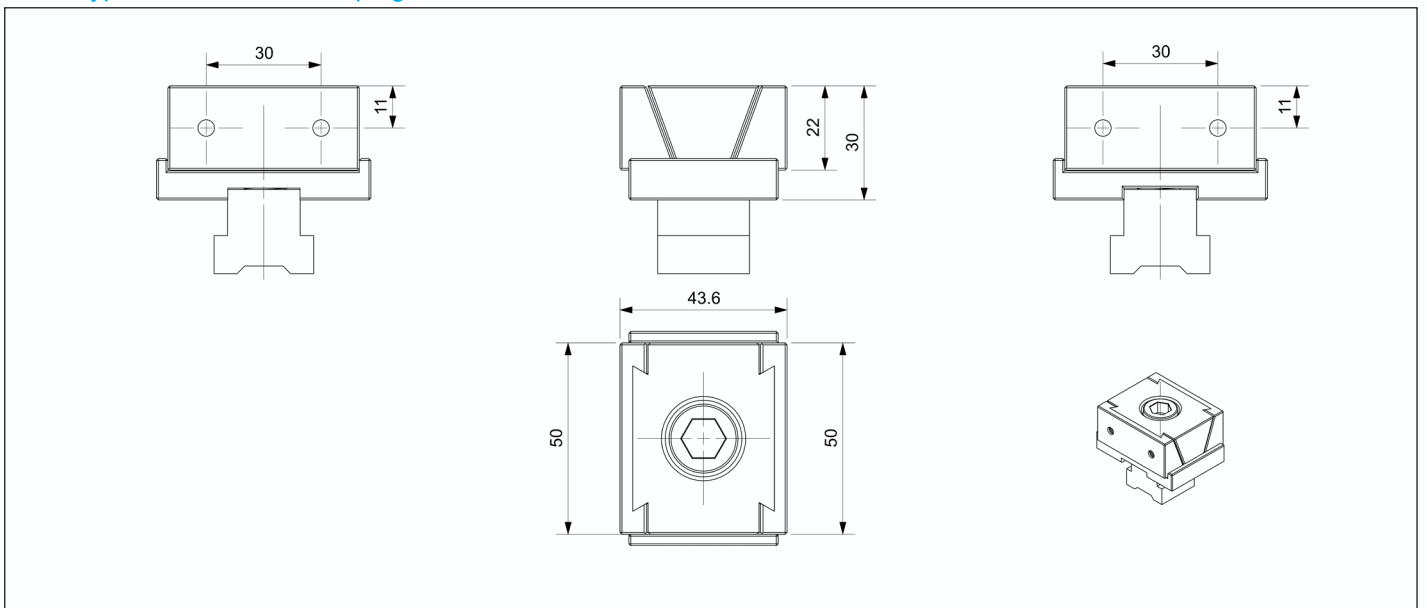


Two-way Clamping Without Clamping Rail

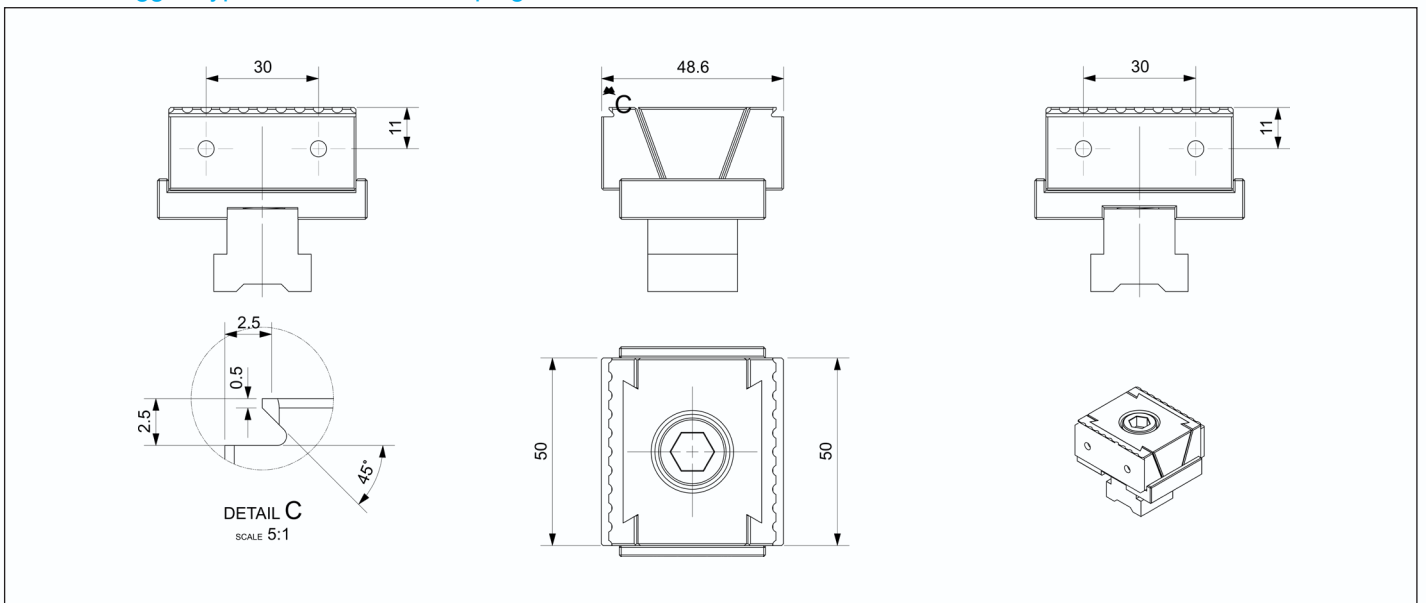
Scope of delivery
Two-way Clamping inclusive operating manual; without Clamping Rail

Description	ID	Jaw width [mm]	Clamping force [kN]	Max. torque [N.m]	Weight [kg]
50MD	21110	50	17.86	60	0.6
50MD-T	21111	50	17.86	60	0.6

50MD type Bidirectional Clamping Jaw



50MD-T Jagged type Bidirectional Clamping Jaw

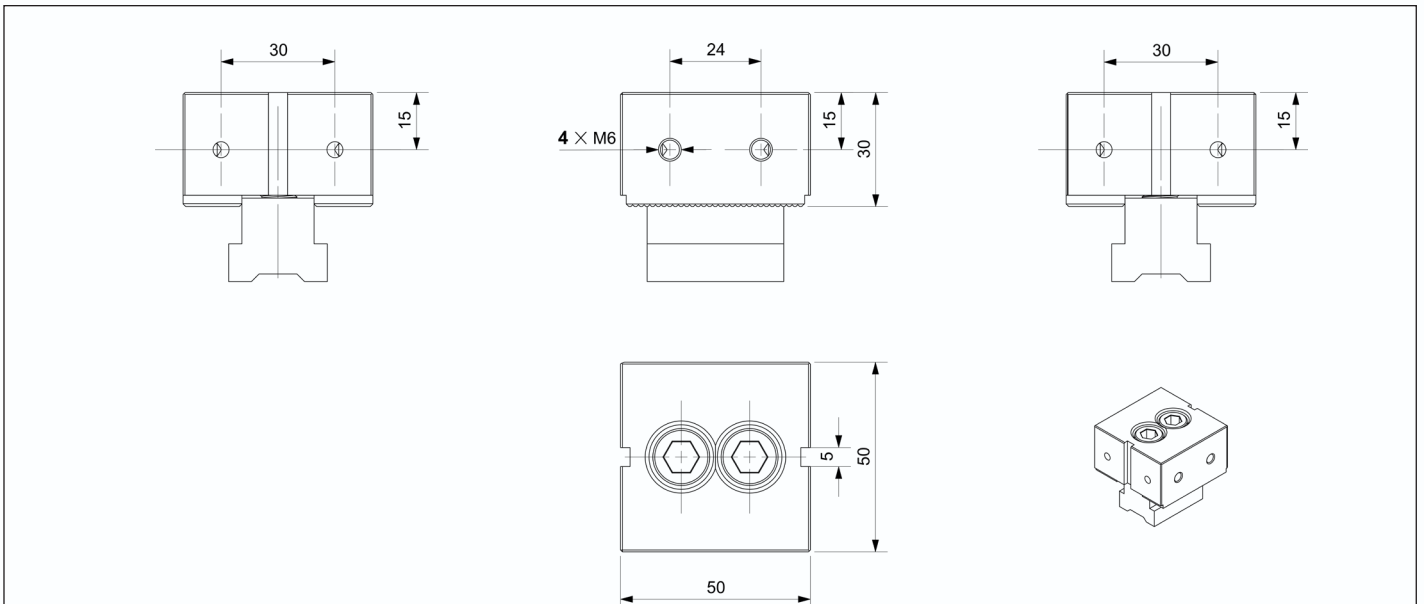


Fixed jaw Without Clamping Rail

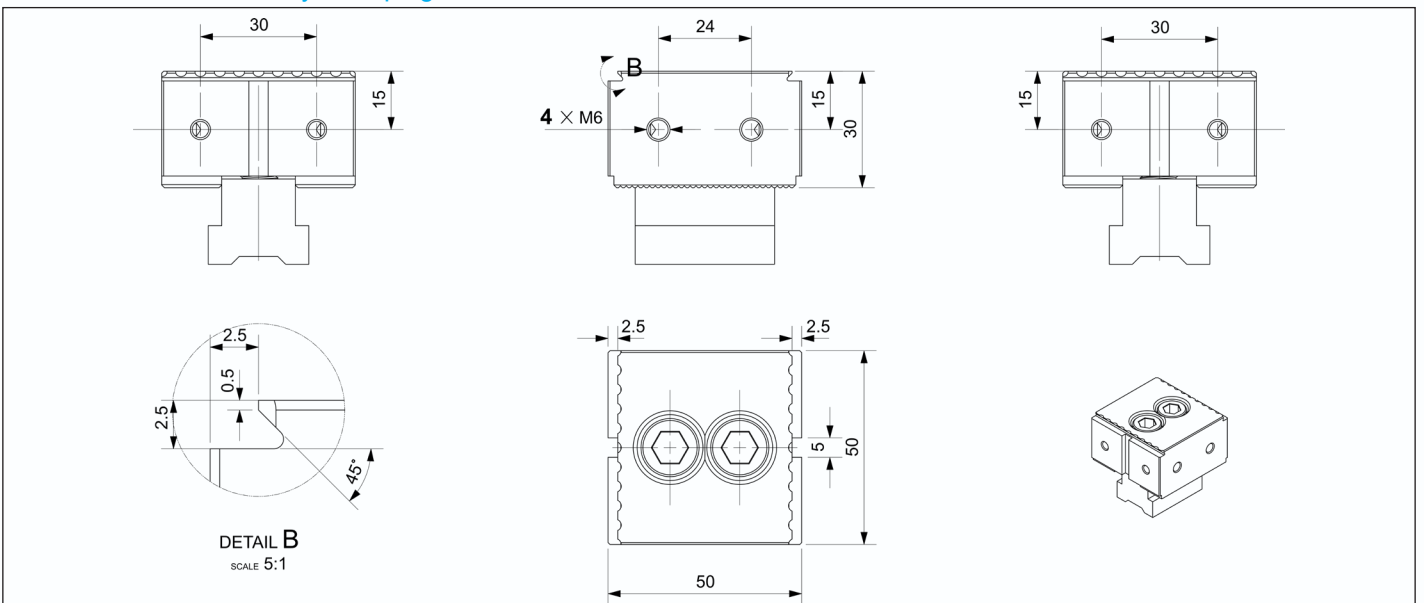
Scope of delivery
Fixed jaw inclusive operating manual; without Clamping Rail

Description	ID	Jaw width [mm]	Clamping force [kN]	Max. torque [N.m]	Weight [kg]
50G	21201	50	-	80	0.65
50G-T	21202	50	-	80	0.65

50G type Stationary clamping jaw



50G-T Serrated Stationary Clamping Jaw

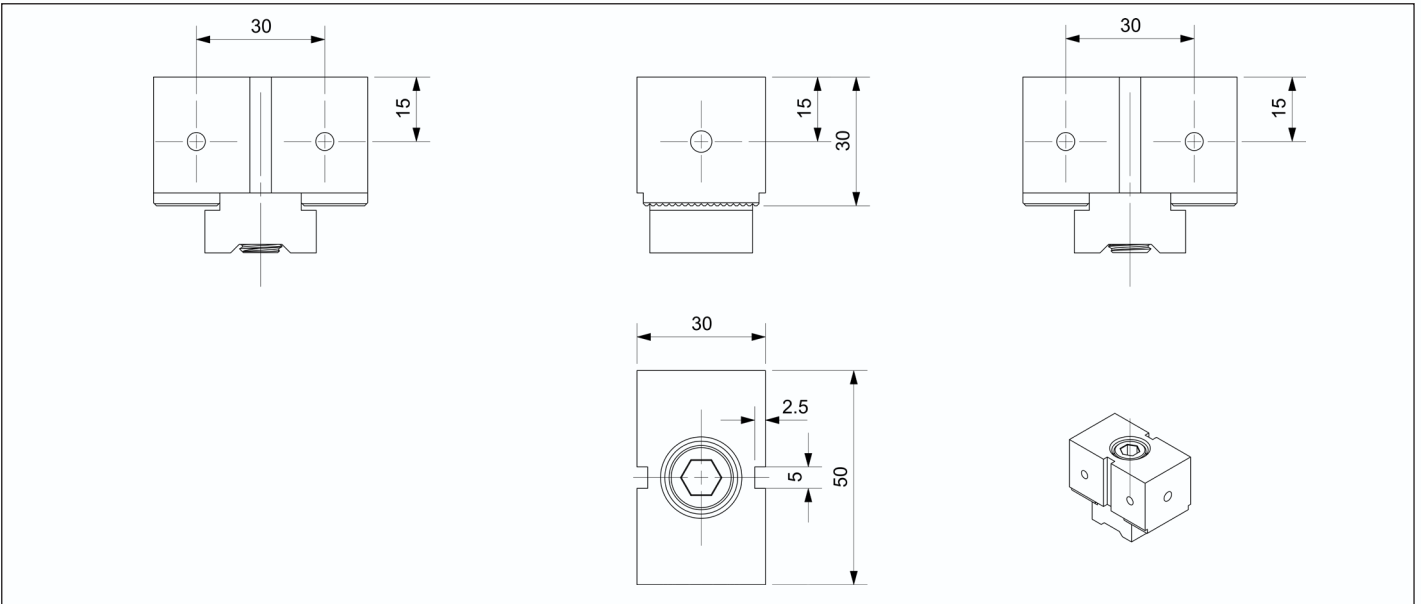


Fixed jaw Without Clamping Rail

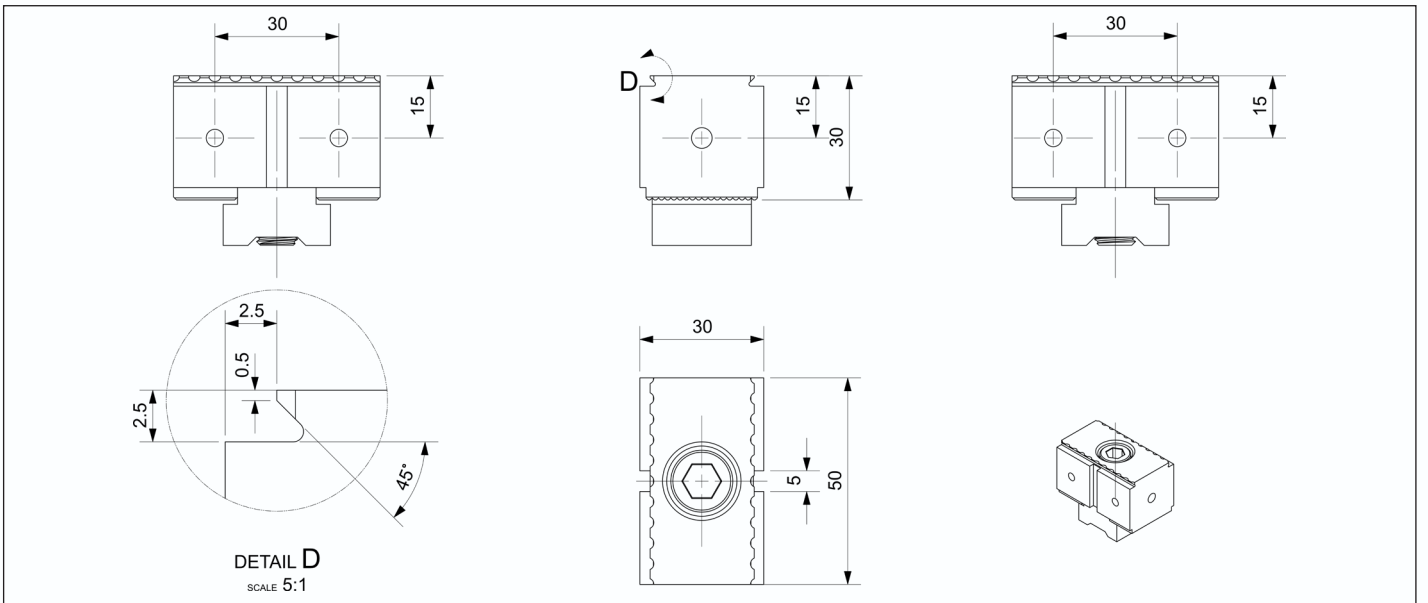
Scope of delivery
Fixed jaw inclusive operating manual; without Clamping Rail

Description	ID	Jaw width [mm]	Clamping force [kN]	Max. torque [N.m]	Weight [kg]
50SG	21203	50	-	80	0.4
50SG-T	21204	50	-	80	0.4

50SG 固定钳口 |



50SG-T 锯齿型固定钳口 | 50SG-T



Soft claw**Customizable production**

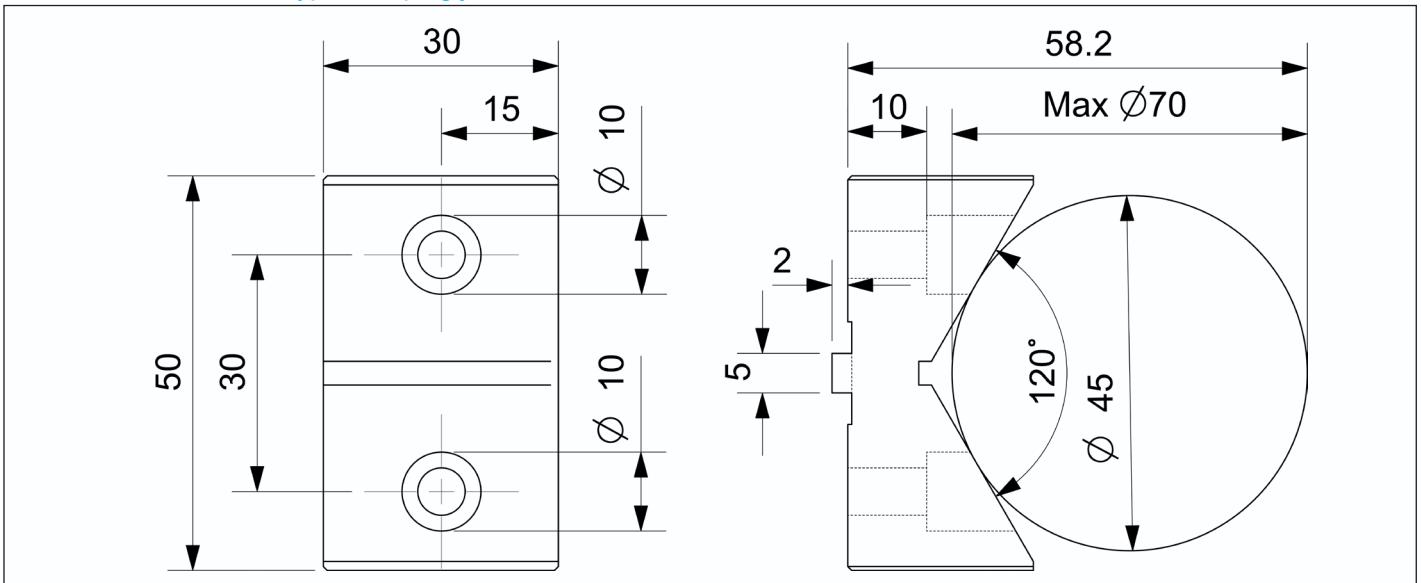
Material: S45C, hardenable | Aluminum 6061

Version: Fastening bores for screw DIN EN ISO 4762

Mounting: Via tongue and groove

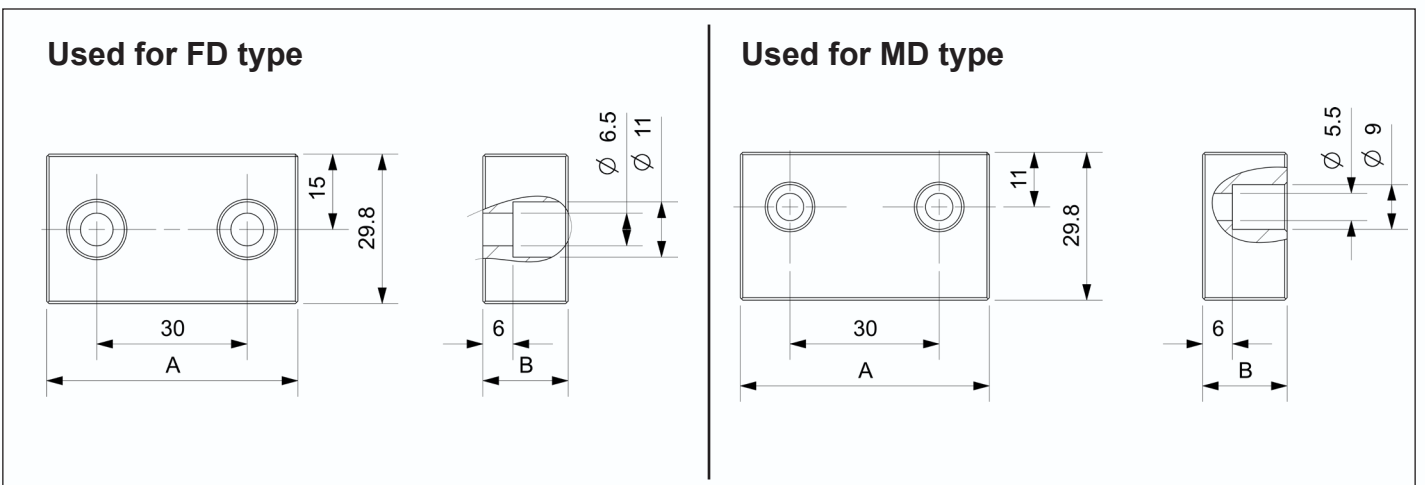
Description	ID	Jaw width [mm]	Clamping range [mm]	Weight [kg]
50RZ-V	21211	50	MAX $\Phi 70$	0.2

50RZ-V 型软爪 | 50RZ-V type clamping jaw



Description	ID	Jaw width A [mm]	Jaw high B [mm]	Weight [kg]
50RZ-B17FD-B	21212-FD	50	17	0.2
50RZ-B27FD-B	21213-FD	80	27	0.5
50RZ-B17MD-B	21212-MD	50	17	0.2
50RZ-B27MD-B	21213-MD	80	27	0.5

50RZ-B type soft jaw



Soft claw

Customizable production

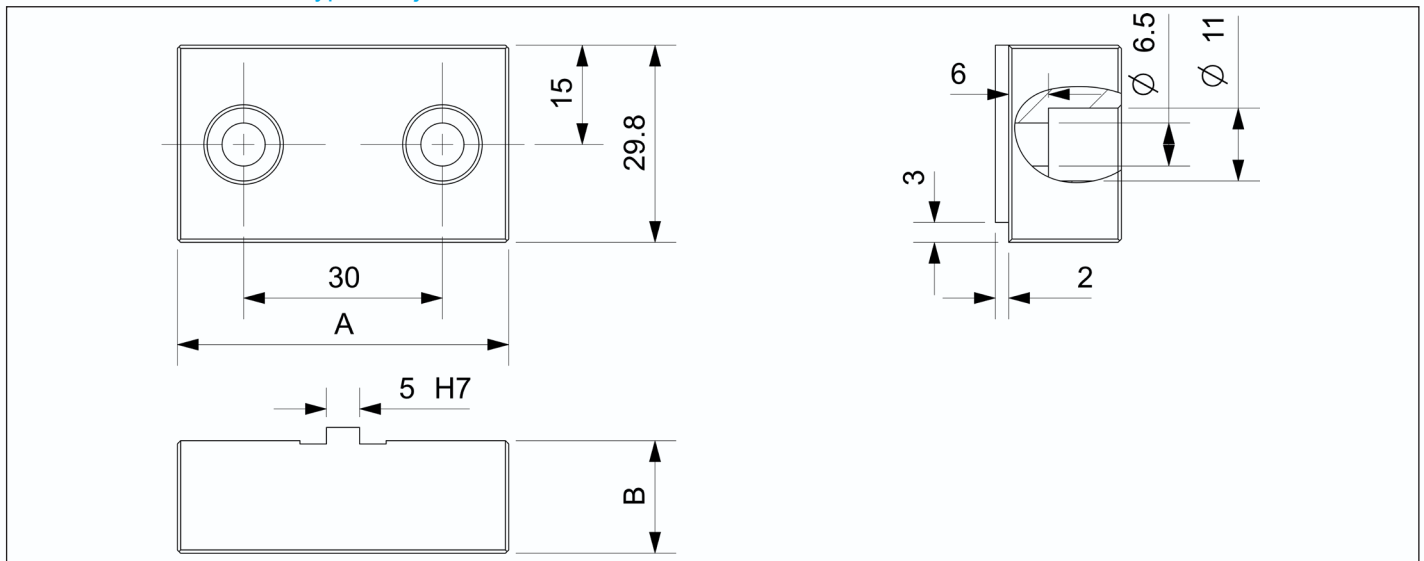
Material: S45C, hardenable | Aluminum 6061

Version: Fastening bores for screw DIN EN ISO 4762

Mounting: Via tongue and groove

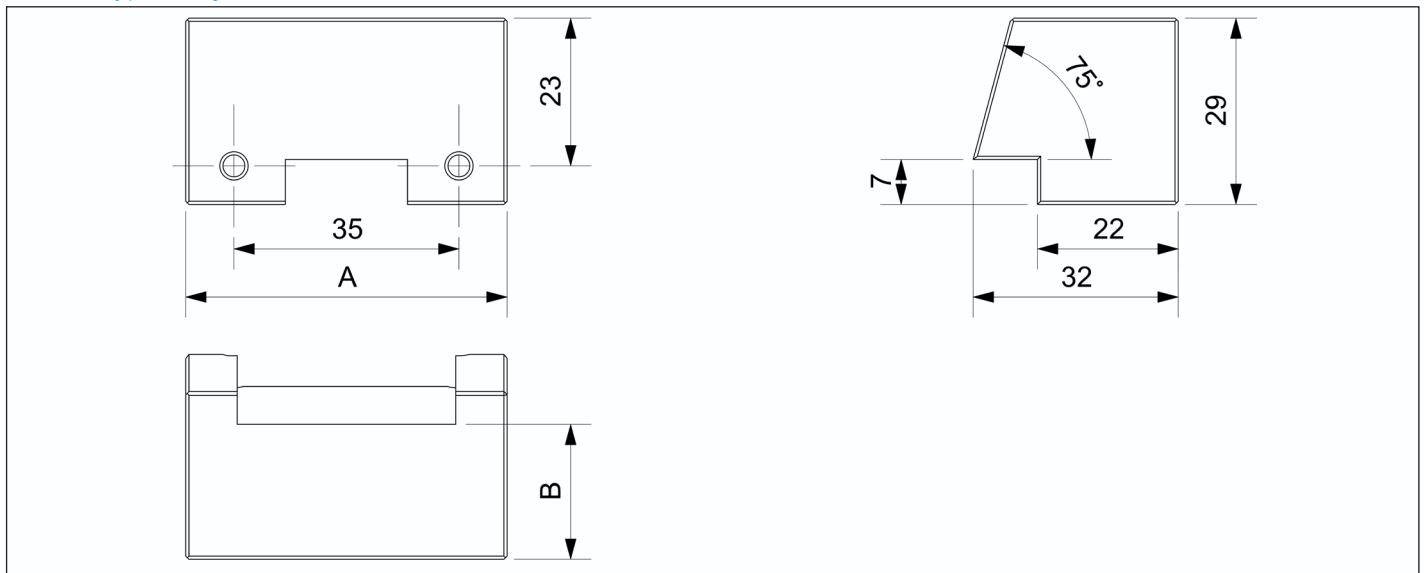
Description	ID	Jaw width A [mm]	Jaw high B [mm]	Weight [kg]
50RZ-B17-A	21214	50	17	0.3
50RZ-B27-A	21215	80	27	0.5

50RZ-A 型软爪 | 50RZ-A type soft jaw



Description	ID	Jaw width A [mm]	Jaw high B [mm]	Weight [kg]
50RZ-B21-C	21216	50	21	0.4
50RZ-B34-C	21217	80	34	0.8

50RZ-C type soft jaw



Parallel gasket

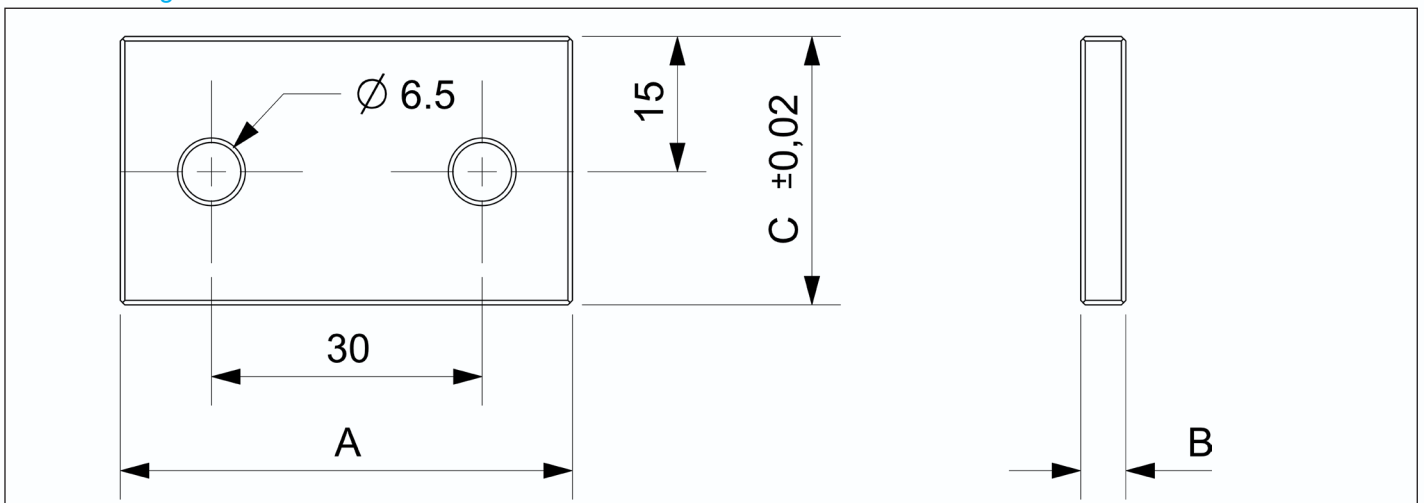
Customizable production

Material: 4140, HRC54-58

Version: Fastening bores for screw DIN EN ISO 4762 Mounting: Installation through mounting holes

Description	ID	Jaw width A [mm]	Jaw high B [mm]	Jaw high C [mm]	Weight [kg]
50DP-522	21221	50	5	22	0.05
50DP-525	21222	50	5	25	0.06
50DP-527	21223	50	5	27	0.07

0DP Parallel gasket



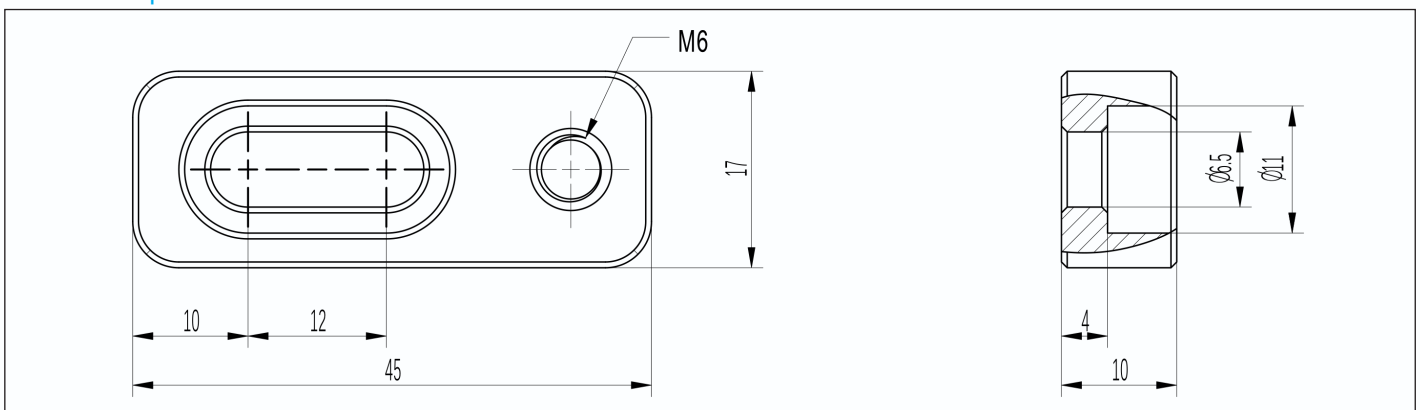
50DW work positioner

Instructions for use

Determine the position of the workpiece

Description	ID	Weight [kg]
50DW	21225	0.2

50DW work positioner

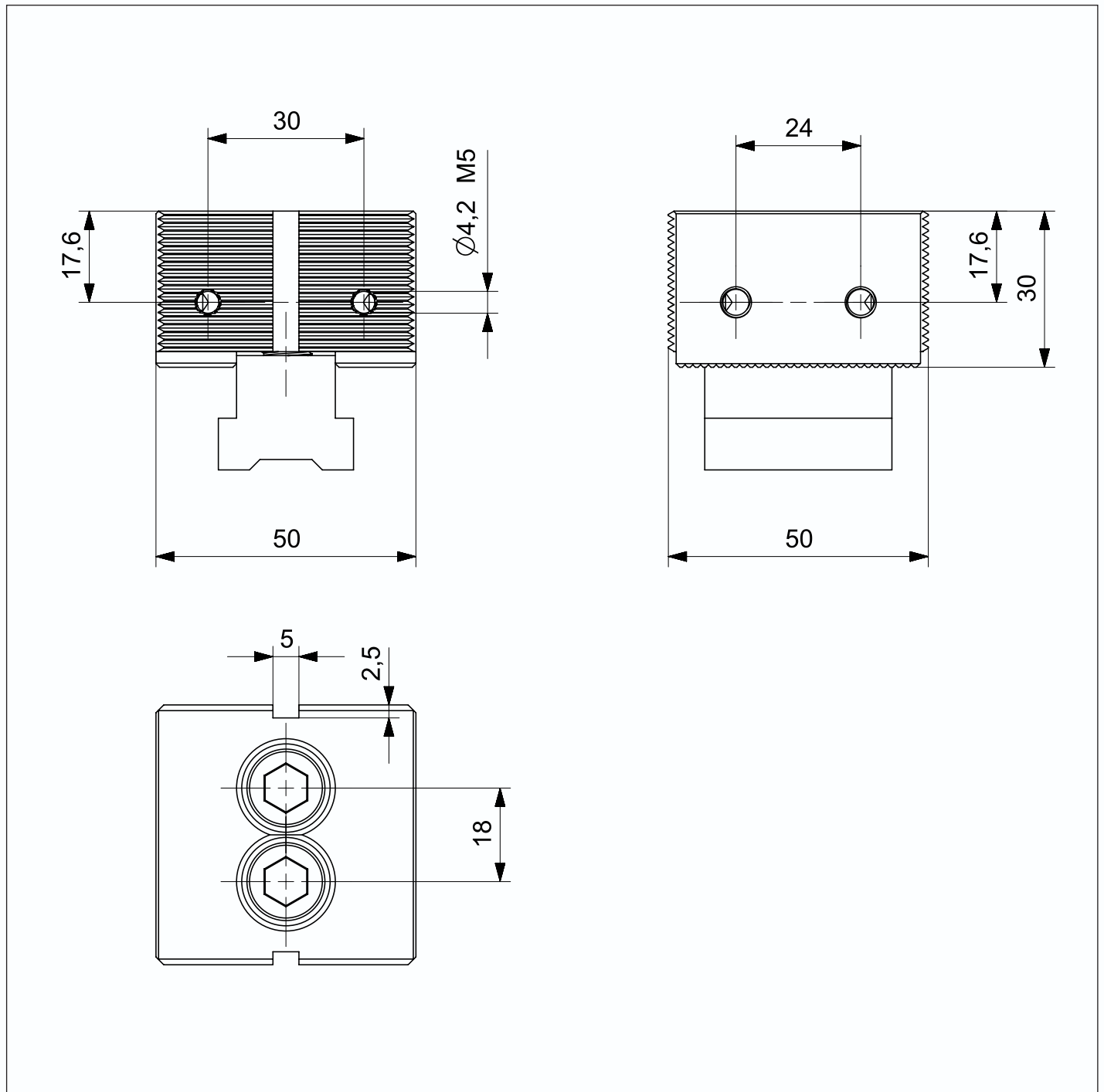


Customizable production

Material:
Version: Fastening bores for screw DIN EN ISO 4762
Mounting: Via tongue and groove

Description	ID	Jaw width A [mm]	Jaw high B [mm]	Weight [kg]
50G-MT	21250	50	50	1.3

50G-MT 齿型固定钳口 | 50G-MT



Serrated Jaw

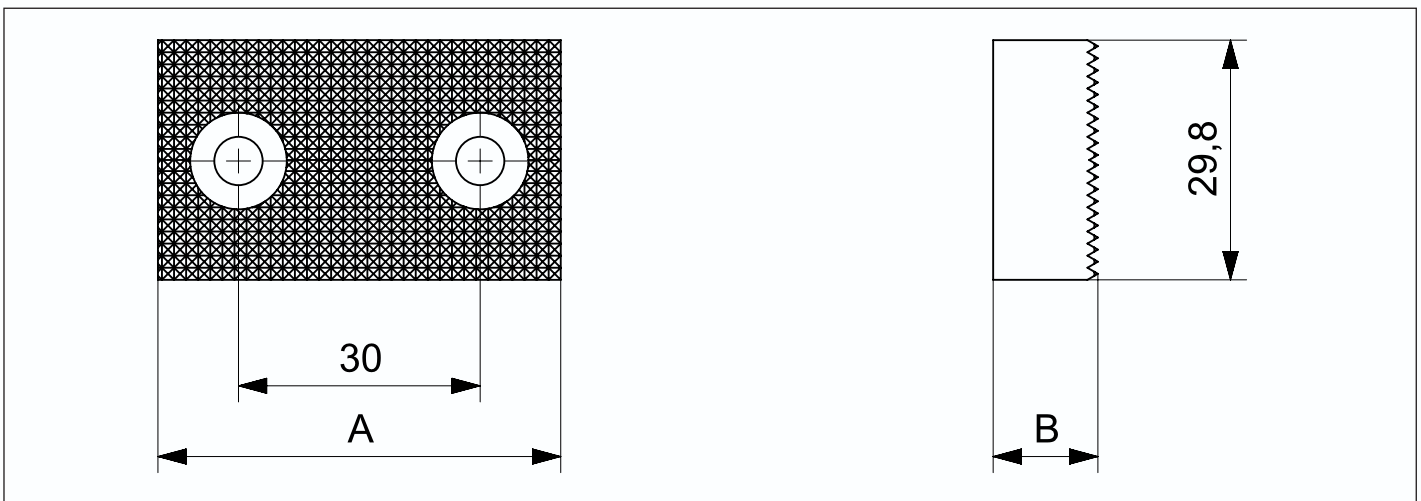
Customizable production

Material: 4140, HRC48-52

Version: Fastening bores for screw DIN EN ISO 4762 Mounting: Installation through mounting holes

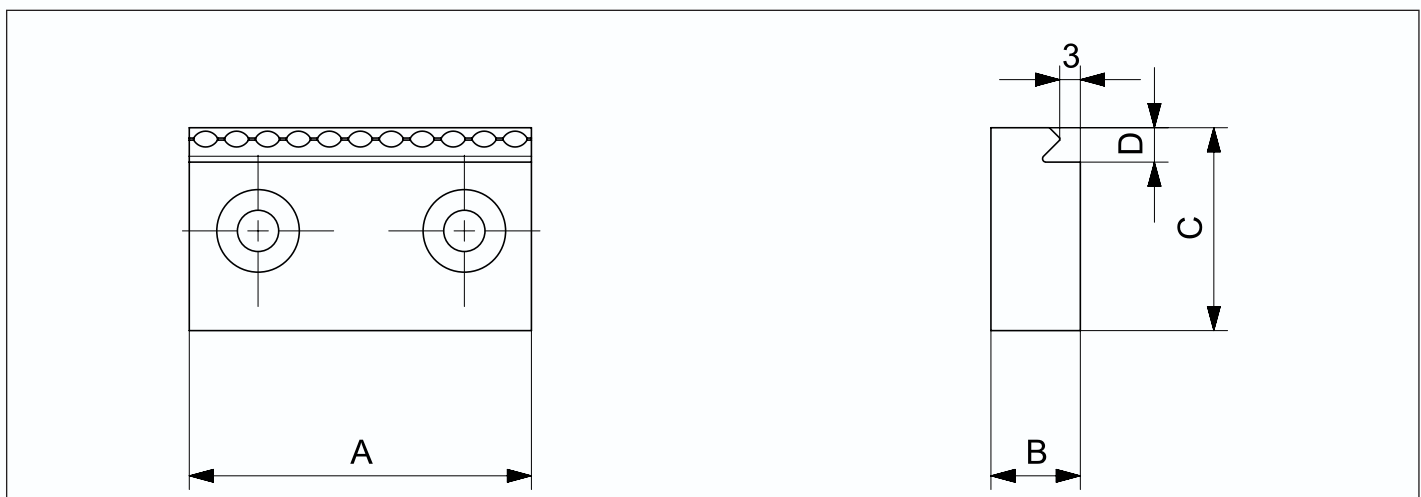
Description	ID	Jaw width A [mm]	Jaw high B [mm]	Jaw high C [mm]	Weight [kg]
50C-5010	21260	50	10	30	0.3
50C-5013	21262	50	13	32	0.5
50C-7520	21264	75	20	35	0.8

50C Serrated Jaw



Description	ID	Jaw width A [mm]	Jaw high B [mm]	Jaw high C [mm]	Jaw high D [mm]	Weight [kg]
50C-5010T	21261	50	10	30	5	0.3
50C-5013T	21263	50	13	32	5	0.5
50C-7520T	21265	75	20	35	5	0.8

50C Serrated Step Jaw



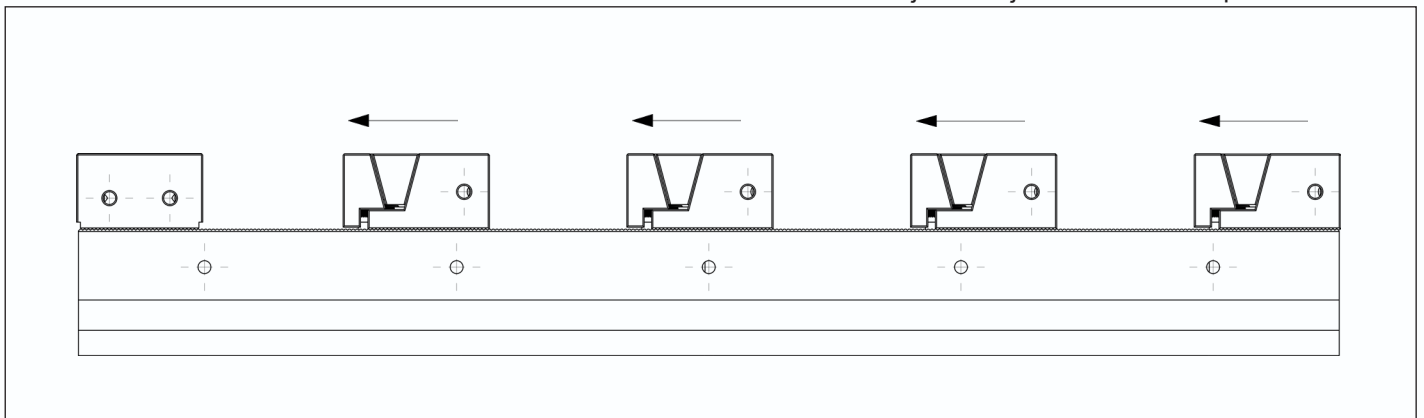
Clamping Capacity

The clamping range shows the max.

The maximum size of the workpiece that can be clamped depends on the length of the guide rail and the number of clamping areas.

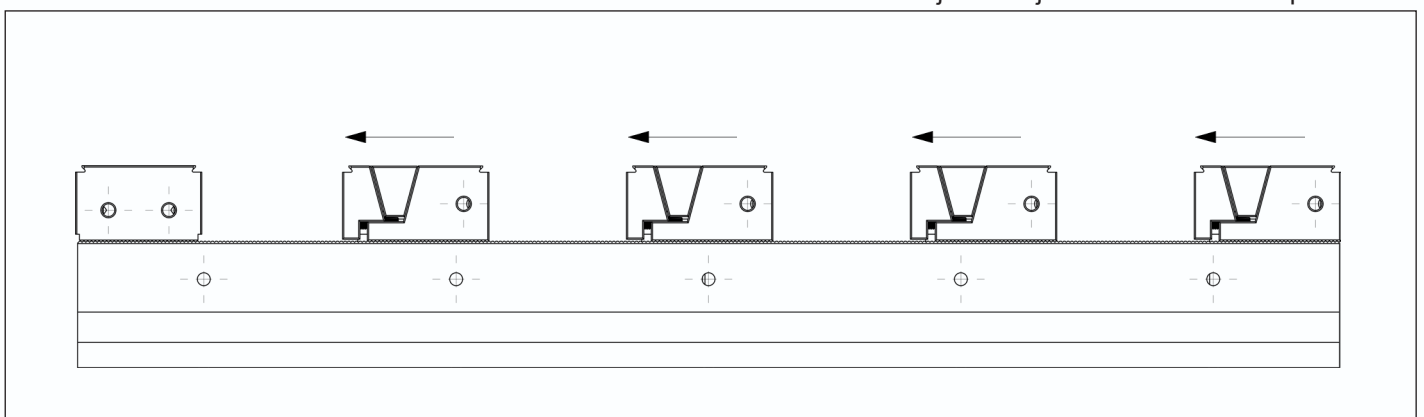
Description		Number of workpieces clamped								
		1	2	3	4	5	6	7	8	9
KSD88-400	Maximum workpiece clamping size	267	92	33						
KSD88-500		367	142	67	29					
KSD88-600		467	192	100	54	27				
KSD88-650		517	217	117	67	37	17			
KSD88-700		567	242	133	79	47	25	10		

FD TYPE Adjustable jaws with Parallel plane



Description		Number of workpieces clamped								
		1	2	3	4	5	6	7	8	9
KSD88-400	Maximum workpiece clamping size	272	97	38	9.5					
KSD88-500		372	147	72	34	12				
KSD88-600		472	197	105	59	32	13			
KSD88-650		522	222	122	72	42	22	7		8
KSD88-700		572	247	138	84	52	30	15		13

FD-T TYPE Adjustable jaws with Toothed steps



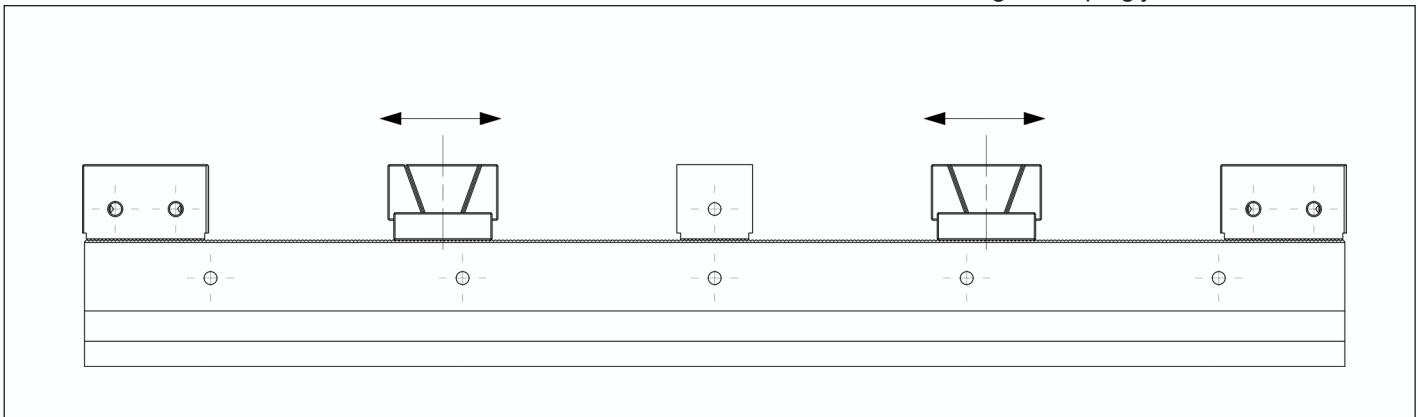
Clamping Capacity

The clamping range shows the max.

The maximum size of the workpiece that can be clamped depends on the length of the guide rail and the number of clamping areas.

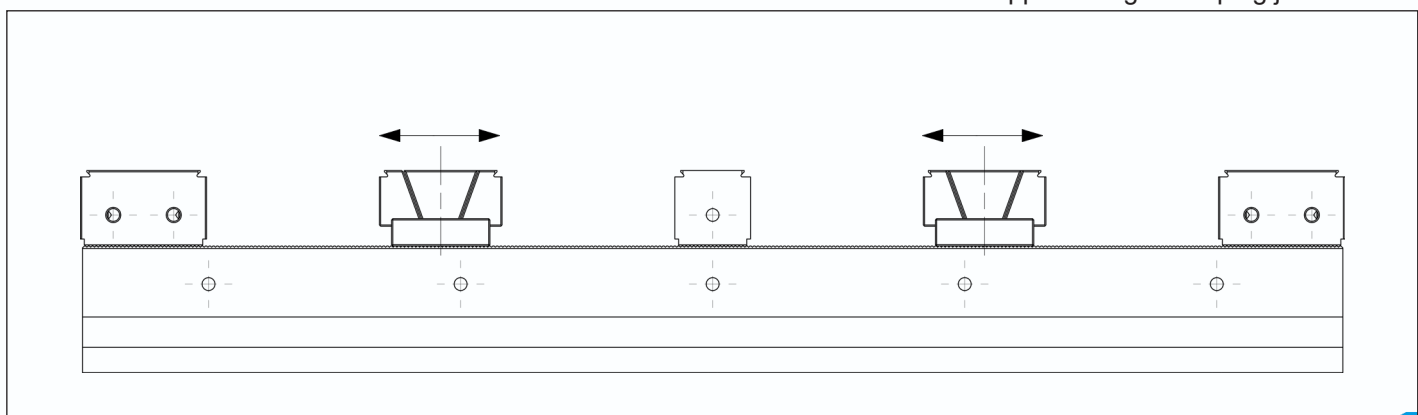
Description		Number of workpieces clamped							
		2	4	6	8	10	12	14	
KSD88-400	Maximum workpiece clamping size	113	26						
KSD88-500		163	51	14					
KSD88-600		213	76	30	10				
KSD88-650		238	88	38	18				
KSD88-700		263	101	47	27	5			

MD TYPE With wedge clamping jaws



Description		Number of workpieces clamped							
		2	4	6	8	10	12	14	
KSD88-400	Maximum workpiece clamping size	118	31						
KSD88-500		168	56	19					
KSD88-600		218	81	35	15				
KSD88-650		243	93	43	23				
KSD88-700		268	106	52	32	10			

MD-T TYPE With Stepped wedge clamping jaws



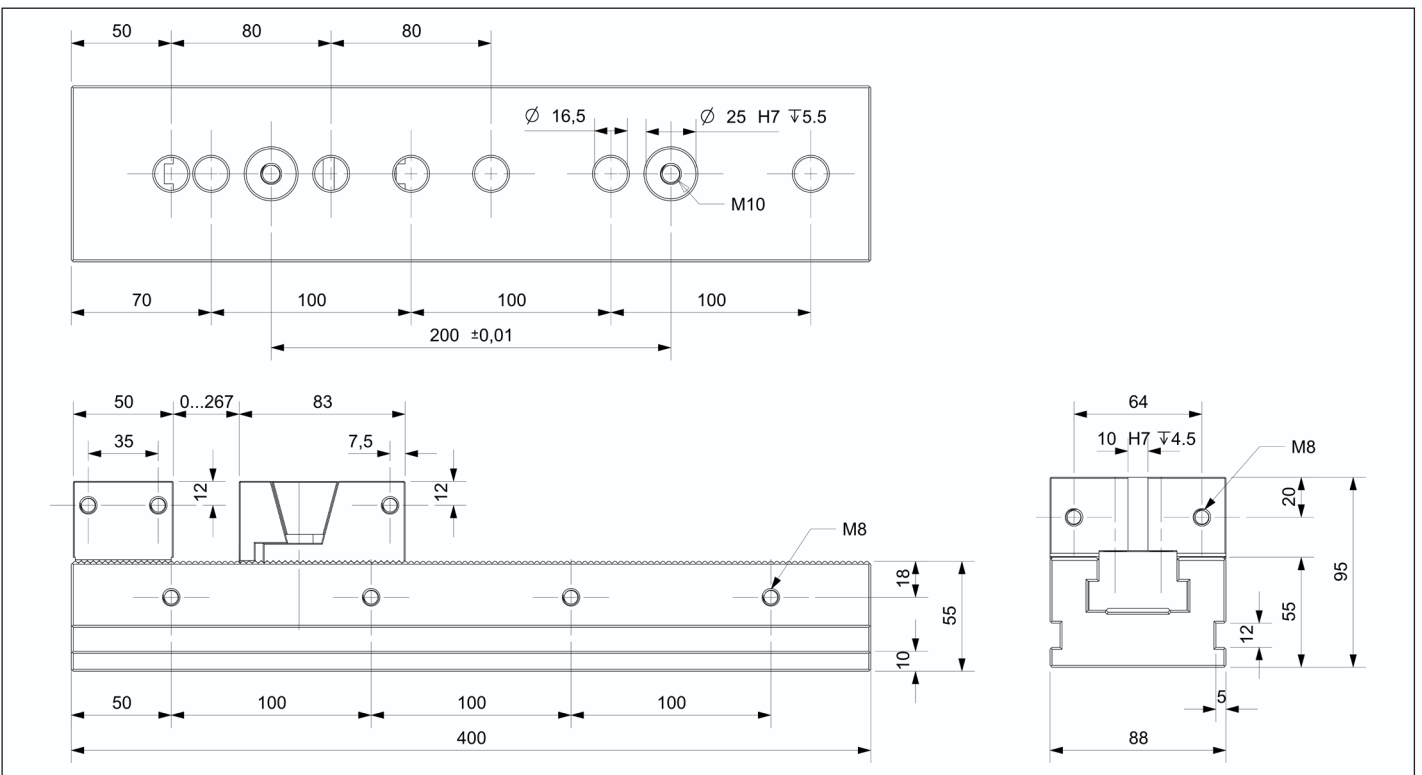
Clamping Rail

Without system jaws

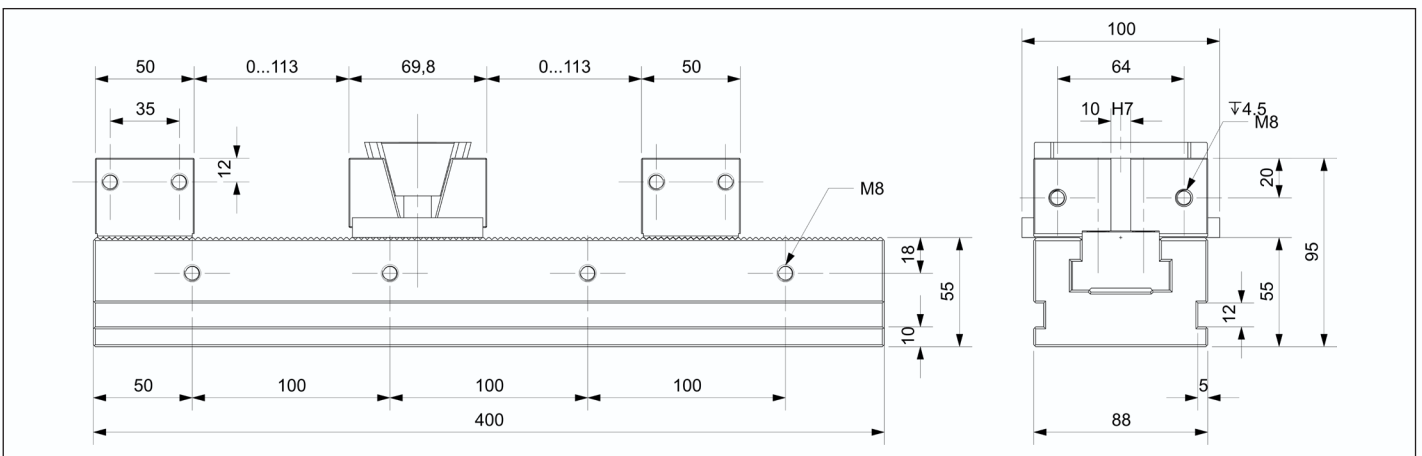
Scope of delivery
Clamping rail inclusive operating manual; without system jaws

Description	ID	Rail width [mm]	夹紧力 Clamping force [kN]	最高扭力 Max. torque [N.m]	重量 Weight [kg]
KSD88-400	21510	88	35.6	80(FD)	14

KSD-88-400-FD TYPE



KSD-88-400-MD TYPE



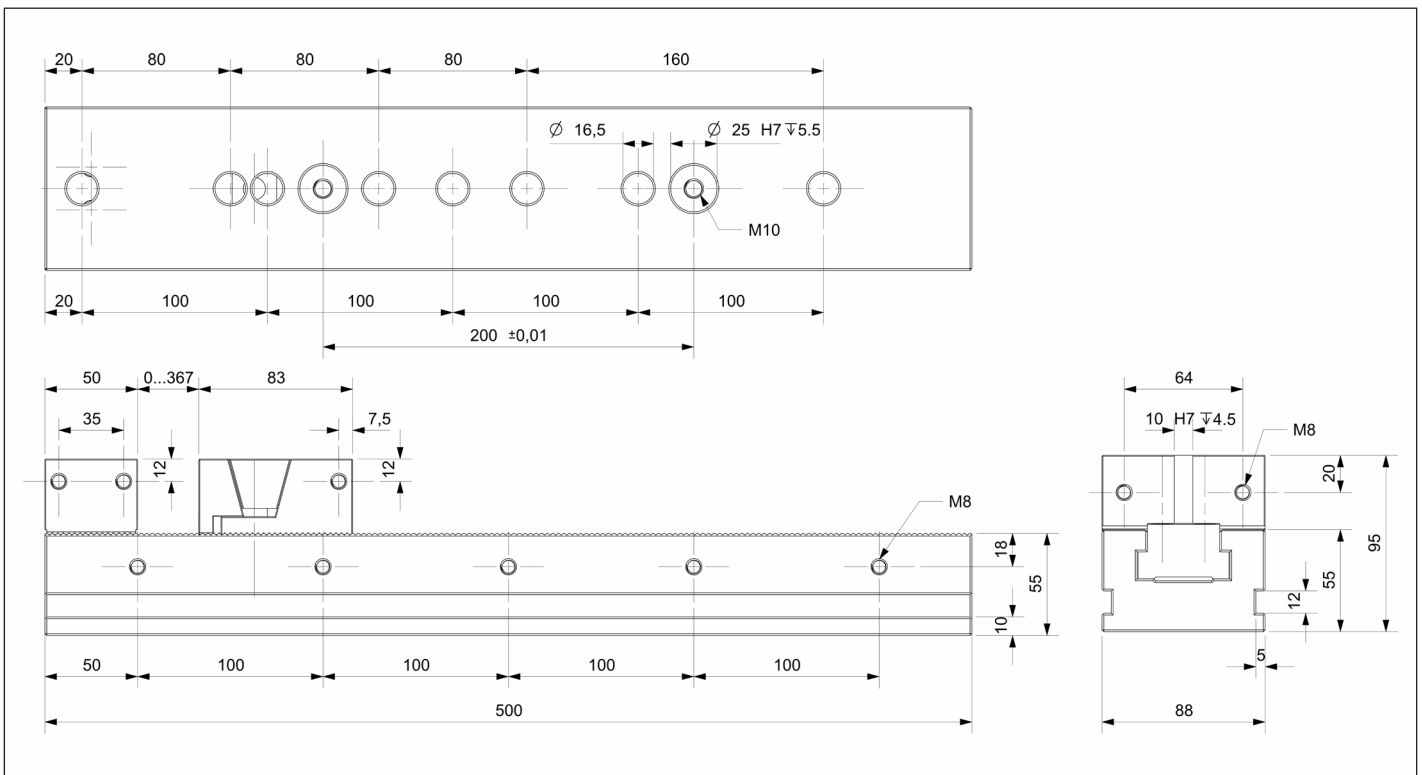
Clamping Rail

Without system jaws

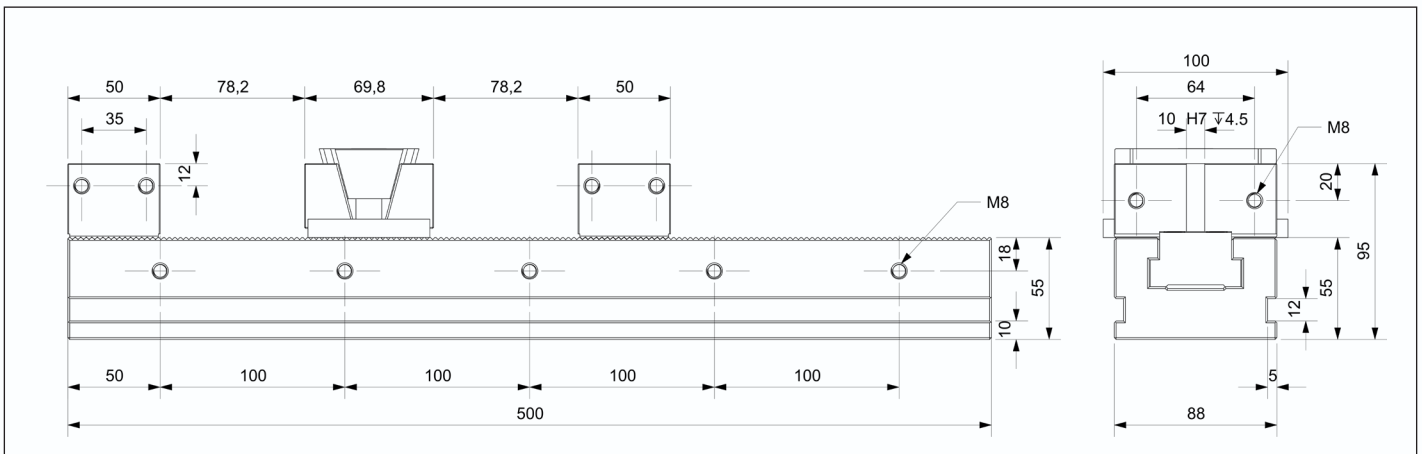
Scope of delivery
Clamping rail inclusive operating manual; without system jaws

Description	ID	Rail width [mm]	Clamping force [kN]	Max. torque [N.m]	Weight [kg]
KSD88-500	21520	88	35.6	80(FD)	17

KSD-88-500-FD TYPE



KSD-88-500-MD TYPE



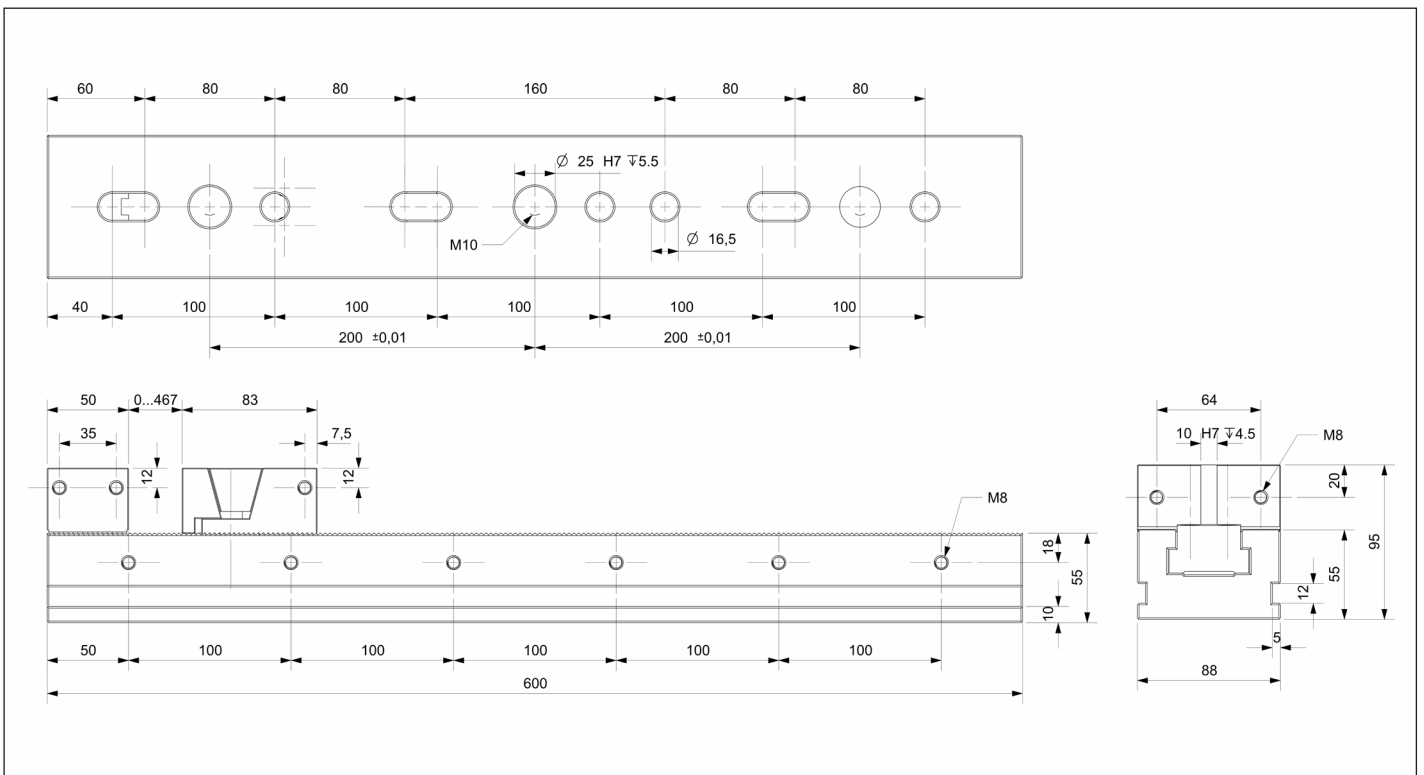
Clamping Rail

Without system jaws

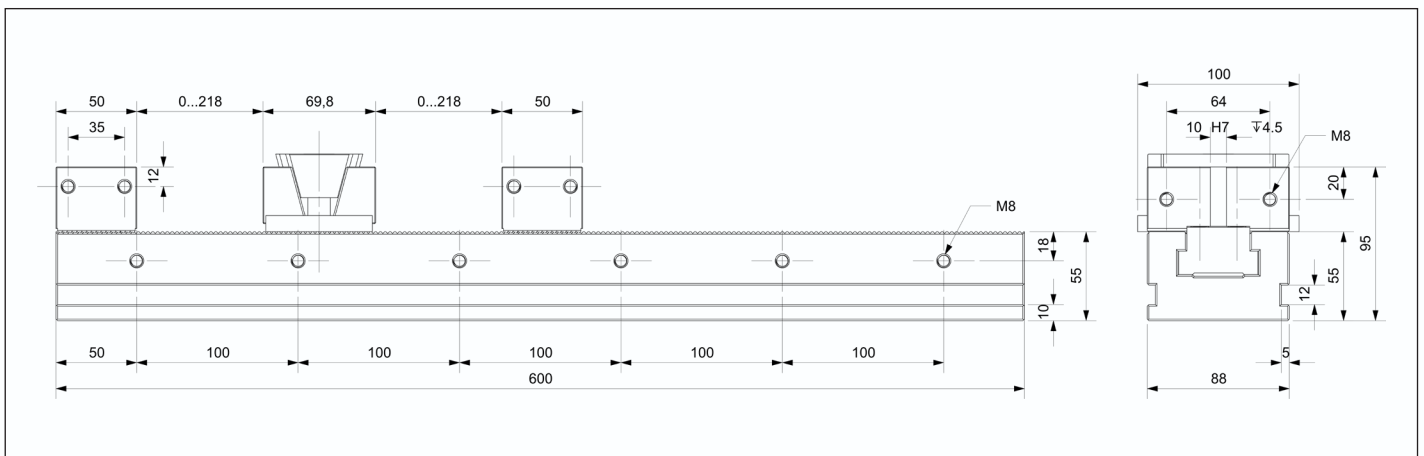
Scope of delivery
Clamping rail inclusive operating manual; without system jaws

Description	ID	Rail width [mm]	Clamping force [kN]	Max. torque [N.m]	Weight [kg]
KSD88-600	21530	88	35.6	80(FD)	19

KSD-88-600-FD TYPE



KSD-88-600-MD TYPE



Clamping Rail

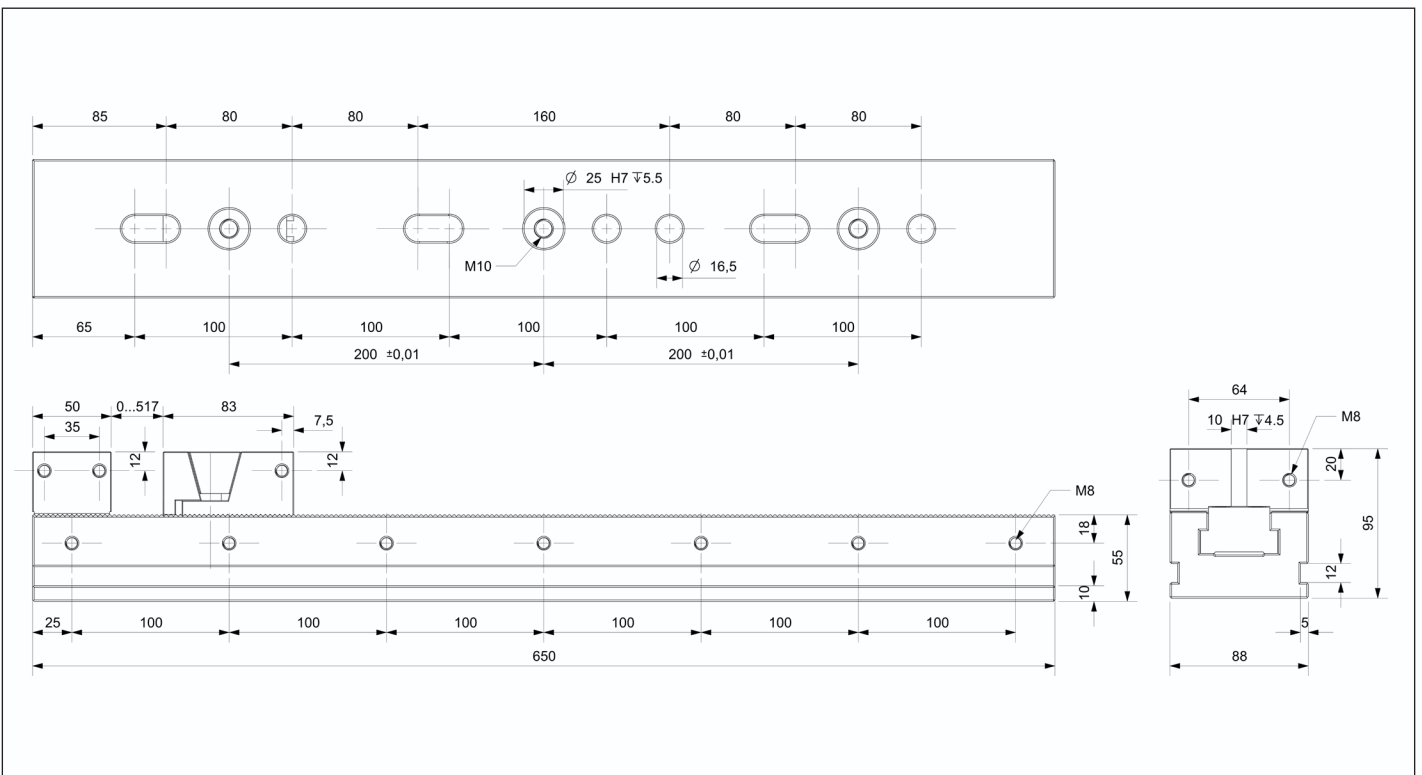
Without system jaws

Scope of delivery

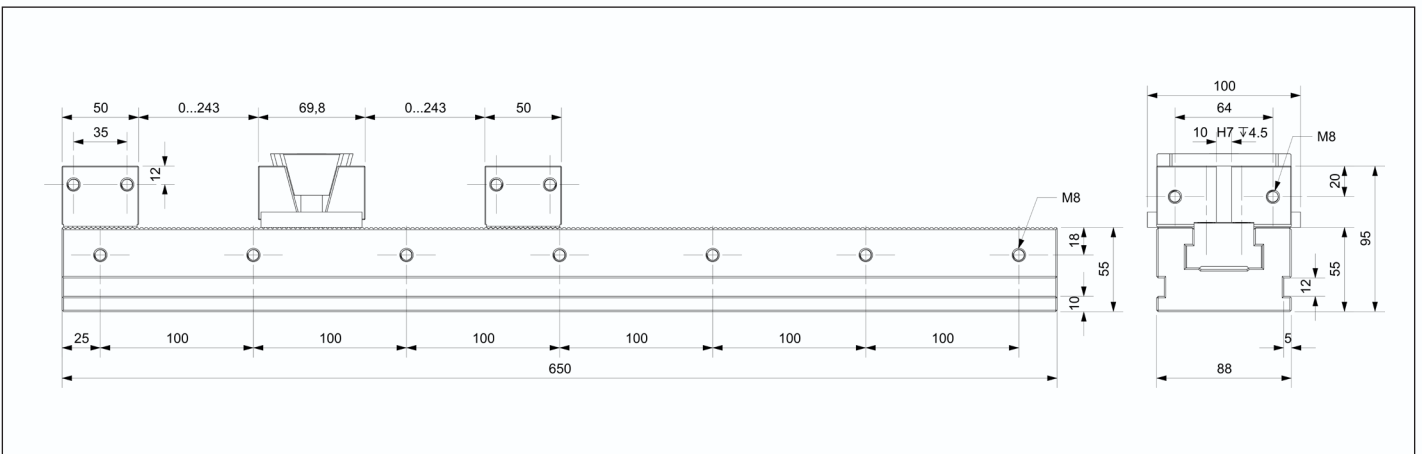
Clamping rail inclusive operating manual; without system jaws

Description	ID	Rail width [mm]	Clamping force [kN]	Max. torque [N.m]	Weight [kg]
KSD88-650	21540	88	35.6	80(FD)	21

KSD-88-650-FD TYPE



KSD-88-650-MD TYPE



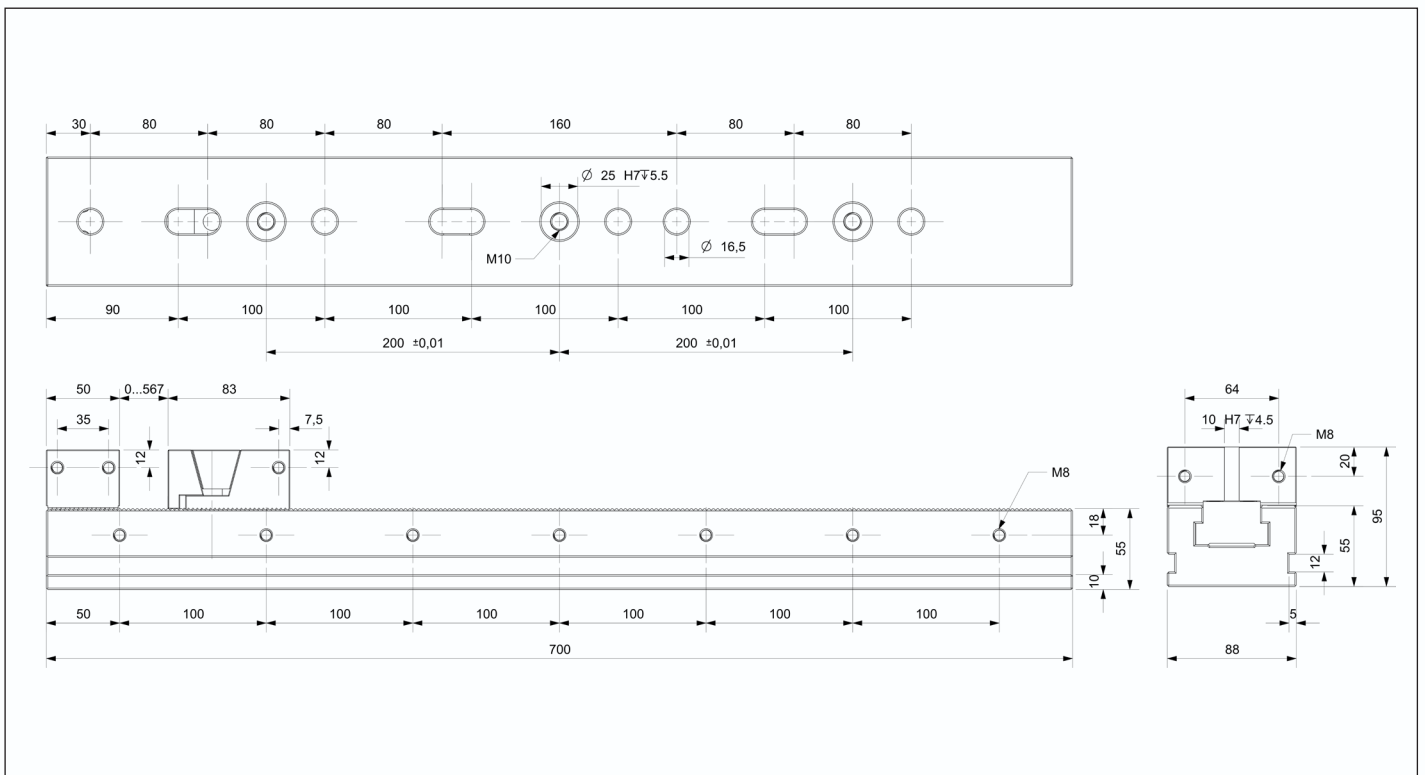
Clamping Rail

Without system jaws

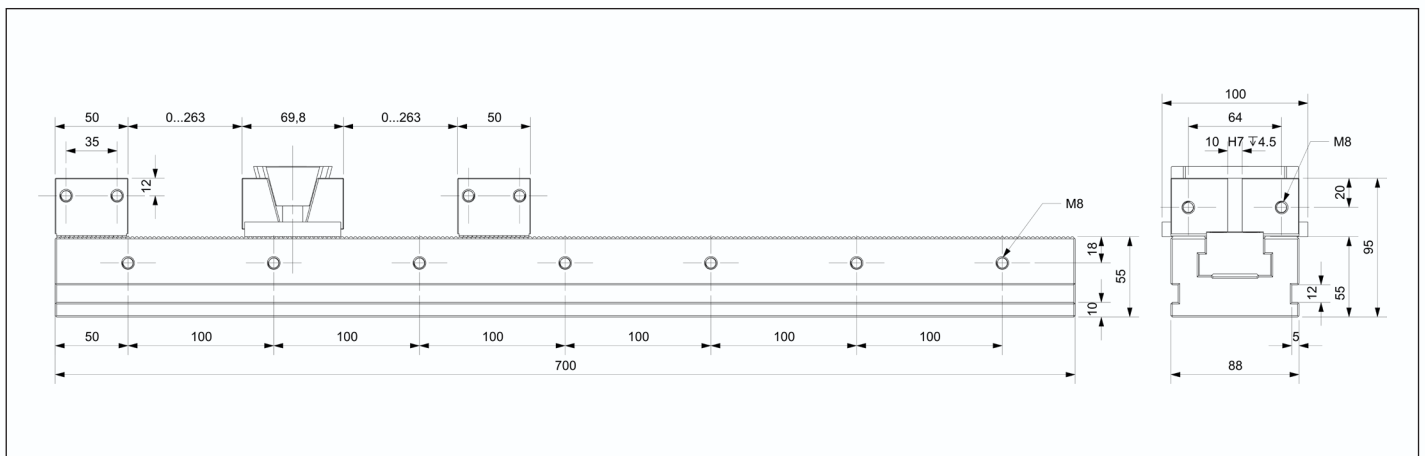
Scope of delivery
Clamping rail inclusive operating manual; without system jaws

Description	ID	Rail width [mm]	Clamping force [kN]	Max. torque [N.m]	Weight [kg]
KSD88-700	21550	88	35.6	80(FD)	22

KSD-88-700-FD TYPE



KSD-88-700-MD TYPE

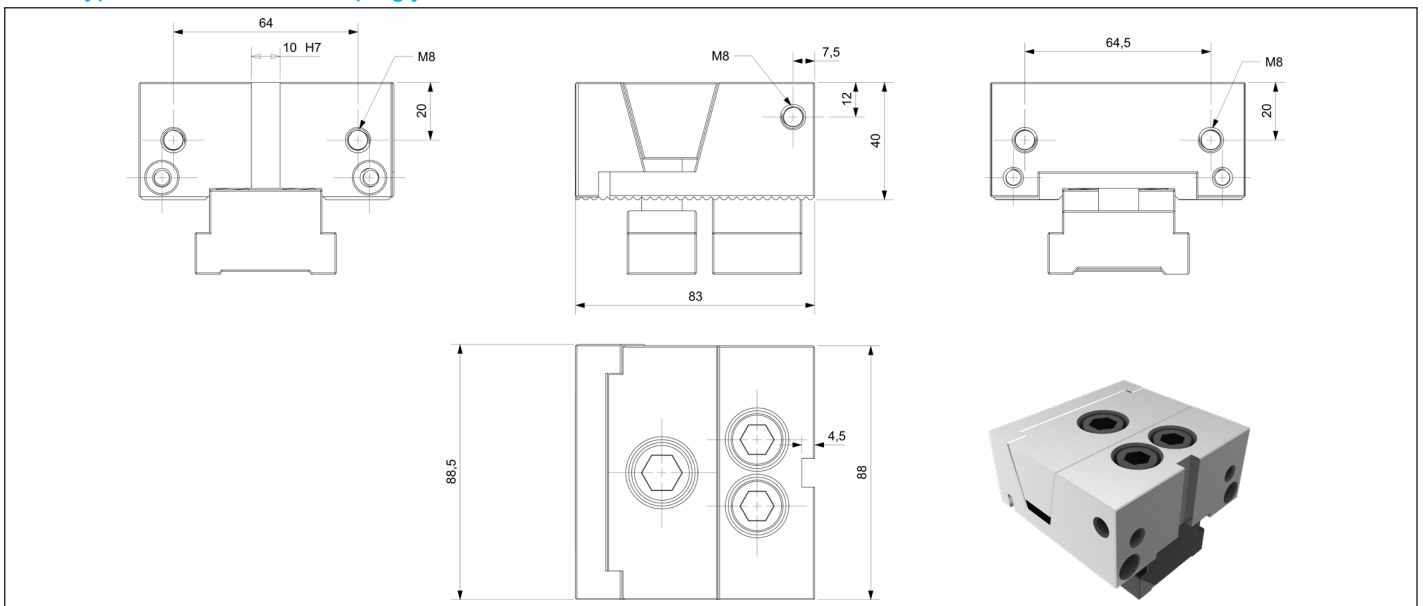


One-way Clamping Without Clamping Rail

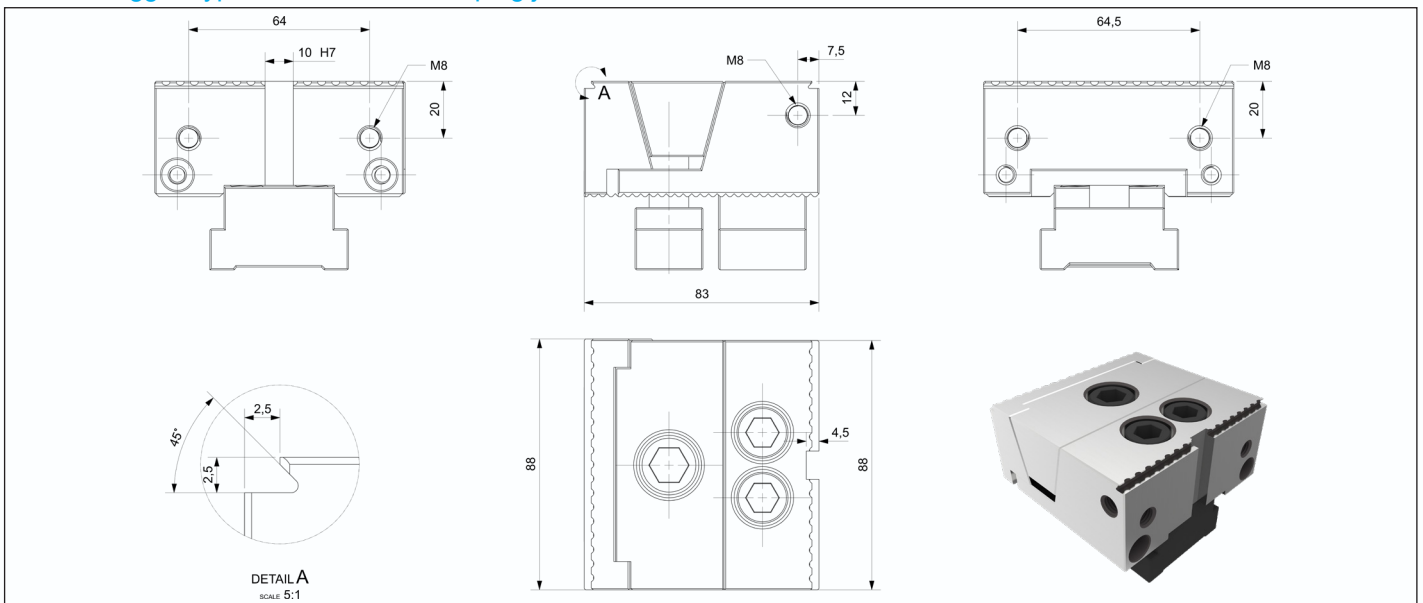
Scope of delivery
One-way Clamping inclusive operating manual; without Clamping Rail

Description	ID	Jaw width [mm]	Clamping force [kN]	Max. torque [N.m]	Weight [kg]
88FD	21600	50	35.6	80	2.5
88FD-T	21601	50	35.6	80	2.5

88FD type unidirectional clamping jaw



88FD-T Jagged type unidirectional clamping jaw

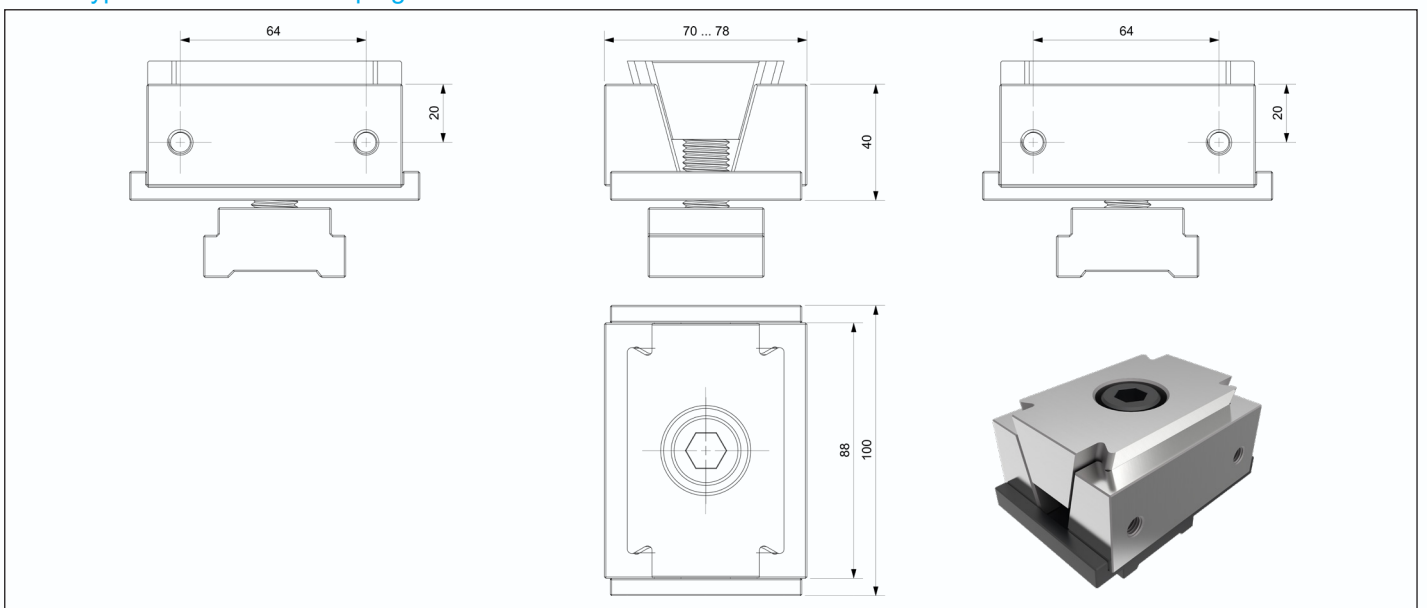


Two-way Clamping Without Clamping Rail

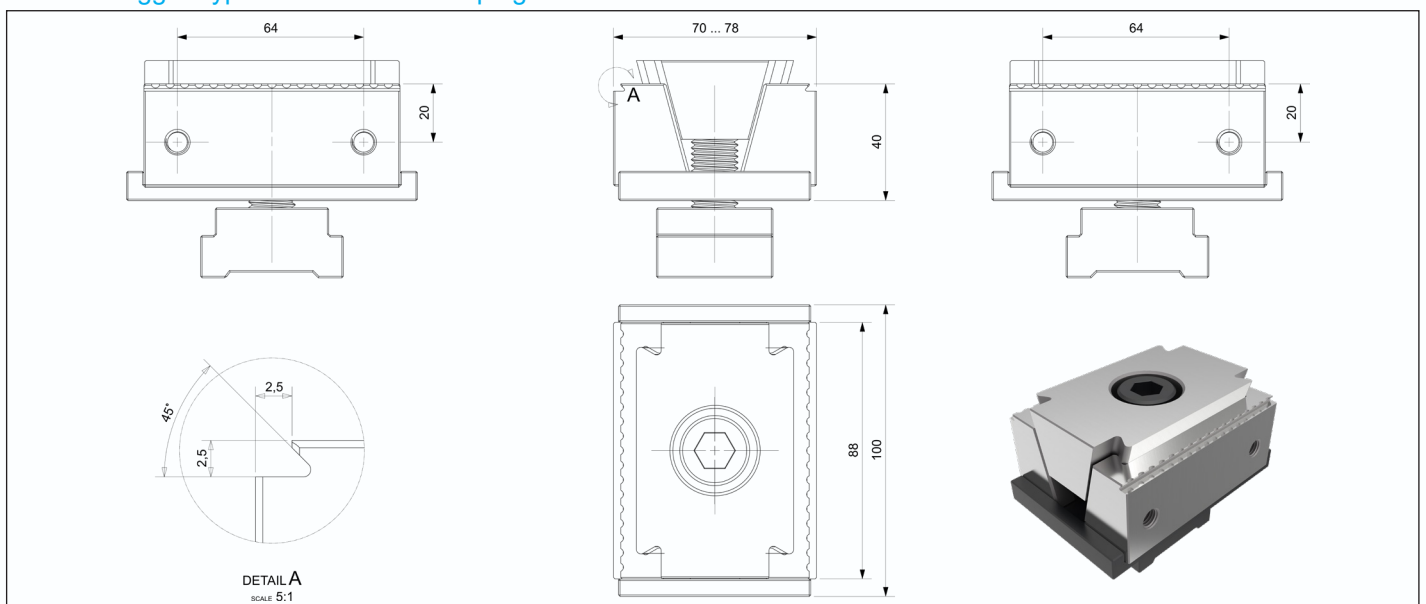
Scope of delivery
Two-way Clamping inclusive operating manual; without Clamping Rail

Description	ID	Jaw width [mm]	Clamping force [kN]	Max. torque [N.m]	Weight [kg]
88MD	21602	88	-	80	2.1
88MD-T	21603	88	-	80	2.1

88MD type Bidirectional Clamping Jaw



88MD-T Jagged type Bidirectional Clamping Jaw

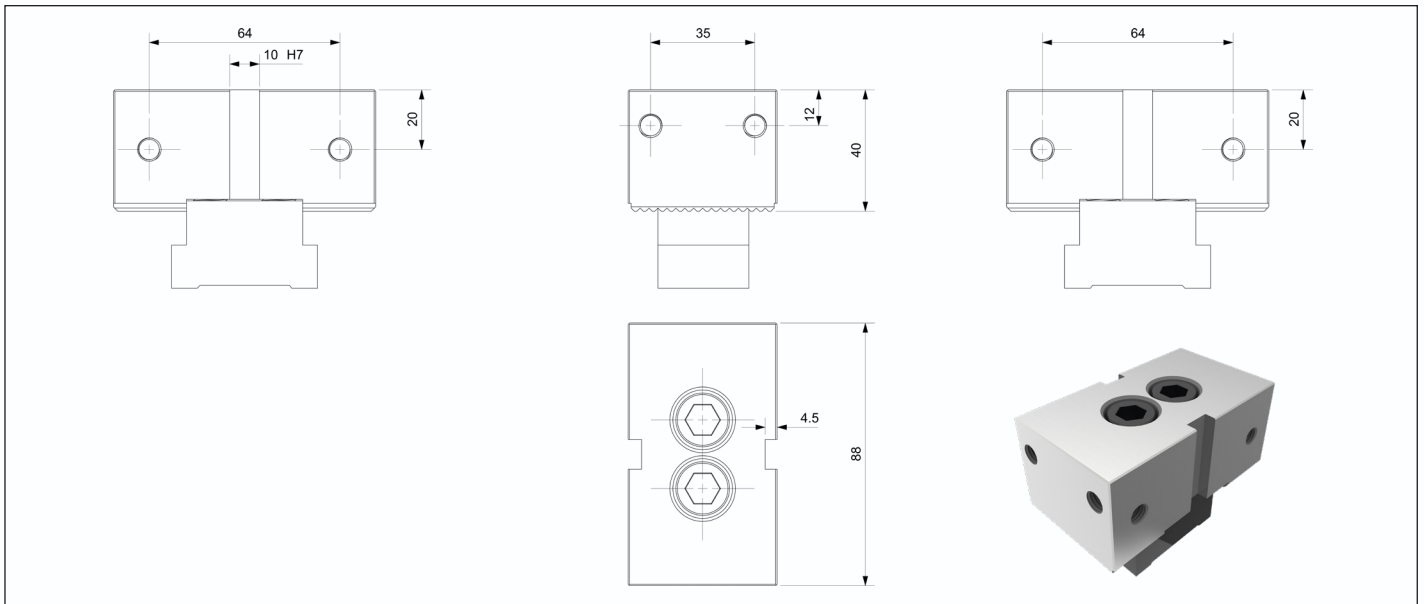


Fixed jaw Without Clamping Rail

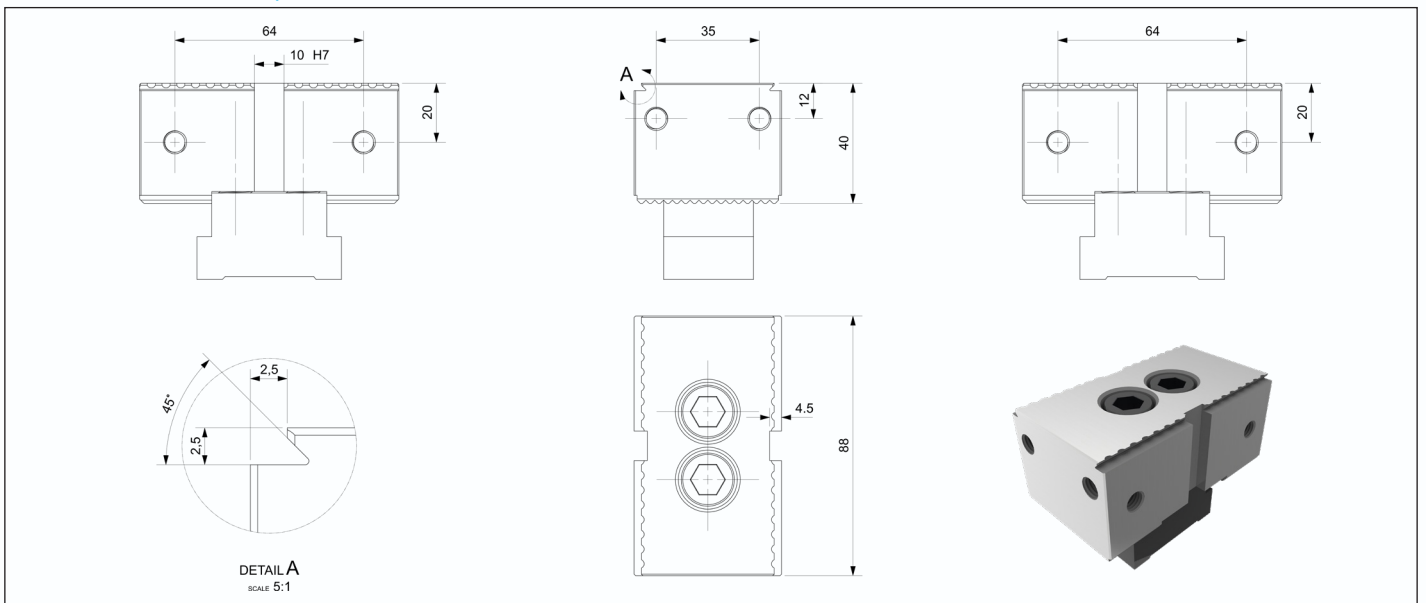
Scope of delivery
Fixed jaw inclusive operating manual; without Clamping Rail

Description	ID	Jaw width [mm]	Clamping force [kN]	Max. torque [N.m]	Weight [kg]
88G	21604	88	-	80	1.5
88G-T	21605	88	-	80	1.5

88G type unidirectional clamping jaw



88G-T 锯齿型固定钳口 | 88G-T



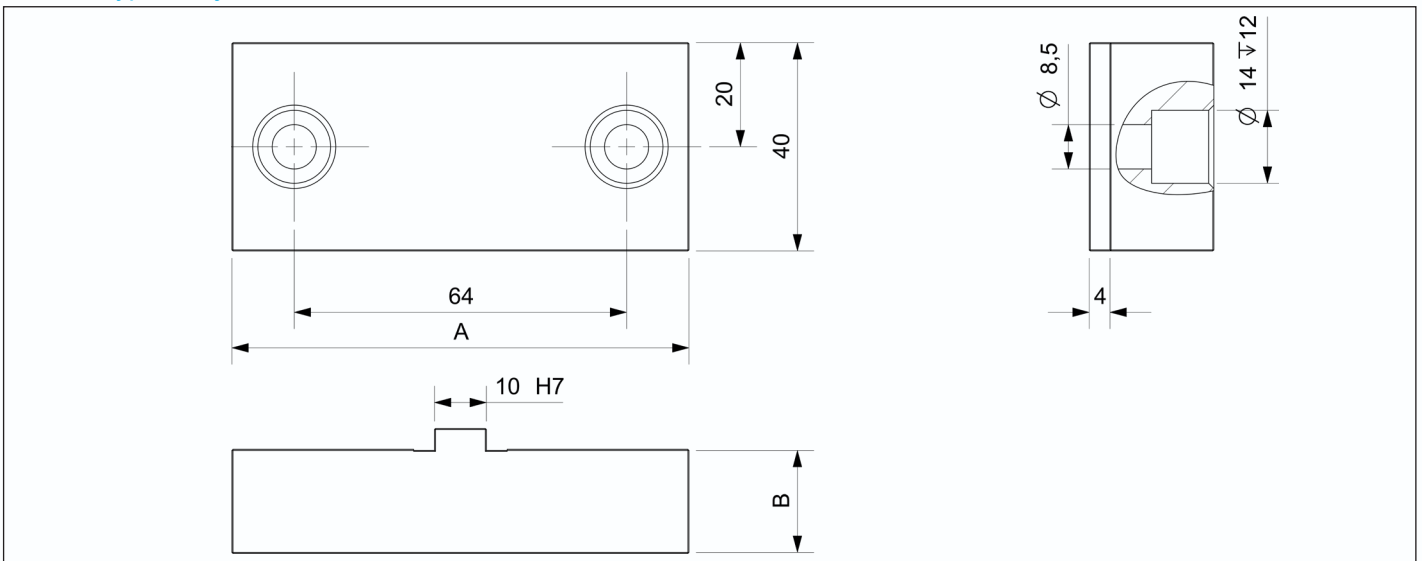
Soft claw

Customizable production

Material: S45C, hardenable | Aluminum 6061 Version: Fastening bores for screw DIN EN ISO 4762 Mounting: Via tongue and groove

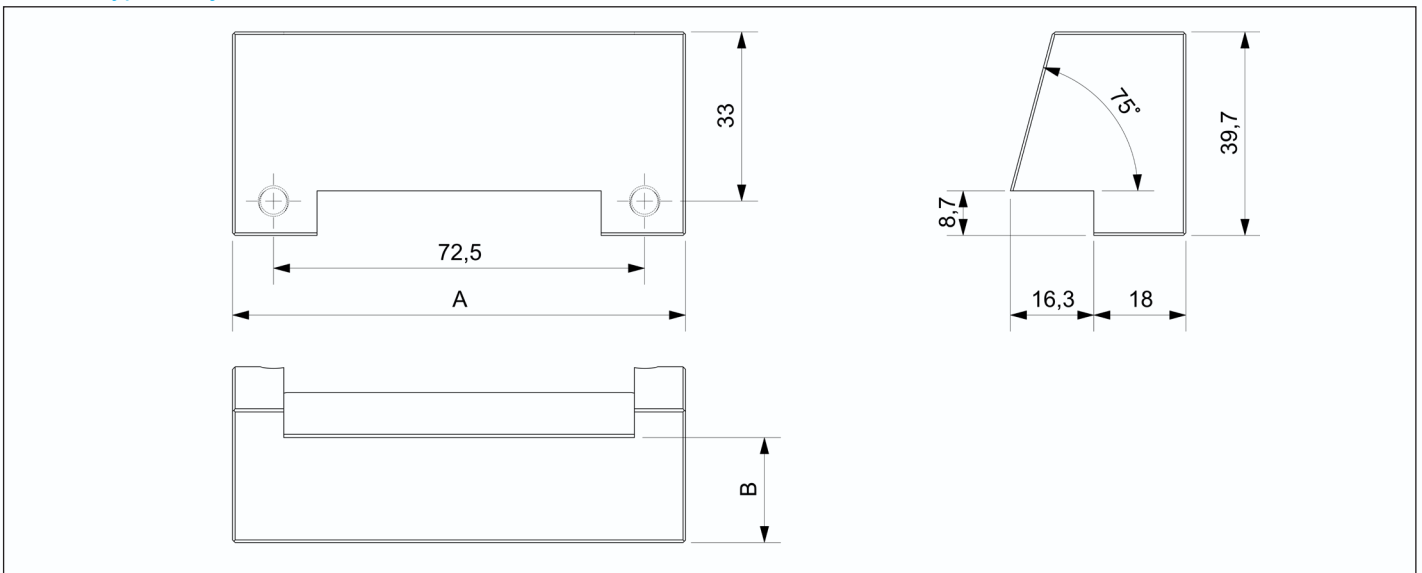
Description	ID	Jaw width A [mm]	Jaw high B [mm]	Weight [kg]
88RZ-B25-A	21610	88	25	0.9
88RZ-B30-A	21611	120	30	1.2

88RZ-A type soft jaw



Description	ID	Jaw width A [mm]	Jaw high B [mm]	Weight [kg]
88RZ-B25-C	21615	88	25	1.2
88RZ-B40-C	21616	120	40	1.9

88RZ-C type soft jaw



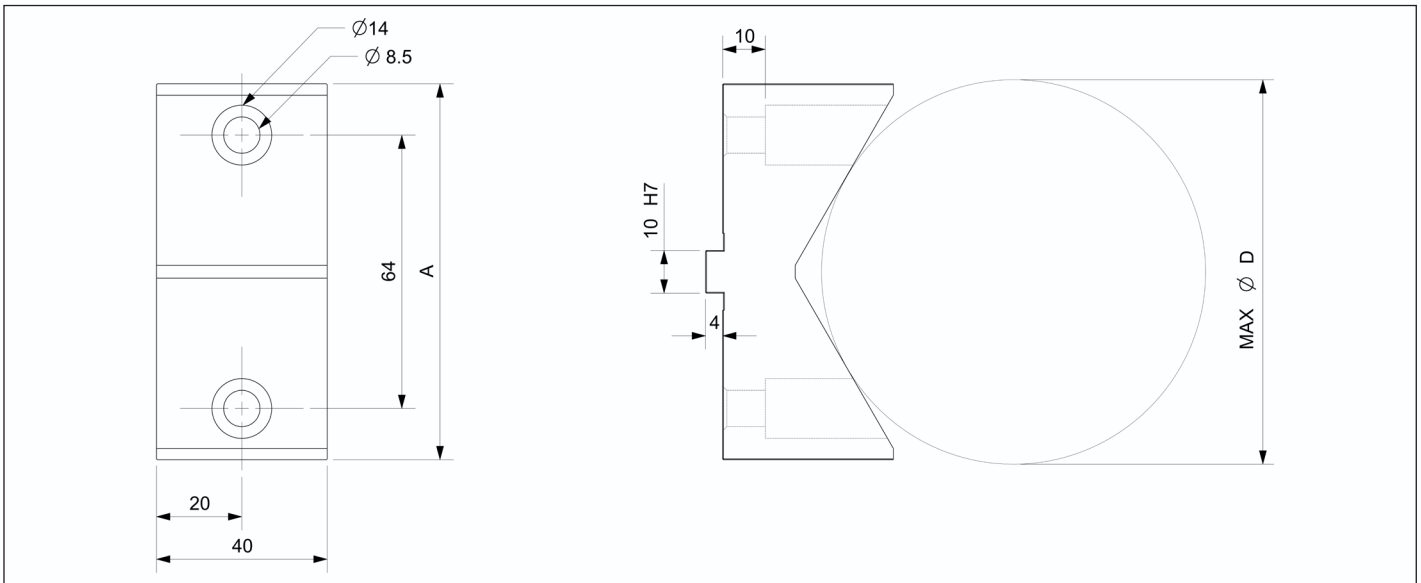
Soft claw

Customizable production

Material: S45C, hardenable | Aluminum 6061 Version: Fastening bores for screw DIN EN ISO 4762 Mounting: Via tongue and groove

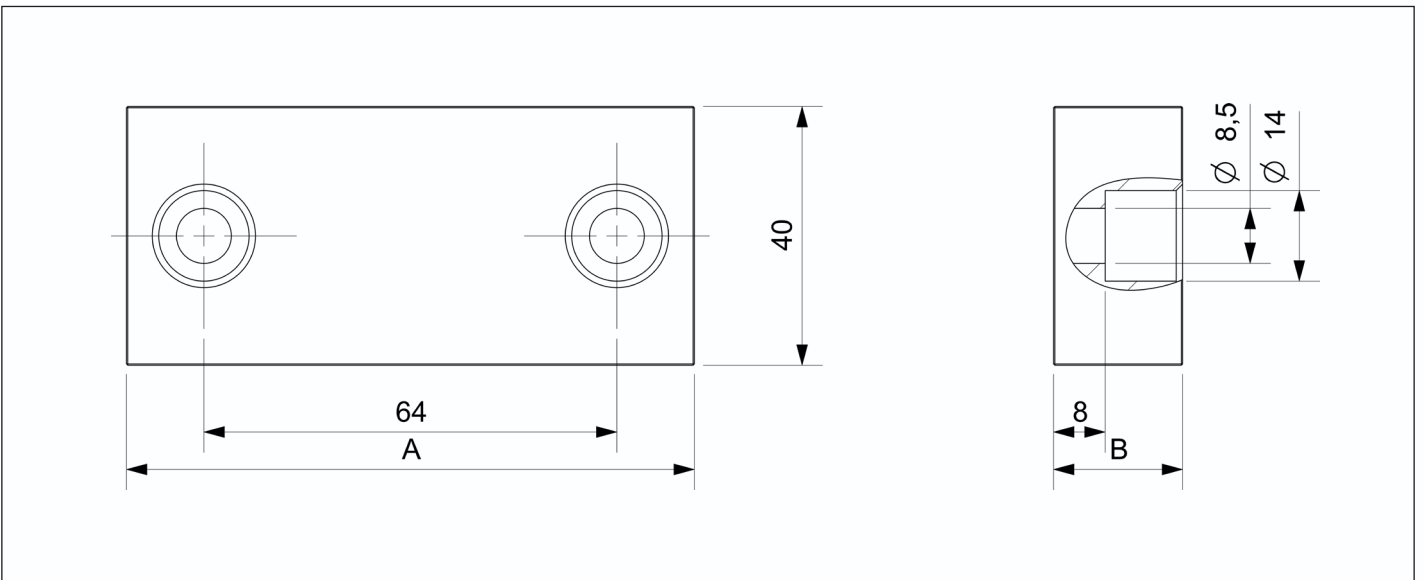
Description	ID	Jaw width [mm]	Clamping range [mm]	Weight [kg]
88RZ-V	21620	88	MAX Φ 120	0.8

88RZ-V type unidirectional clamping jaw



Description	ID	Jaw width A [mm]	Jaw high B [mm]	Weight [kg]
88RZ-B25-B	21625	88	25	0.9
88RZ-B30-B	21626	120	30	1.2

88RZ-B type soft jaw



Parallel gasket

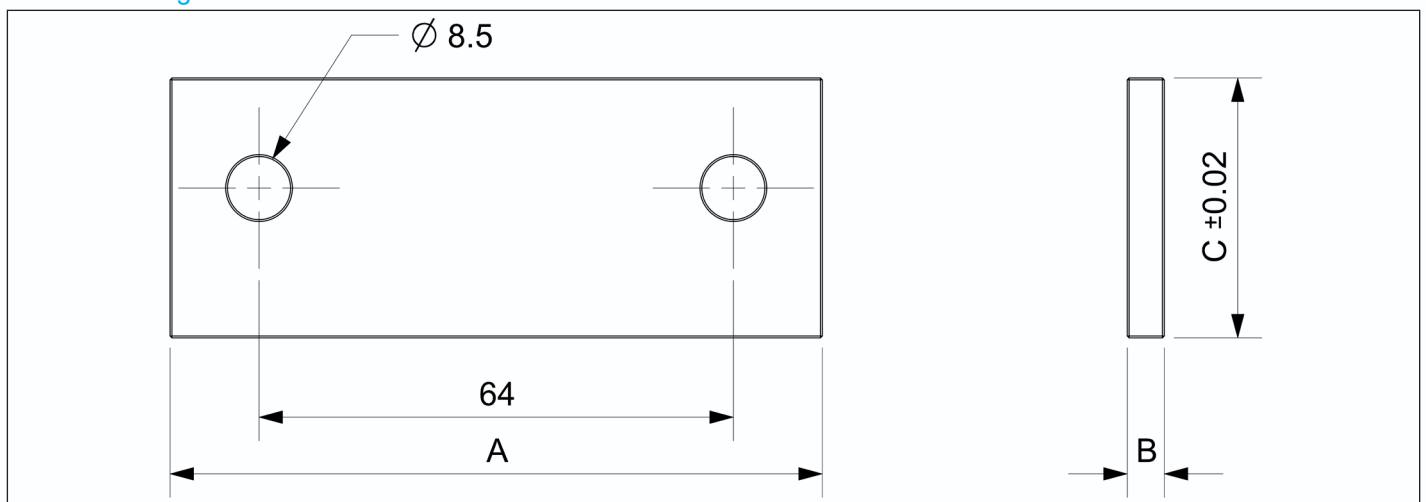
Customizable production

Material: 4140, HRC54-58

Version: Fastening bores for screw DIN EN ISO 4762 Mounting: Installation through mounting holes

Description	ID	Jaw width A	Jaw high B	Jaw high C	Weight
		[mm]	[mm]	[mm]	
88DP-530	21630	88	5	30	0.09
88DP-535	21631	88	5	35	0.10
88DP-337	21632	88	3	37	0.15

88DP Parallel gasket



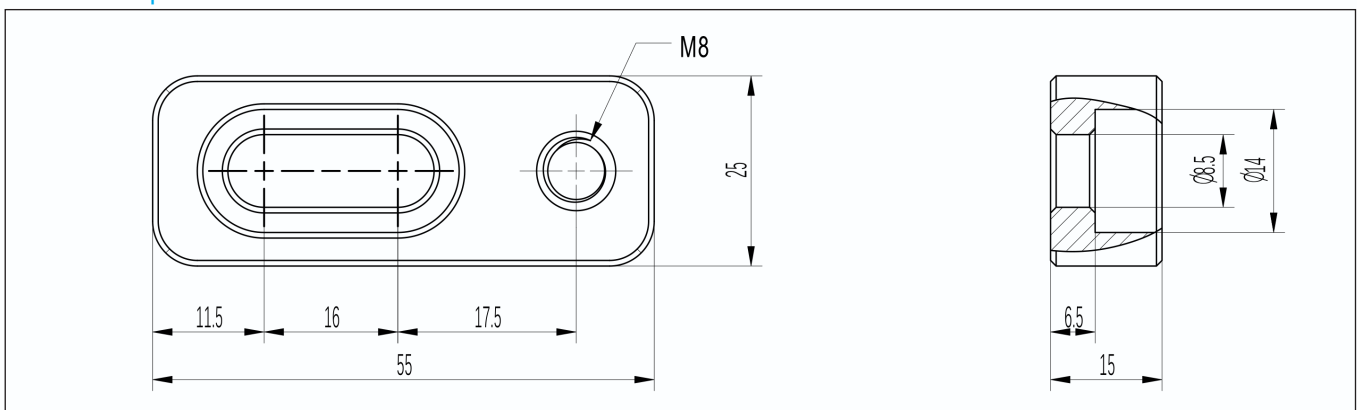
88DW work positioner

Instructions for use

Determine the position of the workpiece

Description	ID	Weight
		[kg]
88DW	21225	0.2

88DW work positioner



Serrated stationary wedge

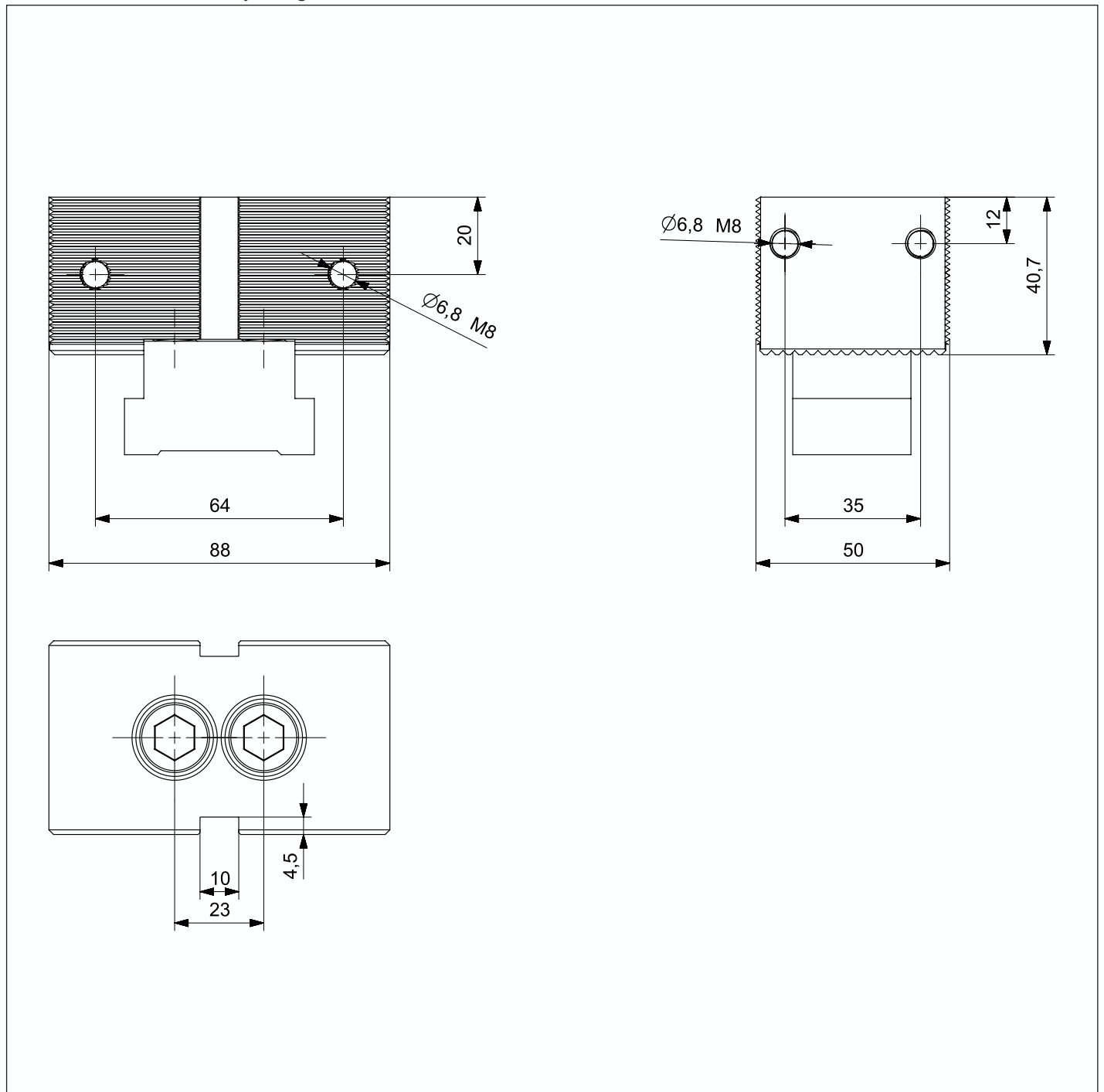
Customizable production

Material:

Version: Fastening bores for screw DIN EN ISO 4762 Mounting: Via tongue and groove

Description	ID	Jaw width A [mm]	Jaw high B [mm]	Weight [kg]
88G-MT	21650	88	50	1.8

88G-MT Serrated stationary wedge



Serrated Jaw

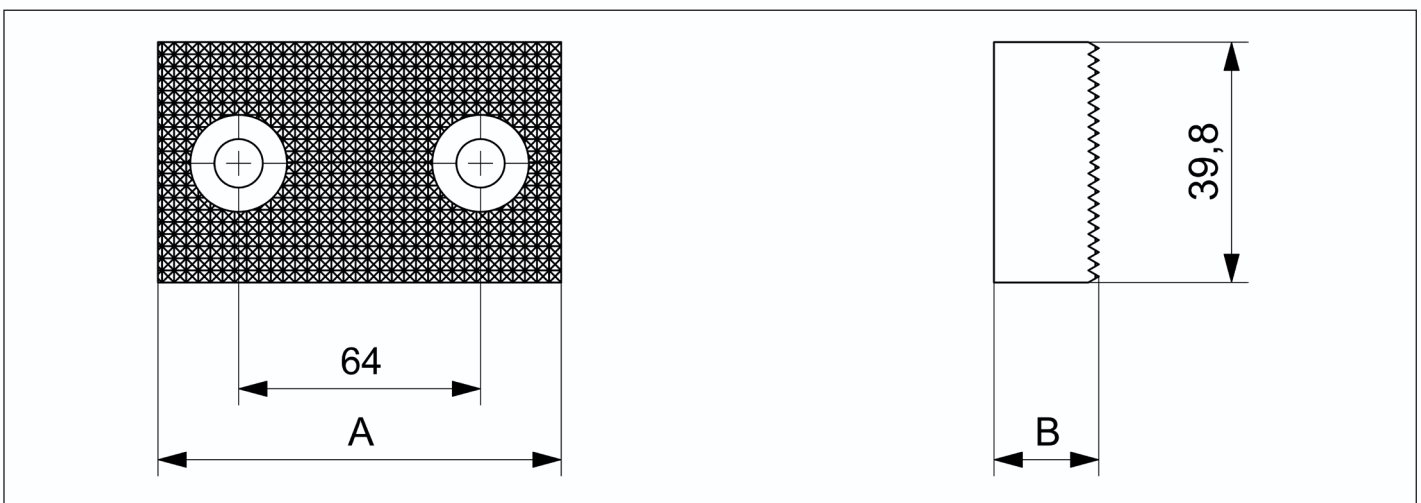
Customizable production

Material: 4140, HRC48-52

Version: Fastening bores for screw DIN EN ISO 4762 Mounting: Installation through mounting holes

Description	ID	Jaw width A [mm]	Jaw high B [mm]	Jaw high C [mm]	Weight [kg]
88C-8815	21660	88	15	40	0.6
88C-8820	21662	88	20	42	0.8
88C-10020	21664	100	20	45	1.0

88C serrated Jaw



Description	ID	Jaw width A [mm]	Jaw high B [mm]	Jaw high C [mm]	Jaw high D [mm]	Weight [kg]
88C-8815T	21661	88	15	40	5	0.6
88C-8820T	21663	88	20	42	5	0.8
88C-10020T	21665	100	20	45	5	1.0

88C-T serrated step Jaw

