



workraster - the structured one





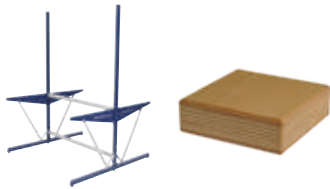
workraster and linkage

Page 319



workraster Combinations from practice

Page 324



workraster Basic modules and worktops

Page 326



workraster Accessories

Page 328





workraster - the structured one

The **workraster** is the "entry-level model" among our ergonomic workplace systems. Thanks to a structured grid arrangement of 38 mm, the work bench can be individually set to your required height and is therefore suitable for both sitting and standing activities. In particular due to the linkage with roller and small roller conveyors, this system is ideal for a smooth production flow. Thanks to its remarkable flexibility in terms of form, additional modules can be added to the basic work benches at any time. Double-sided workstations are also no problem. With a load capacity of 300 kg with an even load, it is ideal for the assembly of small to medium-sized parts.



Please note that workraster tables are delivered unassembled. Easy self-assembly!



Our features at a glance

Basic module models	Single or double for double-sided workplace design
Modular system	Basic modules are connected to each other by means of cross-members - no need for add-on modules
Retrofittable	Extension of existing workstations, inline and corner combinations possible
Energy	Direct supply of lighting, energy, compressed air
Frame widths	1000, 1500 mm
Frame depths	500, 800, 960, 1460 mm
Frame heights	1348, 2070 mm
Work height without worktop	715 – 1057 mm with adjustable support Recommended: 829 mm
Height adjustment	Height grid arrangement of 38 mm
Frame design	L-foot
Load capacity	300 kg with even load

FRAME DESIGN:



Single-sided



Double-sided



HEIGHT ADJUSTMENT:



Grid adjustment





The linkage concept optimises productivity thanks to the arrangement of workstations according to the work sequence

Production - Assembly - Inspection - Packaging. Intermediate transport is avoided, distances are reduced and the working cycle is increased.

The workraster system is among the most efficient systems on the market. Due to the use of standard modules, workstations are interlinked, thus optimising the production flow.

All modules are height-adjustable!

Transport path

The workpiece carriers are transported on the roller conveyors. The path is created by a string of modules.

Linking workstations

The assembly line starts with a basic table with a roller or small roller conveyor. The consecutive conveyors are supplemented by add-on tables or interim connections (labelled as ZM). A basic table with a roller ball or small roller conveyor follows each roller ball/intersecting bridge.

Linking

The workstations are connected using connection, linear or corner modules. Module lengths: 1000 and 1500 mm.

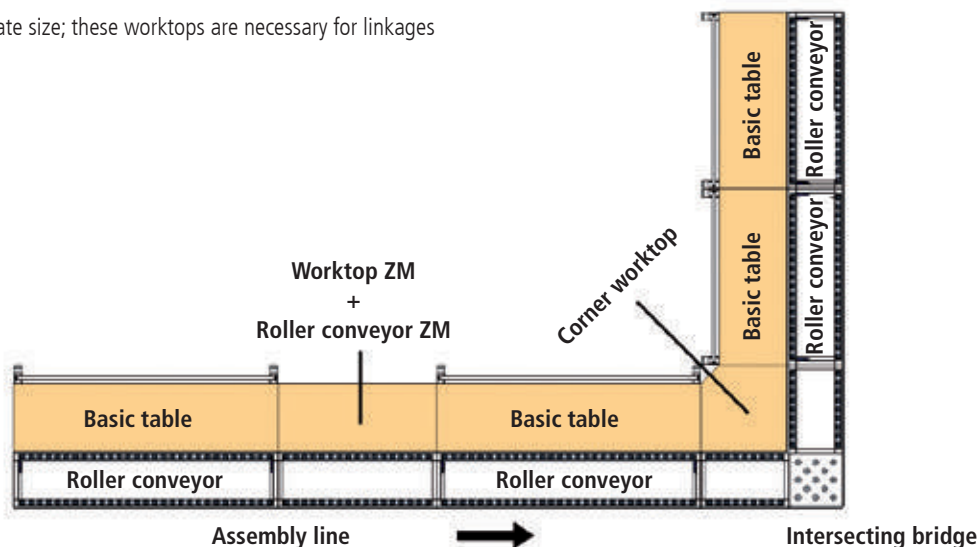
Workstations

The workstations are generally basic tables. With **workline**, they can either feature a roller ball board (for directly passing on the workpiece) or a worktop. With **workraster**, the worktop is combined with the conveyor.

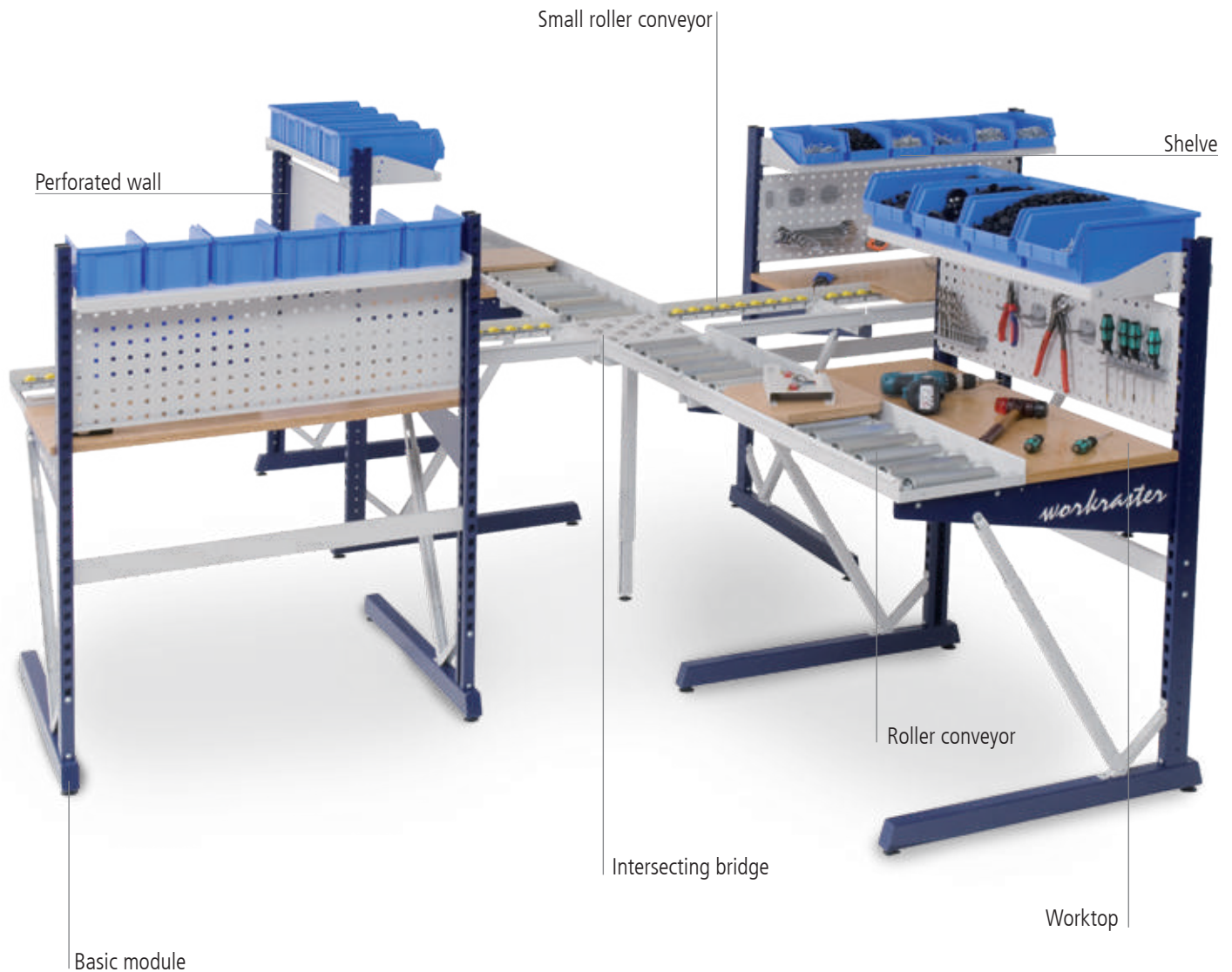
Change of direction

The direction of the workpiece carriers is changed by means of roller ball/intersecting bridge.

ZM = intermediate size; these worktops are necessary for linkages

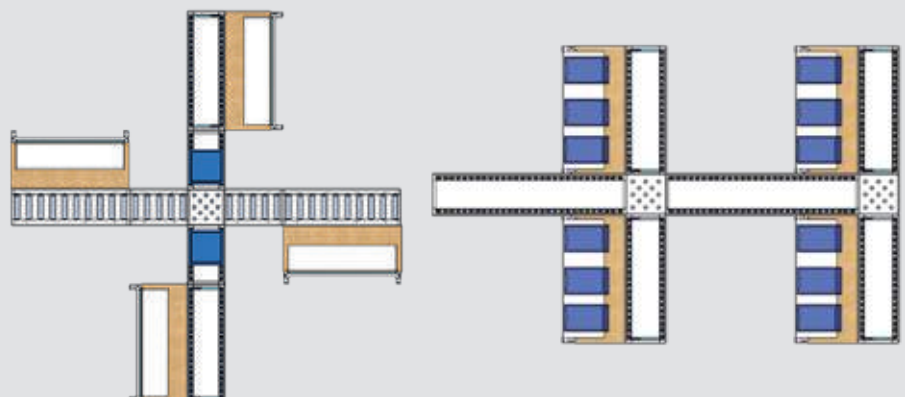


Cross combination

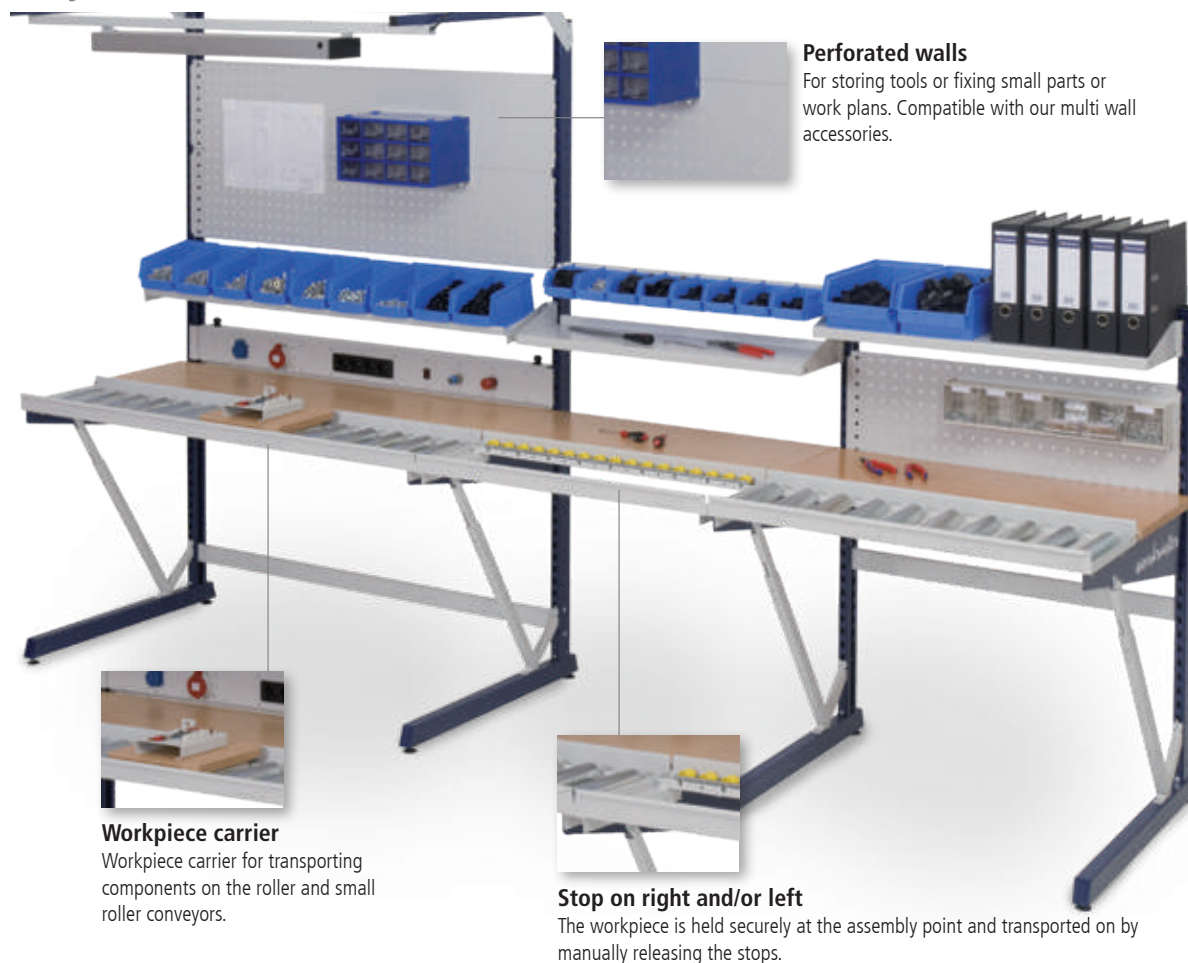


Cross combination

The basic modules are arranged according to the intended application. The various components can be individually combined, linked and arranged in a simple modular system. Working height and handling areas are adapted on site.



Assembly line



Arrangement variant Double basic module



Corner combination



Shelves, adjustable incline

The shelves have a raised edge and are simply suspended in the perforated holes in the support columns. Their height and incline can be adjusted. Incline: 0°, 10°, 20°.

Hanging drawer

Lockable drawer with front height of 100 mm. It is secured under the worktop.

Module arrangement



PC support A

Is screwed onto the support column of the **workraster** basic module from the inside or outside. Special bracket on the base frame for Construction.

- Figure: RAL 5013 Cobalt blue/RAL 7035 Light grey
- Height grid arrangement of 38 mm, individually height-adjustable, therefore ideal for standing and sitting activities
- Modular system: Diverse combination options, including for retrofitting
- The load capacity of the individual basic modules is up to 300 kg with an even load
- Load capacity of the drawer 35 kg
- Direct supply of lighting; electricity and compressed air supplied via energy ducts
- Beech multiplex worktop, 1500 x 750 x 25 mm



workraster with multi-board setup

- 1x overhead frame
- 1x equipment rail
- 1 x LED illumination 28.9 W, 1290 lx

Item no.	Dimensions in mm (WxDxH)
07.899.00	1500 x 800 x 2070



workraster with multi-board setup

- 1x energy bar with 4x earthed sockets
- 2x perforated wall
- 1x shelf, 320 mm
- 1x overhead frame
- 1x equipment rail
- 1 x LED illumination 28.9 W, 1290 lx

Item no.	Dimensions in mm (WxDxH)
07.899.01	1500 x 800 x 2070



workraster with multi-board setup

- 3x perforated wall
- 1x energy bar with 4x earthed sockets and 2x compressed air 1/4"
- 1x overhead frame
- 1x equipment rail
- 1 x LED illumination 28.9 W, 1290 lx
- 1x drawer, 100 mm

Item no.	Dimensions in mm (WxDxH)
07.899.04	1500 x 800 x 2070



workraster with multi-board setup

- 2x perforated wall
- 1x shelf, 320 mm
- 1x energy bar with 2x 4x earthed sockets and 1x compressed air 1/4"
- 1x overhead frame
- 1x equipment rail
- 1 x LED illumination 28.9 W, 1290 lx
- 1x drawer, 100 mm

Item no.	Dimensions in mm (WxDxH)
07.899.05	1500 x 800 x 2070

Supplied without boxes, hooks and tools

WR
EKkg
300**workraster with multi-board setup**

- 2x shelf, 220 mm
- 2x shelf, 320 mm
- 1x overhead frame
- 1x equipment rail
- 1 x LED illumination 28.9 W, 1290 lx
- 1x drawer, 100 mm

Item no.	Dimensions in mm (WxDxH)
07.899.02	1500 x 800 x 2070

**workraster with multi-board setup**

- 2x perforated wall
- 2x shelf, 320 mm
- 1x overhead frame
- 1x equipment rail
- 1 x LED illumination 28.9 W, 1290 lx

Item no.	Dimensions in mm (WxDxH)
07.899.06	1500 x 800 x 2070

**workraster with multi-board setup**

- 1x magnetic wall
- 2x shelf, 220 mm
- 1x energy bar with 2x earthed socket and 2x compressed air 1/4"
- 1x overhead frame
- 1x equipment rail
- 1 x LED illumination 28.9 W, 1290 lx
- 1x drawer, 100 mm

Item no.	Dimensions in mm (WxDxH)
07.899.03	1500 x 800 x 2070

**workraster with multi-board setup**

- 3x shelf, 220, 320 and 420 mm
- 1x energy bar with 2x earthed socket and 1x compressed air 1/4"
- 1x overhead frame
- 1x equipment rail
- 1 x LED illumination 28.9 W, 1290 lx
- 1x drawer, 100 mm

Item no.	Dimensions in mm (WxDxH)
07.899.07	1500 x 800 x 2070

Supplied without boxes, hooks and tools

Basic modules for individual arrangement



Single-sided basic module

- 2x base frame each
- Support columns
- Cross-members, junction plates, supports and worktop carriers
- For worktops with 750 mm depth

Item no.	Dimensions in mm (WxDxH)
07.8410.811	1000 x 800 x 1348
07.8410.821	1000 x 800 x 2070
07.8415.811	1500 x 800 x 1348
07.8415.821	1500 x 800 x 2070



Single-sided basic module, short

- 2x base frame each
- Support columns
- Cross-members, junction plates, supports and worktop carriers
- For worktops with 600 mm depth

Item no.	Dimensions in mm (WxDxH)
07.8410.511	1000 x 550 x 1348
07.8410.521	1000 x 550 x 2070
07.8415.511	1500 x 550 x 1348
07.8415.521	1500 x 550 x 2070



Double-sided basic module

- 2x base frame each
- Support columns
- Cross-members, Junction plates, supports and worktop carriers
- For worktops with 750 mm depth

Item no.	Dimensions in mm (WxDxH)
07.8410.112	1000 x 1460 x 1348
07.8410.122	1000 x 1460 x 2070
07.8415.112	1500 x 1460 x 1348
07.8415.122	1500 x 1460 x 2070



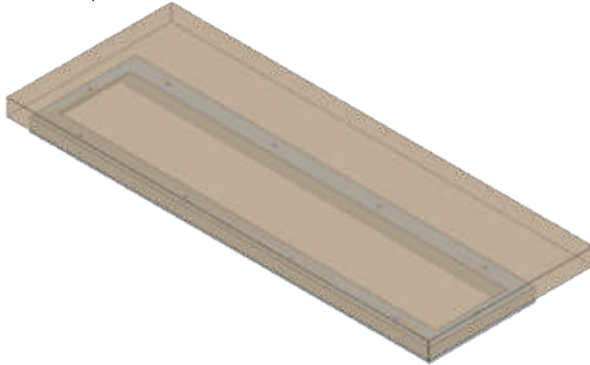
Double-sided basic module, short

- 2x base frame each
- Support columns
- Cross-members, Junction plates, supports and worktop carriers
- For worktops with 600 mm depth

Item no.	Dimensions in mm (WxDxH)
07.8410.912	1000 x 960 x 1348
07.8410.922	1000 x 960 x 2070
07.8415.912	1500 x 960 x 1348
07.8415.922	1500 x 960 x 2070

25 mm worktops

- Worktops with worktop frame for attachment to the basic module, incl. worktop frame



Beech multiplex

- Waterproof
- Dampened according to DIN 68705

Panel thickness	25 mm	40 mm
Dimensions in mm (WxD)	Item no.	Item no.
1500 x 600	07.8115.62	07.8115.64
1400 x 600 ZM*	07.8114.62	07.8114.64
1000 x 600	07.8110.62	07.8110.64
900 x 600 ZM*	07.8109.62	07.8109.64
1500 x 750	07.8115.72	07.8115.74
1400 x 750 ZM*	07.8114.72	07.8114.74
1000 x 750	07.8110.72	07.8110.74
900 x 750 ZM*	07.8109.72	07.8109.74



MDF worktop with 0.7 mm HPL coat

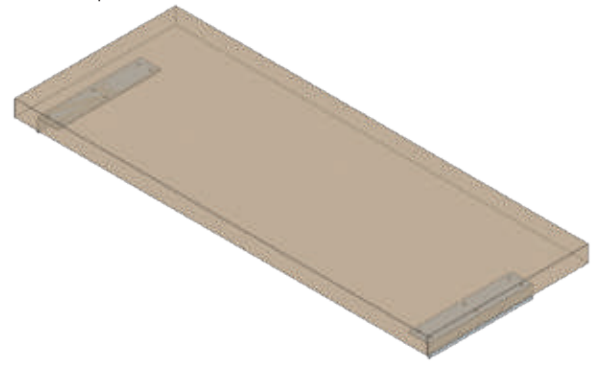
- With 0.7 mm HPL coat
- Highly abrasion-resistant
- 4-sided, ABS edging

Panel thickness	30 mm	40 mm
Dimensions in mm (WxD)	Item no.	Item no.
1500 x 600	07.8115.62H	07.8115.64H
1400 x 600 ZM*	07.8114.62H	07.8114.64H
1000 x 600	07.8110.62H	07.8110.64H
900 x 600 ZM*	07.8109.62H	07.8109.64H
1500 x 750	07.8115.72H	07.8115.74H
1400 x 750 ZM*	07.8114.72H	07.8114.74H
1000 x 750	07.8110.72H	07.8110.74H
900 x 750 ZM*	07.8109.72H	07.8109.74H

Other versions on request

40 mm worktops

- Worktops with worktop bracket for attachment to the basic module, incl. worktop bracket



Chipboard panel directly coated with melamine resin

- 4-sided, ABS edging
- Chipboard carrier panel with laminate coating
- Abrasion-resistant and easy to care for surface

Panel thickness	28 mm	40 mm
Dimensions in mm (WxD)	Item no.	Item no.
1500 x 600	07.8115.62M	07.8115.64M
1400 x 600 ZM*	07.8114.62M	07.8114.64M
1000 x 600	07.8110.62M	07.8110.64M
900 x 600 ZM*	07.8109.62M	07.8109.64M
1500 x 750	07.8115.72M	07.8115.74M
1400 x 750 ZM*	07.8114.72M	07.8114.74M
1000 x 750	07.8110.72M	07.8110.74M
900 x 750 ZM*	07.8109.72M	07.8109.74M



ESD conductive workbench top

- Suitable for all electrostatically sensitive areas
- Surface RAL 7035

Panel thickness	30 mm	40 mm
Dimensions in mm (WxD)	Item no.	Item no.
1500 x 600	07.8115.62E	07.8115.64E
1400 x 600 ZM*	07.8114.62E	07.8114.64E
1000 x 600	07.8110.62E	07.8110.64E
900 x 600 ZM*	07.8109.62E	07.8109.64E
1500 x 750	07.8115.72E	07.8115.74E
1400 x 750 ZM*	07.8114.72E	07.8114.74E
1000 x 750	07.8110.72E	07.8110.74E
900 x 750 ZM*	07.8109.72E	07.8109.74E

***ZM** = intermediate size. These worktops are necessary for linkages.
e.g. 2x basic table and 1x ZM, 3x basic table and 2x ZM

You can find further accessories on/from page 236



Intersecting bridge

- Includes 4 end stops

Item no.	Length in mm
07.8830.300	300 x 300
07.8840.400	400 x 400
07.8830.400	300 x 400



Support foot

- Height-adjustable

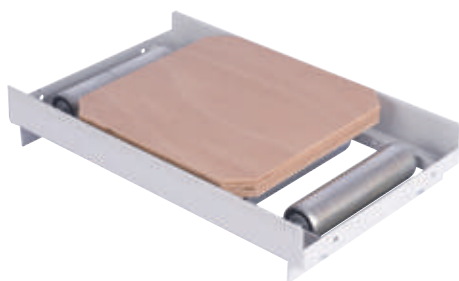
Item no.	Dimensions in mm (WxDxH)	Design
07.89.42	550 x 1348	Left
07.89.45		Right



Corner panel support

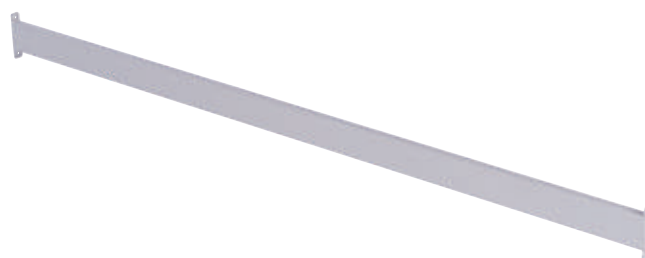
- Height-adjustable

Item no.	Dimensions in mm (WxDxH)
07.89.10	150 x 150 x 655 – 1150



Workpiece carrier for transporting components on the roller and small roller conveyors

Item no.	Dimensions in mm (WxDxH)	For roller/small roller conveyor width in mm
07.89.40	294 x 294 x 25	300
07.89.41	394 x 394 x 25	400
07.89.43	294 x 294 x 40	300



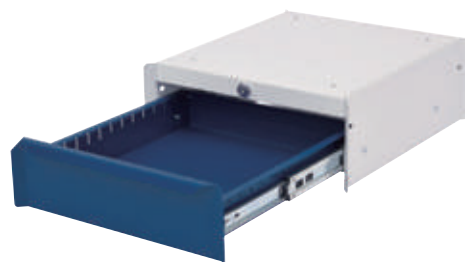
Cross-member for linking basic modules

Item no.	Length in mm
07.89.17	1000
07.89.16	1500

**PC support A**

- For side attachment
- 205 x 550 x 500 mm

Item no.	Design
07.89.07	Right
07.89.08	Left

**Hanging drawer block**

- Front height 100 mm
- Drawers with full pull-out (FP) 100%
- Load capacity 35 kg

Item no.	Dimensions in mm (WxDxH)
07.18.01	365 x 400 x 140

**Stopper**

- Supplied in pairs

Item no.	Dimensions in mm (WxDxH)
07.81.02	182 x 8 x 30

**End stop**

Item no.	Length in mm
07.8904.300	300
07.8904.400	400



- Top frame with bolted stiffening crossbar.
- For attaching the lighting and for holding the glider

Item no.	Design	Dimensions in mm (WxD)
1. 07.8910.1	Overhead frame	1000 x 750
1. 07.8915.1	Overhead frame	1500 x 750
2. 03.910.03	Equipment rail	1000



- Double-sided overhead frame with bolted reinforcement cross-members
- For attaching the lighting and for holding the glider

Item no.	Design	Dimensions in mm (WxDxH)
1. 07.8910.2	Overhead frame	1000 x 750
1. 07.8915.2	Overhead frame	1500 x 750
2. 03.915.03	Equipment rail	1500

WORKTOP DEPTH 390 MM



ROLLER CONVEYOR DEPTH 300 / 400 MM



**Beech multiplex**

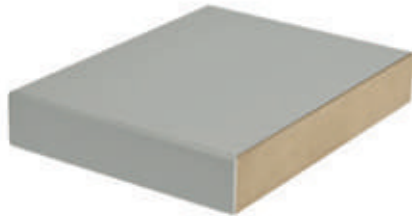
- Waterproof
- Dampened according to DIN 68705

Panel thickness	25 mm	40 mm
Dimensions in mm (WxD)	Item no.	Item no.
1500 x 390	07.8115.32	07.8115.34
1400 x 390 ZM*	07.8114.32	07.8114.34
1000 x 390	07.8110.32	07.8110.34
900 x 390 ZM*	07.8109.32	07.8109.34

**Chipboard panel directly coated with melamine resin**

- 4-sided, ABS edging
- Chipboard carrier panel with laminate coating
- Abrasion-resistant and easy to care for surface

Panel thickness	28 mm	40 mm
Dimensions in mm (WxD)	Item no.	Item no.
1500 x 390	07.8115.32M	07.8115.34M
1400 x 390 ZM*	07.8114.32M	07.8114.34M
1000 x 390	07.8110.32M	07.8110.34M
900 x 390 ZM*	07.8109.32M	07.8109.34M

**MDF worktop with 0.7 mm HPL coat**

- Highly abrasion-resistant
- 4-sided, ABS edging

Panel thickness	30 mm	40 mm
Dimensions in mm (WxD)	Item no.	Item no.
1500 x 390	07.8115.32H	07.8115.34H
1400 x 390 ZM*	07.8114.32H	07.8114.34H
1000 x 390	07.8110.32H	07.8110.34H
900 x 390 ZM*	07.8109.32H	07.8109.34H

**ESD conductive workbench top**

- Suitable for all electrostatically sensitive areas
- Surface RAL 7035

Panel thickness	30 mm	40 mm
Dimensions in mm (WxD)	Item no.	Item no.
1500 x 390	07.8115.32E	07.8115.34E
1400 x 390 ZM*	07.8114.32E	07.8114.34E
1000 x 390	07.8110.32E	07.8110.34E
900 x 390 ZM*	07.8109.32E	07.8109.34E

**Roller conveyor**

Depth	300 mm	400 mm
Length in mm	Item no.	Item no.
1500	07.8715.300	07.8715.400
1400 ZM*	07.8714.300	07.8714.400
1000	07.8710.300	07.8710.400
900 ZM*	07.8790.300	07.8790.400
500	07.8750.300	07.8750.400

**Small roller conveyor**

Depth	300 mm	400 mm
Length in mm	Item no.	Item no.
1500	07.8615.300	07.8615.400
1400 ZM*	07.8614.300	07.8614.400
1000	07.8610.300	07.8610.400
900 ZM*	07.8690.300	07.8690.400
500	07.8650.300	07.8650.400

***ZM** = intermediate size. These worktops are necessary for linkages.
e.g. 2x basic table and 1x ZM, 3x basic table and 2x ZM



1 | Corner panels

Corner worktops with worktop bracket for table-to-table connection

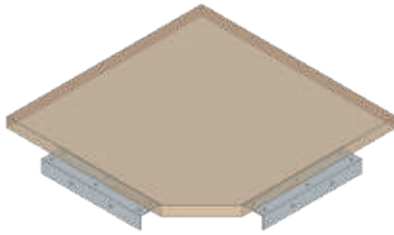


2 | Corner trapezoidal panels

Corner worktops with worktop bracket for table-to-table connection



1

**Beech multiplex**

- Waterproof
- Dampened according to DIN 68705

Item no.	Dimensions in mm (WxDxH)
07.8130.40	494 x 494 x 40
07.8140.40	394 x 394 x 40
07.8130.25	494 x 494 x 25
07.8140.25	394 x 394 x 25

2

**Chipboard panel directly coated with melamine resin**

- 4-sided, ABS edging
- Chipboard carrier panel with laminate coating
- Abrasion-resistant and easy to care for surface

Item no.	Dimensions in mm (WxDxH)
07.8130.40M	494 x 494 x 40
07.8140.40M	394 x 394 x 40
07.8130.25M	494 x 494 x 25
07.8140.25M	394 x 394 x 25

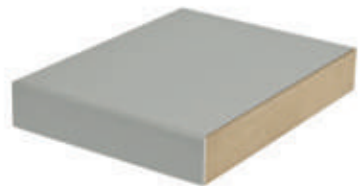
Item no.	Dimensions in mm (WxDxH)
07.8175.40	854 x 854 x 40
07.8175.25	854 x 854 x 25

**MDF worktop with 0.7 mm HPL coat**

- Highly abrasion-resistant
- 4-sided, ABS edging

Item no.	Dimensions in mm (WxDxH)
07.8130.40H	494 x 494 x 40
07.8140.40H	394 x 394 x 40
07.8130.25H	494 x 494 x 25
07.8140.25H	394 x 394 x 25

Item no.	Dimensions in mm (WxDxH)
07.8175.40M	854 x 854 x 40
07.8175.25M	854 x 854 x 25

**ESD conductive workbench top**

- Suitable for all electrostatically sensitive areas
- Surface RAL 7035

Item no.	Dimensions in mm (WxDxH)
07.8130.40E	494 x 494 x 40
07.8140.40E	394 x 394 x 40
07.8130.25E	494 x 494 x 25
07.8140.25E	394 x 394 x 25

Item no.	Dimensions in mm (WxDxH)
07.8175.40E	854 x 854 x 40
07.8175.25E	854 x 854 x 25





workergo - the versatile one





workergo C-foot linkages

Seite 336



workergo C-foot basic frames

Seite 340



workergo 4-foot linkages

Seite 342



workergo 4-foot basic frames

Seite 346



Multi-board setup

Seite 350



workergo base cabinets

Seite 352



workergo corner panels

Seite 354



C-foot tables



C-foot basic frame

New
Now even faster
and quieter!

workergo workplace systems

workergo - the versatile one

The **workergo** is the most versatile workplace systems. Six different frame widths, two different frame depths and four different types of height adjustment make the workergo C-foot a versatile worktable.

- Standard colours: RAL 7035 Light grey/RAL 5012 Light blue
- Base frame made of 45 x 45 mm steel tube
- Cross-members made of 40 x 40 mm aluminium sections



Please note that workergo tables are delivered unassembled. Easy self-assembly!



Our features at a glance

Modular system	Freely selectable combinations from frame to worktop
Retrofittable	Multi-board setup and optional accessories
Energy	Direct supply of lighting, energy, compressed air
Frame widths	750, 1000, 1250, 1500, 1750 and 2000 mm
Frame depths	600, 750 mm
Travel speed	12 mm/s
Work height without worktop	670 – 1015 mm Vertical travel: 345 mm
Height adjustment	Four different types: Clamp fixing, crank adjustment, electric height adjustment with 1 motor, electric height adjustment with 2 motors
Frame design	C-foot
Load capacity	180-300 kg with uniform load depending on height adjustment

FRAME DESIGN

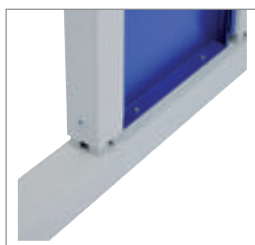


C-foot



Basic table

HEIGHT ADJUSTMENT:



Clamp fixing



Crank adjustment

Electric height adjustment,
1 motorElectric height adjustment,
2 motors

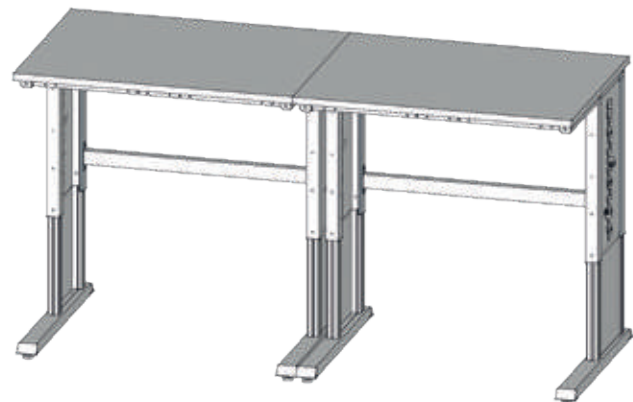
C-foot linkage variants



Cascading

- Cascading is required to adjust the height of several tables synchronously
- Linking up to 5 basic tables

Item no.	Description
4CKAS1-2	Y-connector for cascading 2 basic tables
4CKAS3-6	Lifting element for cascading 3 to 5 basic tables
4CKASVERB	Connecting element absolutely necessary for each individual basic table



Linkage consisting of two basic tables with multi-board setup and corner panel

C-foot linkage variants



Linkage consisting of two basic tables and two multi-board setups

Individual cover panel labelling on request





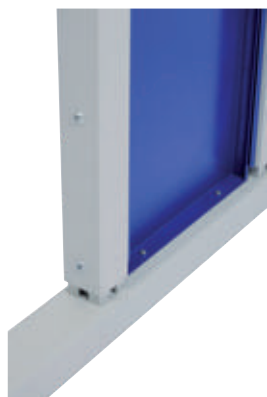
Available in
new widths



Cover panels are included as standard with C-foot

- For lateral mounting between the table legs

CLAMP FIXING - STANDARD



Item no.	Dimensions in mm (W x D x H)
C075KL60G	750 x 600 x 670 - 1015
C100KL60G	1000 x 600 x 670 - 1015
C125KL60G	1250 x 600 x 670 - 1015
C150KL60G	1500 x 600 x 670 - 1015
C175KL60G	1750 x 600 x 670 - 1015
C200KL60G	2000 x 600 x 670 - 1015
C075KL75G	750 x 750 x 670 - 1015
C100KL75G	1000 x 750 x 670 - 1015
C125KL75G	1250 x 750 x 670 - 1015
C150KL75G	1500 x 750 x 670 - 1015
C175KL75G	1750 x 750 x 670 - 1015
C200KL75G	2000 x 750 x 670 - 1015

CRANK ADJUSTMENT



Item no.	Dimensions in mm (W x D x H)
C075KU60G	750 x 600 x 670 - 1015
C100KU60G	1000 x 600 x 670 - 1015
C125KU60G	1250 x 600 x 670 - 1015
C150KU60G	1500 x 600 x 670 - 1015
C175KU60G	1750 x 600 x 670 - 1015
C200KU60G	2000 x 600 x 670 - 1015
C075KU75G	750 x 750 x 670 - 1015
C100KU75G	1000 x 750 x 670 - 1015
C125KU75G	1250 x 750 x 670 - 1015
C150KU75G	1500 x 750 x 670 - 1015
C175KU75G	1750 x 750 x 670 - 1015
C200KU75G	2000 x 750 x 670 - 1015

C-foot basic frame

You can find further
worktops on/from
page 422

workergo workplace systems

**Beech multiplex worktop**

- Glue laminated, oiled
- Waterproof
- Dampened according to DIN 68705

Item no.	Dimensions in mm (W x D x H)
03.1260.25	1250 x 600 x 25
03.1560.25	1500 x 600 x 25
03.2060.25	2000 x 600 x 25
03.125.25	1250 x 750 x 25
03.15.25	1500 x 750 x 25
03.20.25	2000 x 750 x 25

**Chipboard worktop with melamine resin coating**

- 4-sided, ABS edging
- Chipboard carrier plate with direct coating
- Abrasion-resistant and easy to care for surface

Item no.	Dimensions in mm (W x D x H)
07.M12560.28	1250 x 600 x 28
07.M1560.28	1500 x 600 x 28
07.M2060.28	2000 x 600 x 28
07.M12575.28	1250 x 750 x 28
07.M1575.28	1500 x 750 x 28
07.M2075.28	2000 x 750 x 28

ELECTRIC HEIGHT ADJUSTMENT, 1 MOTOR



- Manual switch "memory"
- Save up to 4 positions
- LCD-Display
- Mounted under the worktop



Item no.	Dimensions in mm (W x D x H)
C075E160G	750 x 600 x 670 - 1015
C100E160G	1000 x 600 x 670 - 1015
C125E160G	1250 x 600 x 670 - 1015
C150E160G	1500 x 600 x 670 - 1015
C175E160G	1750 x 600 x 670 - 1015
C200E160G	2000 x 600 x 670 - 1015
C075E175G	750 x 750 x 670 - 1015
C100E175G	1000 x 750 x 670 - 1015
C125E175G	1250 x 750 x 670 - 1015
C150E175G	1500 x 750 x 670 - 1015
C175E175G	1750 x 750 x 670 - 1015
C200E175G	2000 x 750 x 670 - 1015

ELECTRIC HEIGHT ADJUSTMENT, 2 MOTORS



- Manual switch "memory"
- Save up to 4 positions
- LCD-Display
- Mounted under the worktop



Item no.	Dimensions in mm (W x D x H)
C075E260G	750 x 600 x 670 - 1015
C100E260G	1000 x 600 x 670 - 1015
C125E260G	1250 x 600 x 670 - 1015
C150E260G	1500 x 600 x 670 - 1015
C175E260G	1750 x 600 x 670 - 1015
C200E260G	2000 x 600 x 670 - 1015
C075E275G	750 x 750 x 670 - 1015
C100E275G	1000 x 750 x 670 - 1015
C125E275G	1250 x 750 x 670 - 1015
C150E275G	1500 x 750 x 670 - 1015
C175E275G	1750 x 750 x 670 - 1015
C200E275G	2000 x 750 x 670 - 1015



4-foot tables



4-foot basic frame

New
Now even faster
and quieter!

workergo workplace systems

workergo - the versatile one

The workergo is the most versatile workplace systems. Six different frame widths, three different frame depths and four different types of height adjustment make the workergo 4-foot a versatile work-table.

- Standard colours: RAL 7035 light grey/RAL 5012 light blue
- Base frame made of 45 x 45 mm steel tube
- Cross-members made of 40 x 40 mm aluminium sections



Please note that workergo tables are delivered unassembled. Easy self-assembly!



Our features at a glance

Modular system	Freely selectable combinations from frame to worktop
Retrofittable	Multi-board setup and optional accessories
Energy	Direct supply of lighting, energy, compressed air
Frame widths	750, 1000, 1250, 1500, 1750 and 2000 mm
Frame depths	600, 750, 900 mm
Travel speed	12 mm/s
Work height without worktop	670 – 1015 mm Vertical travel: 345 mm
Height adjustment	Four different types: Clamp fixing, crank adjustment, electric height adjustment with 1 motor, electric height adjustment with 2 motors
Frame design	4-foot
Load capacity	180-300 kg with uniform load depending on height adjustment

FRAME DESIGN:



4-foot



Basic table

HEIGHT ADJUSTMENT:



Clamp fixing



Crank adjustment

Electric height adjustment,
1 motorElectric height adjustment,
2 motors

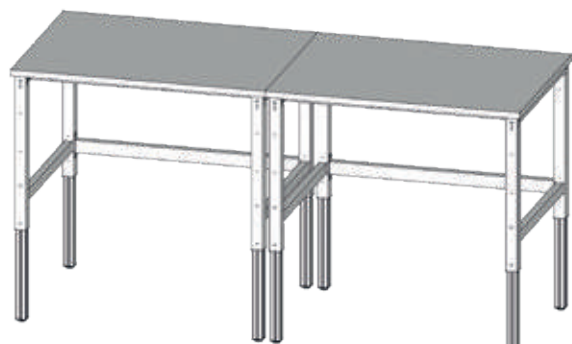
4-foot linkage variants



Corner combination with large corner panel comprising two basic tables.
Multi-board setup not possible on the corner panel.



Inline combination with two basic tables.
Multi-board setup possible on both tables.



Cascading

- Cascading is required to adjust the height of several tables synchronously
- Linking up to 5 basic tables

Item no.	Description
4CKAS1-2	Y-connector for cascading 2 basic tables
4CKAS3-6	Lifting element for cascading 3 to 5 basic tables
4CKASVERB	Connecting element absolutely necessary for each individual basic table



Ground anchorage

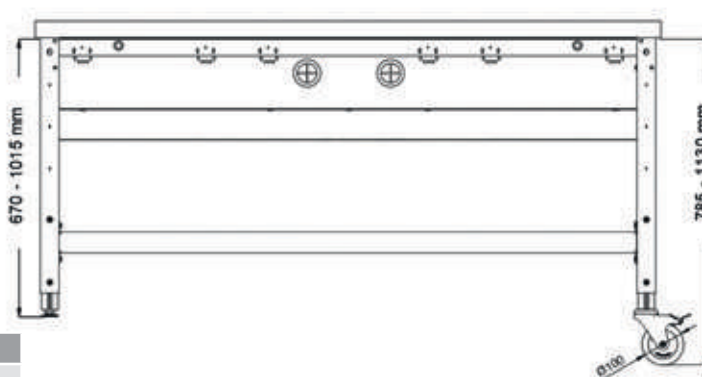
- For fixing the workbench to the floor
- 4 pieces

Item no.
03.00.34



workergo 4-foot - expander casters Ø 100 mm

Item no.	Description
4XXXXXMBL100	2 x fixed caster, 2 x steering caster with lock
4XXXXXMML100	4 x steering caster, thereof 2 with locks





Linkage consisting of two basic tables with multi-board setup on both tables.



Corner combination with large corner panel comprising two basic tables. Multi-board setup not possible on the corner panel.





Available in
new widths



Individual cover panel
labelling on page 39

workergo cover panel, 4-foot version

- For lateral mounting between the table legs of 4-foot tables

Item no.	Dimensions in mm (W x D x H)	For depth in mm
4XXXXX60BL	485 x 30 x 571	600
4XXXXX75BL	635 x 30 x 571	750
4XXXXX90BL	785 x 30 x 571	900

CLAMP FIXING - STANDARD



Item no.	Dimensions in mm (W x D x H)
4075KL60G	750 x 600 x 670 - 1015
4100KL60G	1000 x 600 x 670 - 1015
4125KL60G	1250 x 600 x 670 - 1015
4150KL60G	1500 x 600 x 670 - 1015
4175KL60G	1750 x 600 x 670 - 1015
4200KL60G	2000 x 600 x 670 - 1015
4075KL75G	750 x 750 x 670 - 1015
4100KL75G	1000 x 750 x 670 - 1015
4125KL75G	1250 x 750 x 670 - 1015
4150KL75G	1500 x 750 x 670 - 1015
4175KL75G	1750 x 750 x 670 - 1015
4200KL75G	2000 x 750 x 670 - 1015
4075KL90G	750 x 900 x 670 - 1015
4100KL90G	1000 x 900 x 670 - 1015
4125KL90G	1250 x 900 x 670 - 1015
4150KL90G	1500 x 900 x 670 - 1015
4175KL90G	1750 x 900 x 670 - 1015
4200KL90G	2000 x 900 x 670 - 1015

You can find further worktops on/from page 422



Beech multiplex worktop

- Glue laminated, oiled
- Waterproof
- Dampened according to DIN 68705

Item no.	Dimensions in mm (W x D x H)
03.1560.25	1500 x 600 x 25
03.2060.25	2000 x 600 x 25
03.15.25	1500 x 750 x 25
03.20.25	2000 x 750 x 25
03.1590.25	1500 x 900 x 25
03.2090.25	2000 x 900 x 25

Chipboard worktop with melamine resin coating

- 4-sided, ABS edging
- Chipboard carrier plate with direct coating
- Abrasion-resistant and easy to care for surface

Item no.	Dimensions in mm (W x D x H)
07.M1560.28	1500 x 600 x 28
07.M2060.28	2000 x 600 x 28
07.M1575.28	1500 x 750 x 28
07.M2075.28	2000 x 750 x 28
07.M1590.28	1500 x 900 x 28
07.M2090.28	2000 x 900 x 28

CRANK ADJUSTMENT



Item no.	Dimensions in mm (W x D x H)
4075KU60G	750 x 600 x 670 - 1015
4100KU60G	1000 x 600 x 670 - 1015
4125KU60G	1250 x 600 x 670 - 1015
4150KU60G	1500 x 600 x 670 - 1015
4175KU60G	1750 x 600 x 670 - 1015
4200KU60G	2000 x 600 x 670 - 1015
4075KU75G	750 x 750 x 670 - 1015
4100KU75G	1000 x 750 x 670 - 1015
4125KU75G	1250 x 750 x 670 - 1015
4150KU75G	1500 x 750 x 670 - 1015
4175KU75G	1750 x 750 x 670 - 1015
4200KU75G	2000 x 750 x 670 - 1015
4075KU90G	750 x 900 x 670 - 1015
4100KU90G	1000 x 900 x 670 - 1015
4125KU90G	1250 x 900 x 670 - 1015
4150KU90G	1500 x 900 x 670 - 1015
4175KU90G	1750 x 900 x 670 - 1015
4200KU90G	2000 x 900 x 670 - 1015





Available in
new widths

ELECTRIC HEIGHT ADJUSTMENT, 1 MOTOR

WE
V3



- Manual switch "memory"
- Save up to 4 positions
- LCD-Display
- Mounted under the worktop



Item no.	Dimenions in mm (W x D x H)
4075E160G	750 x 600 x 670 - 1015
4100E160G	1000 x 600 x 670 - 1015
4125E160G	1250 x 600 x 670 - 1015
4150E160G	1500 x 600 x 670 - 1015
4175E160G	1750 x 600 x 670 - 1015
4200E160G	2000 x 600 x 670 - 1015
4075E175G	750 x 750 x 670 - 1015
4100E175G	1000 x 750 x 670 - 1015
4125E175G	1250 x 750 x 670 - 1015
4150E175G	1500 x 750 x 670 - 1015
4175E175G	1750 x 750 x 670 - 1015
4200E175G	2000 x 750 x 670 - 1015
4075E190G	750 x 900 x 670 - 1015
4100E190G	1000 x 900 x 670 - 1015
4125E190G	1250 x 900 x 670 - 1015
4150E190G	1500 x 900 x 670 - 1015
4175E190G	1750 x 900 x 670 - 1015
4200E190G	2000 x 900 x 670 - 1015

ELECTRIC HEIGHT ADJUSTMENT, 2 MOTORS

WE
V4



- Manual switch "memory"
- Save up to 4 positions
- LCD-Display
- Mounted under the worktop



Item no.	Dimenions in mm (W x D x H)
4075E260G	750 x 600 x 670 - 1015
4100E260G	1000 x 600 x 670 - 1015
4125E260G	1250 x 600 x 670 - 1015
4150E260G	1500 x 600 x 670 - 1015
4175E260G	1750 x 600 x 670 - 1015
4200E260G	2000 x 600 x 670 - 1015
4075E275G	750 x 750 x 670 - 1015
4100E275G	1000 x 750 x 670 - 1015
4125E275G	1250 x 750 x 670 - 1015
4150E275G	1500 x 750 x 670 - 1015
4175E275G	1750 x 750 x 670 - 1015
4200E275G	2000 x 750 x 670 - 1015
4075E290G	750 x 900 x 670 - 1015
4100E290G	1000 x 900 x 670 - 1015
4125E290G	1250 x 900 x 670 - 1015
4150E290G	1500 x 900 x 670 - 1015
4175E290G	1750 x 900 x 670 - 1015
4200E290G	2000 x 900 x 670 - 1015



The equipment rail is mounted on the overhead frame and serves to accommodate the carriage or the lighting.

Item no.	Dimensions in mm (W x H)
03.910.03	1000 x 30 x 30
03.912.03	1250 x 30 x 30
03.915.03	1500 x 30 x 30
03.917.03	1750 x 30 x 30
03.920.03	2000 x 30 x 30
03.900.01	Carriage

You can find further accessories on/from page 284



Overhead frame with bolted reinforcement cross-members

Item no.	Dimensions in mm (W x H)
07.8910.1	1000 x 750
07.8912.1	1250 x 750
07.8915.1	1500 x 750

Overhead frame with bolted reinforcement cross-members

Item no.	Dimensions in mm (W x D)
07.8920.1	2000 x 750



workergo multi-board setup

- 2x support column
- 1x cross-member
- 1x rear wall

Item no.	Dimensions in mm (W x H)
03.10.14.01	1000 x 1491
03.12.14.01	1250 x 1491
03.15.14.01	1500 x 1491



Three support columns are required for a table width of 2000 mm. The number of perforated walls, magnetic boards and shelves doubles.



workergo multi-board setup

- 3x support column
- 2x cross-member
- 1x rear wall

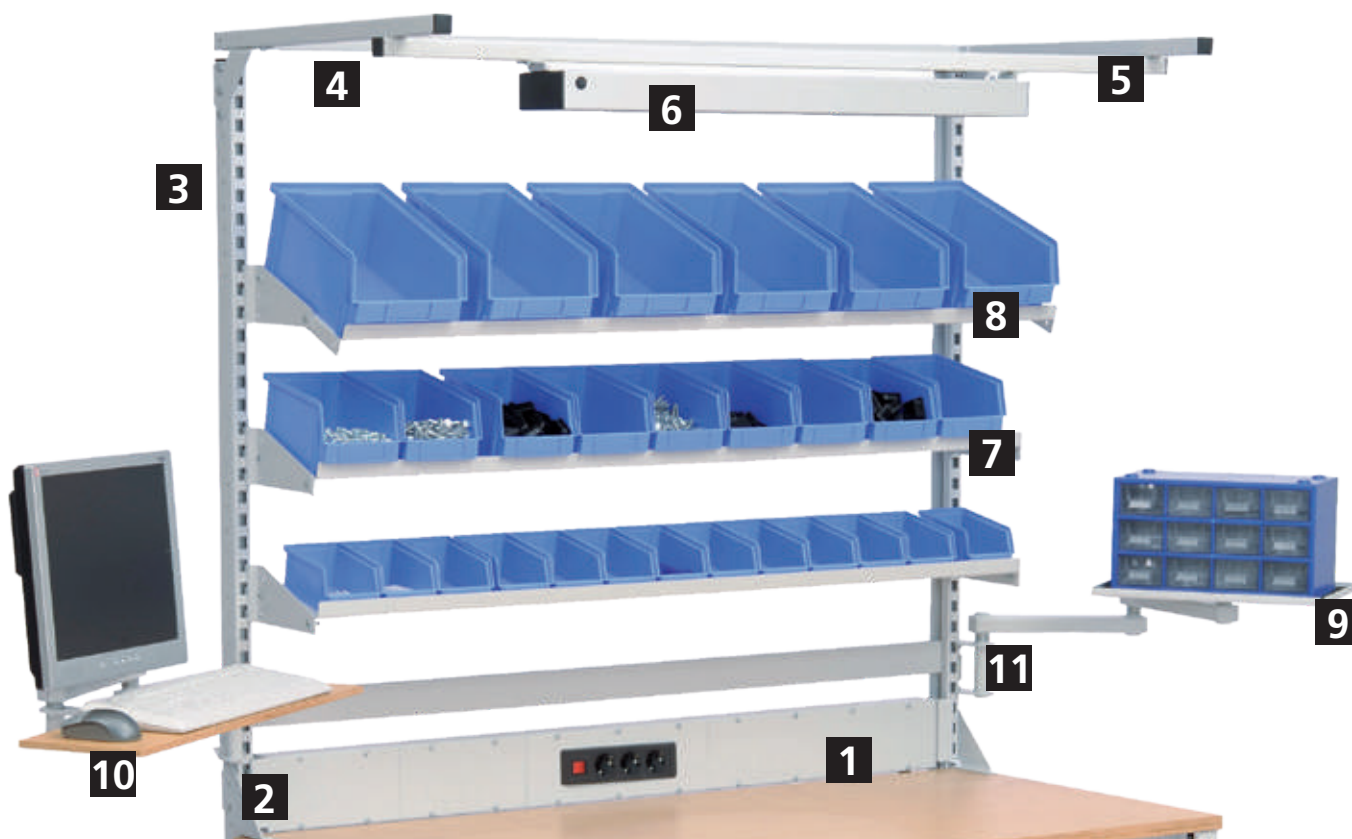
Item no.	Dimensions in mm (W x H)
03.20.14.01	2000 x 1491



workergo multi-board setup

- Overhead frames with equipment rail and lighting
- 3x support column
- 2x cross-member, 1x rear wall
- 2x magnetic board, 2x perforated wall
- 1x energy bar with 4x earthed sockets
- 2x shelf, 320 mm
- 1x pivot arm with platform, 1x pivot arm with shelf and ribbed rubber mat

Item no.	Dimensions in mm (W x H)
03.20.14.01-1	2000 x 1491



Setup example

- Setup 1500 mm
- Overhead frame with equipment rail and lighting
- 1x shelf, 220 mm
- 2x shelf, 320 mm
- 3x earthed sockets with 1x on/off switch
- 1x pivot arm with shelf
- 1x pivot arm with monitor bracket and keyboard platform

Pos.	Item no.	Dimensions in mm (W x D x H)	Description
1	07.861.15.10	1375 x 60 x 130	Energy duct , fully equipped and wired, 3x earthed socket with on/off switch
2	07.861.01-1	33 x 38 x 117	Energy duct mounting bracket for basic module. Bracket right and left for mounting between support columns
3	03.15.14.01	1500 x 1491	Support columns
4	07.8915.1	1500 x 750	Overhead frame with bolted reinforcement cross-members
5	03.915.03	1500 x 30 x 30	The equipment rail is mounted on the overhead frame and serves to accommodate the carriage, the lighting or a balancer.
6	03.960.20-1	898 x 135 x 60	Workplace lamp , light colour neutral white, energy efficiency class A, 230 V, 50 Hz, protection class IP 20, switch, incl. approx. 2.9 m mains cable and mains plug
7	03.915.220	1500 x 220 x 20	Shelf, 1500 mm , for hanging between the support columns, adjustable height and incline, inclination 0°, 10° and 20° incl. roll-off edge
8	03.915.320	1500 x 320 x 20	
9	07.98.11	420 x 300 x 20	Pivot arm with shelf and ribbed rubber mat , load capacity 25 kg, pivot arm bracket mandatory, not suitable for mounting on superstructure stand
10	07.98.08	700 x 355 x 322	Pivot arm with monitor bracket and keyboard platform , VESA 75/100 mm, beech multiplex shelf, 20 mm, pivot arm bracket mandatory, not suitable for mounting on superstructure stand
11	07.98.02		Pivot arm bracket

Supplied without hooks, boxes and decoration

Multi-board setup for C- and 4-foot base frames

workergo workplace systems

All variants: Overhead frame with equipment rail and lighting, **variant 1500 mm:** 2x support column

Variant 2000 mm: 3x support column, the number of perforated walls, magnetic boards and shelves doubles.



Item no.	Dimensions in mm (W x D x H)
4C150-1	1500 x 750 x 1250
4C200-1	2000 x 750 x 1250



- 2x perforated wall
- 1x magnetic board
- 1x energy bar with 3x earthed sockets and on/off switch

Item no.	Dimensions in mm (W x D x H)
4C150-2	1500 x 750 x 1250
4C200-2	2000 x 750 x 1250



- 2x perforated wall
- 1x shelf, 320 mm
- 1x shelf, 220 mm

Item no.	Dimensions in mm (W x D x H)
4C150-3	1500 x 750 x 1250
4C200-3	2000 x 750 x 1250



- 2x perforated wall
- 1x shelf, 320 mm
- 1x energy bar with 3x earthed sockets and on/off switch
- 1x pivot arm with 20 mm beech multiplex platform
- 1x pivot arm with shelf and ribbed rubber mat

Item no.	Dimensions in mm (W x D x H)
4C150-4	1500 x 750 x 1250
4C200-4	2000 x 750 x 1250



- 1x perforated wall
- 1x shelf, 320 mm
- 2x shelf, 220 mm
- 1x pivot arm with document holder
- 1x pivot arm with monitor bracket and keyboard platform

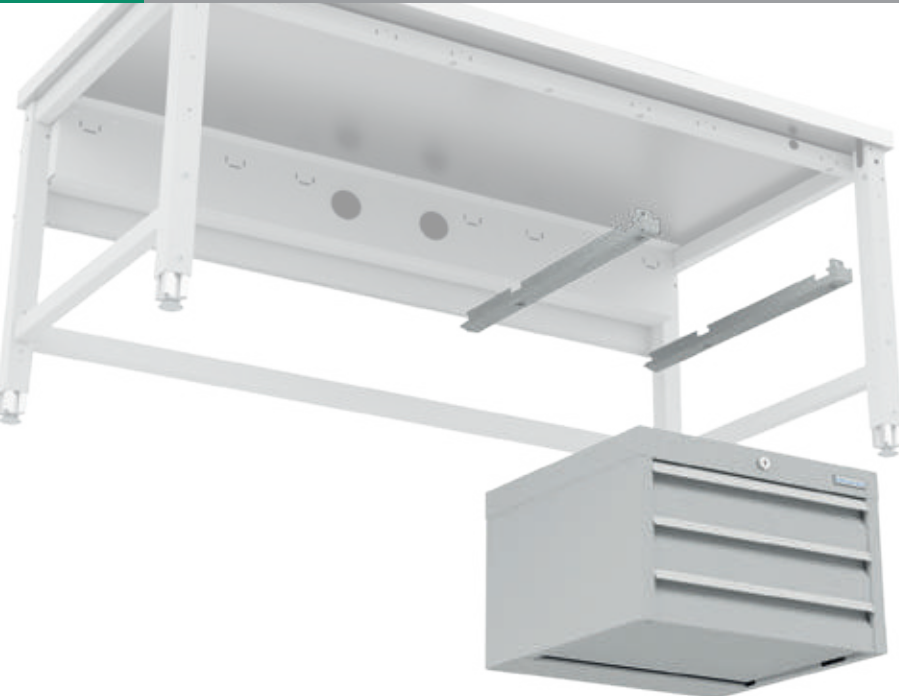
Item no.	Dimensions in mm (W x D x H)
4C150-5	1500 x 750 x 1250
4C200-5	2000 x 750 x 1250



- 1x shelf, 320 mm
- 2x shelf, 220 mm
- 1x energy bar with 3x earthed sockets and on/off switch
- 1x pivot arm with monitor bracket and keyboard platform
- 1x pivot arm with shelf and ribbed rubber mat

Item no.	Dimensions in mm (W x D x H)
4C150-6	1500 x 750 x 1250
4C200-6	2000 x 750 x 1250

Supplied without hooks, boxes and decoration



Supports for hanging cabinets

- Mandatory for installation of hanging cabinets
- Packing unit: 2 pieces

Item no.	Table depth in mm
4XXXXX75TR	750
4XXXXX90TR	900



Hanging base cabinet R 12-16/R 18-16

- Empty housing

Item no.	Dimensions in mm (W x D x H)	Usable height in mm
01.033	381 x 500 x 365	300
01.034	381 x 500 x 465	400
01.053	531 x 500 x 365	300
01.054	531 x 500 x 465	400



Hanging base cabinet R 18-24

- Empty housing

Item no.	Dimensions in mm (W x D x H)	Usable height in mm
01.0520	555 x 736 x 215	150
01.0530	555 x 736 x 365	300
01.0540	555 x 736 x 465	400



Drawer R 12-16/R18-16

- Full pull-out 100 %
- Load capacity 50 kg
- All specifications are usable dimensions

Item no.	Front height	Dimensions in mm (W x D x H)
60.038.100VA	100	300 x 400 x 90
60.038.150VA	150	300 x 400 x 140
60.046.075VA	75	450 x 400 x 65
60.046.100VA	100	450 x 400 x 90
60.046.150VA	150	450 x 400 x 140



Drawer R 18-24

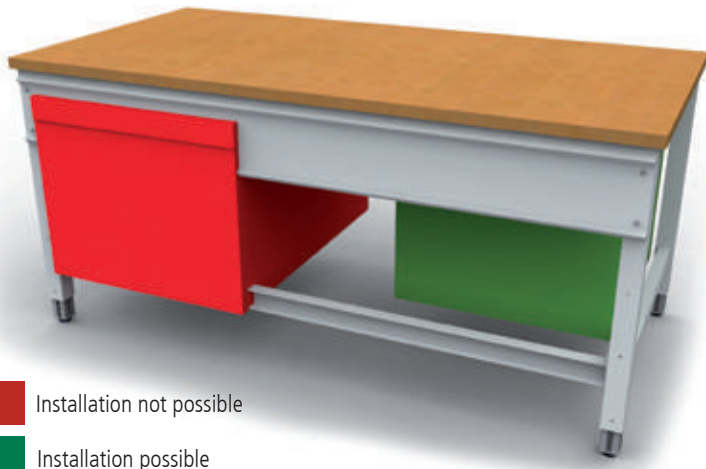
- Full pull-out 100 %
- Load capacity 70 kg with 50 mm front height
- Load capacity 100 kg with 100 mm front height
- All specifications are usable dimensions

Item no.	Front height	Dimensions in mm (W x D x H)
60.50.050V07	50	450 x 600 x 30
60.50.100V10	100	450 x 600 x 83
60.50.150V10	150	450 x 600 x 133
60.50.200V10	200	450 x 600 x 183

■ Installation not possible ■ Installation possible



Base cabinets with 736 mm depth cannot be used with table depths of 750 mm. These can only be installed from a table depth of 900 mm. Base Cabinets are not possible with a table depth of 600 mm.



- Installation not possible
- Installation possible



PC support H

- For attachment under the worktop
- Width adjustable

Item no.	Dimensions in mm (WxDxH)
07.89.06	250 x 550 x 500



- 1x hinged door, 350 mm

Item no.	Dimensions in mm (W x D x H)
44.001	531 x 500 x 465



- 2x drawer, 200 mm

Item no.	Dimensions in mm (W x D x H)
38.011	381 x 500 x 465
44.011	531 x 500 x 465



- 1x drawer, 150 mm

Item no.	Dimensions in mm (W x D x H)
38.150	381 x 500 x 215
53.150	531 x 500 x 215
520/1VA-1	555 x 736 x 215



- 3x drawer, 100 mm

Item no.	Dimensions in mm (W x D x H)
38.300	381 x 500 x 365
53.300	531 x 500 x 365



- 3x drawer: 1x 50 mm, 1x 100 mm, 1x 150 mm

Item no.	Dimensions in mm (W x D x H)
530.111V	555 x 736 x 365



- 4x drawer, 100 mm

Item no.	Dimensions in mm (W x D x H)
38.020	381 x 500 x 465
53.020	531 x 500 x 465
535/020V	555 x 736 x 465





■ Corner panels for table-to-table connection



Beech multiplex 25 mm

- Glue laminated, oiled
- Waterproof
- Dampened according to DIN 68705

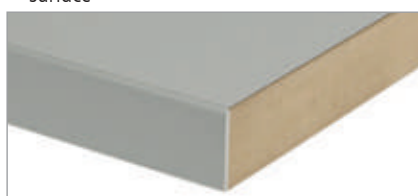
Clamp fixing and electric height adjustment	
A x B in mm	Item no.
600 x 600	BE1.6060K25
600 x 750	BE1.6075K25
600 x 900	BE1.6090K25
750 x 600	BE1.7560K25
750 x 750	BE1.7575K25
750 x 900	BE1.7590K25
900 x 600	BE1.9060K25
900 x 750	BE1.9075K25
900 x 900	BE1.9090K25



Chipboard panel, 28 mm, directly coated with melamine resin

- 4-sided, ABS edging
- Chipboard carrier plate with direct coating
- Abrasion-resistant and easy to care for surface

A x B in mm	Item no.
600 x 600	ME1.6060K28
600 x 750	ME1.6075K28
600 x 900	ME1.6090K28
750 x 600	ME1.7560K28
750 x 750	ME1.7575K28
750 x 900	ME1.7590K28
900 x 600	ME1.9060K28
900 x 750	ME1.9075K28
900 x 900	ME1.9090K28



MDF worktop, 30 mm, with 0.7 mm HPL coat

- 4-sided, ABS edging
- Heat and light resistant
- Stain-resistant, easy to clean and to disinfect

A x B in mm	Item no.
600 x 600	HE1.6060K30
600 x 750	HE1.6075K30
600 x 900	HE1.6090K30
750 x 600	HE1.7560K30
750 x 750	HE1.7575K30
750 x 900	HE1.7590K30
900 x 600	HE1.9060K30
900 x 750	HE1.9075K30
900 x 900	HE1.9090K30



ESD conductive workbench top, 30 mm

- Surface made from conductive HPL laminate
- Suitable for all electrostatically sensitive areas
- Surface RAL 7035



A x B in mm	Item no.
600 x 600	EE1.6060K30
600 x 750	EE1.6075K30
600 x 900	EE1.6090K30
750 x 600	EE1.7560K30
750 x 750	EE1.7575K30
750 x 900	EE1.7590K30
900 x 600	EE1.9060K30
900 x 750	EE1.9075K30
900 x 900	EE1.9090K30



■ Corner panels for table-to-table connection



Beech multiplex 25 mm

- Glue laminated, oiled
- Waterproof
- Dampened according to DIN 68705

Clamp fixing and electric height adjustment	
A x B in mm	Item no.
600 x 600	BE2.6060K25
600 x 750	BE2.6075K25
600 x 900	BE2.6090K25
750 x 600	BE2.7560K25
750 x 750	BE2.7575K25
750 x 900	BE2.7590K25
900 x 600	BE2.9060K25
900 x 750	BE2.9075K25
900 x 900	BE2.9090K25



Chipboard panel, 28 mm, directly coated with melamine resin

- 4-sided, ABS edging
- Chipboard carrier plate with direct coating
- Abrasion-resistant and easy to care for surface

A x B in mm	Item no.
600 x 600	ME2.6060K28
600 x 750	ME2.6075K28
600 x 900	ME2.6090K28
750 x 600	ME2.7560K28
750 x 750	ME2.7575K28
750 x 900	ME2.7590K28
900 x 600	ME2.9060K28
900 x 750	ME2.9075K28
900 x 900	ME2.9090K28



MDF worktop, 30 mm, with 0.7 mm HPL coat

- 4-sided, ABS edging
- Heat and light resistant
- Stain-resistant, easy to clean and to disinfect

A x B in mm	Item no.
600 x 600	HE2.6060K30
600 x 750	HE2.6075K30
600 x 900	HE2.6090K30
750 x 600	HE2.7560K30
750 x 750	HE2.7575K30
750 x 900	HE2.7590K30
900 x 600	HE2.9060K30
900 x 750	HE2.9075K30
900 x 900	HE2.9090K30



ESD conductive workbench top, 30 mm

- Surface made from conductive HPL laminate
- Suitable for all electrostatically sensitive areas
- Surface RAL 7035



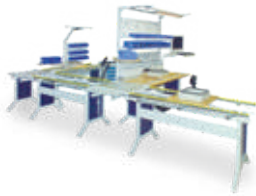
A x B in mm	Item no.
600 x 600	EE2.6060K30
600 x 750	EE2.6075K30
600 x 900	EE2.6090K30
750 x 600	EE2.7560K30
750 x 750	EE2.7575K30
750 x 900	EE2.7590K30
900 x 600	EE2.9060K30
900 x 750	EE2.9075K30
900 x 900	EE2.9090K30





workline - the highest one





workline and linkage

Page 358



workline Linkage accessories

Page 360



workline Combinations from practice with multi-board setup

Page 365



workline Multi-board setup

Page 366



workline Combinations from practice with superstructure stand

Page 368



workline Basic tables and add-on tables

Page 370



workline corner panels and base cabinets

Page 372



workline Superstructure stand | Accessories

Page 373





Grid subdivision



Series
workline



Housing W x D
365 x 400

Height	Usable heights
500	400



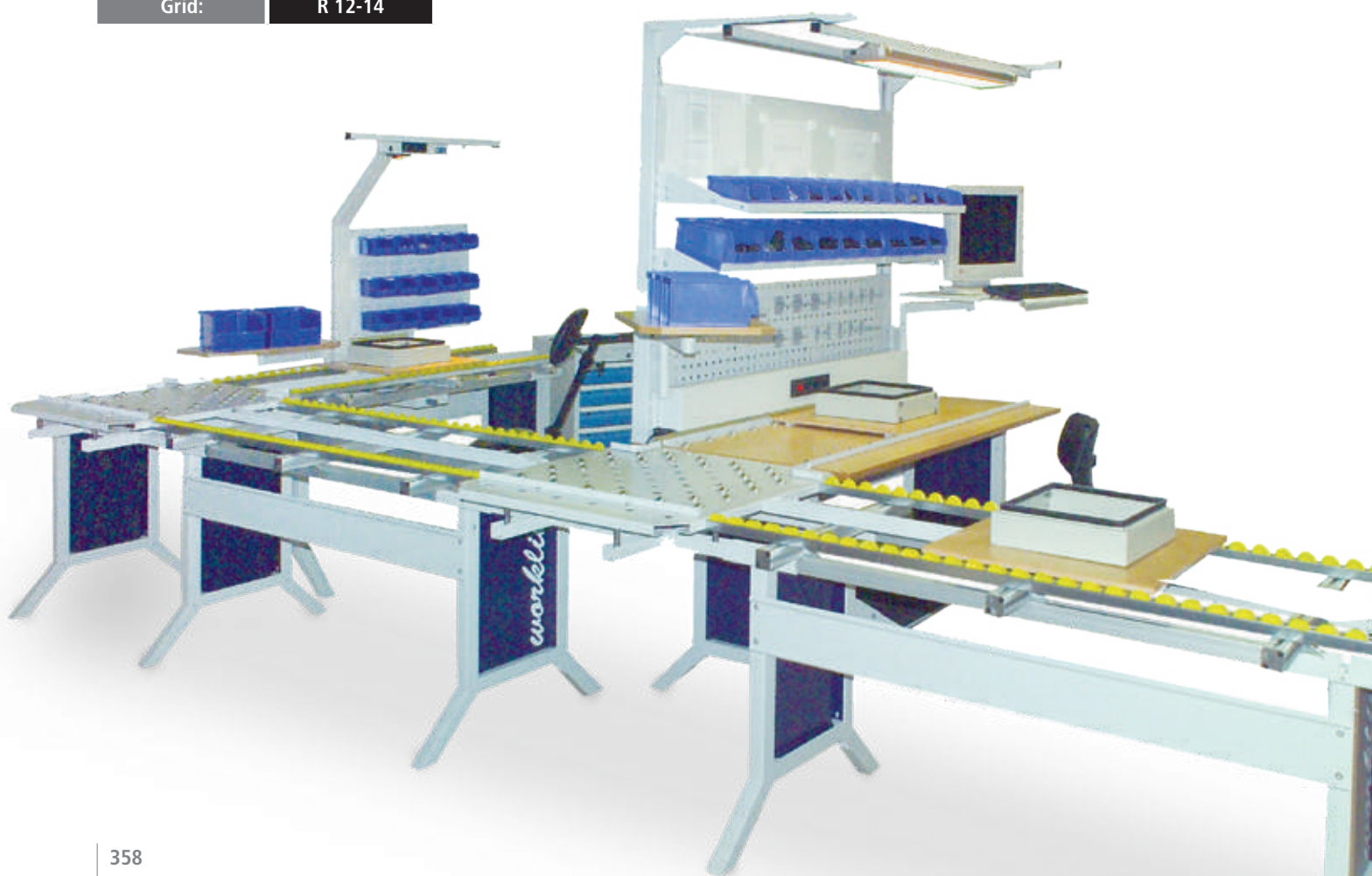
Drawer W x D
300 x 350

Height	Load capacity
100	20 kg
200	20 kg
400	20 kg



Series
workline
T370 12-14

Grid:	R 12-14
-------	---------



workline - the highest one

The **workline** worktable achieves a working height of 1100 mm thanks to its continuous height adjustment and is therefore also an optimal standing workplace. At the same time, its simple and functional design ensures an ergonomic seated workplace.

- Standard colours: RAL 7035 Light grey / RAL 5013 Cobalt blue
- Base frame made of 45 x 45 mm steel tube Cross-members made of 40 x 40 mm aluminium sections



Please note that workline tables are delivered unassembled. Easy self-assembly!



Our features at a glance

Modular system	Individual workstations can be quickly expanded to group workstations
Retrofittable	Wide range of accessories: Flexible design and conversion of the workplace
Energy	Direct supply of lighting, power, compressed air
Frame widths	1000, 1500 mm
Frame depth	750 mm
Travel speed	6.25 mm/s
Work height without worktop	735 – 1100 mm Vertical travel: 365 mm
Height adjustment	Three different types: Clamp fixing, crank adjustment, electric height adjustment
Frame design	A-foot
Load capacity	180-200 kg with uniform load depending on height adjustment

FRAME DESIGN:

WL

1



Basic table



Add-on table

HEIGHT ADJUSTMENT:

WL

1



Clamp fixing

WL

2



Crank adjustment

WL

3



Electric height adjustment,
1 motor





Basic table with worktop



workline basic table with clamp fixing

- Beech multiplex worktop 25 mm



Item no.	Dimensions in mm (WxDxH)
07.75.10	1000 x 750 x 735 – 1100
07.75.15	1500 x 750 x 735 – 1100

workline basic table with crank adjustment

- Beech multiplex worktop 25 mm



Item no.	Dimensions in mm (WxDxH)
07.75.10KHV	1000 x 750 x 735 – 1100
07.75.15KHV	1500 x 750 x 735 – 1100

workline basic table with electric height adjustment

- Beech multiplex worktop 25 mm



Item no.	Dimensions in mm (WxDxH)
07.75.10EHV	1000 x 750 x 735 – 1100
07.75.15EHV	1500 x 750 x 735 – 1100

**workline add-on table with clamp fixing**

- Beech multiplex worktop 25 mm
- Can be used left or right



Item no.	Dimensions in mm (WxDxH)
07.10.15	1000 x 750 x 735 – 1100
07.15.15	1500 x 750 x 735 – 1100

workline add-on table gear drive for crank adjustment and electric height adjustment

- Beech multiplex worktop 25 mm
- Can be used left or right - Please state the side when ordering



Item no.	Dimensions in mm (WxDxH)
07.10.15KHV	1000 x 750 x 735 – 1100
07.15.15KHV	1500 x 750 x 735 – 1100





You can find
multi-board accessories
on/from page 422



WL
1
kg
200

workline basic table with clamp fixing

Item no.	Dimensions in mm (WxDxH)
07/10/1970	1000 x 750 x 735 – 1100
07/10/1975	1500 x 750 x 735 – 1100



WL
2
kg
200

workline basic frame with crank adjustment

Item no.	Dimensions in mm (WxDxH)
07.10.70KHV	1000 x 750 x 735 – 1100
07.10.75KHV	1500 x 750 x 735 – 1100

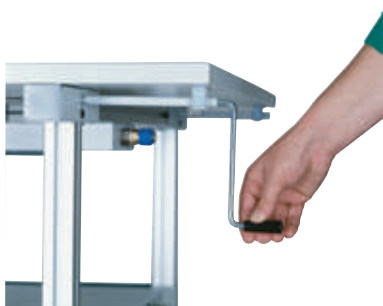


WL
3
kg
180

workline basic frame with electric height adjustment

Item no.	Dimensions in mm (WxDxH)
07.10.70EHV	1000 x 750 x 735 – 1100
07.10.75EHV	1500 x 750 x 735 – 1100

The add-on table only requires crank adjustment if the basic table is electrically adjustable. 1x motor for 1x basic table and 1x add-on table



Crank adjustment retrofit kit

- For one base or add-on table maximum

Item no.	Designation
07.00.42	Crank adjustment basic table 1000
07.00.43	Crank adjustment add-on table 1000
07.00.40	Crank adjustment basic table 1500
07.00.41	Crank adjustment add-on table 1500



Electric height adjustment retrofit kit

- The crank height adjustment is a prerequisite for the electrical height adjustment
- For one base and add-on table maximum

Item no.	Designation
07.00.45	Electrical height adjustment



workline add-on frame with clamp fixing

- Can be used left or right



1 WL

kg
200

Item no.	Dimensions in mm (WxDxH)
07/10/1972	1000 x 750 x 735 – 1100
07.15.72	1500 x 750 x 735 – 1100



2 WL

kg
200

workline add-on frame with gear drive for crank adjustment and electric height adjustment

- Can be used left or right - Please state the side when ordering



3 WL

kg
180

Item no.	Dimensions in mm (WxDxH)
07.10.72KHV	1000 x 750 x 735 – 1100
07.15.72KHV	1500 x 750 x 735 – 1100

Basic and add-on table connection



workline basic table and add-on table

- incl. 2x beech multiplex worktop 25 mm

Item no.	Dimensions in mm (WxDxH)	Design
07.30.15	3000 x 750 x 735 – 1100	Clamp adjustment
07.30.15KHV	3000 x 750 x 735 – 1100	Crank adjustment
07.30.15EHV	3000 x 750 x 735 – 1100	Electric height adjustment





workline basic table

- Beech multiplex worktop 25 mm
- 1x drawer, 100 mm
- 1x footrest

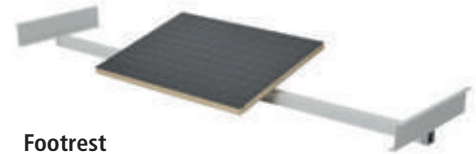
Item no.	Load capacity in kg	Dimensions in mm (WxDxH)
07.25.25	200	1000 x 750 x 735 – 1100 with clamp fixing
07.75.25KHV	200	1000 x 750 x 735 – 1100 with crank adjustment
07.75.25EHV	180	1000 x 750 x 735 – 1100 with electric height adjustment



workline basic table

- Beech multiplex worktop 25 mm
- 1x shelf, 3rd level

Item no.	Load capacity in kg	Dimensions in mm (WxDxH)
07.75.41	200	1500 x 750 x 735 – 1100 with clamp fixing
07.75.41KHV	200	1500 x 750 x 735 – 1100 with crank adjustment
07.75.41EHV	180	1500 x 750 x 735 – 1100 with electric height adjustment



Footrest

- Only for workline tables
- Inclined, coated with anti-slip mat
- W x D x H: 400 x 350 x 20 mm

Item no.	Design
07.00.20	Basic table 1000
07.00.21	Add-on table 1000
07.00.25	Basic table 1500
07.00.26	Add-on table 1500



Shelf, 3rd level

- Beech multiplex 25 mm

Item no.	Dimensions in mm (WxDxH)
07.25.33	1000 x 260 x 300
07.25.35	1500 x 260 x 300

Corner connection for two basic tables

- 1x corner worktop or
- 1x triangular worktop

**Corner worktop without corner connector**

- Beech multiplex

Item no.	Dimensions in mm (WxDxH)
07.25.90	750 x 750 x 25

- Chipboard panel melamine resin

Item no.	Dimensions in mm (WxDxH)
07.26.91	750 x 750 x 28

- ESD conductive

Item no.	Dimensions in mm (WxDxH)
07.24.91	750 x 750 x 30

Table-to-table connector see page 430

Triangular worktop without corner connector

- Beech multiplex

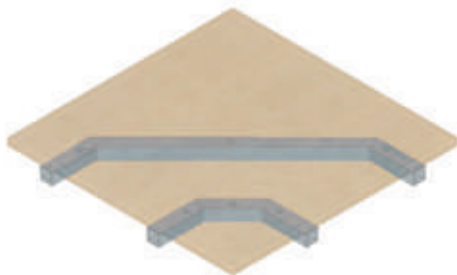
Item no.	Dimensions in mm (WxDxH)
07.27.90	750 x 750 x 25

- Chipboard panel melamine resin

Item no.	Dimensions in mm (WxDxH)
07.28.91	750 x 750 x 28

- ESD conductive

Item no.	Dimensions in mm (WxDxH)
07.29.91	750 x 750 x 30

Base cabinets, load capacity of drawers 20 kg**Corner connector**

- Steel tube

Item no.	Description
07.30.90	90° connection

Hanging drawer blocks

- 1 x drawer, 400 mm
- 1x bottle holder and intermediate support
- 2x shelf and frame for suspension files

Item no.	Dimensions in mm (WxDxH)
07.18.00	365 x 400 x 500

Hanging drawer blocks

- 1x drawer, 100 mm

Item no.	Dimensions in mm (WxDxH)
07.18.01	365 x 400 x 140

**Hanging drawer blocks**

- 2x drawer, 100 mm
- 1x drawer, 200 mm

Item no.	Dimensions in mm (WxDxH)
07.18.03	365 x 400 x 500

Hanging drawer blocks

- 4x drawer, 100 mm

Item no.	Dimensions in mm (WxDxH)
07.18.04	365 x 400 x 500

Hanging drawer blocks

- 2x drawer, 200 mm

Item no.	Dimensions in mm (WxDxH)
07.18.02	365 x 400 x 500





You can find multi-board accessories on/from page 284



workline basic table with clamp fixing

Multi-board setup

- 2x support column
- 1x overhead frame
- 1x equipment rail
- 1x LED illumination 28.9 W, 1290 lx
- 1x magnetic board and 1x perforated wall, 302 mm
- 2x inclinable shelf, 320 mm

Item no.	Dimensions in mm (WxDxH)	Design
07.75.15	1500 x 750 x 735 – 1100	workline basic table
03.900.15.13	1500 x 750 x 1250	Multi-board setup



workline basic table with crank adjustment

- 1x footrest
- 1x drawer block with 3x drawer, load capacity 20 kg

Multi-board setup

- 2x support column
- 1x energy bar with 3x earthed sockets and on/off switch
- 1x perforated wall, 1 magnetic board, 2x shelf, 320 mm
- 2x pivot arm support
- 1x pivot arm with platform
- 1x pivot arm with monitor bracket and keyboard platform
- 1x overhead frame, 1x equipment rail
- 1x LED illumination 28.9 W, 1290 lx

Item no.	Dimensions in mm (WxDxH)	Design
07.75.17	1500 x 750 x 735 – 1100	workline basic table
03.900.75.18	1500 x 750 x 1250	Multi-board setup

Supplied without hooks, boxes and decoration



**workline basic and add-on table
combination with clamp fixing**

- Beech multiplex worktop 25 mm

Multi-board setup

- 3x support column
- 1x energy bar with 3x earthed sockets and on/off switch
- 1x perforated wall
- 1x shelf, 220 mm
- 1x shelf, 320 mm
- 1x multi roller shutter cabinet
- 1x overhead frame, 1x equipment rail
- 1 pair of joists
- 1x LED illumination 28.9 W, 1290 lx



Item no.	Dimensions in mm (WxDxH)	Design
07.20.15/40	2000 x 750 x 735 – 1100	workline basic table and add-on table
03.900.21	2000 x 750 x 1250	Multi-board setup

**workline basic and add-on table
combination with crank adjustment**

- 2x beech multiplex worktop 25 mm
- 1x drawer block with 3x drawer, load capacity 20 kg
- 1x superstructure frame
- 1x pivot arm with monitor bracket and keyboard platform

Multi-board setup 1500 mm

- 2x support column, 1x overhead frame
- 1x equipment rail
- 1x LED illumination 28.9 W, 1290 lx
- 1x energy bar with 3x earthed sockets and on/off switch
- 1x magnetic board and 1x perforated wall, 302 mm
- 1x shelf, 320 mm



Item no.	Dimensions in mm (WxDxH)	Design
07.10.15.10.96	3000 x 750 x 735 – 1100	workline basic and add-on table with multi-board setup

Supplied without hooks, boxes and decoration

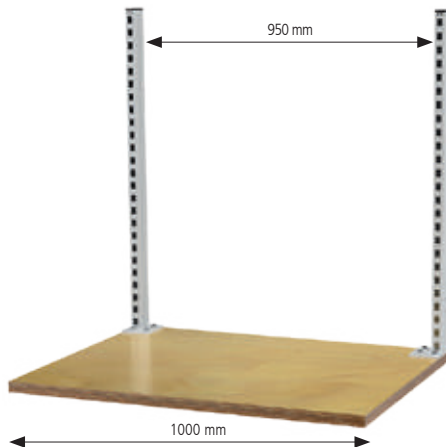




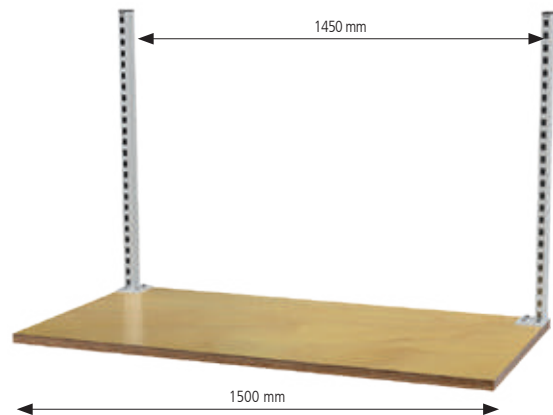
Multi-board setup



Suitable for mounting on workline worktables



- Table width 1000 mm
- Superstructure width centre-centre 950 mm
- 1x support column left
- 1x support column right



- Table width 1500 mm
- Superstructure width centre-centre 1450 mm
- 1x support column left
- 1x support column right

Support column profile 30 x 60 mm

- Reinforced by U-profile tube
- Lower panel thicknesses on request
- 3 support columns are required for assembly on 2 m work surfaces



Item no.	Dimensions in mm
03.935.650.225	650 left
03.935.650.125	650 right
03.935.950.225	950 left
03.935.950.125	950 right
03.935.125.225	1250 left
03.935.125.125	1250 right

Multi-board setup

workline workplace systems



- 2x support column, 1x overhead frame, 1x equipment rail
- 1x LED illumination 28.9 W, 1290 lx
- 1x energy bar with 3x earthed sockets and on/off switch
- 2x 1/4" compressed air connection, 2x shelf, 320 mm
- 1x perforated wall
- 1x pivot arm with platform, 1 x Swivel arm holder

Item no.	Dimensions in mm (WxDxH)
03.9001524WL	1500 x 750 x 1250



- 2x support column, 1x overhead frame, 1x equipment rail
- 1x LED illumination 28.9 W, 1290 lx
- 1x energy bar with 3x earthed sockets and on/off switch
- 3x shelf, 320 mm, 1x perforated wall

Item no.	Dimensions in mm (WxDxH)
03.9001525WL	1500 x 750 x 1250



- 2x support column, 1x overhead frame, 1x equipment rail
- 1x LED illumination 28.9 W, 1290 lx
- 1x energy bar with 3x earthed sockets and on/off switch
- 2x 1/4" compressed air connection, 2x shelf, 320 mm

Item no.	Dimensions in mm (WxDxH)
03.9001523WL	1500 x 750 x 1250



- 2x support column, 1x overhead frame, 1x equipment rail
- 1x LED illumination 28.9 W, 1290 lx
- 1x energy bar with 3x earthed sockets and on/off switch
- 2x 1/4" compressed air connection, 1x shelf, 320 mm, 1x perforated wall, 1x magnetic board
- 1x pivot arm with platform, 1 x Swivel arm holder

Item no.	Dimensions in mm (WxDxH)
03.9001521WL	1500 x 750 x 1250



- 2x support column, 1x overhead frame, 1x equipment rail
- 1x LED illumination 28.9 W, 1290 lx
- 1x energy bar with 3x earthed sockets and on/off switch
- 4x shelf, 320 mm

Item no.	Dimensions in mm (WxDxH)
03.9001522WL	1500 x 750 x 1250



- 2x support column, 1x overhead frame, 1x equipment rail
- 1x LED illumination 28.9 W, 1290 lx
- 1x energy bar with 3x earthed sockets and on/off switch
- 2x 1/4" compressed air connection, 1x shelf, 320 mm
- 1x perforated wall, 1x magnetic board

Item no.	Dimensions in mm (WxDxH)
03.9001520WL	1500 x 750 x 1250





workline basic table

- Beech multiplex worktop 25 mm
- 1x drawer block with 3x drawer: 2x 100 mm, 1x 200 mm, load capacity 20 kg

Superstructure frame

- 1x superstructure frame for stand
- 1x stand with 2x earthed sockets and 1x halogen lamp
- 1x pivot arm with shelf
- 1x pivot arm with perforated/slotted wall
- Without spring balancer and open front storage bins

Item no.	Dimensions in mm (WxDxH)	Design
07.75.96	1500 x 750 x 735 – 1100	Clamp fixing
07.75.96KHV	1500 x 750 x 735 – 1100	Crank fixing

workline basic table

- Beech multiplex worktop 25 mm
- 1x footrest, 1x PC support
- 1x drawer block with 1x drawer: 100 mm, load capacity 20 kg

Superstructure frame

- 1x superstructure frame for stand
- 1x stand with 2x earthed sockets and 1x halogen lamp
- 1x pivot arm with monitor and keyboard platform

Item no.	Dimensions in mm (WxDxH)	Design
07.75.55	1500 x 750 x 735 – 1100	Clamp fixing
07.75.55KHV	1500 x 750 x 735 – 1100	Crank fixing

**PC support H**

- For attachment under the worktop
- Width adjustable

Item no.	Dimensions in mm (WxDxH)
07.89.06	250 x 550 x 500

**Foot shelf**

- Only for workline tables
- Beech multiplex top 25 mm

Item no.	Dimensions in mm (WxD)	Design
07.30.20	1000 x 350	Basic table
07.30.21	1000 x 350	Add-on table
07.30.25	1500 x 350	Basic table
07.30.26	1500 x 350	Add-on table

**workline basic table**

- Beech multiplex worktop 25 mm
- 1x drawer block with 1x drawer, 100 mm, load capacity 20 kg
- 1x shelf, 3rd level beech multiplex (top)

Superstructure frame

- 1x superstructure frame for stand
- 1x stand with 2x earthed sockets and 1x halogen lamp

Item no.	Dimensions in mm (WxDxH)	Design
07.75.46	1500 x 750 x 735 – 1100	Clamp fixing
07.75.46KHV	1500 x 750 x 735 – 1100	Crank fixing

workline basic table

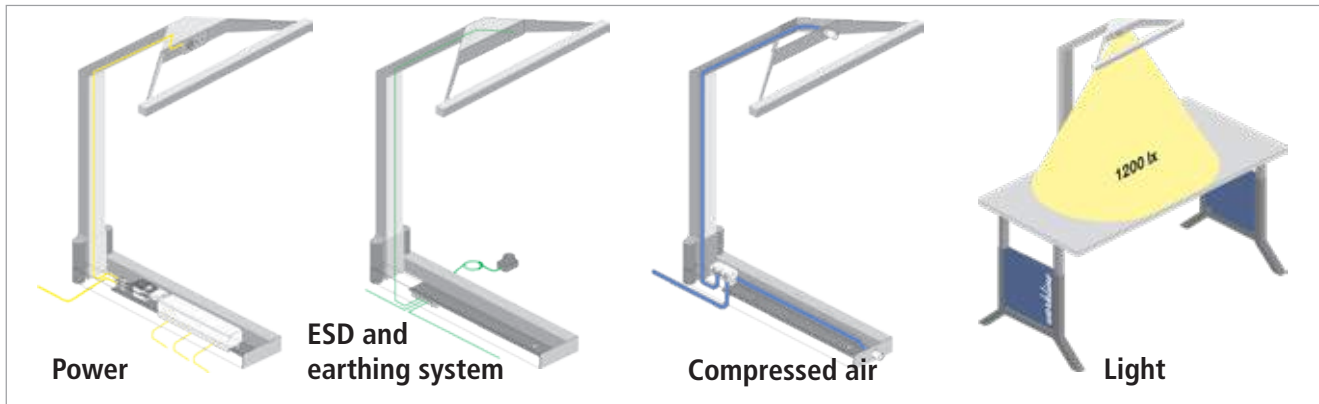
- Beech multiplex worktop 25 mm

Superstructure frame

- 1x superstructure frame for stand
- 1x stand with 2x earthed sockets and 1x halogen lamp

Item no.	Dimensions in mm (WxDxH)	Design
07.75.35	1500 x 750 x 735 – 1100	Clamp fixing
07.75.35KHV	1500 x 750 x 735 – 1100	Crank fixing





Superstructure frame below the worktop



Please note:

Mandatory for stand and pivot arms

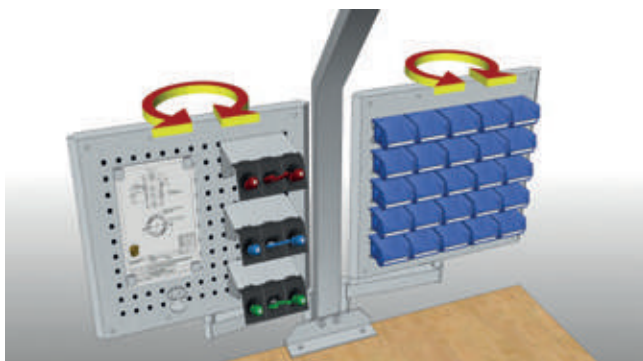
Item no.	Dimensions in mm (WxDxH)
07.40.00	610 x 170 x 130
07.40.01	Surcharge power supply
07.40.02	Surcharge compressed air distributor



Stand

- For structures with 2x earthed sockets and 1x halogen lightning 35 W
- Total height 1130 mm

Item no.	Design
07.40.06	Standard
07.40.07	Surcharge for compressed air distributor



360° pivot arm inserts offer maximum flexibility for the work to be carried out.



Sockets, compressed air connections and a halogen lamp are integrated into the stand. This saves the space an additional energy bar would require.

**Please note:**

- The superstructure frame below the worktop is mandatory for pivot arms
- Load capacity 25 kg

**Pivot arm with pivot frame and shelves**

- 2x inclinable shelf

Item no.	Dimensions in mm (WxDxH)
07.98.03	680 x 287 x 400

**Pivot arm with depositing tray**

Item no.	Dimensions in mm (WxDxH)
07.98.04	400 x 300 x 48

**Pivot arm with document holder A4 Portrait format**

- With raised lateral and bottom edge

Item no.	Dimensions in mm (WxDxH)
07.98.05	215 x 370 x 330

**Pivot arm with document holder A4 Landscape format**

- With raised bottom edge

Item no.	Dimensions in mm (WxDxH)
07.98.06	310 x 156 x 310

**Pivot arm with monitor bracket**

- VESA 75 / 100 mm

Item no.	Dimensions in mm (WxDxH)
07.98.07	130 x 370 x 320

**Pivot arm with monitor bracket and keyboard platform**

- VESA 75 / 100 mm
- Beech multiplex shelf, 15 mm

Item no.	Dimensions in mm (WxDxH)
07.98.08	700 x 355 x 322





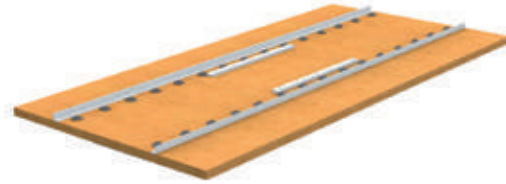
Linkage accessories



workline roller ball table

- Beech multiplex worktop 25 mm
- 2x workpiece carrier stop
- Integrated roller ball rail
- Height-adjustable with clamp fixing
- incl. guide rails

Item no.	Depth of workpiece carrier in mm	Dimensions in mm (WxDxH)
07.60.10.40	384	1000 x 750 x 735 – 1100
07.60.15.40	384	1500 x 750 x 735 – 1100
07.60.10.50	500	1000 x 750 x 735 – 1100
07.60.15.50	500	1500 x 750 x 735 – 1100
07.60.10.60	616	1000 x 750 x 735 – 1100
07.60.15.60	616	1500 x 750 x 735 – 1100



Beech multiplex worktop incl. roller ball rail

- Beech multiplex worktop 25 mm
- Integrated roller ball rail
- Incl. guide rails and 2 x workpiece carrier stop

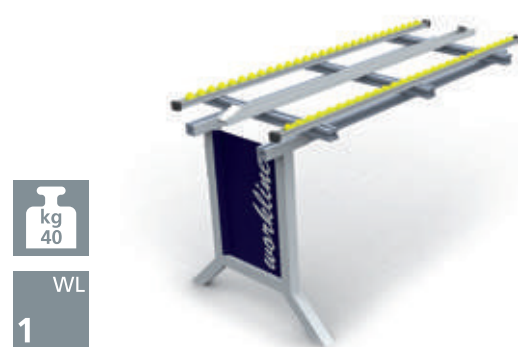
Item no.	Depth of workpiece carrier in mm	Dimensions in mm (WxDxH)
07.60.90	384	1000 x 750 x 25
07.60.91	384	1500 x 750 x 25
07.60.92	500	1000 x 750 x 25
07.60.93	500	1500 x 750 x 25
07.60.94	616	1000 x 750 x 25
07.60.95	616	1500 x 750 x 25



workline basic table with small roller conveyor

- 1x small roller conveyor up to 600 mm depth
- Continuously height-adjustable with clamp fixing

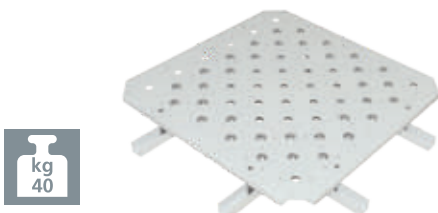
Item no.	Dimensions in mm (WxDxH)
07.60.100	1000 x 600 x 790 – 1100
07.60.150	1500 x 600 x 790 – 1100



workline add-on table with small roller conveyor

- 1x small roller conveyor up to 600 mm depth
- Continuously height-adjustable with clamp fixing

Item no.	Dimensions in mm (WxDxH)
07.61.100	1000 x 600 x 790 – 1100
07.61.150	1500 x 600 x 790 – 1100



Roller ball table - bridge

- Without guide rails
- For an intersection with 3 or 4 junctions

Item no.	Dimensions in mm (WxD)
07.60.70	3 junctions - 750 x 750
07.60.71	4 junctions - 750 x 750



Roller ball table - end module

- Without guide rails, with one intersection and two junctions

Item no.	Dimensions in mm (WxD)
07.61.70	750 x 750



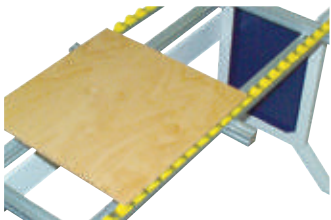
Workpiece carrier rail with 1x stopper

Item no.	Width in mm
07.60.03	1000
07.60.01	1500



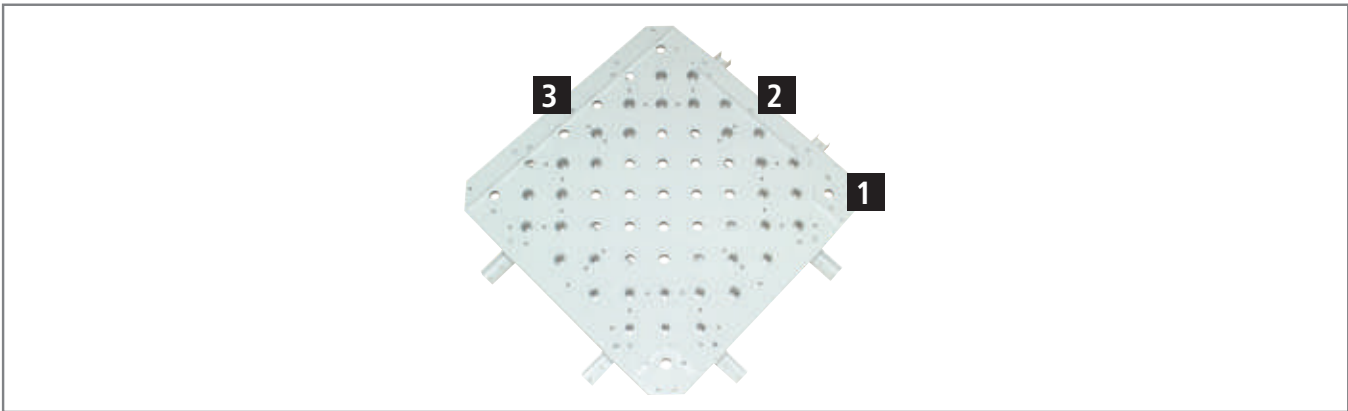
Stopper for workpiece carrier rail

Item no.
07.60.02



Beech multiplex workpiece carrier

Item no.	Dimensions in mm (WxDxH)
07.60.10	384 x 384 x 12
07.60.11	500 x 500 x 12
07.60.12	616 x 616 x 12



Guide bracket, pair

Item no.	Dimensions in mm
07.60.40	For workpiece carrier 384
07.60.42	For workpiece carrier 500
07.60.44	For workpiece carrier 616



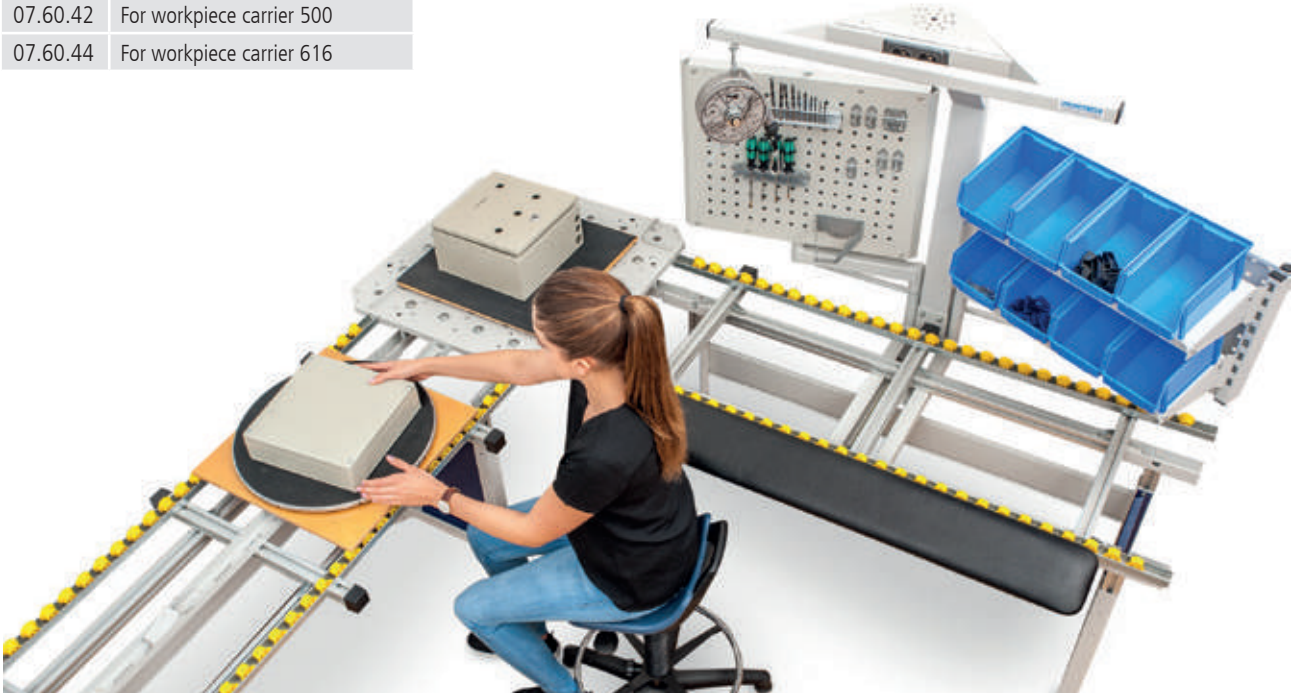
End stop

Item no.	Dimensions in mm (WxDxH)
07.60.46	373 x 20 x 20



Guide rail

Item no.	Dimensions in mm
07.60.48	700





ROLLER CONVEYOR SYSTEMS

The conveying elements are standardised to optimise the internal material flow. With the tried-and-tested roller and wheel conveyor programme, we develop optimal concepts in unit load conveyor technology and realise projects in the areas of: Production, incoming goods, warehouse with picking zones, dispatch, the transport of light products, such as cardboard boxes, is mastered by the conveyor system as well as the handling of heavier goods, which can be moved gently on medium-heavy roller conveyors.

ACCORDION ROLLER CONVEYORS

Flared conveyors are independent, flexible conveyor sections. They are used where stationary conveyor sections cannot be installed and packages are handled manually. Thanks to their high degree of flexibility, they can be used as curves or even S-curves. Furthermore, their conveying length is variable (extendable), and they can be moved using steering casters.

- Also galvanised steel tube, Ø 50 x 1.5 mm, on request
- The centre distance is 55 - 130 mm, depending on the extended length
- Height-adjustable, 700 - 1100 mm

- Also ball bearing-mounted plastic rollers, Ø 48 mm, on request (without surcharge)
- The centre distance is 32 - 130 mm, depending on the extended length
- Height-adjustable, 700 - 1100 mm



Accordion roller conveyors with conveyor rollers made of blue plastic tube



Accordion small roller conveyors with ball bearing-mounted and galvanised steel rollerverzinkten Stahlröllchen

SMALL ROLLER CONVEYORS

For transporting small, light-weight conveyed goods. The conveyed goods should always lie over at least 3 conveyor rollers. Consequently, length and diameter of the smallest conveyed good:
 min. 75 mm with a centre distance of 25 mm,
 min. 115 mm with a centre distance of 37.5 mm.
 The roller conveyor width determines the inner clearance between the roller conveyor frames. The conveyor rollers protrude over the upper edge of the frame.

Conveyor rollers \varnothing 20 mm or \varnothing 30 mm



LIGHT ROLLER CONVEYORS

Light roller conveyors are used for transporting piece goods of a weight that can still be handled manually. The conveyed goods should always lie over at least 3 conveyor rollers (check centre distance). The roller conveyor width determines the inner clearance between the roller conveyor frames. The load capacity of the conveyors depends on, among other things, the roller conveyor width, and the roller and support spacing. With plastic rollers, the weight of the conveyed good should be no more than 20-25 kg. Supports are placed with a spacing of up to 2 m.



MEDIUM-WEIGHT ROLLER CONVEYORS

For applications where light roller conveyors reach their load limits and heavy-duty roller conveyors would be oversized.

They are used for loads of up to approx. 150 - 200 kg/m, irrespective of the roller conveyor width, and the roller and support spacing. For multi-segment sections, the individual conveyors are connected via the supports (no track connectors).





Heavy duty tables - The strongest**Page 380**

Other workstation systems**Page 402**

Worktops**Page 422**

ESD**Page 432**

Mobile logistics systems**Page 456**

Wing and sliding door wardrobes**Page 530**

Chairs and shelves**Page 552**

Wardrobes**Page 578**



Heavy load tables - the strongest ones





powerline C - height-adjustable heavy load tables with C-foot

Page 382



powerline C - basic frame and basic table with C-foot

Page 384



powerline C - combinations from practice with C-foot

Page 386



powerline C - height-adjustable heavy load tables with 4-foot

Page 388



powerline C - basic frame and basic table with 4-foot

Page 390



powerline C - combinations from practice with 4-foot

Page 392



hydline combinations from practice

Page 396



hydline

Page 394



Other heavy load tables

Page 400

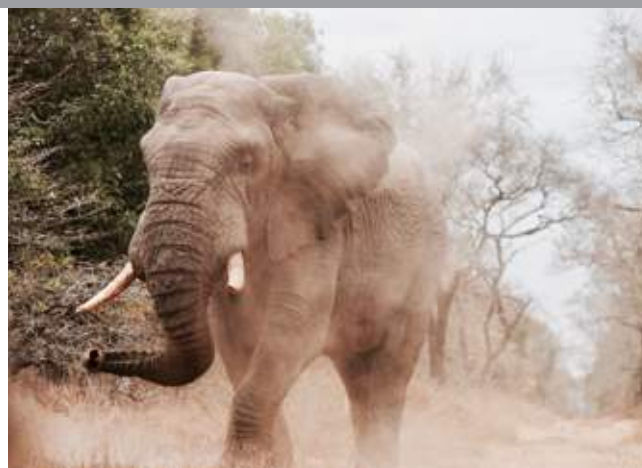
powerline C



powerline C - the strong one

Thanks to its electric height adjustment, the **powerline** quietly moves to the required working height in a range of 705-1155 mm with a vertical travel speed of 9mm/s without load. Thus, the powerline creates a flexible seated/standing workplace without long waiting times. At the same time, the quiet worktable has an extremely high load capacity. The C-foot variant bears up to 600 kg.

- Feet with levelling
- **Drive:** Internal DC drive with built-in end switches and two synchronous Hall effect sensors
- **Connection:** 230 V | **Drive motor:** 24 V



Features at a glance	
Retrofittable	Multi-board setup or stand and optional accessories such as foot switch
Energy	Direct supply of lighting, energy, compressed air
Frame widths	1250, 1500, 2000 mm
Frame depth	750 mm
Travel speed	9 mm/s without load
Work height without worktop	705 – 1155 mm Vertical travel: 450 mm
Height adjustment	Electric height adjustment
Frame design	C-foot
Load capacity	600 kg with even load

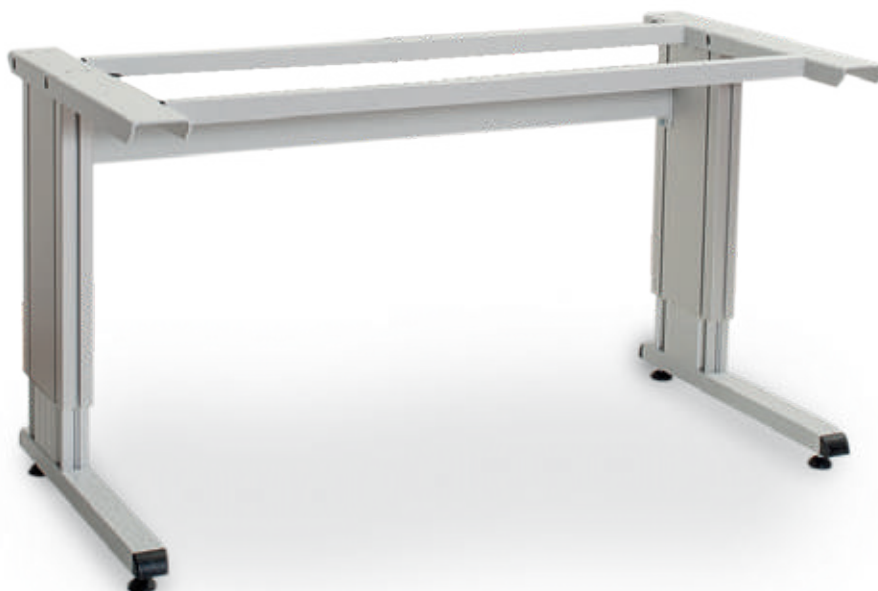
FRAME DESIGN:



HEIGHT ADJUSTMENT:



Electric height adjustment



powerline C basic frame

- Equipped with up/down manual switch for height adjustment as standard
- Lifting columns made of aluminium
- Frame and feet made of rectangular tube and 5 mm thick sheet steel

Item no.	Dimensions in mm (WxDxH)
CF.125.75	1250 x 750 x 705 – 1155
CF.150.75	1500 x 750 x 705 – 1155
CF.200.75	2000 x 750 x 705 – 1155



powerline C basic table

- Beech multiplex top 40 mm
- Equipped with manual switch for height adjustment as standard
- Lifting columns made of aluminium
- Frame and feet made of rectangular tube and 5 mm thick sheet steel

Item no.	Dimensions in mm (WxDxH)
CF.125.75BM	1250 x 750 x 745 – 1195
CF.150.75BM	1500 x 750 x 745 – 1195
CF.200.75BM	2000 x 750 x 745 – 1195

**Beech multiplex workbench top**

- Glue laminated, oiled
- Waterproof
- Dampened according to DIN 68705

Panel thickness (mm)	40	50
Dimensions in mm (WxD)	Item no.	Item no.
1250 x 750	03.125.40	03.125.50
1500 x 750	03.15.40	03.15.50
2000 x 750	03.20.40	03.20.50

**Red beech workbench top**

- Strip laminated
- Finger jointed
- Glued wood panel with distinctive grain

Panel thickness (mm)	40	50
Dimensions in mm (WxD)	Item no.	Item no.
1250 x 750	03.125.40RB	03.125.50RB
1500 x 750	03.15.40RB	03.15.50RB
2000 x 750	03.20.40RB	03.20.50RB

**MDF worktop with 0.7 mm HPL coat**

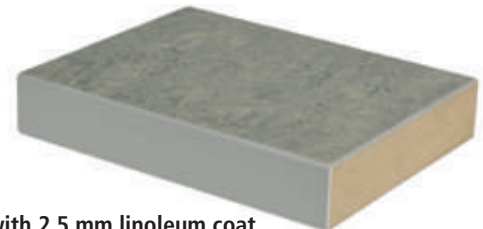
- 4-sided, ABS edging
- Heat and light resistant
- Stain-resistant, easy to clean and to disinfect
- Solvent resistant and largely chemical resistant

Panel thickness (mm)	40	50
Dimensions in mm (WxD)	Item no.	Item no.
1250 x 750	H03.125.40	H03.125.50
1500 x 750	H03.15.40	H03.15.50
2000 x 750	H03.20.40	H03.20.50

**Chipboard panel directly coated with melamine resin**

- 4-sided, ABS edging
- Chipboard carrier plate with direct coating
- Abrasion-resistant and easy to care for surface

Panel thickness (mm)	40	50
Dimensions in mm (WxD)	Item no.	Item no.
1250 x 750	07.M12575.40	07.M12575.50
1500 x 750	07.M1575.40	07.M1575.50
2000 x 750	07.M2075.40	07.M2075.50

**MDF worktop with 2.5 mm linoleum coat**

- 4-sided ABS edging
- Antistatic
- Scratch resistant
- Made from purely natural raw materials, thus linoleum is very environmentally friendly in production, use and disposal
- Areas of application: technical, electrical and chemical works

Panel thickness (mm)	40	50
Dimensions in mm (WxD)	Item no.	Item no.
1250 x 750	L03.125.40	L03.125.50
1500 x 750	L03.15.40	L03.15.50
2000 x 750	L03.20.40	L03.20.50

**MDF worktop with 2.5 mm Trovidur coat**

- 4-sided ABS edging
- Low flammability surface
- Very good electrical insulating properties
- High resistance to acids, lyes and salt solutions
- Areas of application: Chemical tank and plant construction, electrical industry, construction industry

Panel thickness (mm)	40	50
Dimensions in mm (WxD)	Item no.	Item no.
1250 x 750	T03.125.40	T03.125.50
1500 x 750	T03.15.40	T03.15.50
2000 x 750	T03.20.40	T03.20.50

Ergonomics at the workplace

A workplace that individually adapts to the respective worker's height. Optimal working conditions for a seated and standing workplace. Beech multiplex worktop 40 mm.



You can find further accessories on/from page 398



powerline C heavy load table with stand

- powerline heavy load table electrically height-adjustable
- Stand structure
- 1x pivot arm with perforated/slotted walls
- 1x pivot arm with shelf and ribbed rubber mat
- 1x halogen lamp
- 2x earthed sockets
- 1x 1/4" compress air connection

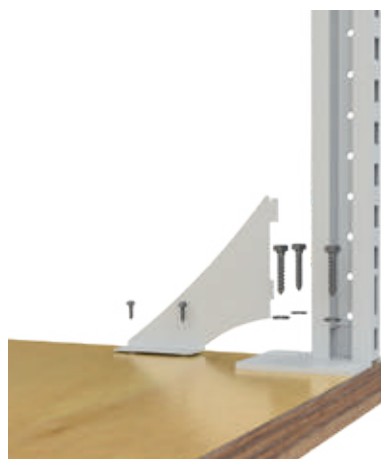
Item no.	Dimensions in mm (WxDxH)
CF.125.75-2	1250 x 750 x 745 – 1195
CF.150.75-2	1500 x 750 x 745 – 1195
CF.200.75-2	2000 x 750 x 745 – 1195

powerline C heavy load table with multi-board setup

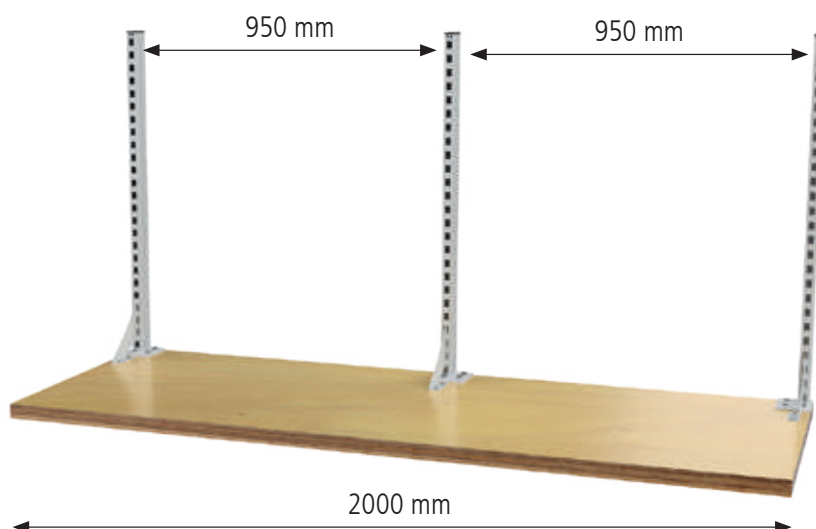
- 2x support column
- 1x energy bar with 3x earthed sockets and on/off switch
- 1x perforated wall
- 1x magnetic board
- 1x shelf, 320 mm
- 1x overhead frame
- 1x equipment rail
- 1 x LED illumination 28.9 W, 1290 lx

Item no.	Dimensions in mm (WxDxH)
CF.125.75-1	1250 x 750 x 745 – 1195
CF.150.75-1	1500 x 750 x 745 – 1195
CF.200.75-1*	2000 x 750 x 745 – 1195

Supplied without hooks, boxes and decoration



- Table width 2000 mm
- Superstructure width centre-centre 2 x 950 mm
- 2x support column left
- 2x support column right



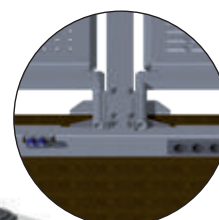
*Three support columns are required for a table width of 2000 mm.
The number of perforated walls, magnetic boards and shelves doubles.



Attachments for the stand

- Attachment for powerline, for example
- Screwed to the worktop (40 mm)

Item no.
07.40.016



Multiple socket bar, single

- With 4 sockets
- Attachment under the worktop, for example

Item no.	Designation
07.40.03	840 x 110 x 45 Multiple socket bar
07.40.04	1/4" compressed air connection

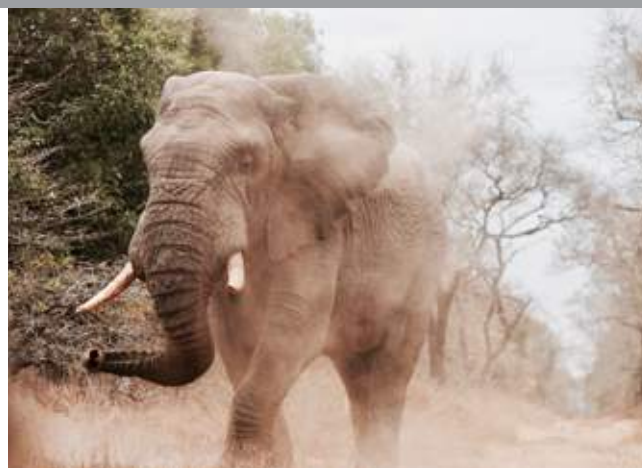
powerline 4



powerline 4 - the strongest one

Thanks to its electric height adjustment, the **powerline** moves virtually silently to the required working height in a range of 705-1155 mm. The vertical travel speed is 9 mm/s without load. Thus, the powerline creates a flexible seated/standing workplace without long waiting times. The 4-foot variant boasts a load capacity of up to 900 kg.

- Feet with levelling
- **Drive:** Internal DC drive with built-in end switches and two synchronous Hall effect sensors
- **Connection:** 230 V | **Drive motor:** 24 V



Features at a glance

Retrofittable	Multi-board setup or stand and optional accessories such as foot switch
Energy	Direct supply of lighting, energy, compressed air
Frame widths	1500, 2000 mm
Frame depth	900 mm
Travel speed	9 mm/s without load
Work height without worktop	705 – 1155 mm Vertical travel: 450 mm
Height adjustment	Electric height adjustment
Frame design	4-foot
Load capacity	900 kg with even load

FRAME DESIGN:



HEIGHT ADJUSTMENT:



Electric height adjustment



powerline 4 basic frame

- Equipped with manual switch for height adjustment as standard
- Lifting columns made of aluminium
- Frame and feet made of rectangular tube and 5 mm thick sheet steel

Item no.	Dimensions in mm (WxDxH)
4F.150.75	1500 x 750 x 705 – 1155
4F.150.90	1500 x 900 x 705 – 1155
4F.200.75	2000 x 750 x 705 – 1155
4F.200.90	2000 x 900 x 705 – 1155



powerline 4 basic table

- Beech multiplex top 40 mm
- Equipped with manual switch for height adjustment as standard
- Lifting columns made of aluminium
- Frame and feet made of rectangular tube and 5 mm thick sheet steel

Item no.	Dimensions in mm (WxDxH)
4F.150.75BM	1500 x 750 x 745 – 1195
4F.150.90BM	1500 x 900 x 745 – 1195
4F.200.75BM	2000 x 750 x 745 – 1195
4F.200.90BM	2000 x 900 x 745 – 1195

**Beech multiplex workbench top**

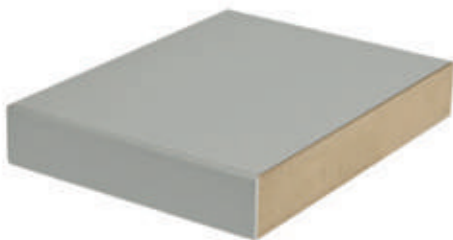
- Glue laminated, oiled
- Waterproof
- Dampened according to DIN 68705

Panel thickness (mm)	40	50
Dimensions in mm (WxD)	Item no.	Item no.
1500 x 750	03.15.40	03.15.50
1500 x 900	03.1590.40	03.1590.50
2000 x 750	03.20.40	03.20.50
2000 x 900	03.2090.40	03.2090.50

**Red beech workbench top**

- Strip laminated
- Finger jointed
- Glued wood panel with distinctive grain

Panel thickness (mm)	40	50
Dimensions in mm (WxD)	Item no.	Item no.
1500 x 750	03.15.40RB	03.15.50RB
1500 x 900	03.1590.40RB	03.1590.50RB
2000 x 750	03.20.40RB	03.20.50RB
2000 x 900	03.2090.40RB	03.2090.50RB

**MDF worktop with 0.7 mm HPL coat**

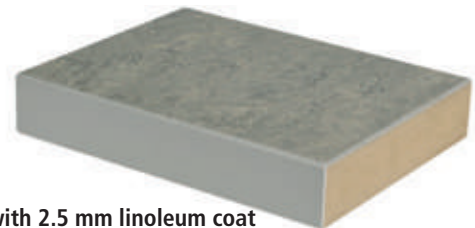
- 4-sided, ABS edging
- Heat and light resistant
- Stain-resistant, easy to clean and to disinfect
- Solvent resistant and largely chemical resistant

Panel thickness (mm)	40	50
Dimensions in mm (WxD)	Item no.	Item no.
1500 x 750	H03.15.40	H03.15.50
1500 x 900	H03.1590.40	H03.1590.50
2000 x 750	H03.20.40	H03.20.50
2000 x 900	H03.2090.40	H03.2090.50

**Chipboard panel directly coated with melamine resin**

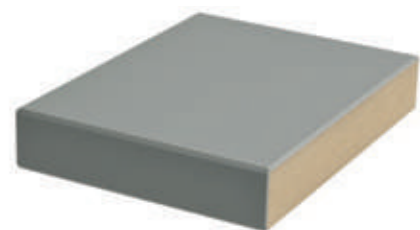
- 4-sided, ABS edging
- Chipboard carrier plate with direct coating
- Abrasion-resistant and easy to care for surface

Panel thickness (mm)	40	50
Dimensions in mm (WxD)	Item no.	Item no.
1500 x 750	07.M1575.40	07.M1575.50
1500 x 900	07.M1590.40	07.M1590.50
2000 x 750	07.M2075.40	07.M2075.50
2000 x 900	07.M2090.40	07.M2090.50

**MDF worktop with 2.5 mm linoleum coat**

- 4-sided ABS edging
- Antistatic
- Scratch resistant
- Made from purely natural raw materials, thus linoleum is very environmentally friendly in production, use and disposal
- Areas of application: technical, electrical and chemical works

Panel thickness (mm)	40	50
Dimensions in mm (WxD)	Item no.	Item no.
1500 x 750	L03.15.40	L03.15.50
1500 x 900	L03.1590.40	L03.1590.50
2000 x 750	L03.20.40	L03.20.50
2000 x 900	L03.2090.40	L03.2090.50

**MDF worktop with 2.5 mm Trovidur coat**

- 4-sided ABS edging
- Low flammability surface
- Very good electrical insulating properties
- High resistance to acids, lyes and salt solutions
- Areas of application: Chemical tank and plant construction, electrical industry, construction industry

Panel thickness (mm)	40 mm	50
Dimensions in mm (WxD)	Item no.	Item no.
1500 x 750	T03.15.40	T03.15.50
1500 x 900	T03.1590.40	T03.1590.50
2000 x 750	T03.20.40	T03.20.50
2000 x 900	T03.2090.40	T03.2090.50

Ergonomics at the workplace

A workplace that individually adapts to the respective worker's height. Optimal working conditions for a seated and standing workplace. Beech multiplex worktop 40 mm.



*Three support columns are required for a table width of 2000 mm. The number of perforated walls, magnetic boards and shelves doubles.

You can find further accessories on/from page 298



powerline 4 with multi-board setup

- 2x support column
- 1x energy bar with 3x earthed sockets and on/off switch
- 1x perforated wall
- 1x magnetic board
- 1x shelf, 320 mm
- 1x overhead frame
- 1x equipment rail
- 1 x LED illumination 28.9 W, 1290 lx

Item no.	Dimensions in mm (WxDxH)
4F.150.75-1	1500 x 750 x 745 – 1195
4F.150.90-1	1500 x 900 x 745 – 1195
4F.200.75-1*	2000 x 750 x 745 – 1195
4F.200.90-1*	2000 x 900 x 745 – 1195



powerline 4 with multi-board setup

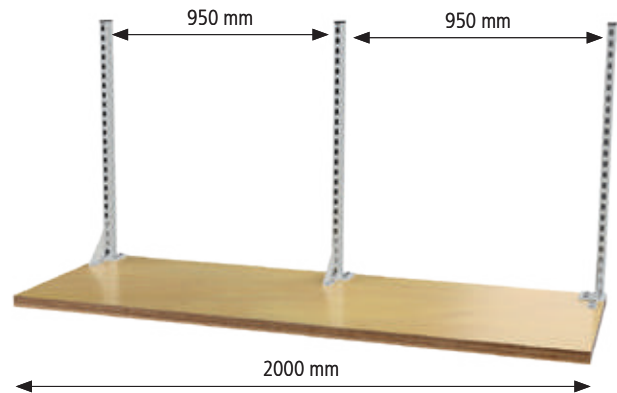
- 2x support column
- 1x energy bar with 3x earthed sockets and on/off switch
- 2x 1/4" compressed air connection
- 1x shelf, 220 mm
- 1x perforated wall
- 1x magnetic board
- 1x pivot arm with platform
- 1x overhead frame
- 1x equipment rail
- 1 x LED illumination 28.9 W, 1290 lx

Item no.	Dimensions in mm (WxDxH)
4F.150.75-2	1500 x 750 x 745 – 1195
4F.150.90-2	1500 x 900 x 745 – 1195
4F.200.75-2*	2000 x 750 x 745 – 1195
4F.200.90-2*	2000 x 900 x 745 – 1195

Supplied without hooks, boxes and decoration



*Three support columns are required for a table width of 2000 mm. The number of perforated walls, magnetic boards and shelves doubles.



powerline 4 with multi-board setup

- 2x support column
- 1x energy bar with 3x earthed sockets and on/off switch
- 3x shelf, 220 mm depth
- 1x shelf, 320 mm depth
- 1x overhead frame
- 1x equipment rail
- 1 x LED illumination 28.9 W, 1290 lx

Item no.	Dimensions in mm (WxDxH)
4F.150.75-3	1500 x 750 x 745 – 1195
4F.150.90-3	1500 x 900 x 745 – 1195
4F.200.75-3*	2000 x 750 x 745 – 1195
4F.200.90-3*	2000 x 900 x 745 – 1195

powerline 4 with multi-board setup

- 2x support column
- 1x energy bar with 3x earthed sockets and on/off switch
- 1x perforated wall
- 1x magnetic board
- 2x shelf, 320 mm
- 1x overhead frame
- 2x equipment rail
- 1 x LED illumination 28.9 W, 1290 lx
- 1x carriage

Item no.	Dimensions in mm (WxDxH)
4F.150.75-4	1500 x 750 x 745 – 1195
4F.150.90-4	1500 x 900 x 745 – 1195
4F.200.75-4*	2000 x 750 x 745 – 1195
4F.200.90-4*	2000 x 900 x 745 – 1195

Supplied without hooks, boxes and decoration



hydline heavy load table

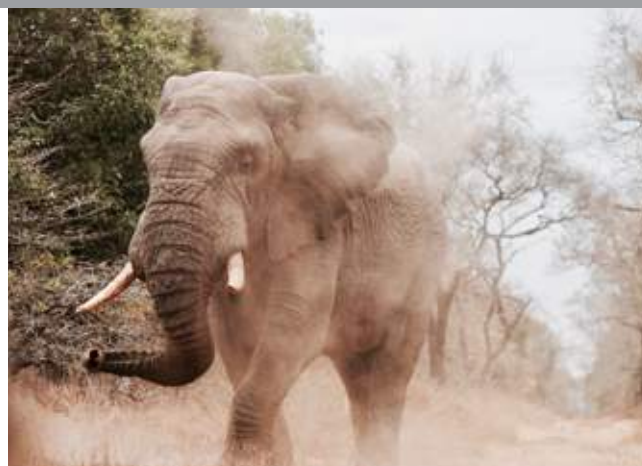
Item no.	Dimensions in mm (WxDxH)	Description
03.15.40.07	1500 x 750 x 700 – 1100	Complete set, as illustrated, but without decoration, spring balancer, boxes and tools, without lighting
03.15.40HVS	1500 x 750 x 700 – 1100	hydline heavy load table with electric height adjustment
07.40.016		Attachments for the stand, screwed to the worktop (40 mm)
07.40.06		Stand structure with 2x earthed sockets and 1x halogen lightning 35W
07.40.07		Surcharge for 1/4" compressed air distributor
07.98.10	655 x 45 x 500	Pivot arm with perforated/slotted wall
07.00.30	740 x 410 x 430	Footrest, with individually adjustable height and incline
05.96.09	520-710	PU standing aid, blue, large PU seat, blue, 370 mm wide Seat incline adjustment, 7.5° forwards and backwards, seat height adjustment with gas spring, stable plastic-cruciform base, Ø 630 mm
04.10.05V-1	555 x 736 x 1005	Mobile drawer cabinet, 2x 100 mm drawer, 2x 150 mm drawer, 1x 200 mm drawer, drawers with full pull-out 100 %, load capacity 100 kg, central locking with individual pull-out lock, double locking of the drawers with single locks, 2x steering casters with locks, 2x fixed casters Ø 125 mm, beech multiplex worktop 25 mm

hydline - the quickest of the strong ones

The **hydline** heavy load table moves to your required working height at a speed of 15 mm/s. However, this table is not only quick, but also strong. The hydline has a load capacity of up to 600 kg.

Thanks to the hydraulic drive, it has a long service life and will be your trusty companion for a long time.

- Stepless height adjustment of the drive
- Very large forces and torques
- Pressure relief valve for reliable and quick-acting overload protection
- High power density in comparison with electric motors
- Implementation of linear drive elements working in parallel
- Long service life thanks to the hydraulic drive
- High positioning accuracy
- Uniform movement



Features at a glance	
Retrofittable	Multi-board setup or stand and optional accessories such as foot switch
Energy	Direct supply of lighting, energy, compressed air
Frame widths	1500, 2000 mm
Frame depth	750 mm
Travel speed	15 mm/s without load
Work height without worktop	705 – 1155 mm Vertical travel: 450 mm
Height adjustment	Two different types: Crank adjustment, electric height adjustment
Frame design	H-foot
Load capacity	350-600 kg with uniform load depending on height adjustment



FRAME DESIGN:



HEIGHT ADJUSTMENT:



Crank adjustment



Electric height adjustment



Ergonomics at the workplace

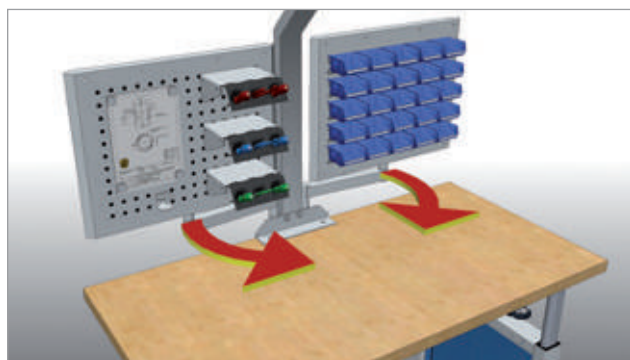
A workplace that individually adapts to the respective worker's height. Optimal working conditions for a seated and standing workplace. Beech multiplex worktop 40 mm.



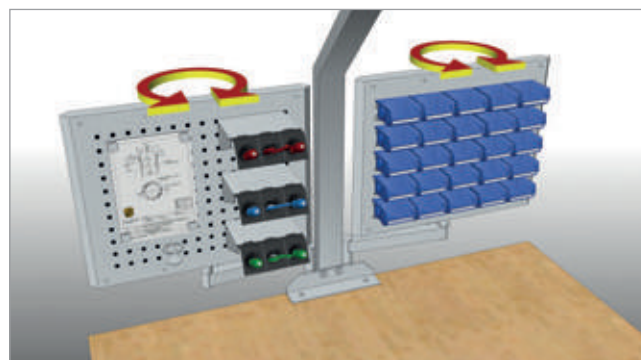
Multi-board setup

- 2x support column
- 1x overhead frame
- 1x equipment rail
- 1x LED illumination 28.9 W, 1290 lx
- 1x energy bar with 3x earthed sockets and on/off switch
- 2x 1/4" compressed air connection
- 1x perforated wall
- 1x magnetic board
- 1x shelf, 320 mm

Item no.	Dimensions in mm (WxDxH)	Description
03.900.15.20	1500 x 750 x 1250	Multi-board setup
03.15.40HV	1500 x 750 x 700 – 1100	hydline heavy load table with crank adjustment, 350 kg load capacity
03.15.40HVS	1500 x 750 x 700 – 1100	hydline heavy load table height-adjustable with electric control, 600 kg load capacity



Adjustable pivot arms ensure the free configuration of handling areas



360° pivot arm inserts, which are attached directly to the stand, offer maximum flexibility for the work to be carried out.

You can find
multi-board setups on/
from page 265

New

Floor anchorage

- For fixing the workbench to the floor
- 4 pieces

Item no.

03.00.34



hL

1

hydline heavy load table

- Crank adjustment
- Maximum load capacity 350 kg

Item no.	Dimensions in mm (WxDxH)	Tabletop	Thickness in mm
03.15.40HV	1500 x 750 x 700 – 1100	Multiplex	40
03.15.50HV	1500 x 750 x 700 – 1100	Multiplex	50
H03.15.40HV	1500 x 750 x 700 – 1100	MDF – HPL	40
H03.15.50HV	1500 x 750 x 700 – 1100	MDF – HPL	50
03.20.40HV	2000 x 750 x 700 – 1100	Multiplex	40
03.20.50HV	2000 x 750 x 700 – 1100	Multiplex	50
H03.20.40HV	2000 x 750 x 700 – 1100	MDF – HPL	40
H03.20.50HV	2000 x 750 x 700 – 1100	MDF – HPL	50



hL

2

hydline heavy load table

- Hydraulically height-adjustable with electric control
- Maximum load capacity 600 kg

Item no.	Dimensions in mm (WxDxH)	Tabletop	Thickness in mm
03.15.40HVS	1500 x 750 x 700 – 1100	Multiplex	40
03.15.50HVS	1500 x 750 x 700 – 1100	Multiplex	50
H03.15.40HVS	1500 x 750 x 700 – 1100	MDF – HPL	40
H03.15.50HVS	1500 x 750 x 700 – 1100	MDF – HPL	50
03.20.40HVS	2000 x 750 x 700 – 1100	Multiplex	40
03.20.50HVS	2000 x 750 x 700 – 1100	Multiplex	50
H03.20.40HVS	2000 x 750 x 700 – 1100	MDF – HPL	40
H03.20.50HVS	2000 x 750 x 700 – 1100	MDF – HPL	50



Freely adjustable system lights, which are attached directly to the stand.



Sockets, compressed air connections and a halogen lamp are integrated into the stand. This saves the space an additional energy bar would require.



You can find further accessories on/from page 284



Attachments for the stand

- Screwed to the worktop (40 mm)

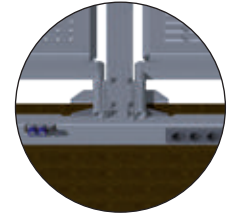
Item no.
07.40.016



Stand

- For structures with 2x earthed sockets and 1x halogen lightning 35 W

Item no.	Design
07.40.06	Standard
07.40.07	Surcharge for 1/4" compressed air distributor



Multiple socket bar, single

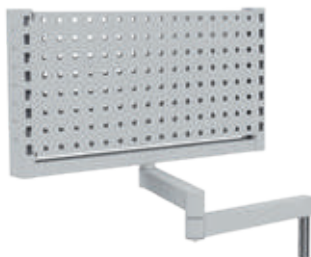
- With 4 sockets
- Attachment under the worktop, for example

Item no.	Designation
07.40.03	840 x 110 x 45 Multiple socket bar
07.40.04	1/4" compressed air connection



Please note:

- The stand or the attachment for the stand is required for the pivot arms
- Load capacity 30 kg



Pivot arm with pivot frame and perforated walls

- With double-sided perforated wall

Item no.	Dimensions in mm (WxDxH)
07.98.09	680 x 60 x 350



Pivot arm with perforated/slotted wall

- For hooks and small parts boxes
- 1st side with slotted wall | 2nd side with perforated wall

Item no.	Dimensions in mm (WxDxH)
07.98.10	655 x 45 x 500



Example application

Open fronted storage bins

- 15 pieces

Item no.	Dimensions in mm (WxDxH)
07.45.26	—



Pivot arm with shelf

- Beech multiplex 25 mm

Item no.	Dimensions in mm (WxD)
07.98.12	600 x 350



Pivot arm with depositing tray

Item no.	Dimensions in mm (WxDxH)
07.98.04	400 x 300 x 48



Pivot arm with document holder A4

- With raised lateral and bottom edge

Item no.	Dimensions in mm (WxDxH)
07.98.05	215 x 35 x 330

**Carriage**

Item no.	Designation
03.900.01	—

**Spring balancer**

- For all kinds of portable equipment and tools
- 1600 mm pull-out

Item no.	Load capacity in kg
03.900.44	0.4 – 1.0
03.900.45	1.0 – 2.0
03.900.46	2.0 – 3.0

**Spring balancer with hose**

- Max. pressure 8 bar
- Airflow 370 l/min
- Both sides R 1/4"
- 1400 mm pull-out

Item no.	Load capacity in kg
03.900.60	0.4 – 0.8
03.900.61	0.8 – 1.5
03.900.62	1.2 – 2.5

**Bag holder**

- For mounting on the worktop

Item no.	Dimensions in mm (WxDxH)
03.900.41	40 x 30 x 70

**Bottle holder**

- For mounting on the perforated wall and the worktop

Item no.	Dimensions in mm
03.900.43	Ø 90 x 70

**Roll holder**

- For mounting on the perforated wall and the worktop

Item no.	Dimensions in mm (WxDxH)
03.900.42	200 x 95 x 71

**Range of hooks, 10 parts**

- 7x tool holder with inclined end
- 2x double tool holder
- 1x tool clamp

Item no.
03.87.395-10

**Double tool holder with slanted hook ends**

- Ø 6 mm

Item no.	Dimension in mm (W)
03.87.322	50
03.87.323	75
03.87.324	150

**Depositing box, small**

Item no.	Dimensions in mm (WxDxH)
03.87.430	250 x 80 x 35

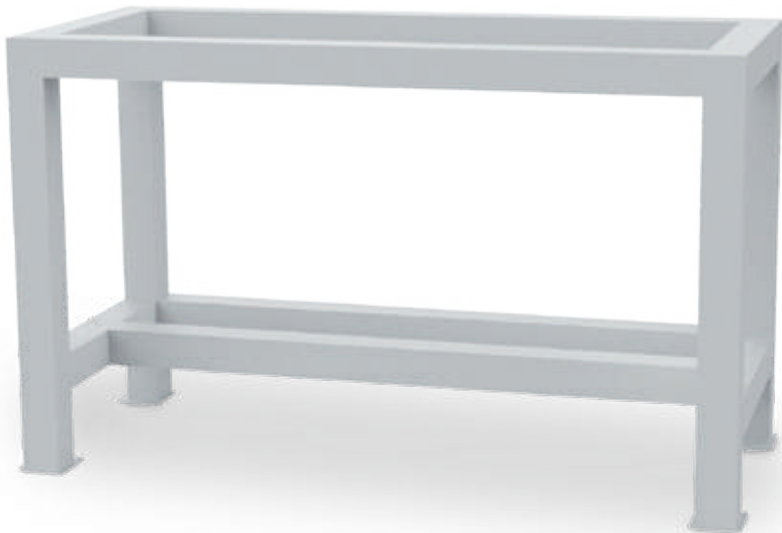


Other heavy load tables

Heavy load table

- Very stable steel tube construction, 80 x 80 x 3 mm
- Completely welded
- 2500 kg total load capacity
- Frame height 919 mm

You can find worktops
on/from page 422



Heavy load table frame

- Frame without worktop

Item no.	Dimensions in mm (WxDxH)
03.10SLT1.6	1000 x 650 x 919
03.15SLT1.6	1500 x 650 x 919
03.20SLT1.6	2000 x 650 x 919



Heavy load table

- Beech multiplex worktop 50 mm

Item no.	Dimensions in mm (WxDxH)
03.10SLT0.6	1000 x 750 x 969
03.15SLT0.6	1500 x 750 x 969
03.20SLT0.6	2000 x 750 x 969

Height-adjustable heavy load table

Heavy load tables

- Stable U-profile construction, 75 x 50 x 2 mm
- Welded and bolted with gusset plates for stiffening
- For assembly, workshop and shipping
- 1000 kg total load capacity
- Height-adjustable from 694 to 1044 mm on a grid of 25 mm

You can find worktops
on/from page 422

**Height-adjustable heavy load table frame**

- Frame without worktop
- Height-adjustable on a grid of 25 mm

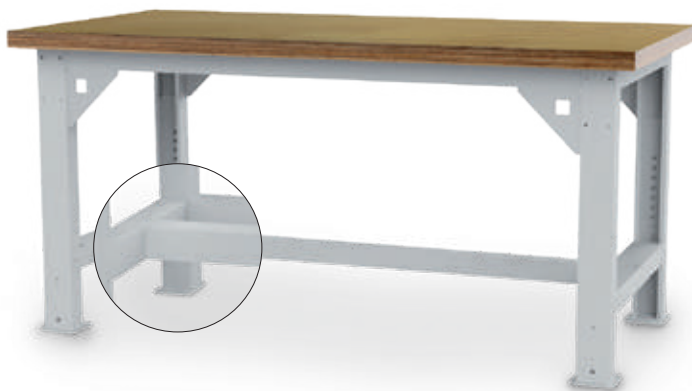
Item no.	Dimensions in mm (WxDxH)
03.10.001.6	1000 x 650 x 694 – 1044
03.15.001.6	1500 x 650 x 694 – 1044
03.20.001.6	2000 x 650 x 694 – 1044

New

**Wooden shelf**

- Beech multiplex

Item no.	Dimensions in mm (WxDxH)
03.10.001FB	900 x 550 x 25
03.15.001FB	1400 x 550 x 25
03.20.001FB	1900 x 550 x 25

**Height-adjustable heavy load table**

- Beech multiplex worktop 40 mm
- Height-adjustable on a grid of 25 mm

Item no.	Dimensions in mm (WxDxH)
03.10.000.6	1000 x 750 x 734 – 1084
03.15.000.6	1500 x 750 x 734 – 1084
03.20.000.6	2000 x 750 x 734 – 1084

**Mobile add-on for height-adjustable heavy load table**

- Retrofittable
- Stable U-profile construction
- Height-adjustable on a grid of 25 mm
- Total height of heavy load table incl. casters: 884 – 1236 mm
- Load capacity 450 kg
- 4x steering caster, Ø 125 mm with lock



Item no.	Dimensions in mm (WxDxH)
03.90.HVMOB	1000 x 750 x 150

Delivered unassembled with assembly instructions



Other workplace systems

- they can handle it





New

Packing tables

Page 404



Cutting stands

Page 418



Stable table design with levelling

Page 419



workalu

Page 420





Packing tables - workplace systems

Packing tables

- Stable table design with levelling
- 19 mm worktop with melamine resin coating
- Surface loading up to 100 kg
- Shelves of table extensions made of galvanised sheet steel
- Cutting device with exchangeable cartridge
- Titanium coated blade
- High functionality
- Selected accessories



Pos.	Item no.	Dimensions in mm (W x D x H)	Description
1	03.PT01	2000 x 800 x 850	Packing table 2000, 19 mm worktop with melamine resin coating, max. surface loading up 100 kg
2	03.700030	40 x 40 x 1266	Mounting beam, in pairs
3	03.PT06	1430 x 400 x 58	Tray made of galvanised sheet steel, for mounting between the beams
4	03.700050	1420 x 300 x 400	Add-on store made of galvanised sheet steel incl. 8x dividers, max. surface loading 50 kg
5	03.700140	1425 x 20 x 20	Axle between beams, for holding rolls, max. load capacity 20 kg
6	03.700120	513 x 530 x 160	Drawer made of sheet steel, lockable, load capacity 12.5 kg
7	03.PT13	1500 x 175 x 20	Attachment cutting device, cutting width 1250 mm, incl. axle set
8	03.PT14	600 x 600 x 750	Side table, max. Area load 100 kg
9	03.700080	1415 x 300 x 415	Base box store, incl. 8x divider, mobile with 4x lockable steering caster
10	03.897052	500 x 400	Digital table scales for weighings not subject to statutory calibration
no fig.	03.PT02	1600 x 800 x 850	Packing table 1600, 19 mm worktop with melamine resin coating, max. surface loading up 100 kg
no fig.	03.PT05	1435 x 253 x 114	Form tray made of galvanised sheet steel
no fig.	03.PT08	1525 x 650 x 19	Intermediate shelf, wood, max. surface loading 50 kg
no fig.	03.PT12	200 x 100 x 100	Monitor mount, VESA 75/100 mm
no fig.	03.PT17	600 x 490 x 675	Drawer unit incl. 4x drawer, mobile
no fig.	03.PT509201	640 x 728 x 120	Keyboard and mouse tray with articulated arm



Complete packing station with 1600 mm wide tabletop

- Form tray, 230 mm depth
- Box store with 6x divider
- Stable table with steel construction
- 300 kg surface loading
- Light grey 30 mm worktop with melamine resin coating
- Steel parts powder-coated, RAL 7016 Anthracite grey and RAL 3003 Ruby red
- Intermediate shelf (1145 x 650 x 19 mm)
- Steel drawer (520 x 500 x 150 mm), 12.5 kg load capacity

Item no.	Cutting width/dimensions in mm (W x D x H)
03.PT163001	1600 x 800 x 690 – 960



Complete packing station with 1600 mm wide tabletop

- Form tray, 230 mm depth
- Box store with 6x divider
- Stable table with steel construction
- 300 kg surface loading
- Light grey 30 mm worktop with melamine resin coating
- Steel parts powder-coated, RAL 7016 Anthracite grey and RAL 3003 Ruby red
- Cutting device, RAL 9007 Grey aluminium, with blade cartridge for paper and foils, cutting width 100 cm, axle set with cones and bearing shells

Item no.	Cutting width/dimensions in mm (W x D x H)
03.PT163002	1600 x 800 x 690 – 960



Packing tables - workplace systems

Packing tables



Crank adjustment



Electric height adjustment



Packing and worktable 1600/2000

- Stable steel construction, beams and feet made of square tube
- Foldable for transport, height adjustable from 690 to 960 mm as standard, melamine coated 30 mm tabletop
- Max. surface loading 300 kg
- Steel parts powder-coated, RAL 7016 Anthracite grey and RAL 3003 Ruby red
- Other versions with scales and EDP interface available

Pos.	Item no.	Dimensions in mm (W x D x H)	Design
1	03.PT163000	1600 x 800 x 690-960	Clamp fixing
	03.PT203000	2000 x 920 x 690-960	Clamp fixing
	03.PT163500	1600 x 800 x 710-960	Crank adjustment
	03.PT203500	2000 x 920 x 710-960	Crank adjustment
	03.PT163800	1600 x 800 x 710-960	Electric height adjustment
	03.PT203800	2000 x 920 x 710-960	Electric height adjustment

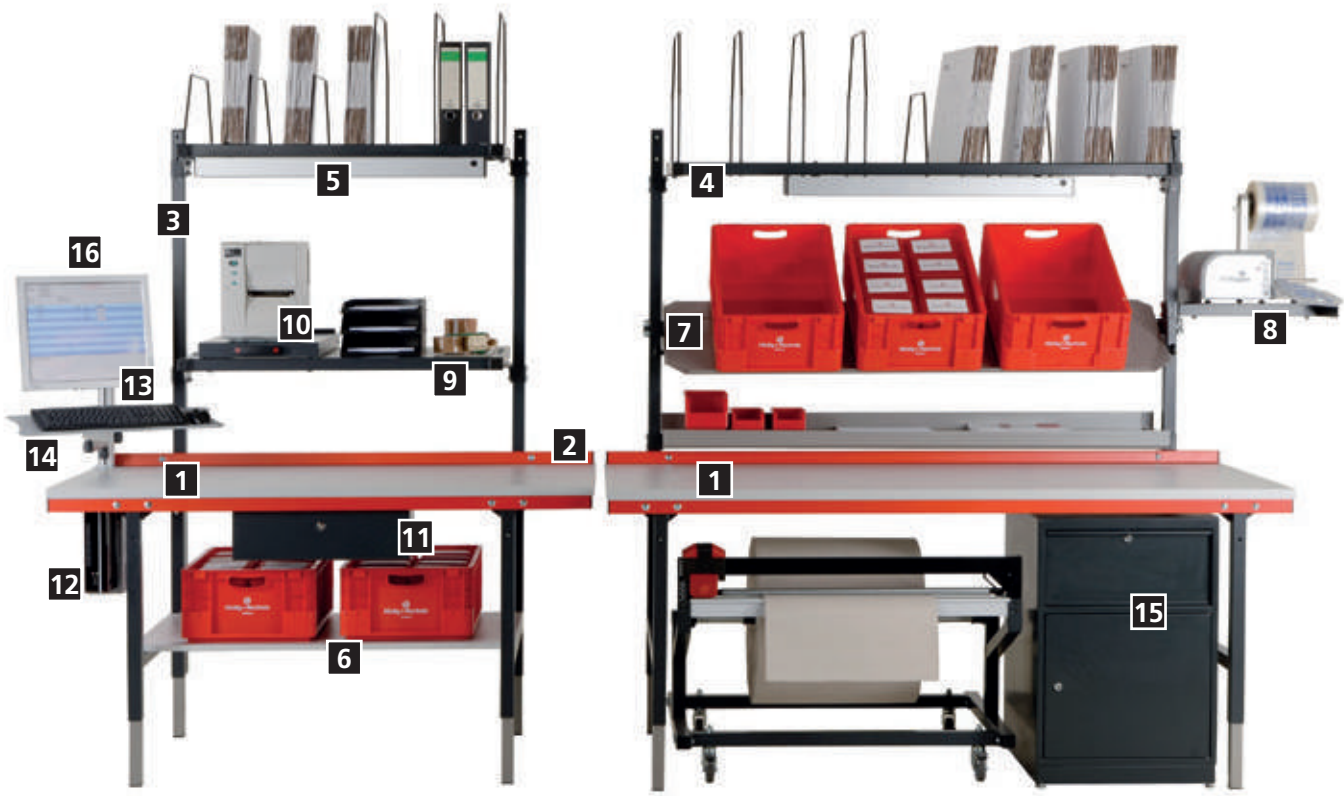
Accessories for table width 1600 mm

Pos.	Item no.	Dimensions in mm (W x D x H)	Description
2	03.PT166000	1600 x 40 x 40	Back board made of 40 x 40 mm square tube
4	03.PT1653	1015 x 600 x 400	Add-on store, dividers: 3x small divider, 3x large divider, flexible clamp mounting, max. surface loading 50 kg
	03.PT1653D	1015 x 600 x 400	Add-on store without dividers, e.g. for mounting of the printer pull-out, flexible clamp mounting, max. surface loading 50 kg
5	03.PT207004	661 x 51 x 54	Workplace lighting, LED with dimming function, rotatable, 21 W, 903 lux
	03.PT207002	1145 x 515 x 40	Holder for mounting the workplace lamp, for mounting under add-on store
6	03.PT160900	1135 x 650 x 19	Intermediate shelf, max. surface loading 50 kg
7	03.PT704700	1045 x 450 x 60	Inclined sheet steel tray, flexible clamp mounting, incline continuously adjustable, with raised edge, max. surface loading 50 kg
9	03.PT704740	1046 x 400	Tray, melamine resin coated wooden panel, 30 mm, flexible clamp mounting, max. surface loading 50 kg

Accessories for table width 2000 mm

Pos.	Item no.	Dimensions in mm (W x D x H)	Description
2	03.PT206000	2000 x 40 x 40	Back board made of 40 x 40 mm square tube
4	03.PT2053	1600 x 600 x 400	Add-on store, dividers: 5x small divider, 4x large divider, flexible clamp mounting, max. surface loading 50 kg
	03.PT2053D	1600 x 600 x 400	Add-on store without dividers, e.g. for mounting of the printer pull-out, flexible clamp mounting, max. surface loading 50 kg
5	03.PT207003	976 x 51 x 54	Workplace lighting, LED with dimming function, rotatable, 32 W, 1409 lux
	03.PT207001	1730 x 515 x 40	Holder for mounting the workplace lamp, for mounting under add-on store
6	03.PT200900	1720 x 770 x 19	Intermediate shelf, max. surface loading 50 kg
7	03.PT704800	1630 x 450 x 60	Inclined sheet steel tray, flexible clamp mounting, incline continuously adjustable, with raised edge, max. surface loading 50 kg
9	03.PT704750	1600 x 400	Tray, melamine resin coated wooden panel, 30 mm, flexible clamp mounting, max. surface loading 50 kg

The mounting beams or the add-on frame are the basis for all above-the-table-accessories.
Please note the matching accessories for table widths 1600 and 2000 mm.



Accessories for table widths 1600 and 2000 mm

Pos.	Item no.	Dimensions in mm (W x D x H)	Description
3	03.PT2062	1170	Mounting beams, short version, 485 mm above tabletop with screw fastening at table legs, PU = 2 pieces, for table 03.PT163000 and 03.PT203000
3	03.PT2064	1770	Mounting beams, long version, 1085 mm above tabletop with screw fastening at table legs, PU = 2 pieces, for table 03.PT163000 and 03.PT203000
3	03.PT2065	1170	Mounting beams, short version, 485 mm above tabletop with screw fastening at table legs, PU = 2 pieces, for table 03.PT16350, 03.PT203500, 03.PT163800 and 03.PT203800
3	03.PT2066	1770	Mounting beams, long version, 1085 mm above tabletop with screw fastening at table legs, PU = 2 pieces, for table 03.PT16350, 03.PT203500, 03.PT163800 and 03.PT203800
8	03.PT2082	440 x 520 x 90	Universal tray for monitor, adhesive tape dispenser, etc. Clamp mounting at beams, max. surface loading 25 kg
10	03.PT205350	375 x 658 x 100	Printer pull-out for mounting on add-on store
11	03.PT200600	520 x 500 x 150	Steel drawer, lockable, for right and/or left use under table, plastic sliding guide, with protection against slipping out, load capacity 35 kg, internal dimensions: 460 x 495 x 120
12	03.PT228100	100 – 242 x 150 x 320 – 545	PC support for mounting under packing table, incl. fixing screws and drilling template
	03.PT228101	130 x 240 x 120	Beam attachment for PC holder
13	03.PT509001	51 x 51 x 445	Support column with screw clamps for attachment of an articulated TFT monitor arm and a keyboard tray, aluminium profile with clamp fastening, 14 – 40 mm clamping range
	03.PT509002	51 x 51 x 445	Support column with screw clamps for attachment of an articulated TFT monitor arm and a keyboard tray, aluminium profile with clamp fastening, 5 – 65 mm clamping range
	03.PT509006	51 x 51 x 845	Support column with screw clamps for attachment of an articulated TFT monitor arm and a keyboard tray, aluminium profile with clamp fastening, 5 – 65 mm clamping range
14	03.PT509201	640 x 728 x 120	Keyboard and mouse tray with articulated arm for flexible attachment to support column or adapter, surface area: 640 x 172mm, load capacity 10 kg
15	03.PT20	535 x 600 x 785	Cabinet unit with 1x door, 1x drawer
16	03.509204	47 x 67 x 200	Adapter for pivot arm and support carriage



Packing tables - workplace systems

Packaging table basic

- Sturdy construction made of 40 x 40 mm square tube
- Top front additional square tube beam
- Top rear stiffening plate for stabilisation
- Worktop optionally:
 - Beech multiplex, glue laminated, oiled or
 - MDF worktop with 0.7 mm HPL coat, 4-sided ABS edging
- Leveling glides under the feet
- Load capacity 300 kg
- Delivery unassembled



New



Basic table depth 750

Item no.	Dimensions in (W x D x H)	Worktop
PT1575BU	1500 x 750 x 859	Beech multiplex
PT2075BU	2000 x 750 x 859	Beech multiplex
PT1575HPL	1500 x 750 x 859	MDF with HPL coat
PT2075HPL	2000 x 750 x 859	MDF with HPL coat

Basic table depth 900 mm

Item no.	Dimensions in (W x D x H)	Worktop
PT1590BU	1500 x 900 x 859	Beech multiplex
PT2090BU	2000 x 900 x 859	Beech multiplex
PT1590HPL	1500 x 900 x 859	MDF with HPL coat
PT2090HPL	2000 x 900 x 859	MDF with HPL coat

Height adjustment

- Height-adjustable on a grid of 25 mm
- Complete for a workbench with 4 feet

Item no.	Version
03.15.95	Height adjustment of 200 mm
03.15.96	Height adjustment of 300 mm



- Construction made of 45 x 45 mm square tube
- Feet made of Aluminium profiles 40 x 40 mm
- Worktop optionally:
Beech mutliplex, glue laminated, oiled or
MDF worktop with 0.7 mm HPL coat, 4-sided ABS edging
- Travel speed 12 mm/s
- 4 different types of height adjustment:
Clamp fixing, load capacity 200 kg
Crank adjustment, load capacity 200 kg
Electric height adjustment with 1 motor, load capacity 180 kg
Electric height adjustment with 2 motors, load capacity 300 kg
- Delivery unassembled

New

**Basic table depth 750 mm**

- Dimensions in mm (W x D x H): 1500 x 750 x 710-1055 mm

Item no.	Height adjustment	Worktop
PT4150KL75B	Clamp fixing	Beech multiplex
PT4150KU75B	Crank adjustment	Beech multiplex
PT4150E175B	Electric with 1 motor	Beech multiplex
PT4150E275B	Electric with 2 motors	Beech multiplex
PT4150KL75H	Clamp fixing	MDF with HPL coat
PT4150KU75H	Crank adjustment	MDF with HPL coat
PT4150E175H	Electric with 1 motor	MDF with HPL coat
PT4150E275H	Electric with 2 motors	MDF with HPL coat

Basic table depth 750 mm

- Dimensions in mm (W x D x H): 2000 x 750 x 710-1055 mm

Item no.	Height adjustment	Worktop
PT4200KL75B	Clamp fixing	Beech multiplex
PT4200KU75B	Crank adjustment	Beech multiplex
PT4200E175B	Electric with 1 motor	Beech multiplex
PT4200E275B	Electric with 2 motors	Beech multiplex
PT4200KL75H	Clamp fixing	MDF with HPL coat
PT4200KU75H	Crank adjustment	MDF with HPL coat
PT4200E175H	Electric with 1 motor	MDF with HPL coat
PT4200E275H	Electric with 2 motors	MDF with HPL coat

**Basic table depth 900 mm**

- Dimensions in mm (W x D x H): 1500 x 900 x 710-1055 mm

Item no.	Height adjustment	Worktop
PT4150KL90H	Clamp fixing	MDF with HPL coat
PT4150KU90H	Crank adjustment	MDF with HPL coat
PT4150E190H	Electric with 1 motor	MDF with HPL coat
PT4150E290H	Electric with 2 motors	MDF with HPL coat
PT4150KL90B	Clamp fixing	Beech multiplex
PT4150KU90B	Crank adjustment	Beech multiplex
PT4150E190B	Electric with 1 motor	Beech multiplex
PT4150E290B	Electric with 2 motors	Beech multiplex

Basic table depth 900 mm

- Dimensions in mm (W x D x H): 2000 x 900 x 710-1055 mm

Item no.	Height adjustment	Worktop
PT4200KL90H	Clamp fixing	MDF with HPL coat
PT4200KU90H	Crank adjustment	MDF with HPL coat
PT4200E190H	Electric with 1 motor	MDF with HPL coat
PT4200E290H	Electric with 2 motors	MDF with HPL coat
PT4200KL90B	Clamp fixing	Beech multiplex
PT4200KU90B	Crank adjustment	Beech multiplex
PT4200E190B	Electric with 1 motor	Beech multiplex
PT4200E290B	Electric with 2 motors	Beech multiplex



Packing tables - workplace systems



Combination with packaging table basic, width 2000 mm

POS	Item no.	Dimensions in mm (W x D x H)	Description
1	PT2075BU	2000 x 750 x 859	Packaging table basic, depth 750 mm, worktop beech multiplex 40 mm
2	03.935.125.240	H 1250	Support column 30 x 60 mm, left
	03.935.125.140	H 1250	Support column 30 x 60 mm, right
3	03.935.TR10L	1000	Crossbar, left, 1000 mm
4	03MONHAL	125 x 125 x 121	Monitor mount, is attached to the crossbar
5	03.910.320	1000 x 320 x 20	Shelf, Inclination 0, 10 and 20°
6	03.910.220	1000 x 220 x 20	Shelf, Inclination 0, 10 and 20°
7	PT10ROHAMW	1000 x 32	Unwind holder incl. mounting, without paper roll
8	PTTAAUFB320	598 x 300 x 95	Keyboard pull-out beneath shelf, for shelves depth 320 mm
9	07.89.06	250 x 550 x 500	PC holder H, for fixing under the worktop, adjustable width
10	PTFBXXXXXMLL50	900 x 650 x 100/515	Trolley with 5 dividers for cardboard boxed, 4 steering rollers with lock Ø 50 mm, load capacity 120 kg, retrofittable

New

Other workplace systems

**Support column profile 30 x 60 mm**

- Reinforced by U-profile tube
- Thinner plate thicknesses on request
- Three support columns are required for installation on 2 m work surfaces
- Left column is also used as centre column



Item no.	Dimensions in mm
03.935.650.240	650 left
03.935.650.140	650 right
03.935.950.240	950 left
03.935.950.140	950 right
03.935.125.240	1250 left
03.935.125.140	1250 right

**Shelf depth 220 mm**

Item no.	Dimensions in mm (W x D x H)	Usable dimensions in mm (W x D)
03.910.220	1000 x 220 x 20	914 x 218
03.915.220	1500 x 220 x 20	1414 x 218
03.920.220	2000 x 220 x 20	1864 x 218

Shelf depth 320 mm

Item no.	Dimensions in mm (W x D x H)	Usable dimensions in mm (W x D)
03.910.320	1000 x 320 x 20	914 x 318
03.915.320	1500 x 320 x 20	1414 x 318
03.920.320	2000 x 320 x 20	1864 x 318

Shelf depth 420 mm

Item no.	Dimensions in mm (W x D x H)	Usable dimensions in mm (W x D)
03.910.420	1000 x 420 x 20	914 x 418
03.915.420	1500 x 420 x 20	1414 x 418
03.920.420	2000 x 420 x 20	1864 x 418

**Keyboard pull-out beneath shelf**

- For shelf depth 320 and 420 mm

Item no.	Dimensions in mm (W x D x H)
PTTAAUFB320	598 x 300 x 95

**Unwind holder, axis Ø 32 mm**

Item no.	Width in mm
PT10ROHAMW	1000
PT15ROHAMW	1500

**Crossbar**

Item no.	Version
03.935.TR10L	1000 mm, left
03.935.TR100	1000 mm, right
03.935.TR150	1500 mm
03.935.TR200D	2000 mm

**Monitor mount**

- For attachment to the crossbar

Item no.	Dimensions in mm (W x D x H)
03MONHAL	125 x 121 x 125



New



Combination with packaging table basic, width 1500 mm

POS	Item no.	Dimensions in mm (W x D x H)	Description
1	PT1575BU	1500 x 750 x 859	Packaging table basic, depth 750 mm, worktop beech multiplex 40 mm
2	03.935.125.240	H 1250	Support column 30 x 60 mm, left
	03.935.125.140	H 1250	Support column 30 x 60 mm, right
3	03.915.320	1500 x 320 x 20	Shelf, depth 320 mm
4	03.915.420G	1500 x 420	Shelf, perforated, for mounting between support columns
5	03.PT2956	H 250 mm	Bracket for shelf depth für 420mm
	03.PT2957	H 450 mm	Bracket for shelf depth für 420mm
6	PT15ETHAMW	1500	Holder for label rolls
7	03.2018-02D	1383 x 735 x 40	Steel shelf, full depth

Support column profile 30 x 60 mm

- Reinforced by U-profile tube
- Thinner plate thicknesses on request
- Three support columns are required for installation on 2 m work surfaces
- Left column is also used as centre column

Item no.	Dimensions in mm
03.935.650.240	650 left
03.935.650.140	650 right
03.935.950.240	950 left
03.935.950.140	950 right
03.935.125.240	1250 left
03.935.125.140	1250 right

**Shelf, perforated, for mounting between support columns**

- Suitable for the use of brackets
- Adjustable in inclination and height
- Inclination 0°, 10° und 20°, inkl. Abrollrand
- Incl. mounting

Item no.	Dimensions in mm (W x D)
03.910.420G	1000 x 420
03.915.420G	1500 x 420
03.920.420G	2000 x 420

Item no.	Dimensions in mm (W x D)
03.910.620G	1000 x 600
03.915.620G	1500 x 600
03.920.620G	2000 x 600

**Holder for label rolls**

Item no.	Width in mm
PT10ETHAMW	1000
PT15ETHAMW	1500

**Shelf depth 220 mm**

Item no.	Dimensions in mm (W x D x H)	Usable dimensions in mm (W x D)
03.910.220	1000 x 220 x 20	914 x 218
03.915.220	1500 x 220 x 20	1414 x 218
03.920.220	2000 x 220 x 20	1864 x 218

Shelf depth 320 mm

Item no.	Dimensions in mm (W x D x H)	Usable dimensions in mm (W x D)
03.910.320	1000 x 320 x 20	914 x 318
03.915.320	1500 x 320 x 20	1414 x 318
03.920.320	2000 x 320 x 20	1864 x 318

Shelf depth 420 mm

Item no.	Dimensions in mm (W x D x H)	Usable dimensions in mm (W x D)
03.910.420	1000 x 420 x 20	914 x 418
03.915.420	1500 x 420 x 20	1414 x 418
03.920.420	2000 x 420 x 20	1864 x 418

**Bracket for shelves depth 420 mm**

Item no.	Height in mm
03.PT2956	250
03.PT2957	450

Bracket for shelves depth 600 mm

Item no.	Height in mm
03.PT2954	250
03.PT2955	450

Scanner holder

- Maximum freedom of adjustment
- Suitable for standard industrial scanners
- Opening: 90 x 54 mm
- Max. scanner size (WxHxD): 89 x 55 x 125 mm
- Slats: 18 pieces, 15 mm width
- Housing: Solid plastic housing, steel bracket
- Delivery without scanner



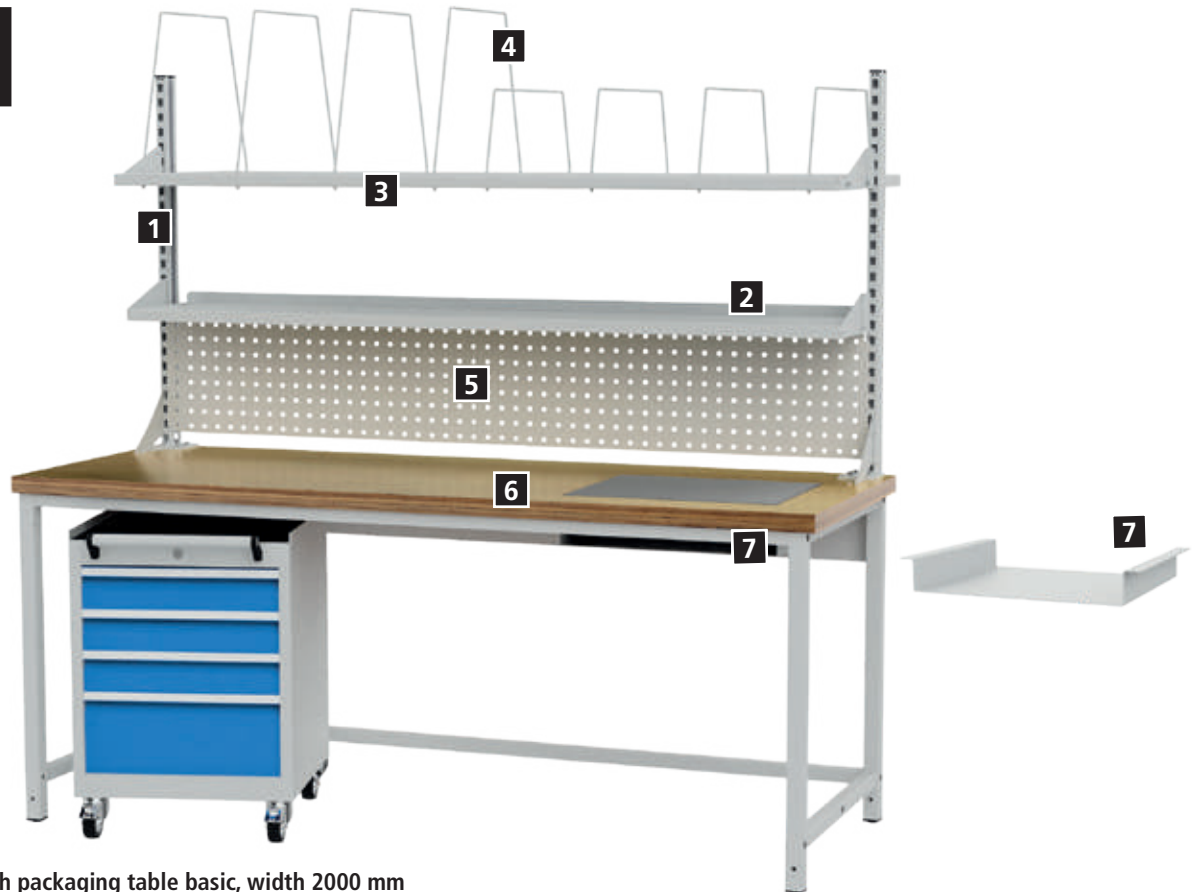
Item no.
PTSCHA100548



Packing tables - workplace systems

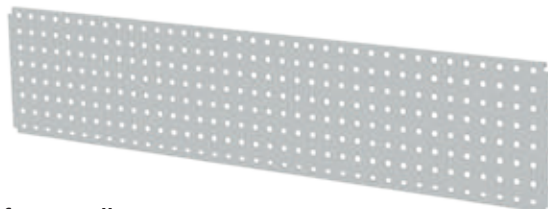
Accessories

New



Combination with packing table basic, width 2000 mm

POS	Item no.	Dimensions in mm (W x D x H)	Description
1	03.935.950.240	H 950	Support column 30 x 60 mm, left
	03.935.950.140	H 950	Support column 30 x 60 mm, right
2	03.920.320	2000 x 320 x 20	Shelf, depth 320 mm
3	03.920.620G	2000 x 600	Shelf, perforated, for mounting between support columns
4	03.PT2956	H 250 mm	Bracket for shelf depth für 420mm
	03.PT2957	H 450 mm	Bracket for shelf depth für 420mm
5	03.983.105	2000 x 20 x 302	Perforated wall
6	03.PTWAAUSS	2000 x 750 x 40	Worktop with cut-out for table scale, please state the base area of the scale
7	03.PTWAHA		Table scale holder U-shaped for mounting under the worktop Please state the base area and height of the scale.



Perforate wall

- 2000 mm perforated walls can only be attached to setups without an overhead frame, otherwise 2 x 1000 mm are required
- Steel plate, square perforation 10 x 10 mm

Item no.	Dimensions in mm (W x D x H)
03.983.101	700 x 20 x 302
03.983.103	1500 x 20 x 302
03.983.105	2000 x 20 x 302

New



Tablet wall mount with pivot arm

- Universally and flexibly applicable
- Optimum viewing distance thanks to individual table screen positioning
- Inclination: -6° to +46°; rotatable: 180°
- Colour: silver metallic

Item no.	Dimensions in mm (W x D x H)	Mounting
07.8934LW	95 x 225 x 170	Perforated wall
07.8934TR		Support column

New

Other workplace systems

**Accessory set for swivelling workplace lights**

- 2 pieces

Item no.	Height in mm	Suitable for
4016221000	80	LED lamp premium (page 319-322)
4016137000	80	LED lamp universal (page 318)

**Energy duct with 2x earthed socket and 1x network port**

- For mounting under the worktop or on the support column

Item no.	Dimensions in mm (W x D x H)
PTEK375	375 x 60 x 130

**Standard pivot arm bracket | Support column**

- For lateral mounting at support column
- For holding the pivot arm

Item no.	Version
07.98.02	For 40 x 40 x 2 mm pivot arm

**Pivot arm with shelf and ribbed rubber mat**

Item no.	Dimensions in mm (W x D x H)
07.98.11	420 x 300 x 20

**Pivot arm with monitor bracket**

- VESA 75 / 100 mm

Item no.	Dimensions in mm (W x D x H)
07.98.07	700 x 370 x 320

**Pivot arm with monitor bracket and keyboard platform**

- VESA 75 / 100 mm
- Tray made of steel sheet

Item no.	Dimensions in mm (W x D x H)
07.98.15	700 x 370 x 320

**Flat screen holder for perforated wall**

- VESA Standard

Item no.	Dimensions in mm (W x D x H)
07.45.21	160 x 30 x 210

**Swiveling monitor bracket, for attachment to the flat screen holder**

- VESA Standard

Item no.	Dimensions in mm (W x D x H)
07.45.22	125 x 75 x 125



Packing tables - workplace systems

Packing tables - Real world combinations

New



Axle kit

- Incl. additional strut and axle tube Ø 32 mm
- Can be retrofitted
- Can be used for packing table basic and comfort

Item no.	Width in mm
03.PTACS15	1500
03.PTACS20	2000

Hanging cabinet

- Drawers with full pull-out 100 % - load capacity 50 kg
- Drawer guides on ball bearing



- 1 x drawer 150 mm

Item no.	Dimensions in mm (W x D x H)
53.150	531 x 500 x 215
38.150	381 x 500 x 215



- 3 x drawer 100 mm

Item no.	Dimensions in mm (W x D x H)
53.300	531 x 500 x 365
38.300	381 x 500 x 365



- 2 x drawer 200 mm

Item no.	Dimensions in mm (W x D x H)
44.011	531 x 500 x 465
38.011	381 x 500 x 465



- 1 x hinged door 350 mm

Item no.	Dimensions in mm (W x D x H)
44.001	531 x 500 x 465



Support for hanging cabinets basic

- Mandatory for installation of hanging cabinets
- Beech multiplex
- Packing unit: 2 pieces

Item no.
03.5340.35



Support for hanging cabinets comofort

- Mandatory for installation of hanging cabinets
- Packing unit: 2 pieces

Item no.	Suitable for table depth in mm
4XXXXX75TR	750
4XXXXX90TR	900

Packing tables accessories

New

Other workplace systems

- Construction made of 45 x 45 mm square tube
- Feet made of aluminium profile 40 x 40 mm
- Worktop optionally:
Beech mutliplex, glue laminated, oiled or



Side tabel height adjustable

- Worktop beech mutliplex, 40 mm

Item no.	Dimensions in mm (W x D x H)
4075KL75GB	750 x 750 x 710-1055
4075KL90GB	750 x 900 x 710-1055

- MDF worktop with 0.7 mm HPL coat, 4-sided ABS edging
- Clamp fixing, load capacity 200 kg
- Delivery unassembled



Side table height adjustable

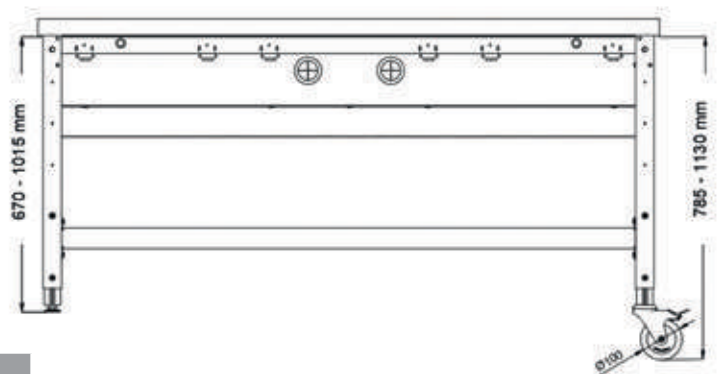
- Worktop MDF with HPL coat, 40 mm

Item no.	Dimensions in mm (W x D x H)
4075KL75GH	750 x 750 x 710-1055
4075KL90GH	750 x 900 x 710-1055



workergo 4-foot- eypander casters Ø 100 mm

Item no.	Description
4XXXXXMBL100	2 x fixed caster, 2 x steering caster without lock
4XXXXXMLL100	4 steering caster, thereof 2 with locks



Roll container

- 3 x drawer
- Usable drawer dimensions: 450 x 400 mm
- Central locking
- Drawers with full pull-out100 %, load capacity each 50 kg
- Incl. roll-off edge
- 4 x steering caster Ø 80 mm, thereof mit 2 x mit Feststeller with lock

Item no.	Dimensions in mm (W x D x H)
46.021BR80	530 x 500 x 745



Roll container

- 4 x drawer
- Usable drawer dimensions: 450 x 400 mm
- Central locking
- Drawers with full pull-out100 %, load capacity each 50 kg
- Incl. roll-off edge
- 4 x steering caster Ø 80 mm, thereof mit 2 x mit Feststeller with lock

Item no.	Dimensions in mm (W x D x H)
46.220BR80	530 x 500 x 745



Packing tables - workplace systems

Cutting stands

- Cutting stand for cardboard, bubble wrap, foam film, etc.
- Easily exchangeable blade cartridge
- Circular blade for paper, corrugated cardboard, etc.
- Blade knife for foils, soft films and bubble wrap



Unwind stand, mobile

- Max. weight per roll 200 kg
- Max. roll dia. 500 mm

Item no.	Cutting width x D x H in mm
07.23107	750 / 1000 x 600 x 400
07.23110	1000 / 1250 x 600 x 400
07.23112	1250 / 1500 x 600 x 400



Horizontal cutting stand, double

- Outlet height continuously adjustable
- Max. roll dia. 800 mm each
- Max. total weight 130 kg

Item no.	Cutting width x D x H in mm
07.26407	1120 x 850 x 1665
07.26410	1370 x 850 x 1665
07.26412	1620 x 850 x 1665
07.26416	1920 x 850 x 1665



Attachment cutting device

- Clamping range up to 70 mm

Item no.	Cutting width x D x H in mm
07.55107	750 / 1033 x 250 x 280
07.55110	1000 / 1283 x 250 x 280
07.55112	1250 / 1533 x 250 x 280



Horizontal cutting stand

- Outlet height continuously adjustable
- Max. roll dia. 800 mm
- Max. 100 kg

Item no.	Cutting width x D x H in mm
07.26207N	750 / 1120 x 850 x 1165
07.26210N	1000 / 1370 x 850 x 1165
07.26212N	1250 / 1620 x 850 x 1165
07.26216N	1600 / 1970 x 850 x 1165
07.26218N	1800 / 2170 x 850 x 1165



Table cutting device

- Max. roll dia. 250 mm
- Max. 80 kg

Item no.	Cutting width x D x H in mm
07.25607	750 / 1000 x 341 x 340
07.25610	1000 / 1250 x 341 x 340
07.25612	1250 / 1500 x 341 x 340
07.25716	1600 / 1850 x 341 x 340



Vertical cutting stand

- Max. roll dia. 800 mm
- Max. 200 kg

Item no.	Cutting width x D x H in mm
07.35110	1000 / 800 x 880 x 1295
07.35112	1250 / 800 x 880 x 1545
07.35116	1600 / 800 x 880 x 1895
07.35118	1800 / 800 x 880 x 2095
07.35120	2000 / 800 x 880 x 2295

New

**Table scales, dual range**

- Stainless steel weighing platform
- Substructure powder-coated. Reliable, extremely precise industrial
- Incl. evaluation unit 82B1, calibratable class III
- Can be used as table and wall unit
- Membrane keypad with 6x short-stroke key
- 1x strain gauge weighbridge can be connected
- 1x serial RS-232 onboard interface
- Integrated 230 V power supply
- Mains plug with 2 m cable
- Strain gauge weighing cell made of anodised aluminium alloy (IP66)
- 2 m measuring cable (fixed connection)
- EC-calibratable Class III
- Weighing range up to 60 kg/20 g



Item no.	Weighing platform in mm	Weighing range in kg	Increment in g
03.WA833B1	500 x 400	60	20

Conformity assessment (HKB) for scales up to 60 kg

Item no.
03.WA114223

Counting scales 30kg/1g, non-calibratable

- ABS plastic housing
- Stainless steel weighing platform
- 3x LCD display, digit height 14 mm with blue backlight, membrane keyboard with tactile keys, numeric keypad and acoustic feedback
- Weighing functions: taring, counting, totalising, target weight checking
- Serial RS-232 interface, Sub-D socket for printer connection, acoustic-optical signal
- Optimisation of counting accuracy
- Memory for 200 reference weights
- Battery operation
- Plug-in power supply with 1.5 m cable
- Incl. transparent protective hood
- For counting parts from 0.8 g



Item no.	Weighing platform in mm	Weighing range in kg	Increment in g
03.WA200927	280 x 220	30	1

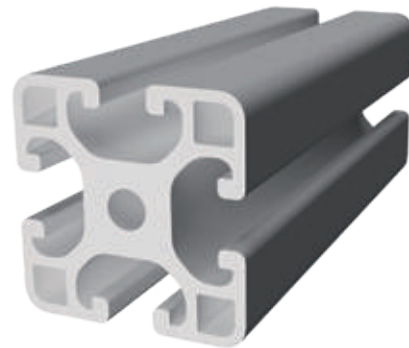


work  alu[®]



General perks and advantages of aluminium profiles*

- Modular, simple plug-in system for all requirements
- No drilling. The profiles are already cut to size and provided for easy self-assembly
- Non-magnetic or magnetisable
- The surface of the aluminium profile is anodised and therefore not electrically conductive. It serves as electrical insulation
- When correctly contacted, the aluminium profile has good electrical conductive. Contact is made via the front of the profile, which has no anodised layer
- Very light due to its low density of 2.71 g/cm³, which is about one third of the weight of steel
- Highly corrosion resistant
- Hygienic, easy to clean

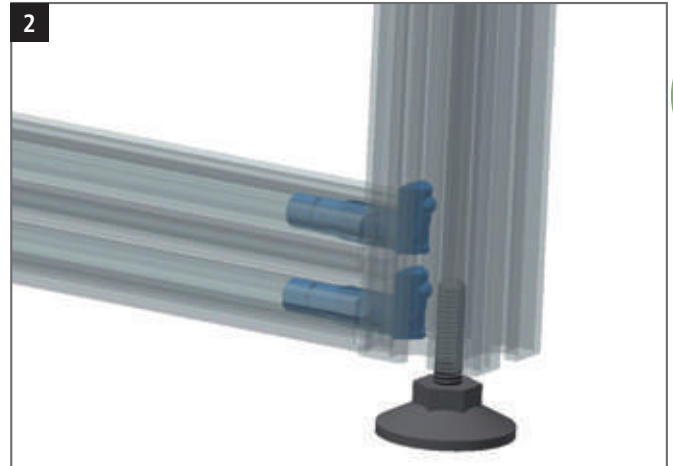
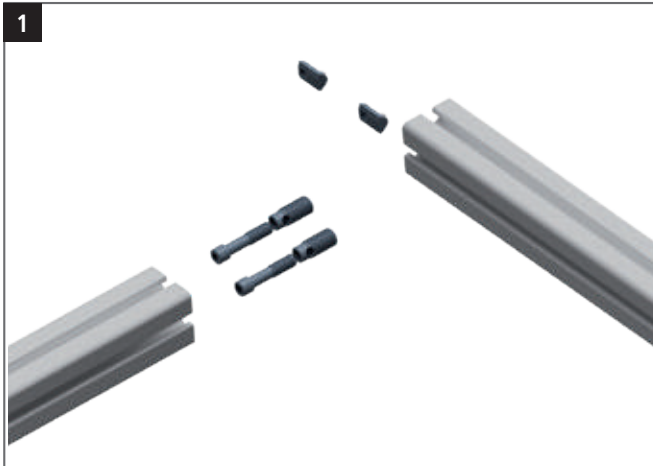


Characteristics and advantages of the workalu[®] product series

- High combination variety due to the modular system
- Quick and easy combination of all tables and accessories
- Quick and easy profile shifting through corner connections, double-sided frames and add-on modules
- Extensive range of accessories, current accessories can be combined with the new workalu[®] series
- Position of the profiles variable and steplessly adjustable

How it works:

1 The sleeves with the screws are screwed into the profile grooves with a drill. The slot nuts are pushed into the groove of the profile to which the first profile is to be screwed. **2** Then the screws are screwed into the slot nuts and tightened.



Levelling:

The height of the workalu® 4-leg tables can be adjusted by 20 mm. Floor unevenness can thus be easily compensated for.



Our solution

The workalu® has the ability to grow with the diversity of your workplace. Thanks to the flexibility of the aluminium profile and the numerous accessories, the workstation can be extended at any time. This allows for an perfectly optimized handling area, which is essential from an ergonomic point of view.

Advantages:

- Assembly times are reduced
- Ergonomic workplace design
- Modular and easily expandable
- Slim and timeless design

With workalu® workplaces adapt to the requirements of the user and not vice versa. It can be variably expanded and changed at any time. Only this variability and flexibility allows for highly optimised workflows. Static, unchangeable workplaces are a thing of the past.





Worktops





Beech multiplex worktop | with steel edges

Page 424



Solid red beech worktop

Page 426



Workbench top end profiles and rear edge profile

Page 427



MDF worktops, plastic worktops

Page 428



Worktop connector

Page 430



Chipboard worktop and ESD conductive worktop

Page 431



Worktops

Beech multiplex worktop | with steel edges



Beech multiplex worktop

- Glue laminated, oiled
- Water repellent
- Gluing according to EN 314-2

Top thickness (mm)	25	40	50
Dimensions in mm (WxD)	Item no.	Item no.	Item no.
750 x 600	03.7560.25	03.7560.40	03.7560.50
1000 x 600	03.1060.25	03.1060.40	03.1060.50
1250 x 600	03.1260.25	03.1260.40	03.1260.50
1500 x 600	03.1560.25	03.1560.40	03.1560.50
1750 x 600	03.1760.25	03.1760.40	03.1760.50
2000 x 600	03.2060.25	03.2060.40	03.2060.50
2500 x 600	03.2560.25	03.2560.40	03.2560.50
750 x 750	03.7575.25	03.7575.40	03.7575.50
810 x 750	03.81.25	03.81.40	03.81.50
1000 x 750	03.10.25	03.10.40	03.10.50
1250 x 750	03.125.25	03.125.40	03.125.50
1500 x 750	03.15.25	03.15.40	03.15.50
1750 x 750	03.1775.25	03.1775.40	03.1775.50
2000 x 750	03.20.25	03.20.40	03.20.50
2500 x 750	03.25.25	03.25.40	03.25.50
750 x 900	03.7590.25	03.7590.40	03.7590.50
1000 x 900	03.1090.25	03.1090.40	03.1090.50
1250 x 900	03.1290.25	03.1290.40	03.1290.50
1500 x 900	03.1590.25	03.1590.40	03.1590.50
1750 x 900	03.1790.25	03.1790.40	03.1790.50
2000 x 900	03.2090.25	03.2090.40	03.2090.50
2500 x 900	03.2590.25	03.2590.40	03.2590.50

**Beech multiplex worktop with cover****For automotive workshops, paint shops and welding work**

- With 1.5 mm thick galvanised steel cover, bolted on as an L-profile

Top thickness (mm)	40	50
Dimensions in mm (WxD)	Item no.	Item no.
810 x 750	A03.81.40	A03.81.50
1000 x 750	A03.10.40	A03.10.50
1250 x 750	A03.125.40	A03.125.50
1500 x 750	A03.15.40	A03.15.50
2000 x 750	A03.20.40	A03.20.50
2500 x 750	A03.25.40	A03.25.50
1000 x 900	A03.1090.40	A03.1090.50
1250 x 900	A03.12590.40	A03.12590.50
1500 x 900	A03.1590.40	A03.1590.50
2000 x 900	A03.2090.40	A03.2090.50
2500 x 900	A03.2590.40	A03.2590.50

**Beech multiplex worktop with cover****For automotive workshops, paint shops and welding work**

- With recessed 1.5 mm stainless steel cover, bolted on as an L-profile

Top thickness (mm)	40	50
Dimensions in mm (WxD)	Item no.	Item no.
810 x 750	AE038140	AE038150
1000 x 750	AE031040	AE031050
1250 x 750	AE0312540	AE0312550
1500 x 750	AE031540	AE031550
2000 x 750	AE032040	AE032050
2500 x 750	AE032540	AE032550
1000 x 900	AE03109040	AE03109050
1250 x 900	AE031259040	AE031259050
1500 x 900	AE03159040	AE03159050
2000 x 900	AE03209040	AE03209050
2500 x 900	AE03259040	AE03259050

Worktops

Red beech, solid



Solid red beech worktop

- Strip laminated
- Finger jointed
- Glued wood panel with distinctive grain

Top thickness (mm)	40	50
Dimensions in mm (WxD)	Item no.	Item no.
1000 x 600	03.1060.40RB	03.1060.50RB
1250 x 600	03.1260.40RB	03.1260.50RB
1500 x 600	03.1560.40RB	03.1560.50RB
2000 x 600	03.2060.40RB	03.2060.50RB
2500 x 600	03.2560.40RB	03.2560.50RB
810 x 750	03.81.40RB	03.81.50RB
1000 x 750	03.10.40RB	03.10.50RB
1250 x 750	03.125.40RB	03.125.50RB
1500 x 750	03.15.40RB	03.15.50RB
2000 x 750	03.20.40RB	03.20.50RB
2500 x 750	03.25.40RB	03.25.50RB
1000 x 900	03.1090.40RB	03.1090.50RB
1250 x 900	03.1290.40RB	03.1290.50RB
1500 x 900	03.1590.40RB	03.1590.50RB
2000 x 900	03.2090.40RB	03.2090.50RB
2500 x 900	03.2590.40RB	03.2590.50RB



Beech multiplex worktop with steel edge

- With recessed 3 mm steel edge, bolted on as an L-profile

Top thickness (mm)	40	50
Dimensions in mm (WxD)	Item no.	Item no.
1000 x 600	K03.1060.40	K03.1060.50
1250 x 600	K03.12560.40	K03.12560.50
1500 x 600	K03.1560.40	K03.1560.50
2000 x 600	K03.2060.40	K03.2060.50
2500 x 600	K03.2560.40	K03.2560.50
810 x 750	K03.81.40	K03.81.50
1000 x 750	K03.10.40	K03.10.50
1250 x 750	K03.125.40	K03.125.50
1500 x 750	K03.15.40	K03.15.50
2000 x 750	K03.20.40	K03.20.50
2500 x 750	K03.25.40	K03.25.50
1000 x 900	K03.1090.40	K03.1090.50
1250 x 900	K03.12590.40	K03.12590.50
1500 x 900	K03.1590.40	K03.1590.50
2000 x 900	K03.2090.40	K03.2090.50
2500 x 900	K03.2590.40	K03.2590.50

**Workbench top end profiles, 3-sided**

- Beech multiplex
- Height 120 mm
- Thickness 15 mm

Item no.	Dimensions in mm (WxD)
PA.7560.12	750 x 600
PA.1060.12	1000 x 600
PA.1260.12	1250 x 600
PA.1560.12	1500 x 600
PA.1760.12	1750 x 600
PA.2060.12	2000 x 600
PA.2560.12	2500 x 600
PA.7575.12	750 x 750
PA81	810 x 750
PA.1075.12	1000 x 750
PA.1275.12	1250 x 750
PA150	1500 x 750
PA.1775.12	1750 x 750
PA200	2000 x 750
PA250	2500 x 750
PA.7590.12	750 x 900
PA.1090.12	1000 x 900
PA.1290.12	1250 x 900
PA.1590.12	1500 x 900
PA.1790.12	1750 x 900
PA.2090.12	2000 x 900
PA.2590.12	2500 x 900

**Rear edge profile**

- Beech multiplex
- Height 120 mm
- Thickness 15 mm

Item no.	Dimensions in mm (width)
RPA75	750
RPA81	810
RPA100	1000
RPA125	1250
RPA150	1500
RPA175	1750
RPA200	2000
RPA250	2500

Worktops

MDF worktops, plastic worktops



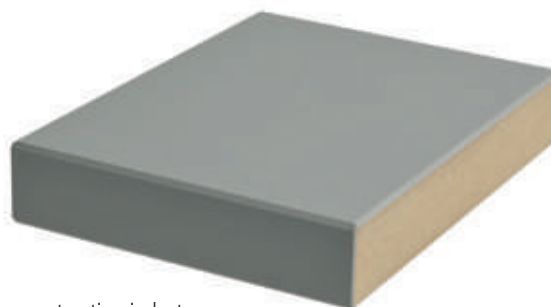
MDF worktop with 0.7 mm HPL coat | For assembly, shipping and laboratory

- HPL (high pressure laminate), also called "Resopal" is fire retarding as well as shock-, scratch- and abrasion-resistant
- 4-sided, ABS edging
- Heat and light resistant
- Stain-resistant, easy to clean and to disinfect
- Solvent resistant and largely chemical resistant

Top thickness (mm)	30	40	50
Dimensions in mm (WxD)	Item no.	Item no.	Item no.
750 x 600	H03.7560.30	H03.7560.40	H03.7560.50
1000 x 600	H03.1060.30	H03.1060.40	H03.1060.50
1250 x 600	H03.1260.30	H03.1260.40	H03.1260.50
1500 x 600	H03.1560.30	H03.1560.40	H03.1560.50
1750 x 600	H03.1760.30	H03.1760.40	H03.1760.50
2000 x 600	H03.2060.30	H03.2060.40	H03.2060.50
2500 x 600	H03.2560.30	H03.2560.40	H03.2560.50
750 x 750	H03.7575.30	H03.7575.40	H03.7575.50
810 x 750	H03.81.30	H03.81.40	H03.81.50
1000 x 750	H03.1075.30	H03.1075.40	H03.1075.50
1250 x 750	H03.1275.30	H03.125.40	H03.125.50
1500 x 750	H03.15.30	H03.15.40	H03.15.50
1750 x 750	H03.1775.30	H03.1775.40	H03.1775.50
2000 x 750	H03.20.30	H03.20.40	H03.20.50
2500 x 750	H03.25.30	H03.25.40	H03.25.50
750 x 900	H03.7590.30	H03.7590.40	H03.7590.50
1000 x 900	H03.1090.30	H03.1090.40	H03.1090.50
1250 x 900	H03.1290.30	H03.1290.40	H03.1290.50
1500 x 900	H03.1590.30	H03.1590.40	H03.1590.50
1750 x 900	H03.1790.30	H03.1790.40	H03.1790.50
2000 x 900	H03.2090.30	H03.2090.40	H03.2090.50
2500 x 900	H03.2590.30	H03.2590.40	H03.2590.50

MDF worktop with 2.5 mm Trovidur coat

- With robust, hard-wearing 2.5 mm plastic coat
- 4-sided ABS edging
- Low flammability surface
- Very good electrical insulating properties
- High resistance to acids, lyes and salt solutions
- Areas of application: Chemical tank and plant construction, electrical industry, construction industry



Top thickness (mm)	30	40	50
Dimensions in mm (WxD)	Item no.	Item no.	Item no.
1000 x 600	T03.1060.30	T03.1060.40	T03.1060.50
1250 x 600	T03.1260.30	T03.1260.40	T03.1260.50
1500 x 600	T03.1560.30	T03.1560.40	T03.1560.50
2000 x 600	T03.2060.30	T03.2060.40	T03.2060.50
810 x 750	T03.81.30	T03.81.40	T03.81.50
1000 x 750	T03.10.30	T03.10.40	T03.10.50
1250 x 750	T03.125.30	T03.125.40	T03.125.50
1500 x 750	T03.15.30	T03.15.40	T03.15.50
2000 x 750	T03.20.30	T03.20.40	T03.20.50
1000 x 900	T03.1090.30	T03.1090.40	T03.1090.50
1250 x 900	T03.1290.30	T03.1290.40	T03.1290.50
1500 x 900	T03.1590.30	T03.1590.40	T03.1590.50
2000 x 900	T03.2090.30	T03.2090.40	T03.2090.50

Plastic worktop

- Plastic worktop, pressed polyethylene PE 500
- Surface white
- Highly resistant to wear and abrasion
- Excellent chemical resistance
- Highly impact, cut and scratch-proof
- Low flammability
- Area of application: Assembly and automation technology
- Printing and textile industry, conveyor and storage technology



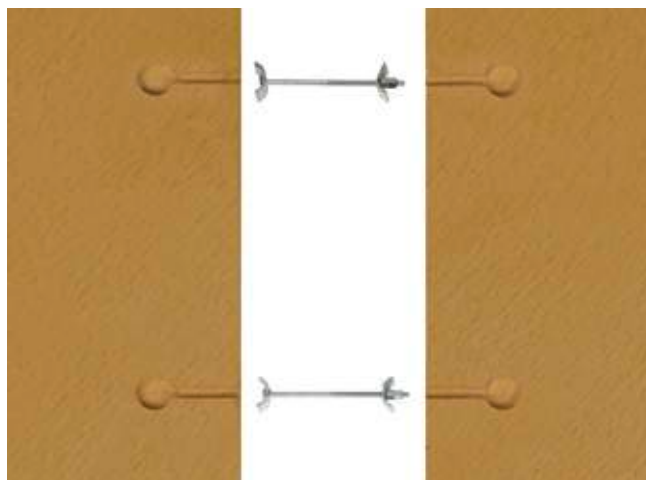
Top thickness (mm)	20	25	30
Dimensions in mm (WxD)	Item no.	Item no.	Item no.
1500 x 750	KUW03.15.20	KUW03.15.25	KUW03.15.30
2000 x 750	KUW03.20.20	KUW03.20.25	KUW03.20.30

Plastic worktop

- Worktop made from pressed reclaimed material
- Surface multicoloured/black
- Resistant to lyes and acids
- Area of application: Electroplating, bulk goods industry, food industry, paper industry



Top thickness (mm)	20	25	30
Dimensions in mm (WxD)	Item no.	Item no.	Item no.
1500 x 750	KUS03.15.20	KUS03.15.25	KUS03.15.30
2000 x 750	KUS03.20.20	KUS03.20.25	KUS03.20.30



Top-top connector

- With Lamello and two fixing clamps

Item no.

03.00.32

MDF worktop with 2.5 mm linoleum coat

- 4-sided ABS edging
- Easy to care
- Durable
- Antistatic
- Scratch resistant
- Due to the production process, a yellow patina may be visible at the beginning, which disappears again with time due to the influence of light
- Production, light and environmental influences may lead to colour differences and colour changes in the coating
- Made from purely natural raw materials, thus linoleum is very environmentally friendly in production, use and disposal
- Areas of application: technical, electrical and chemical works



Top thickness (mm)	30	40	50
Dimensions in mm (WxD)	Item no.	Item no.	Item no.
1000 x 600	L03.1060.30	L03.1060.40	L03.1060.50
1250 x 600	L03.1260.30	L03.1260.40	L03.1260.50
1500 x 600	L03.1560.30	L03.1560.40	L03.1560.50
2000 x 600	L03.2060.30	L03.2060.40	L03.2060.50
2500 x 600	L03.2560.30	L03.2560.40	L03.2560.50
810 x 750	L03.81.30	L03.81.40	L03.81.50
1000 x 750	L03.10.30	L03.10.40	L03.10.50
1250 x 750	L03.125.30	L03.125.40	L03.125.50
1500 x 750	L03.15.30	L03.15.40	L03.15.50
2000 x 750	L03.20.30	L03.20.40	L03.20.50
2500 x 750	L03.25.30	L03.25.40	L03.25.50
1000 x 900	L03.1090.30	L03.1090.40	L03.1090.50
1250 x 900	L03.1290.30	L03.1290.40	L03.1290.50
1500 x 900	L03.1590.30	L03.1590.40	L03.1590.50
2000 x 900	L03.2090.30	L03.2090.40	L03.2090.50
2500 x 900	L03.2590.30	L03.2590.40	L03.2590.50

**Chipboard worktop with melamine resin coating**

- 4-sided, ABS edging
- Chipboard carrier plate with direct coating
- Abrasion-resistant and easy to care for surface

Top thickness (mm)	28
Dimensions in mm (WxD)	Item no.
750 x 600	07.M7560.28
1000 x 600	07.M1060.28
1250 x 600	07.M12560.28
1500 x 600	07.M1560.28
1750 x 600	07.M1760.28
2000 x 600	07.M2060.28
750 x 750	07.M7575.28
810 x 750	07.M8175.28
1000 x 750	07.M1075.28
1250 x 750	07.M12575.28
1500 x 750	07.M1575.28
1750 x 750	07.M1775.28
2000 x 750	07.M2075.28
2500 x 750	07.M2575.28
750 x 900	07.M7590.28
1000 x 900	07.M1090.28
1250 x 900	07.M12590.28
1500 x 900	07.M1590.28
1750 x 600	07.M1790.28
2000 x 900	07.M2090.28

ESD conductive worktop

- Surface made from conductive HPL laminate
- Suitable for all electrostatically sensitive areas
- Surface RAL 7035



Top thickness (mm)	30
Dimensions in mm (WxD)	Item no.
750 x 600	07.E7560.30
1000 x 600	07.E1060.30
1250 x 600	07.E12560.30
1500 x 600	07.E1560.30
1750 x 600	07.E1760.30
2000 x 600	07.E2060.30
750 x 750	07.E7575.30
810 x 750	07.E8175.30
1000 x 750	07.E1075.30
1250 x 750	07.E12575.30
1500 x 750	07.E1575.30
1750 x 750	07.E1775.30
2000 x 750	07.E2075.30
2500 x 750	07.E2575.30
750 x 900	07.E7590.30
1000 x 900	07.E1090.30
1250 x 900	07.E12590.30
1500 x 900	07.E1590.30
1750 x 900	07.E1790.30
2000 x 900	07.E2090.30