

CNC storage and transport systems





CNC modular system

Page 150



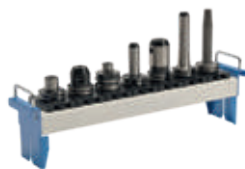
CNC tool inserts

Page 152



CNC table mounted frames

Page 154



CNC tool holder carriers

Page 156



CNC cabinets and workbenches

Page 158



Storage of up to
400 inserts

RotaRex® large cabinet

Page 168



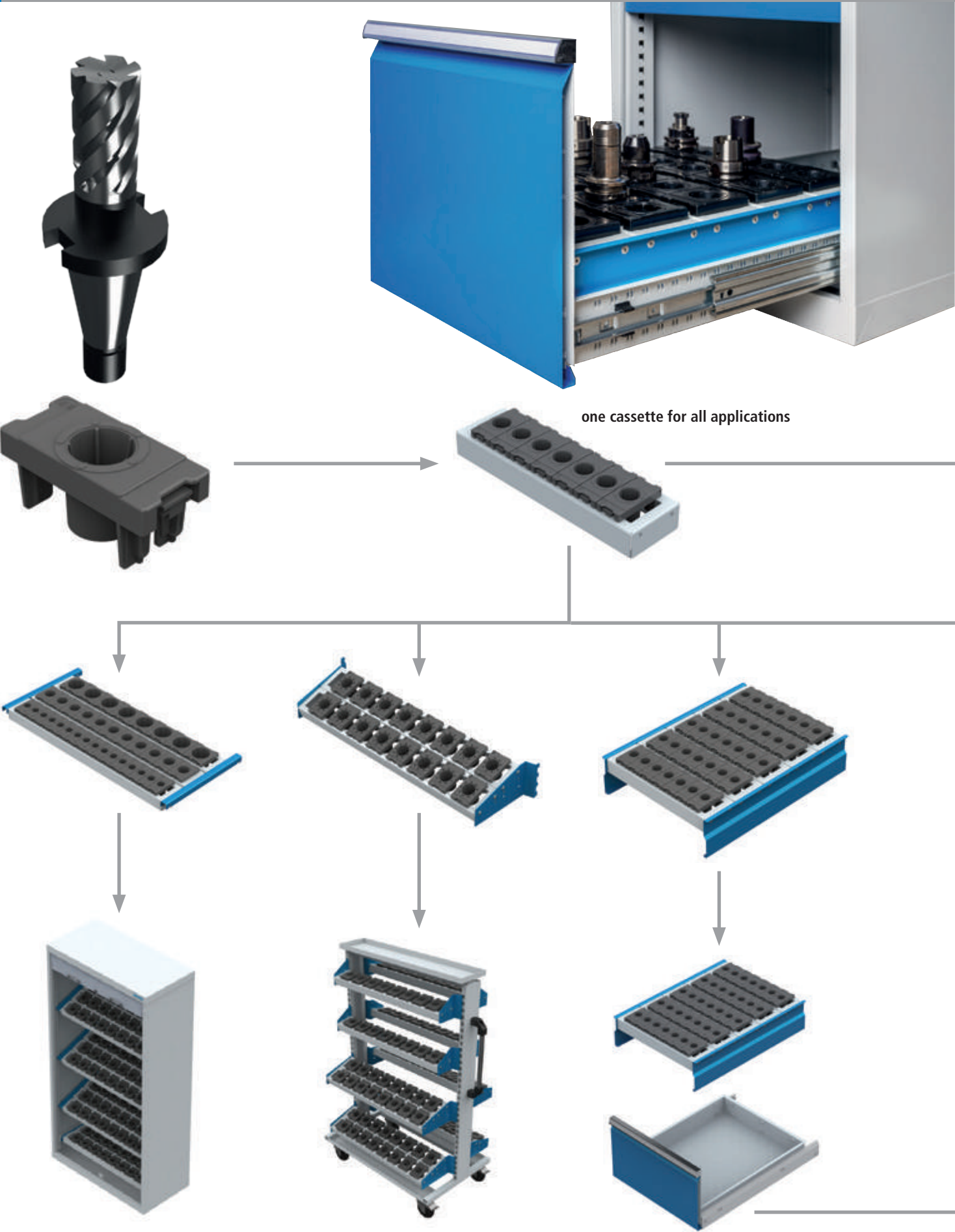
CNC workshop and tool trolley

Page 174



CNC storage and transport systems

The modular system



CNC
E1 **Tool insert size 1**
Tool insert 49 x 103 x 17 mm

Ergonomics
Efficiency through occupational safety during the activity to be carried out

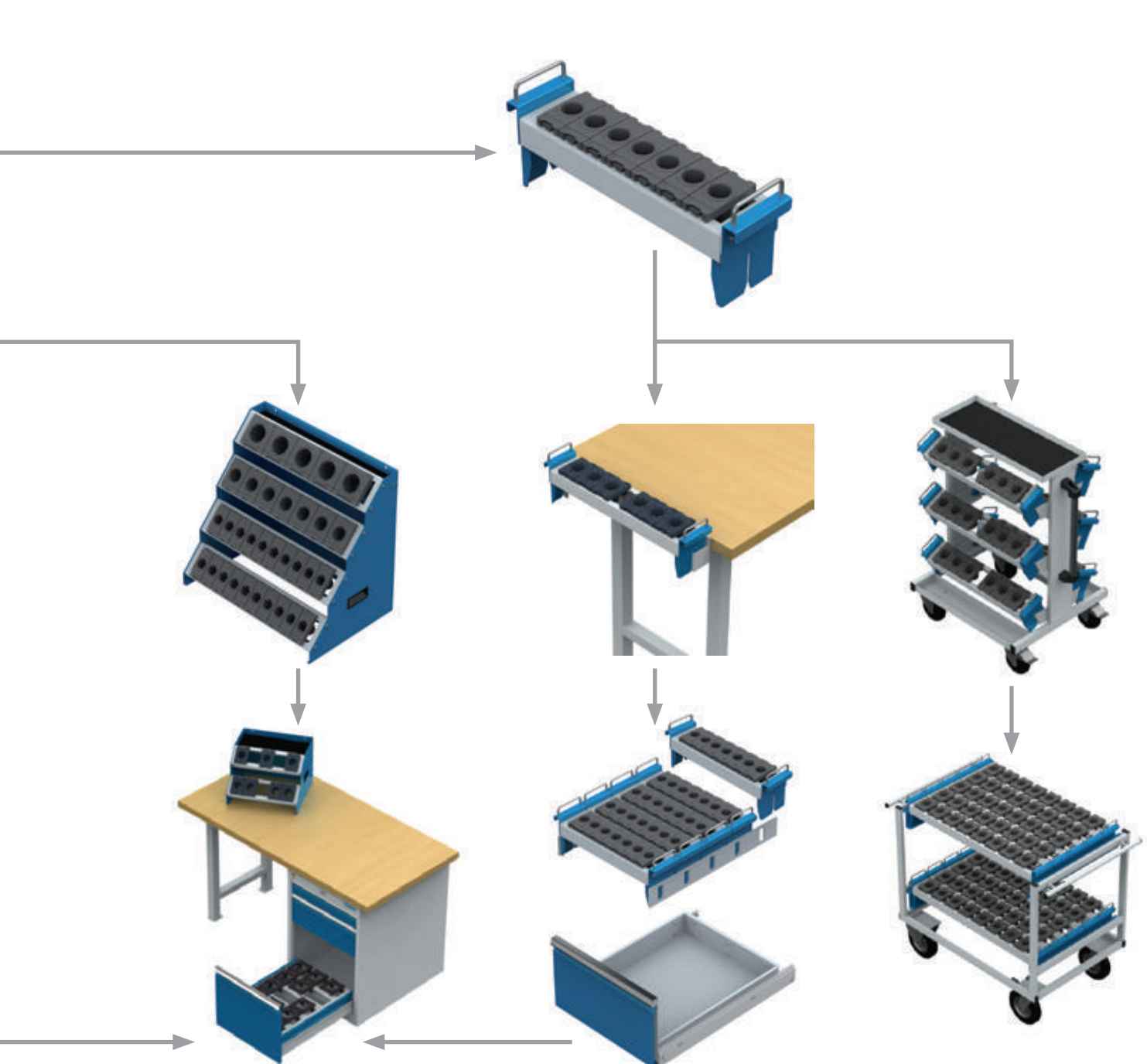
Mobile
Fast, flexible work process thanks to maximum mobility

CNC
E2 **Tool insert size 2**
Tool insert 74 x 103 x 17 mm

Optimisation of the space within reach
Optimal range of movement with short receptacle paths and an unrestricted assembly area

Information
on relevant articles/product groups are shown

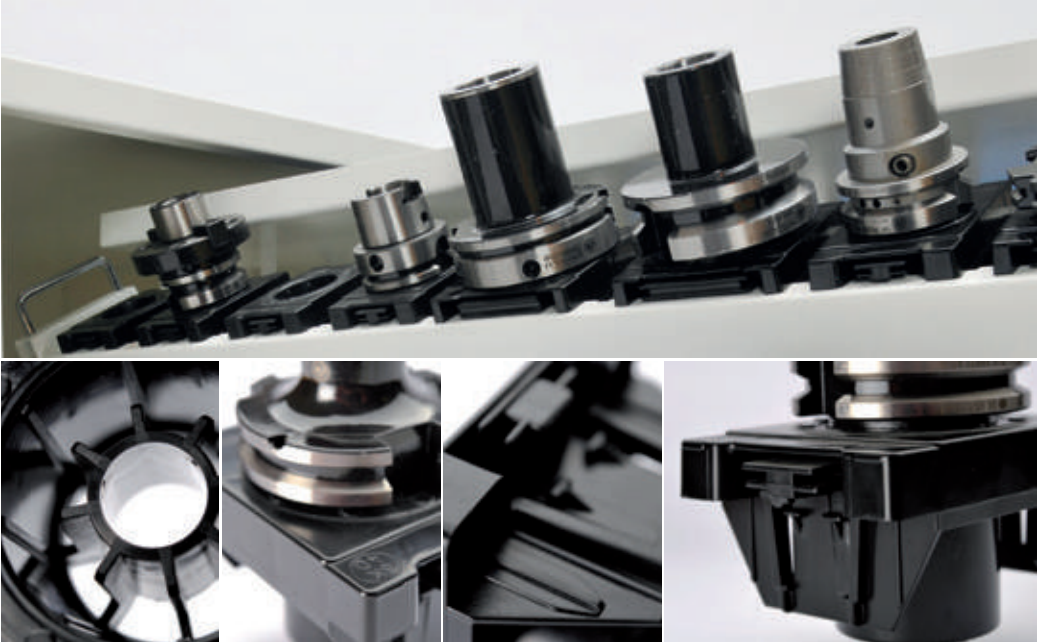
CNC
E3 **Tool insert size 3**
Tool insert 99 x 103 x 17 mm



CNC tool inserts

The tool inserts are made of oil-resistant, break-proof and impact-resistant ABS plastic and are noted for their tailored inner struts. The tapered tool holder is thus optimally centred.

- The insert is clicked into our grid system with a clip and can be moved in steps of 25 mm without a tool.
- Nubs on the top of the inserts. In this way, no adhesion occurs and the tool is prevented from attaching itself by vacuum
- All tool sizes can be combined



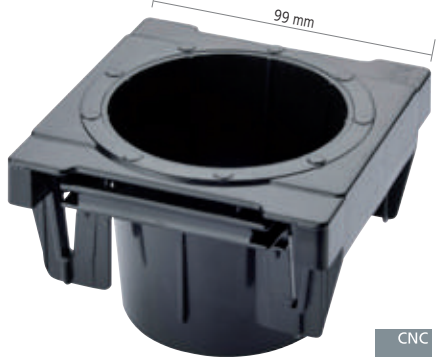
CNC
E1

Item no.	Type
56.01.30	SK 30 / ISO 30
56.02.25	VDI 25
56.02.30	VDI 30
56.03.30	MK 3
56.03.40	MK 4



CNC
E2

Item no.	Type
56.01.40	SK 40 / ISO 40
56.02.40	VDI 40
57.01.50	HSK A 50/B 63
57.01.63	HSK A 63/B 80
56.03.50	MK 5



CNC
E3

Item no.	Type
56.01.50	SK 50 / ISO 50
56.02.50	VDI 50
56.02.60	VDI 60
57.01.80	HSK A 80/B 100
57.01.100	HSK A 100/B 125



CNC
E3

Item no.	Type
57.01.40	HSK A 40/B 50



CNC
E3

Item no.	Type
57.01.32	HSK A 32/B 40

Inner struts protect and centre the holders, attachment by vacuum is not possible

Nubs at the top prevent the tool from attaching itself by vacuum

Clip for easy clicking into place – no screwing down

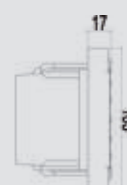
Break-proof, impact-resistant and oil-resistant thanks to ABS material



CNC
E1



CNC
E2



CNC
E3



- With special bore on
On request with surcharge

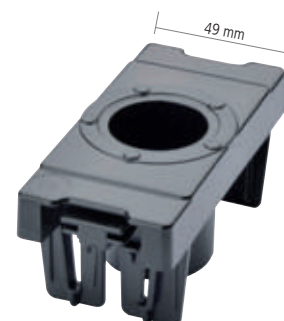
CNC
E3

Item no.	Type
57.01.00	Universal



CNC
E3

Item no.	Type
57.01.03	Capto C 3



CNC
E1

Item no.	Type
57.01.04	Capto C 4



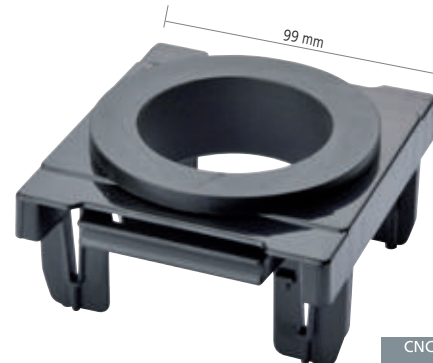
CNC
E2

Item no.	Type
57.01.05	Capto C 5



CNC
E3

Item no.	Type
57.01.06	Capto C 6



CNC
E3

Item no.	Type
57.01.08	Capto C 8

CNC table mounted frames

CNC table mounted frames (TAG)

- Shelf and handles
- CNC table mounted frames are riveted
- **Supplied without tools and inserts**
- *Number of possible inserts for sizes E1, E2, E3



CNC table mounted frame TAG 2-1

■ 2x cassette

Item no.	Dimensions in mm (WxDxH)	CNC E1	CNC E2	CNC E3
02.8705.200	425 x 375 x 300	14*	10*	6*

CNC table mounted frame TAG 2-2

■ 2x cassette

Item no.	Dimensions in mm (WxDxH)	CNC E1	CNC E2	CNC E3
02.8707.200	575 x 375 x 300	20*	14*	10*



CNC table mounted frame TAG 4-1

■ 4x cassette

Item no.	Dimensions in mm (WxDxH)	CNC E1	CNC E2	CNC E3
02.8705.400	425 x 375 x 525	28*	20*	12*



CNC table mounted frame TAG 4-2

■ 4x cassette

Item no.	Dimensions in mm (WxDxH)	CNC E1	CNC E2	CNC E3
02.8707.400	575 x 375 x 525	40*	28*	20*

CNC drawer frame (SR)

CNC storage and transport systems

- Suitable for 450/600/900 x 600 mm drawers
- CNC drawer frames are riveted
- **Supplied without tools and inserts**
- *Number of possible inserts for sizes E1, E2, E3



CNC drawer frame SR 450 for cabinet R 18-24

Item no.	Dimensions in mm (WxDxH)	CNC E1	CNC E2	CNC E3
02.8705.500	450 x 600 x 130	35*	25*	15*



CNC drawer frame SR 600 for cabinet R 24-24

Item no.	Dimensions in mm (WxDxH)	CNC E1	CNC E2	CNC E3
02.8707.500	600 x 600 x 130	50*	35*	25*



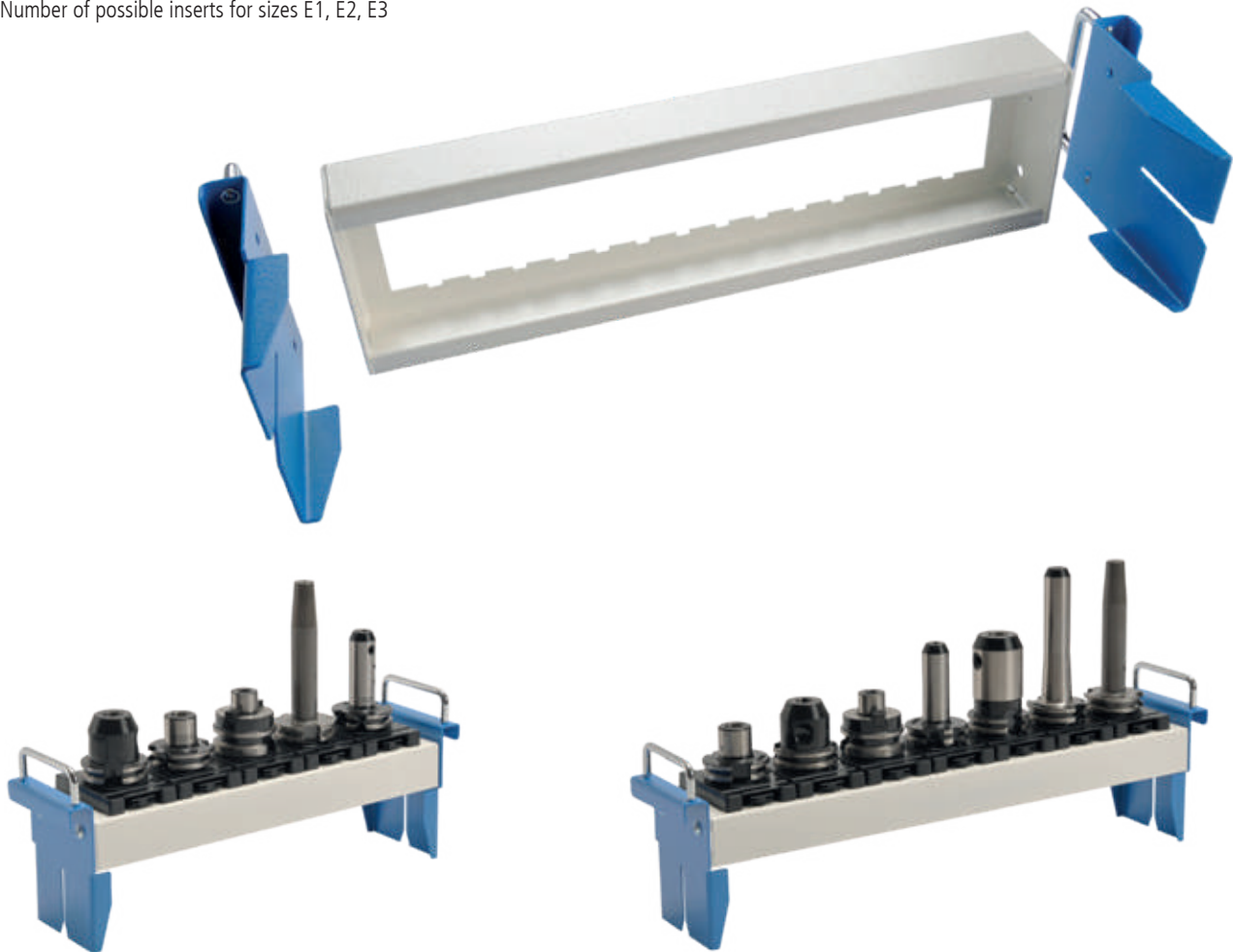
CNC drawer frame SR 900 for cabinet R 36-24

Item no.	Dimensions in mm (WxDxH)	CNC E1	CNC E2	CNC E3
02.8710.500	900 x 600 x 130	80*	55*	40*

CNC tool holder carriers

CNC tool holder carrier (WAT)

- Our modular system offers you a great variety of possibilities
- The cassette is riveted and fitted with grab handles/carry handles
- **Supplied without tools and inserts**
- *Number of possible inserts for sizes E1, E2, E3



CNC tool holder carrier (WAT), 450 for cabinet R 18-24

Item no.	Dimensions in mm (WxDxH)	CNC E1	CNC E2	CNC E3
02.8705.100	470 x 120 x 180	7*	5*	3*

CNC tool holder carrier (WAT), 600 for cabinet R 24-24

Item no.	Dimensions in mm (WxDxH)	CNC E1	CNC E2	CNC E3
02.8707.100	620 x 120 x 180	10*	7*	5*



CNC tool holder carrier (WAT), 800

Item no.	Dimensions in mm (WxDxH)	CNC E1	CNC E2	CNC E3
02.8708.100	820 x 120 x 180	14*	9*	7*



CNC tool holder carrier (WAT), 900 for cabinet R 36-24

Item no.	Dimensions in mm (WxDxH)	CNC E1	CNC E2	CNC E3
02.8710.100	920 x 120 x 180	16*	11*	8*

**Suspension rail**

- For up to 5 CNC tool holder carriers (WAT)
- For all drawers with 600 mm depth
- Supplied in pairs

Item no.	Dimensions in mm (WxDxH)
02.33.87.60	25 x 600 x 75

**Mounting brackets**

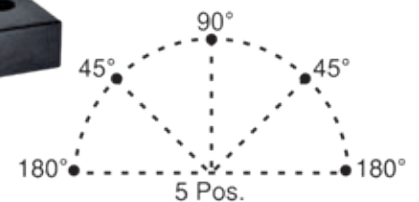
- For 1 CNC tool holder carrier (WAT)
- Supplied in pairs

Item no.	Dimensions in mm (WxDxH)
02.89.WAT.01	70 x 75 x 88

**Aluminium mounting block**

- SK 30, SK 40, SK 50
- Other sizes on request

Item no.	Type
02.560.31	SK 30
02.560.41	SK 40
02.560.51	SK 50

**New****Steel mounting block**

- Swivelling in 5 steps

Item no.	Type	Dimensions in mm (WxDxH)
02.705.30	SK30	125 x 64 x 121
02.705.40	SK40	130 x 64 x 136
02.705.50	SK50	170 x 72 x 170
02.709.25	VDI25	100 x 48 x 97
02.709.30	VDI30	130 x 64 x 121
02.709.40	VDI40	130 x 64 x 136
02.709.50	VDI50	170 x 72 x 170
02.708.32	HSK A 32	100 x 48 x 97
02.708.40	HSK A 40	100 x 48 x 97
02.708.50	HSK A 50	125 x 64 x 121
02.708.63	HSK A 63	130 x 64 x 136
02.708.80	HSK A 80	170 x 72 x 170
02.708.100	HSK A 100	170 x 72 x 170

CNC cabinets and workbenches

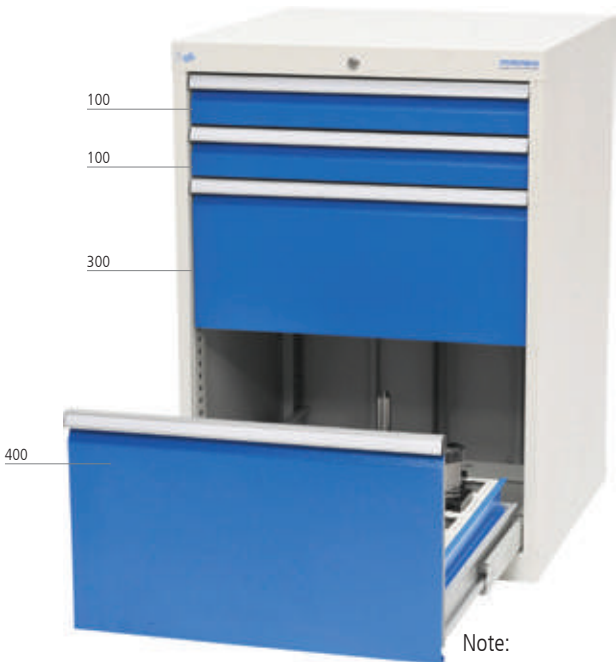
CNC combinations from practice R 18-24 | R 24-24

- The CNC drawers of a front height of more than 300 mm are prepared to hold the tool carriers
- 5 tool carriers or 1 drawer frame can be set per drawer
- Tool holder carriers (WAT), drawer frames (SR) and inserts can be found on page 152/153, 155/156
- Lockable with cylinder lock
- Cabinet can be arranged with other drawer front heights
- **Supplied without tools and tool holder frames**

CNC Drawer cabinet R 24-24

- 4x drawer
- Drawers with full pull-out 100 %
- Drawers with 100 mm front height, load capacity 100 kg
- Drawers with 300 and 400 mm front height, load capacity 180 kg
- Usable drawer dimension, internal: 600 x 600 mm

Item no.	Dimensions in mm (WxDxH)
02.140V	705 x 736 x 1019



Note:
Suspension rails on
page 157



CNC inline workbench

- Beech multiplex top 40 mm (H)
- Drawers with full pull-out (FP) 100%
- Drawers with 50 mm front height, load capacity 70 kg
- Drawers with 100, 150, 200 mm front height, load capacity 100 kg
- Drawers with 400 mm front height, load capacity 180 kg
- **Supplied without tool holder carriers (WAT) and drawer frames (SR)**

Item no.	Dimensions in mm (WxDxH)	Designation
580.0111V86	555 x 736 x 819	Left: CNC drawer cabinet R 18-24, 3x drawer Usable drawer dimension, internal: 450 x 600 mm
780.1111V86	705 x 736 x 819	Right: CNC drawer cabinet R 24-24, 4x drawer Usable drawer dimension, internal: 600 x 600 mm
03.15.40	1500 x 750 x 40	Beech multiplex workbench top
03.20.40	2000 x 750 x 40	Beech multiplex workbench top

CNC inline workbench

- Beech multiplex top 1500 x 750 x 40 mm (WxDxH)
- Workbench stand
- Drawer cabinet R 18-24
- 3x drawer
- Drawers with full pull-out 100 %
- Drawers with 100 and 200 mm front height, load capacity 100 kg
- Drawers with 400 mm front height, load capacity 180 kg
- Usable drawer dimension, internal: 450 x 600 mm
- **Supplied without tools, inserts and table mounted frame**

Item no.	Dimensions in mm (WxDxH)
02.580V86	1500 x 750 x 859



Note:
CNC accessories
from page 152/153



CNC box workbench

- Beech multiplex top, 2000 x 750 x 40 mm (WxDxH)
- Drawer cabinets R 24-24
- 7x drawer
- Drawers with full pull-out (FP) 100%
- Drawers with 50 mm front height, load capacity 70 kg
- Drawers with 100 mm front height, load capacity 100 kg
- Drawers with 400 mm front height, load capacity 180 kg
- Usable drawer dimension, internal: 600 x 600 mm
- 2x shelf 500 x 730 x 300 mm (WxDxH)
- incl. levelling feet
- 1000 kg total load capacity
- **Supplied without tools, inserts, drawer frames and tool holder carriers**

Item no.	Dimensions in mm (WxDxH)	Designation
03.20.34V86	2000 x 750 x 859	Left: 3x drawer, usable drawer dimension, internal: 600 x 600 mm Central: 2x shelf, 500 mm Right: 4x drawer, usable drawer dimension, internal: 600 x 600 mm
03.20.34V96	2000 x 750 x 959	Left: 3x drawer, usable drawer dimension, internal: 600 x 600 mm Central: 2x shelf, 500 mm Right: 4x drawer, usable drawer dimension, internal: 600 x 600 mm

CNC cabinets and workbenches

CNC workstation – We offer you the right solution R 18-24 | R 24-24

- Drawers with full pull-out (FP) 100%
- Drawers with 50 mm front height, load capacity 70 kg
Drawers with 100, 150, 200 mm front height, load capacity 100 kg
Drawers with 400 mm front height, load capacity 180 kg
- Supplied without tools, inserts and decoration



Aluminium mounting block
see page 157

Pos.	Item no.	Dimensions in mm (WxDxH)	Description
1	580.0111V86	555 x 736 x 819	CNC drawer cabinet R 18-24 Usable drawer dimension, internal: 450 x 600 mm
2	780.1111V86	705 x 736 x 819	CNC drawer cabinet R 24-24 Usable drawer dimension, internal: 600 x 600 mm
w/o fig.	02.8707.500	600 x 600 x 130	CNC drawer frame SR 600, 600 x 600 x 130 mm (see page 175)
3	03.20.40	2000 x 750 x 40	Beech multiplex workbench top 40 mm
4.1	03.935.125.240	1250	Support column left
4.2	03.935.125.140	1250	Support column right
5	03.983.102	1000 x 20 x 302	Perforated wall for hanging between the support columns
6	02.910.02	942 x 263 x 134	CNC tool holding shelf with 2 x cassettes for hanging between the support columns
7	02.910.01	942 x 147 x 134	CNC tool holding shelf with 1 x cassettes for hanging between the support columns
8	02.89.WAT.01	70 x 75 x 88	Bracket for attaching the CNC carriers to the workbench top
9	02.8707.100	620 x 120 x 180	CNC tool holder carrier for R 24-24
10	02.8705.400	425 x 375 x 525	CNC table mounted frame TAG 4-1
11	05.96.01	–	Work chair with casters, seat and backrest of black PU, safety gas spring, plastic cruciform base, seat and backrest inclination, height 465 - 655 mm



Mobile CNC workbench R 18-24

- Beech multiplex top, 1250 x 750 x 40 mm (WxDxH)
- 7x drawer
- Drawers with full pull-out (FP) 100 %, load capacity 100 kg per drawer
- Drawer with 400 mm front height, load capacity 180 kg per drawer
- Usable drawer dimension, internal: 450 x 600 mm
- Drawer guides on ball-bearings, individual pull-out lock
- Round tube push handle
- 2x fixed and 2x steering caster Ø 200 mm, of which 2 with locks
- *Number of possible inserts for sizes E1, E2, E3

Item no.	Dimensions in mm (WxDxH)
04.12.26V	1250 x 750 x 995



Mobile CNC workbench R 18-24

- Beech multiplex top, 1250 x 750 x 40 mm (WxDxH)
- 4x drawer, 1x door
- Drawers with full pull-out (FP) 100 %, load capacity 100 kg per drawer
- Drawer with 400 mm front height, load capacity 180 kg per drawer
- Usable drawer dimension, internal: 450 x 600 mm
- Drawer guides on ball-bearings, individual pull-out lock
- Round tube push handle
- 2x fixed and 2x steering caster Ø 200 mm, of which 2 with locks
- Space for 5x CNC tool holder carrier (WAT), 500
- *Number of possible inserts for sizes E1, E2, E3

Item no.	Dimensions in mm (WxDxH)
04.12.27V	1250 x 750 x 995



CNC drawer frame SR 450 for the 400 mm drawer

Item no.	Dimensions in mm (WxDxH)	CNC E1	CNC E2	CNC E3
02.8705.500	450 x 600 x 130	35*	25*	15*

Mounting brackets for 1 CNC tool holder carrier (WAT)

- Supplied in pairs

Item no.	Dimensions in mm (WxDxH)
02.89.WAT.01	70 x 75 x 88

Suspension rail for up to 5 x CNC tool holder carriers (WAT)

- Supplied in pairs

Item no.	Dimensions in mm (WxDxH)
02.33.87.60	25 x 600 x 75



CNC tool holder carrier (WAT), 450

Item no.	Dimensions in mm (WxDxH)	CNC E1	CNC E2	CNC E3
02.8705.100	470 x 120 x 180	7*	5*	3*

CNC cabinets and workbenches

CNC combination system R 36-24

- With CNC tool holder frames (WAR) and tool holder carriers (WAT)
- Drawers with full pull-out 100 %
- Drawers with 50 mm front height, load capacity 70 kg
- Drawers with 100 and 150 mm front height, load capacity 100 kg
- Drawers with 400 mm front height, load capacity 180 kg
- **Supplied without tools and inserts**
- *Number of possible inserts for sizes E1, E2, E3

CNC roller shutter attachment cabinet (empty)

- Cabinet with plastic roller shutters
- With push cylinder lock

Item no.	Dimensions in mm (WxDxH)
02.98.00	1000 x 500 x 1000



Shelf bracket for roller shutter cabinet and CNC-frame

- 1 piece

Art.-Nr.
01-00206

1

CNC tool holder frame (WAR) for roller shutter cabinet

- Can be installed straight or inclined
- Load capacity 120 kg

Item no.	Dimensions in mm (WxDxH)
02.89WARG900	950 x 425 x 85

	CNC E1	CNC E2	CNC E3
Maximum insert capacity per carrier	48*	33*	24*

2

CNC tool holder frame (WAR) for roller shutter cabinet, pull-out

- For roller shutter cabinet
- Full pull-out 100 %
- Load capacity 50 kg

Item no.	Dimensions in mm (WxDxH)
02.095.03 VA	950 x 420 x 68

	CNC E1	CNC E2	CNC E3
Maximum insert capacity per carrier	48*	33*	24*

3

CNC drawer cabinet R 36-24

- With cylinder lock
- Usable drawer area, internal: 900 x 600 mm
- 4x drawer
- Drawer with 400 mm BLH without slotted side panels, therefore the use of metal dividers is not possible

Item no.	Dimensions in mm (WxDxH)
02.1080.4V	1005 x 736 x 819



CNC drawer frames or single carriers see page 175/176
CNC inserts see page 153/154

CNC tall magazine cabinet

CNC storage and transport systems

- Housing made of sturdy, welded sheet steel
- The possible number of tool frames is based on the tool height and mounting (straight or inclined)
 - Maximum capacity of the **straight** frame: 5
 - Maximum capacity of the **inclined** frame: 4
- *Number of possible inserts for sizes E1, E2, E3

CNC roller shutter cabinet with plastic roller shutters (empty)

- Plastic roller shutters with push cylinder lock

Item no.	Dimensions in mm (WxDxH)
02.95.01	1000 x 500 x 1950

CNC roller shutter cabinet with aluminium roller shutters (empty)

- High-quality aluminium roller shutters with push cylinder lock

Item no.	Dimensions in mm (WxDxH)
02.89.01	1000 x 500 x 1950

1**CNC tool holder frame (WAR)**

- Can be installed straight or inclined
- Load capacity 120 kg

Item no.	Dimensions in mm (WxDxH)
02.89WARG900	950 x 425 x 85

	CNC E1	CNC E2	CNC E3
Maximum insert capacity per carrier	48*	33*	24*

2**CNC tool holder frame (WAR) for roller shutter cabinet, pull-out**

- For roller shutter cabinet
- Full pull-out 100 %
- Load capacity 50 kg

Item no.	Dimensions in mm (WxDxH)
02.095.03 VA	950 x 420 x 68

	CNC E1	CNC E2	CNC E3
Maximum insert capacity per carrier	48*	33*	24*

3**Shelf for CNC roller shutter cabinet**

- Load capacity 100 kg

Item no.	Dimensions in mm (WxDxH)
04.122	950 x 420 x 28

4**Drawer for CNC roller shutter cabinet**

- 100 mm front height, full pull-out 100 %
- Load capacity 50 kg
- Usable drawer dimension, internal: 899 x 375 (W x D)

Item no.	Dimensions in mm (WxD)
60.095.100VA	950 x 430

**CNC roller shutter cabinet with plastic roller shutters (as shown)**

- 2x CNC tool holder frame (WAR), straight/inclined
- 1x CNC tool holder frame (WAR), pull-out
- 1x shelf
- 1x drawer
- **Supplied without tools and inserts**

Item no.	Dimensions in mm (WxDxH)
02.95.01.01	1000 x 500 x 1950



CNC cabinets and workbenches

CNC hinged door cabinet with solid sheet doors R 36-16

- Robust, welded sheet steel construction
- Resistant powder coating
- Drawers with full pull-out 100 %
- Solid sheet doors with moulded recess cylinder lock
- When using drawers and pull-outs, the opening angle must be 130°, therefore these hinged-door wardrobes not be placed directly next to each other.



CNC hinged door cabinet R 36-16

- 1x fixed, inclined tool holder frame (WAR)
- 1x pull-out tool holder frame (WAR)
- 1x shelf
- 3x drawer
- **Supplied without tools and inserts**

Item no.	Dimensions in mm (WxDxH)	Product name	Description
02.118.05.01	980 x 500 x 1838	Hinged door cabinet R 36-16	1x fixed and 1x pull-out tool holder frame (WAR), 1x shelf, without tools and inserts, 3x drawer (100, 150, 200 mm)
02.89WAR900	924 x 425 x 87	CNC tool holder frame (WAR), straight/ inclined	Suitable for all hinged door cabinets, can be used straight/inclined, load capacity 80 kg
02.89WARA900	926 x 450 x 60	CNC tool holder frame (WAR), pull-out, for hinged door cabinet	Pull-out 100 %, load capacity 50 kg
04.090.013	925 x 443 x 22	Shelf for hinged door cabinet	Fixed shelf, height-adjustable, load capacity 80 kg
60.098.100VA	900 x 400 x 90	Drawer for hinged door cabinet Front height 100 mm, load capacity 50 kg	Drawer suitable for all hinged door cabinets, pull-out 100 %, internal usable dimension: 900 x 400 mm
60.098.150VA	900 x 400 x 140	Drawer for hinged door cabinet Front height 150 mm, load capacity 50 kg	Drawer suitable for all hinged door cabinets, pull-out 100 %, internal usable dimension: 900 x 400 mm
60.098.200VA	900 x 400 x 190	Drawer for hinged door cabinet Front height 200 mm, load capacity 50 kg	Drawer suitable for all hinged door cabinets, pull-out 100 %, internal usable dimension: 900 x 400 mm

CNC hinged door cabinet with glazed doors R 36-16

CNC storage and transport systems

- Robust, welded sheet steel construction
- Resistant powder coating
- Glazed doors with moulded recess cylinder lock
- When using drawers and pull-outs, the opening angle must be 130°, therefore these hinged-door wardrobes not be placed directly next to each other.



CNC hinged door cabinet with glazed doors R 36-16

- 2x fixed, inclined tool holder frame (WAR)
- 2x pull-out tool holder frame (WAR)
- **Supplied without tools and inserts**

Item no.	Dimensions in mm (WxDxH)	Product name	Description
02.117.04.01	980 x 500 x 1838	CNC hinged door cabinet with glazed doors R 36-16	2x fixed and 2x pull-out CNC tool holder frame (WAR), without tools and inserts
04.090.013	925 x 443 x 22	Shelf	Fixed shelf, height-adjustable, load capacity 80 kg
02.89WAR900	924 x 425 x 87	CNC tool holder frame (WAR), straight/inclined	Suitable for all hinged door cabinets, can be used straight/inclined, load capacity 80 kg
02.89WARA900	926 x 450 x 60	CNC tool holder frame (WAR), pull-out	Suitable for all hinged door cabinets, Pull-out 100 %, load capacity 50 kg

CNC inserts see page 153/154

CNC cabinets and workbenches

CNC hinged door cabinet R 36-16

- When using drawers and pull-outs, the opening angle must be 130°, therefore these hinge-door wardrobes cannot be placed directly next to each other.



CNC hinged door cabinet (empty) R 36-16

- Hinged door cabinet with solid sheet doors
- With moulded recess cylinder lock

Item no.	Dimensions in mm (WxDxH)	Usable height in mm
04.109	980 x 500 x 1019	900
04.118	980 x 500 x 1838	1719



CNC hinged door cabinet with glazed doors (empty) R 36-16

- Hinged door cabinet with glazed doors (acrylic glass)
- With moulded recess cylinder lock

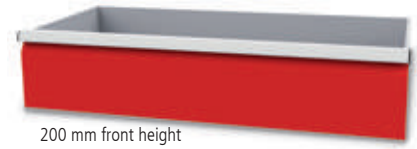
Item no.	Dimensions in mm (WxDxH)	Usable height in mm
04.117	980 x 500 x 1838	1719



100 mm front height



150 mm front height



200 mm front height

Drawers for hinged door cabinet R 36-16

- Full pull-out 100 %
- Includes rails and fastening material
- Usable drawer dimension, internal: 900 x 400 mm
- Max. load capacity 50 kg

Item no.	Front height in mm	Shell height in mm	Usable height in mm
60.098.100VA	100	85	90
60.098.150VA	150	135	140
60.098.200VA	200	185	190

New**Pull-out shelf for hinged door cabinet**

- Shelf with upstand, pull-out 100 %
- Includes rails and fastening material

Item no.	Dimensions in mm (WxDxH)	Load capacity
04.090.014	926 x 442 x 70	max. 50 kg
04.090.14-75		max. 75 kg

**Shelf for hinged door cabinet**

- Max. load capacity 80 kg
- Includes fastening material

Item no.	Dimensions in mm (WxDxH)	Designation
04.090.013	925 x 443 x 22	Fixed shelf, height-adjustable, bolted

**CNC tool holder frame (WAR) for hinged door cabinet**

- Can be used straight/inclined
- Includes fastening material

Item no.	Dimensions in mm (WxDxH)	Load capacity (kg)
02.89WAR900	924 x 425 x 87	80
02.89WAR9005	924 x 425 x 87	140

	CNC E1	CNC E2	CNC E3
Maximum insert capacity per carrier for 02.89WAR900 and 02.89WAR9005	48*	33*	24*

**CNC tool holder frame (WAR) for hinged door cabinet**

- Pull-out 100 %
- Includes rails and fastening material

Item no.	Dimensions in mm (WxDxH)	Load capacity (kg)
02.89WARA900	926 x 450 x 60	50

	CNC E1	CNC E2	CNC E3
Maximum insert capacity per carrier for 02.89WARA900	48*	33*	24*

Bracket retrofit kit for CNC tool holder frame

- Load capacity 140 kg
- 4-part set



Item no.	Dimensions in mm (WxDxH)
02.89W140	76 x 29 x 12

CNC RotaRex® large cabinet



Your advantages

- Barrier-free access to the cabinet - no impairment by pull-outs
- Space-saving - high quantity of inserts with minimal storage area, up to 400x SK30 or up to 300x SK40 tools fit in 1m²
- Optimised work process as all tools are quickly within reach
- Opening/usable height: 1790 mm
- Forklift base for transport. **Warning!** RotaRex® must not be transported when loaded!



Roller shutters

- The electrically driven roller shutter is operated by remote control
- Alternatively possible with spring-loaded shaft or hinged doors
- Multiple cabinets can be opened simultaneously with one remote control (on request)
- Aluminium-coloured plastic slats
- In case of a power failure or technical defect, emergency unlocking is provided on the rear of the cabinet

Column

- Precision steel tube, Ø 60 mm
- Galvanized
- Total load 1.5 t
- For holding up to 5 CNC rotating frames Individually adjustable on a grid of 25 mm
- Individual readjustment of the column position thanks to a tongue on the bottom

Equipped CNC lathe frames
see page 171



CNC rotating frame

- With handles and locking mechanism
- 16 lines for Tool inserts
- Supplied without inserts

Item no.	Dimensions in mm (Ø)
02.R01	915



CNC-RotaRex® with electric roller shutters

- With remote control
- Without CNC rotating frame

Item no.	Dimensions in mm (WxDxH)
02.1000.1	1055 x 1035 x 2130



CNC-RotaRex® with manual roller shutters

- Without CNC rotating frame

Item no.	Dimensions in mm (WxDxH)
02.1000.2	1055 x 1035 x 2130



CNC-RotaRex® with hinged doors

- Glazed doors with acrylic glass
- Without CNC rotating frame

Item no.	Dimensions in mm (WxDxH)
02.1000.3	1055 x 1035 x 1955

CNC RotaRex® large cabinet

CNC-RotaRex®

Lighting RotaRex®

New

Bring even more clarity to your RotaRex® cabinet.

The self-adhesive lighting set is attached to the inside of the RotaRex® housing and is circumferential. Each storage space is thus optimally illuminated.

The lighting time can be set manually between 30 seconds and 10 minutes. As soon as you open, approach or reach into your storage system, the lighting is activated by the sensor. the lighting is activated by the sensor and gives you a better overview of your tools. Retrofitting is possible.



Lighting set can be flexibly attached



Optimally illuminated tool



Lighting set

- Motion sensor
- LED Stribe warm white, clear coated
- X-adapter for connecting LED Stribes
- Self-adhesive on the back for easy mounting
- Simple plug-in system for easy installation
- Pleasant warm white LED light
- Transparent coating to protect the LED against contact or moisture
- Electrical connection with 230/12V required
- Energy-saving LED technology (saves up to 80 % compared to conventional incandescent lamps)

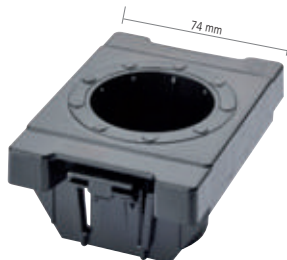
Item no.	Dimensions in mm (W x D)
02.BELROT	6000 x 10,5

CNC rotating frame only for CNC-RotaRex®

- Dimensions (Ø): 915 mm
- Customer-specific height adjustment thanks to a grid of 25 mm in the column
- Up to 5 x CNC rotating frame fit in the RotaRex®, depending on the tool height
- All frames can be individually rotated 360°
- Maximum load of up to 300 kg per frame
- With handles for optimum access to each tool
- Locking at 90°, 180°, 270°, and 360°
- Smooth rolling with steel ball bearing guides
- **CNC lathe frame only available in combination with a CNC-RotaRex® cabinet available.**



Example: equipped with tool inserts size E2



Tool insert size 2

- Tool insert 74 x 103 x 17 mm
- CNC rotating frame completely equipped with the inserts listed below
- Only suitable for CNC-RotaRex® cabinet

CNC
E2

Item no.	Type	Number of inserts	Number of tools
02.R570150	HSK A 50/B 63	60	60
02.R570163	HSK A 63/B 80	60	60
02.R560140	SK 40	60	60
02.R570405	Capto C5	60	60
02.R560240	VDI 40	60	60
02.R560350	MK5	60	60



Tool insert size 1

- Tool insert 49 x 103 x 17 mm
- CNC rotating frame completely equipped with the inserts listed below
- Only suitable for CNC-RotaRex® cabinet

CNC
E1

Item no.	Type	Number of inserts	Number of tools
02.R560130	SK 30	80	80
02.R570104	Capto C4	80	80
02.R560330	MK 3	80	80
02.R560340	MK 4	80	80
02.R560225	VDI 25	80	80
02.R560230	VDI 30	80	80



Tool insert size 3

- Tool insert 99 x 103 x 17 mm
- CNC rotating frame completely equipped with the inserts listed below
- Only suitable for CNC-RotaRex® cabinet

CNC
E3

Item no.	Type	Number of inserts	Number of tools
02.R570132	HSK A 32/B 40	32	96
02.R570140	HSK A 40/B 50	32	64
02.R570180	HSK A 80/B 100	32	32
02.R5701100	HSK A 100/B 125	32	32
02.R560150	SK 50	32	32
02.R570103	Capto C3	32	96
02.R570106	Capto C6	32	32
02.R570108	Capto C8	32	32
02.R560250	VDI 50	32	32
02.R570100	Universal	32	32

CNC workshop and transport trolleys

CNC workshop trolley R 18-24 | R 24-24

The optimum storage and safe transport of CNC tools significantly influence economic efficiency.

- Inserts see page 152/153
- **Suspension rails 02.33.87.60 are required when using the single carrier (WAT).**
- **Supplied without tools and inserts**

CNC workshop trolley R18-24

- Raised edges and ribbed rubber mat
- 5x drawer
- Usable drawer dimension, internal: 450 x 600 mm
- Drawers with full pull-out 100 %
- Drawers with 50 mm front height, load capacity 70 kg
- Drawers with 100 mm front height, load capacity 100 kg
- Drawers with 400 mm front height, load capacity 180 kg
- With individual interlocking
- 2 fixed and 2 steering casters, Ø 125 mm with locks
- Max. load capacity 500 kg



Item no.	Dimensions in mm (WxDxH)	Designation
02.580.05V	555 x 736 x 991	CNC workshop trolley with 5x drawer and raised edges
02.8705.100	470 x 120 x 180	CNC tool holder carrier (WAT), 5x single carrier per drawer possible
02.33.87.60	600 x 25 x 75	Suspension rail for CNC for tool holder carrier (WAT)
02.8705.500	450 x 600 x 130	CNC drawer frame SR 450, without tool inserts

CNC workshop trolley R24-24

- Raised edges and ribbed rubber mat
- 4x drawer
- Usable drawer dimension, internal: 600 x 600 mm
- Drawers with full pull-out 100 %
- Drawers with 50 mm front height, load capacity 70 kg
- Drawers with 100 mm front height, load capacity 100 kg
- Drawers with 400 mm front height, load capacity 180 kg
- With individual interlocking
- 2 fixed and 2 steering casters, Ø 125 mm with locks
- Max. load capacity 500 kg



Item no.	Dimensions in mm (WxDxH)	Designation
02.780.04V	705 x 736 x 991	CNC workshop trolley with 4 drawer and raised edges
02.8707.100	620 x 120 x 180	CNC tool holder carrier (WAT), 5x single carrier per drawer possible
02.33.87.60	600 x 25 x 75	Suspension rail for CNC for tool holder carrier (WAT)
02.8707.500	600 x 600 x 130	CNC drawer frame SR 600, without tool inserts

- Optimum storage and safe transport
- *Number of possible inserts for sizes E1, E2, E3
see page 152/153



Housing for CNC trolley 02.85.07, R24-24

Item no.	Dimensions in mm (WxDxH)	Description	CNC E1	CNC E2	CNC E3
02.86.07	705 x 736 x 1019	Garage, lockable with cylinder lock			
02.85.07	560 x 630 x 950	CNC trolley with handle, 2x fixed and 2x steering caster, Ø 125 mm with locks, without tool inserts and tool carrier	60*	42*	30*
02.8707.100	620 x 120 x 180	*CNC tool holder carrier (WAT) 600 for R 24-24, 6x single carrier per trolley possible. Capacity see table below.	10*	7*	5*
02.85.08	535 x 336 x 36	Bottom tray for CNC trolley			



Housing for CNC trolley 02.85.01, R36-24

Item no.	Dimensions in mm (WxDxH)	Description	CNC E1	CNC E2	CNC E3
02.86.01	705 x 1003 x 1019	Garage, lockable with cylinder lock			
02.85.01	560 x 930 x 950	CNC trolley with handle, 2x fixed and 2x steering caster, Ø 125 mm with locks, without tool inserts and tool carrier	96*	66*	48*
02.8710.100	920 x 120 x 180	*CNC tool holder carrier (WAT) 900 for R36-24, 6x single carrier per trolley possible. Capacity see table below.	16*	11*	8*
02.85.06	835 x 330 x 36	Bottom tray for CNC trolley			

CNC workshop and transport trolleys

CNC transport trolley

- Optimum storage and safe transport
- **Supplied without tools and inserts**
- *Number of possible inserts for sizes E1, E2, E3 see page 152/153



New



CNC trolley (empty) for max. 8 CNC carriers 02.8707.100

- 2x fixed and 2x steering caster, Ø 125 mm with locks
- Max. capacity of CNC inserts with 8x carrier (see table)
- Max. load capacity 400 kg

Item no.	CNC E1	CNC E2	CNC E3
02.8707.100	10*	7*	5*

Item no.	Dimensions in mm (WxDxH)	CNC E1	CNC E2	CNC E3
02.88.01	480 x 900 x 860	56*	40*	24*
02.88.00	630 x 900 x 860	80*	56*	40*



CNC trolley with 1 level (empty) for CNC tools

- 2x fixed and 2x steering caster, Ø 200 mm with locks
- 1x tool frame, top
- 1x shelf, bottom
- Max. capacity of CNC inserts see table
- Max. load capacity 400 kg

Item no.	Dimensions in mm (WxDxH)	CNC E1	CNC E2	CNC E3
02.092.02	950 x 665 x 950	80*	55*	40*



CNC trolley with 2 levels (empty) for CNC tools

- 2x fixed and 2x steering caster, Ø 200 mm with locks
- 2x tool frame
- Max. capacity of CNC inserts see table
- Max. load capacity 400 kg

Item no.	Dimensions in mm (WxDxH)	CNC E1	CNC E2	CNC E3
02.092.01	950 x 665 x 950	160*	110*	80*

CNC transport trolley

CNC storage and transport systems

- 2x fixed and 2x steering caster, Ø 125 mm with locks
- Ergonomic handle, enabling the multi-trolleys to move extremely smoothly and be used anywhere
- Individual arrangements possible
- Max. load capacity 500 kg
- *Number of possible inserts for sizes E1, E2, E3 see page 152/153



Pos.	Item no.	Dimensions in mm (WxDxH)	Description
1	07.58.10-1	990 x 610 x 1450	CNC trolley (empty) with bottom shelf
2	07.58.22	980 x 200 x 30	Top shelf for CNC trolley
3	02.910.02	942 x 263 x 134	Tool holding shelf, wide, WABg 900 2x cassette with bolted mounting brackets, 0°, 10° & 20° inclinable
4	02.910.01	942 x 147 x 134	Tool holding shelf, narrow, WABk 900 1x cassette with bolted mounting brackets, 0°, 10° & 20° inclinable



Tool holding shelf, single-row

- WABk 900

Item no.	Dimensions in mm (WxDxH)	CNC E1	CNC E2	CNC E3
02.910.01	942 x 147 x 134	16*	11*	8*



Tool holding shelf, double-row

- WABg 900

Item no.	Dimensions in mm (WxDxH)	CNC E1	CNC E2	CNC E3
02.910.02	942 x 263 x 134	32*	22*	16*